

# HALLIBURTON

Plug #2 - Squeeze Leak  
Interval

Customer: CHEVRON - MID-CONTINENT EBIZ

Job: 904336742

Case: Case 2

## 1.0 Real-Time Job Summary

### 1.1 Job Eventlog

| Type  | Seq. No. | Activity                 | Graph Label              | Date      | Time     | Source | Pass-Side Pump Pressure (psi) | Downhole Density (ppg) | Combined Pump Rate (bbl/min) | Pump Stage Total (bbl) | Comments  |
|-------|----------|--------------------------|--------------------------|-----------|----------|--------|-------------------------------|------------------------|------------------------------|------------------------|---|
| Event | 1        | Call Out                 | Call Out                 | 9/30/2017 | 09:00:00 | USER   |                               |                        |                              |                        |   |
| Event | 2        | Safety Meeting           | Travel to Location       | 9/30/2017 | 09:30:00 | USER   |                               |                        |                              |                        | Discuss travel related safety issues with crew.   |
| Event | 3        | Depart Home for Location | Depart Home for Location | 9/30/2017 | 09:45:00 | USER   |                               |                        |                              |                        | Convoy for safety.  |
| Event | 4        | Arrive At Loc            | Arrive At Location       | 9/30/2017 | 10:45:00 | USER   |                               |                        |                              |                        | Sign in with safety man.  |
| Event | 5        | Safety Meeting           | Jobsite Assessment       | 9/30/2017 | 10:50:00 | USER   |                               |                        |                              |                        | Identify and discuss all location related safety issues with crew. Check in with customer. Review JSA.  |
| Event | 6        | Other                    | Spot Equipment           | 9/30/2017 | 10:55:00 | USER   | 158.00                        | 0.02                   | 0.00                         | 0.0                    | Use spotters.   |
| Event | 7        | Other                    | Well Information         | 9/30/2017 | 11:00:00 | USER   |                               |                        |                              |                        | Customer: Terri Moore, Plug #2 - Retainer: 4600', Tubing: 2.875" 6.5 lb Casing: 7" 23 lb, Perfs: 4653' - 4683', Tagged Cement: 5296, Brine in Hole: 10.0 ppg. Leave 4 bbls cement on top of the retainer. |
| Event | 8        | Safety Meeting           | Pre Rig Up               | 9/30/2017 | 11:15:00 | USER   |                               |                        |                              |                        | Discuss all rig up related safety issues with crew.   |
| Event | 9        | Rig-Up Equipment         | Rig-Up Equipment         | 9/30/2017 | 11:30:00 | USER   |                               |                        |                              |                        | Waiting for rig. They are still running tubing.   |
| Event | 10       | Wait On Order            | Wait On Order            | 9/30/2017 | 11:31:00 | USER   | 159.00                        | 0.02                   | 0.00                         | 0.0                    |   |
| Event | 11       | Safety Meeting           | Pre Job                  | 9/30/2017 | 12:15:00 | USER   | -2.00                         | 8.73                   | 0.00                         | 19.9                   | Discuss all job related safety issues and pump schedule with crew and all involved  |

iCem Service

(v. 4.2.393)

parties on location.

|       |    |                          |                          |           |          |      |         |       |      |      |   |
|-------|----|--------------------------|--------------------------|-----------|----------|------|---------|-------|------|------|---|
| Event | 12 | Start Job                | Start Job                | 9/30/2017 | 12:36:00 | USER | -2.00   | 8.69  | 0.00 | 19.9 |   |
| Event | 13 | Pump Spacer              | Fill Lines               | 9/30/2017 | 12:40:23 | USER | 2.00    | 7.62  | 1.60 | 0.1  | 3 bbls water  |
| Event | 14 | Test Lines               | Pressure Test            | 9/30/2017 | 12:45:03 | USER | 3507.00 | 8.34  | 0.00 | 3.1  | 500 psi Kickout test, 3000 psi high psi test                      |
| Event | 15 | Pump Spacer              | Injection Test           | 9/30/2017 | 12:49:17 | USER | 1.00    | 8.21  | 1.00 | 3.1  | 5 bbls water 3.0 bbl/min @ 570 psi                                |
| Event | 16 | Pump Cement              | Pump Cement              | 9/30/2017 | 13:01:35 | USER | 285.00  | 15.39 | 2.00 | 1.8  | 15 bbls 15.8 ppg, 1.15 cufy/sk, 5.01 gal/sk, 75 sks               |
| Event | 17 | Pump Spacer              | Pump Water Spacer        | 9/30/2017 | 13:09:15 | USER | 9.00    | 9.41  | 2.00 | 0.8  | 2 bbls water  |
| Event | 18 | Pump Displacement        | Pump Brine Displacement  | 9/30/2017 | 13:10:31 | USER | 24.00   | 9.71  | 2.00 | 1.4  | 21 bbls brine 10 ppg  |
| Event | 19 | String out               | String Out               | 9/30/2017 | 13:18:25 | USER | 45.00   | 9.61  | 0.00 | 16.5 |   |
| Event | 20 | Pump Displacement        | Pump Brine Displacement  | 9/30/2017 | 13:19:00 | USER | 17.00   | 9.63  | 1.50 | 16.8 | 2 bbls brine 10 ppg   |
| Event | 21 | Pulling Out Of Hole      | Pulling Out Of Hole      | 9/30/2017 | 13:21:00 | USER | -3.00   | 9.67  | 1.30 | 17.6 | 180' above plug   |
| Event | 22 | Clean Lines              | Clean lines              | 9/30/2017 | 13:22:00 | USER | 17.00   | 9.63  | 2.10 | 19.6 | Wash up to the pit.   |
| Event | 23 | Reverse Circ Well        | Reverse Out              | 9/30/2017 | 13:36:00 | USER | -3.00   | 8.06  | 0.00 | 34.5 | 32 bbls brine 10 ppg, to clear tubing. Saw traces of cement back. |
| Event | 24 | End Job                  | End Job                  | 9/30/2017 | 14:00:00 | USER | -2.00   | 8.04  | 0.00 | 34.5 |   |
| Event | 25 | Safety Meeting           | Pre Rig Down             | 9/30/2017 | 14:10:00 | USER | 284.00  | 8.07  | 9.60 | 57.5 | Discuss all rig down related safety issues with crew.             |
| Event | 26 | End Job                  | End Job                  | 9/30/2017 | 14:15:01 | COMS |         |       |      |      |   |
| Event | 27 | Rig-Down Equipment       | Blow Down Equipment      | 9/30/2017 | 14:20:00 | USER |         |       |      |      |   |
| Event | 28 | Safety Meeting           | Travel to Home           | 9/30/2017 | 15:20:00 | USER |         |       |      |      | Discuss all travel related safety issues with crew.               |
| Event | 29 | Depart Location for Home | Depart Location for Home | 9/30/2017 | 15:30:00 | USER |         |       |      |      | Thank you for your business! Benjamin Fuchs and crew.             |

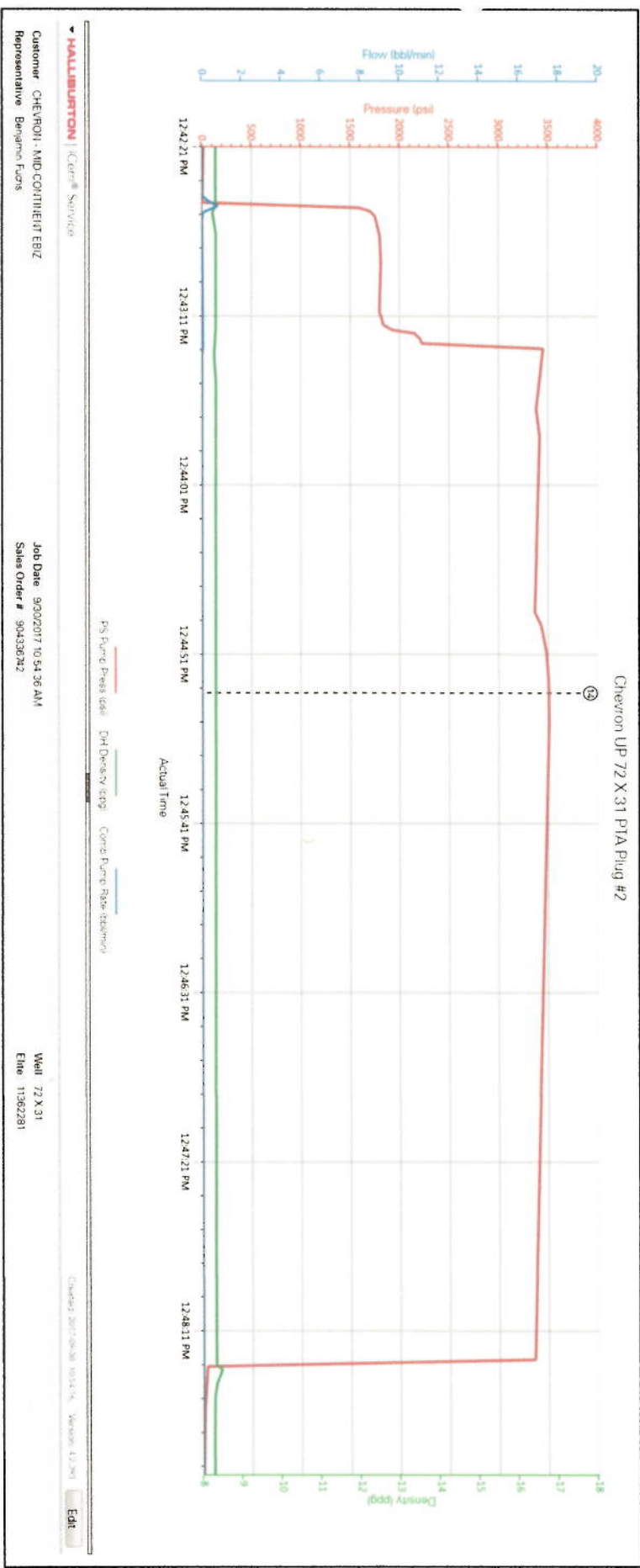
iCem Service

(v. 4.2.393)

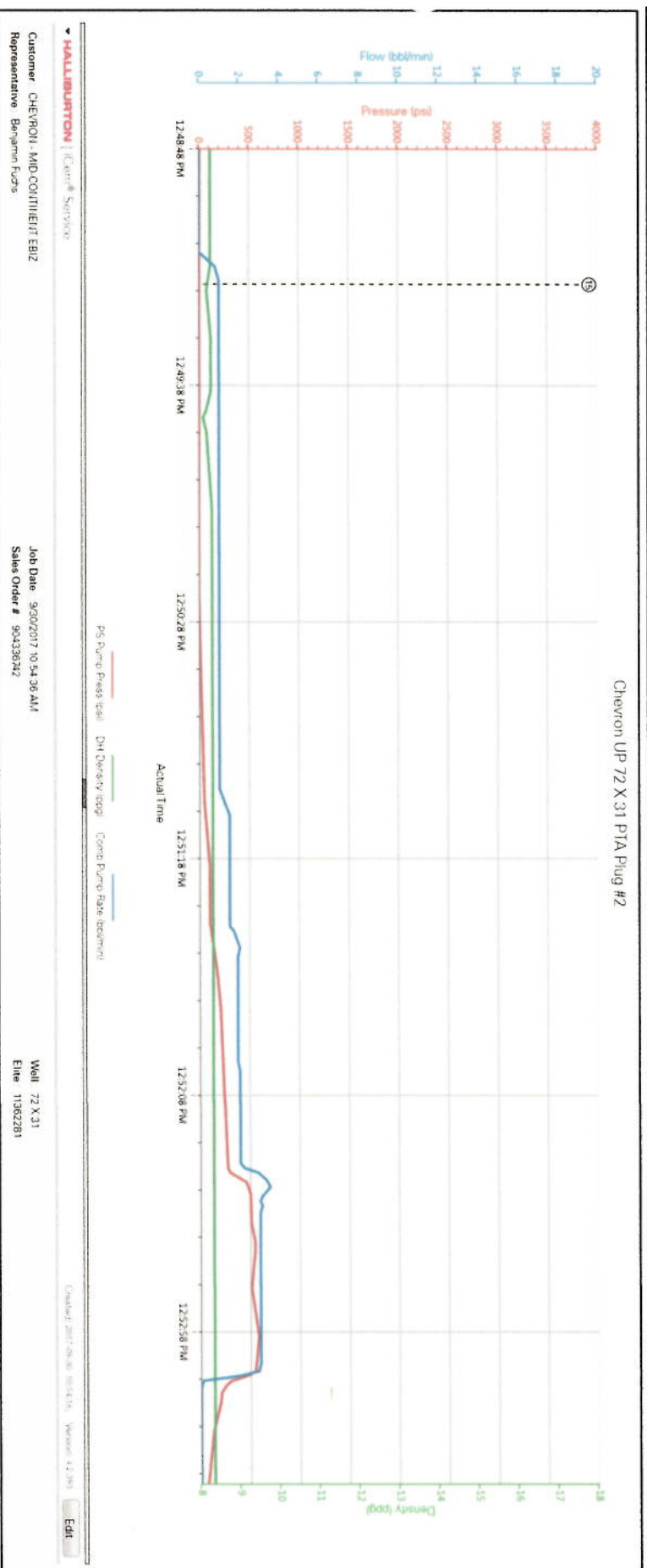
Created: Saturday, September 30, 2017

## 2.0 Attachments

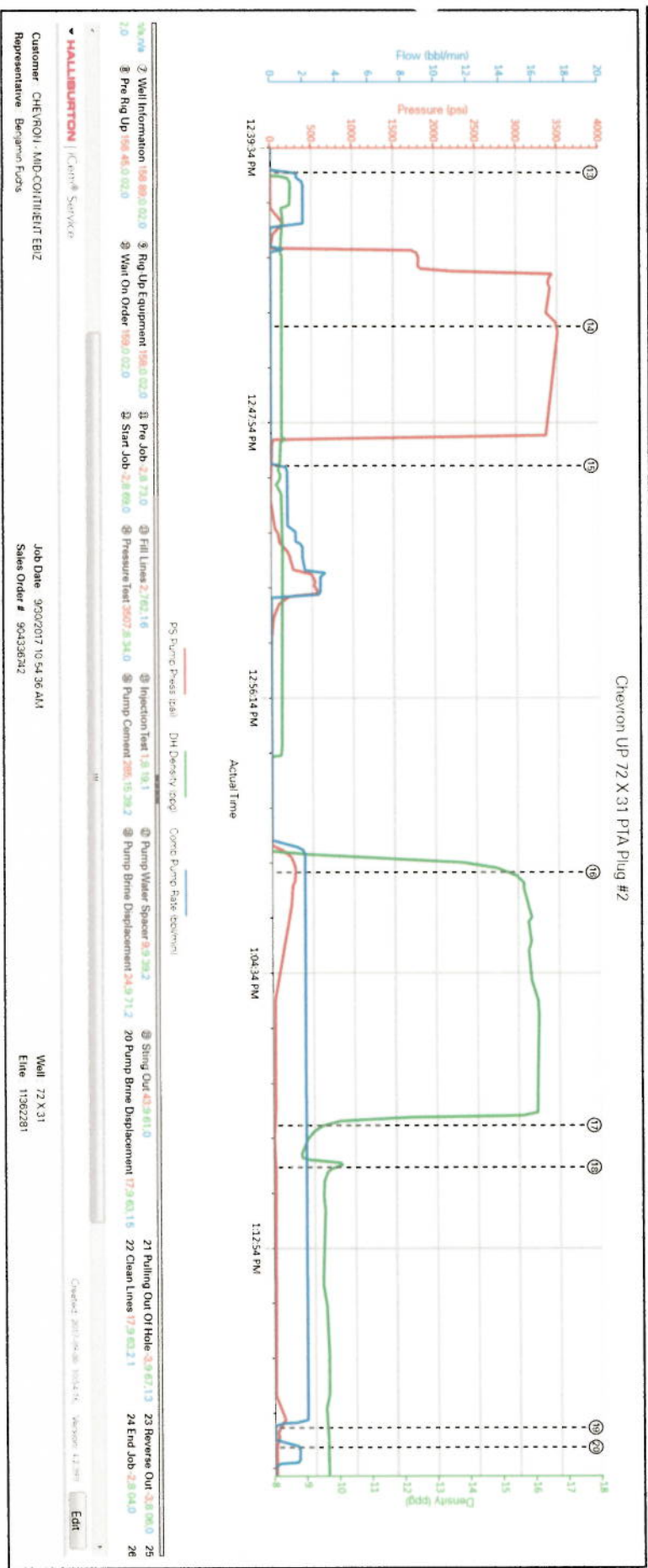
### 2.1 Pressure Test.png



## 2.2 Injection Test.png



2.3 Job Chart.png



## 2.4 Job Chart No Events.png

