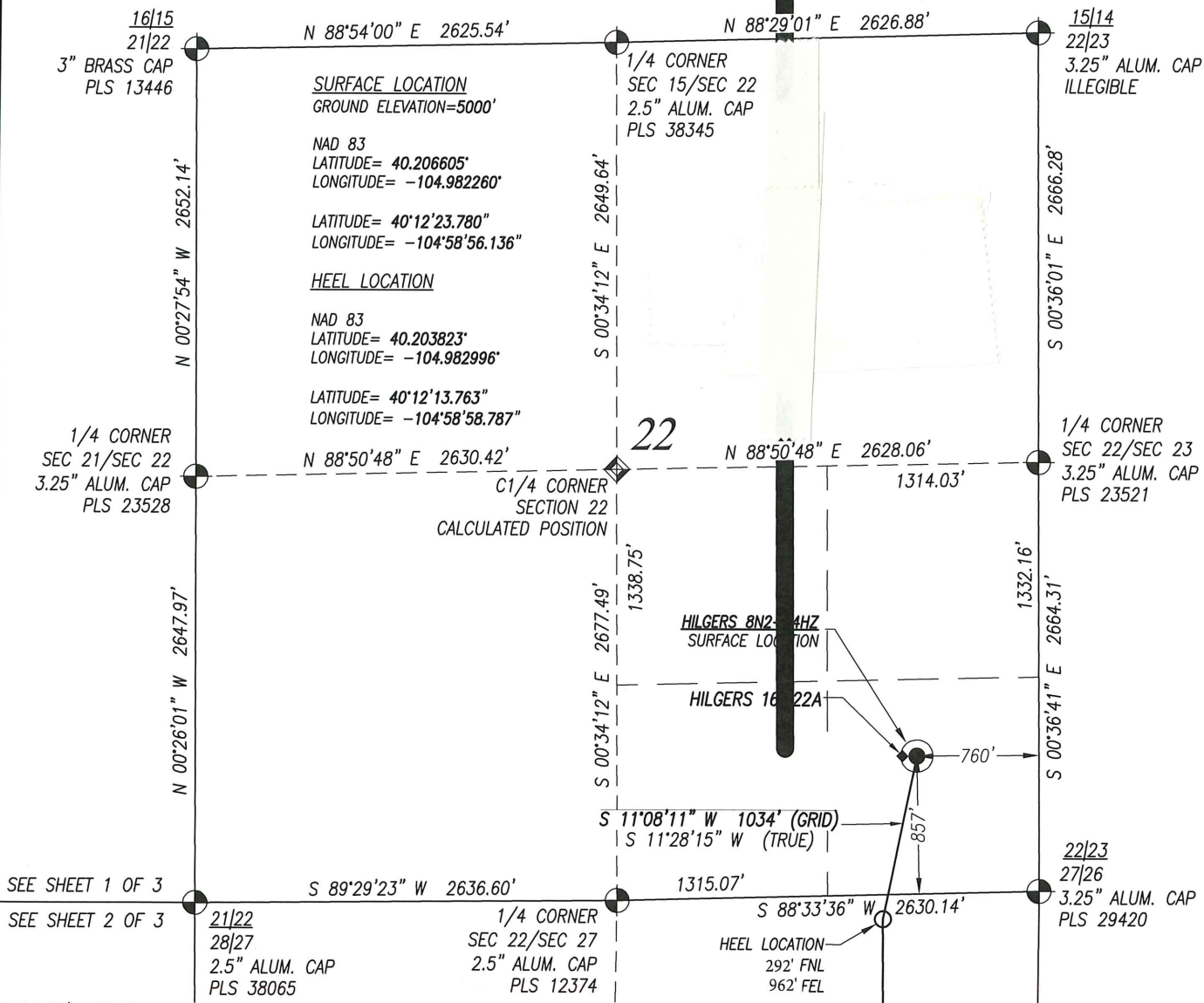


# WELL LOCATION CERTIFICATE: HILGERS 8N2-34HZ SECTION 22, TOWNSHIP 3 NORTH, RANGE 68 WEST, 6TH P.M.



## SURVEYOR'S CERTIFICATION:

I, Douglas W. Chinn, a licensed professional land surveyor in the state of Colorado do hereby certify to KERR-MCGEE OIL & GAS ONSHORE LP that the survey and well location certificate shown hereon were done by me or under my direct supervision and that the drawing shown hereon accurately depicts the proposed location of the well. this certificate does not represent a land survey plat or improvement survey plat as defined by c.r.s. 38-51-102 and cannot be relied upon to determine ownership.

Douglas W. Chinn, PLS #37070  
FOR AND ON BEHALF OF ACKLAM, INC.  
195 Telluride Street Suite 7  
Brighton CO 80601

PREPARED FOR:



**Kerr-McGee Oil & Gas Onshore L.P.**  
1099 18th Street  
Denver, Colorado 80202

**Acklam, Inc.**

DATE SURVEYED: 06/25/2015

DATE DRAFTED: 09/17/2015

DRAFTED BY: SMF CHK BY: JMP

JOB No. 155004

REVISED: 10/26/2016

## WELL LOCATION CERTIFICATE

**HILGERS 8N2-34HZ**

**SURFACE** 857' FSL 760' FEL SEC. 22  
GROUND ELEVATION=5000'

**HEEL** 292' FNL 962' FEL SEC. 27  
**BOTTOM HOLE** 988' FNL 924' FEL SEC. 34

**SE1/4 SE1/4**  
**SECTION 22, T3N, R68W, 6TH PM**  
**WELD COUNTY, COLORADO**

Heel & Bottom Hole Location  
changed by C Light 10/04/17

## NOTES:

- Found Section Corner
- Calculated Section Corner
- Basis of Elevations: NAVD88 (GEOID12).
- Basis of Bearings: Colorado coordinate system 1983 north zone ("GRID").
- Basis of Distances: GRID; Combined Factor=0.999717864.
- GPS Operator: **Jeff Hawkins** PDOP 2.1
- See attachments for existing improvements within 500 feet of the well pad.
- Well footages are measured at right angles to the section lines.
- The Bottom Hole Location bears **S 01°02'46" W 7908'** from the Surface Location.
- Existing well Hilgers 16-22A bears **S 89°59'23" W 90'** from the Surface Location.

NOTICE: According to Colorado law you must commence any legal action based upon any defect in this survey within three years after you first discover such defect. In no event may any action based upon any defect in this survey be commenced more than ten years from the date of the certification shown hereon.

SHEET 1 OF 3

# WELL LOCATION CERTIFICATE: HILGERS 8N2-34HZ

## SECTION 27, TOWNSHIP 3 NORTH, RANGE 68 WEST, 6TH P.M.

SEE SHEET 1 OF 3

SEE SHEET 2 OF 3

21/22  
28/27

2.5" ALUM. CAP  
PLS 38065

1/4 CORNER  
SEC 22/SEC 27  
2.5" ALUM. CAP  
PLS 12374

1315.07'

S 88°33'36" W 2630.14'  
HEEL LOCATION  
292'FNL  
962'FEL

22/23  
27/26

3.25" ALUM. CAP  
PLS 29420

N 00°22'47" W 2651.23'

S 00°23'43" W 2632.98'

N 00°06'36" E 2656.62'

1/4 CORNER  
SEC 28/SEC 27  
2.5" ALUM. CAP  
PLS 30462

N 89°04'50" E 2601.09'

C1/4 CORNER  
SECTION 27  
CALCULATED POSITION

N 89°04'50" E 2642.71'

1/4 CORNER  
SEC 27/SEC 26  
3.25" ALUM. CAP  
PLS 29420

N 00°22'28" W 2653.25'

S 00°23'43" W 2655.62'

N 00°06'16" E 2657.20'

28/27

33/34  
3.25" ALUM. CAP  
PLS 34591

1/4 CORNER  
SEC 27/SEC 34  
CALCULATED POSITION  
FROM RECORD INFO.

S 89°07'15" W 2656.16'

1328.08'

27/26

34/35  
3.25" ALUM. CAP  
PLS 29420

SEE SHEET 2 OF 3

SEE SHEET 3 OF 3

SURVEYOR'S CERTIFICATION:

I, Douglas W. Chinn, a licensed professional land surveyor in the state of Colorado do hereby certify to KERR-MCGEE OIL & GAS ONSHORE LP. that the survey and well location certificate shown hereon were done by me or under my direct supervision and that the drawing shown hereon accurately depicts the proposed location of the well. this certificate does not represent a land survey plat or improvement survey plat as defined by c.r.s. 38-51-102 and cannot be relied upon to determine ownership.



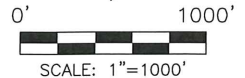
Heel & Bottom Hole Location  
changed by C Light 10/04/17

Douglas W. Chinn, PLS #37070  
FOR AND ON BEHALF OF ACKLAM, INC.  
195 Telluride Street Suite 7  
Brighton CO 80601

NOTES:

- Found Section Corner
- Calculated Section Corner
- Basis of Elevations: NAVD88 (GEOID12).
- Basis of Bearings: Colorado coordinate system 1983 north zone ("GRID").
- Basis of Distances: GRID; Combined Factor=0.999717864.
- GPS Operator: Jeff Hawkins PDOP 2.1
- See attachments for existing improvements within 500 feet of the well pad.
- Well footages are measured at right angles to the section lines.
- The Bottom Hole Location bears S 01°02'46" W 7908' from the Surface Location.
- Existing well Hilgers 16-22A bears S 89°59'23" W 90' from the Surface Location.

NOTICE: According to Colorado law you must commence any legal action based upon any defect in this survey within three years after you first discover such defect. In no event may any action based upon any defect in this survey be commenced more than ten years from the date of the certification shown hereon.



PREPARED FOR:



**Kerr-McGee Oil & Gas Onshore L.P.**  
1099 18th Street  
Denver, Colorado 80202

**Acklam, Inc.**

DATE SURVEYED: 06/25/2015

DATE DRAFTED: 09/17/2015

DRAFTED BY: SMF CHK BY: JMP

JOB No. 155004

REVISED: 10/26/2016

### WELL LOCATION CERTIFICATE

**HILGERS 8N2-34HZ**

**SURFACE** 857' FSL 760' FEL SEC. 22  
GROUND ELEVATION=5000'

**HEEL** 292'FNL 962'FEL SEC. 27  
**BOTTOM HOLE** 988' FNL 924'FEL SEC. 34

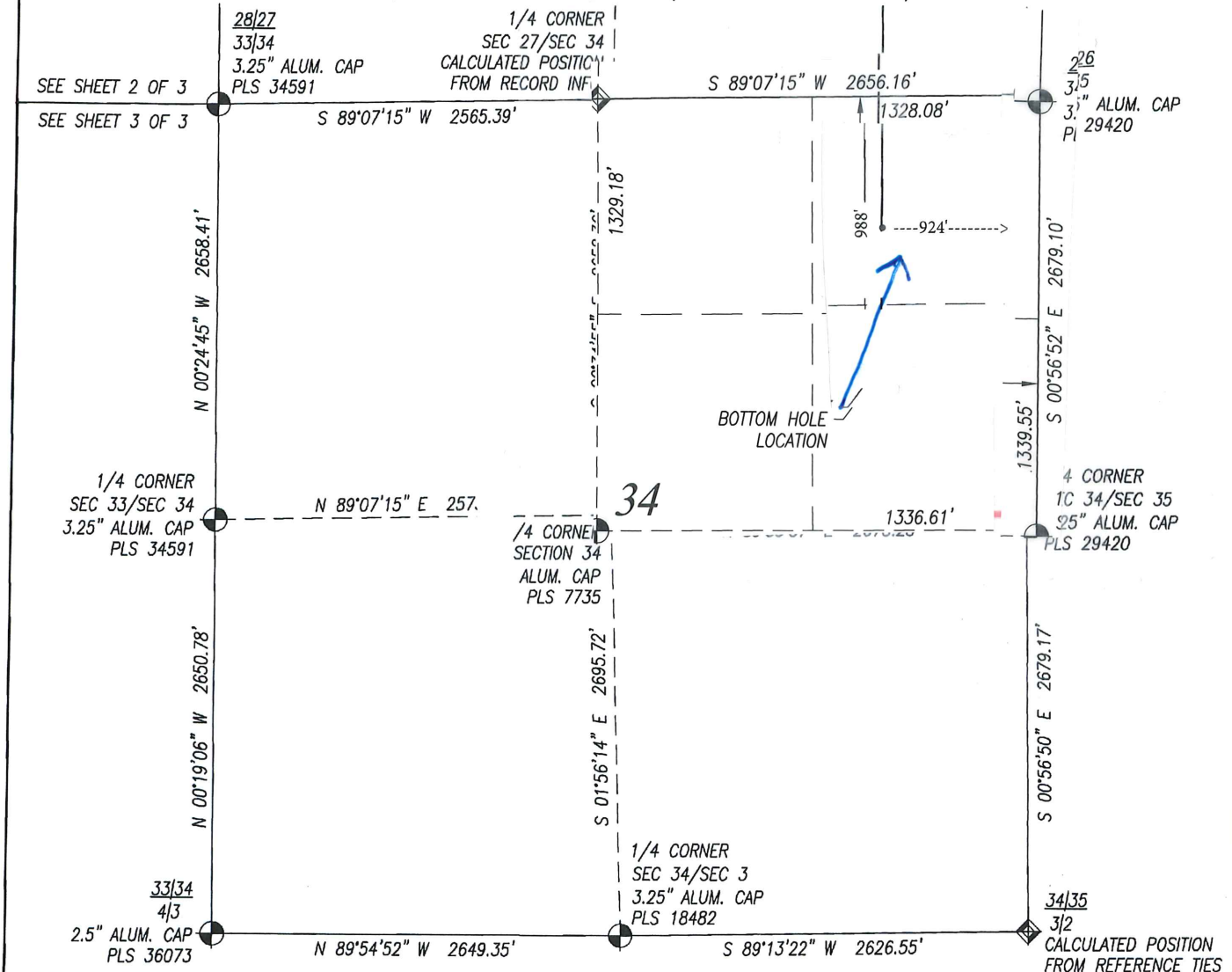
**SE1/4 SE1/4**  
**SECTION 22, T3N, R68W, 6TH PM**  
**WELD COUNTY, COLORADO**

SHEET 2 OF 3



# WELL LOCATION CERTIFICATE: HILGERS 8N2-34HZ

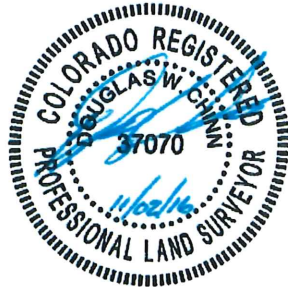
## SECTION 34, TOWNSHIP 3 NORTH, RANGE 68 WEST, 6TH P.M.



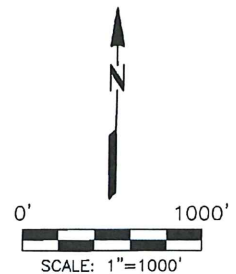
### SURVEYOR'S CERTIFICATION:

I, Douglas W. Chinn, a licensed professional land surveyor in the state of Colorado do hereby certify to KERR-MCGEE OIL & GAS ONSHORE LP that the survey and well location certificate shown hereon were done by me or under my direct supervision and that the drawing shown hereon accurately depicts the proposed location of the well. This certificate does not represent a land survey plat or improvement survey plat as defined by c.r.s. 38-51-102 and cannot be relied upon to determine ownership.

Douglas W. Chinn, PLS #37070  
FOR AND ON BEHALF OF ACKLAM, INC.  
195 Telluride Street Suite 7  
Brighton CO 80601



Heel & Bottom Hole Location  
changed by C Light 10/04/17



### NOTES:

- Found Section Corner
- Calculated Section Corner
- Basis of Elevations: NAVD88 (GEOID12).
- Basis of Bearings: Colorado coordinate system 1983 north zone ('GRID').
- Basis of Distances: GRID; Combined Factor=0.999717864.
- GPS Operator: Jeff Hawkins PDOP 2.1
- See attachments for existing improvements within 500 feet of the well pad.
- Well footages are measured at right angles to the section lines.
- The Bottom Hole Location bears S 01°02'46" W 7908' from the Surface Location.
- Existing well Hilgers 16-22A bears S 89°59'23" W 90' from the Surface Location.

NOTICE: According to Colorado law you must commence any legal action based upon any defect in this survey within three years after you first discover such defect. In no event may any action based upon any defect in this survey be commenced more than ten years from the date of the certification shown hereon.

SHEET 3 OF 3

### PREPARED FOR:



Kerr-McGee Oil &  
Gas Onshore L.P.  
1099 18th Street  
Denver, Colorado 80202

Acklam, Inc.

### WELL LOCATION CERTIFICATE

HILGERS 8N2-34HZ

SURFACE 857' FSL 760' FEL SEC. 22  
GROUND ELEVATION=5000'

HEEL 292' FNL 962' FEL SEC. 27  
BOTTOM HOLE 988' FNL 924' FEL SEC. 34

SE1/4 SE1/4  
SECTION 22, T3N, R68W, 6TH PM  
WELD COUNTY, COLORADO

DATE SURVEYED: 06/25/2015

DATE DRAFTED: 09/17/2015

DRAFTED BY: SMF CHK BY: JMP

JOB No. 155004 REVISED: 10/26/2016