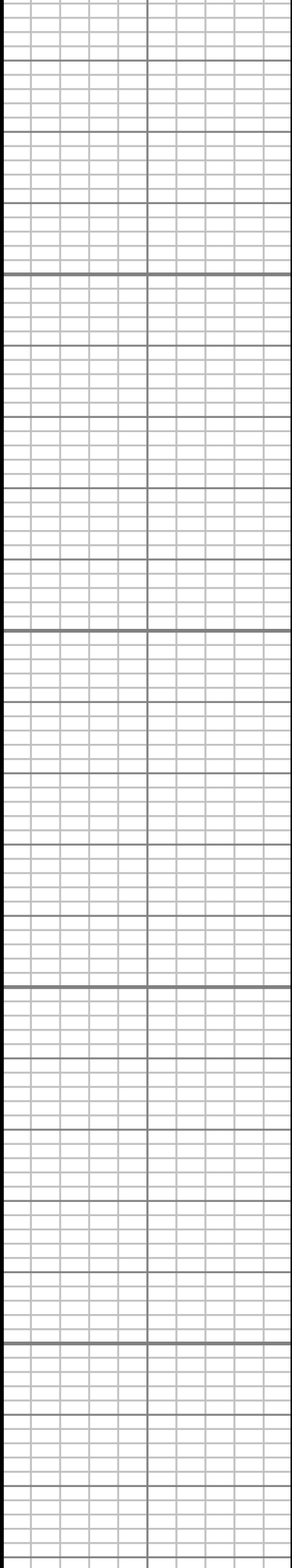


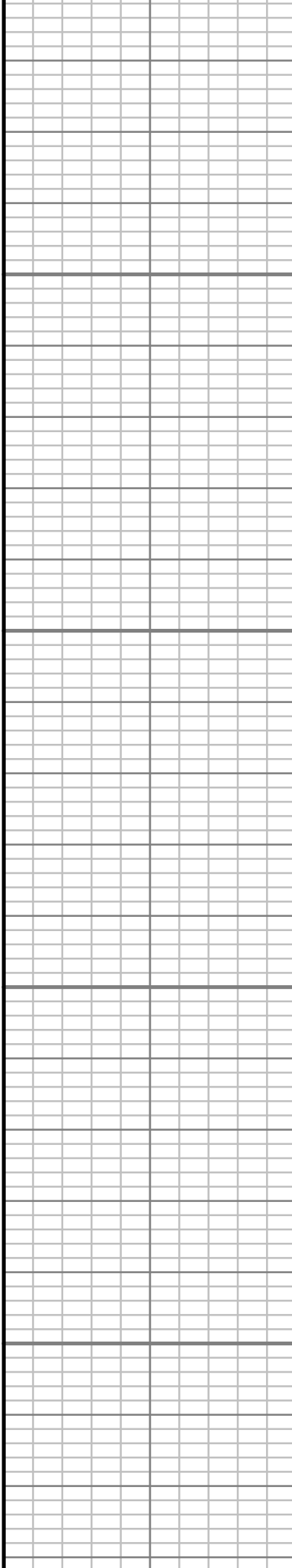
All interpretations are opinions based on inferences from electrical or other measurements and we cannot, and do not guarantee the accuracy or correctness of any interpretations, and we shall not, except in the case of gross or willful negligence on our part, be liable or responsible for any loss, costs, damages or expenses incurred or sustained by anyone resulting from any interpretation made by any of our officers, agents or employees. These interpretations are also subject to our general terms and conditions as set out in our current price schedule.

BILL BARRETT CORP. KUNSEMILLER 5-61-20-0801B2 WATTENBERG FIELD WELD COUNTY, COLORADO 05-123-44298

[illegible]



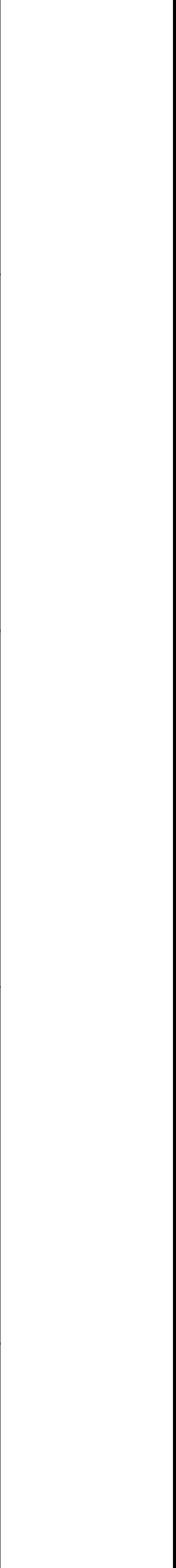
200



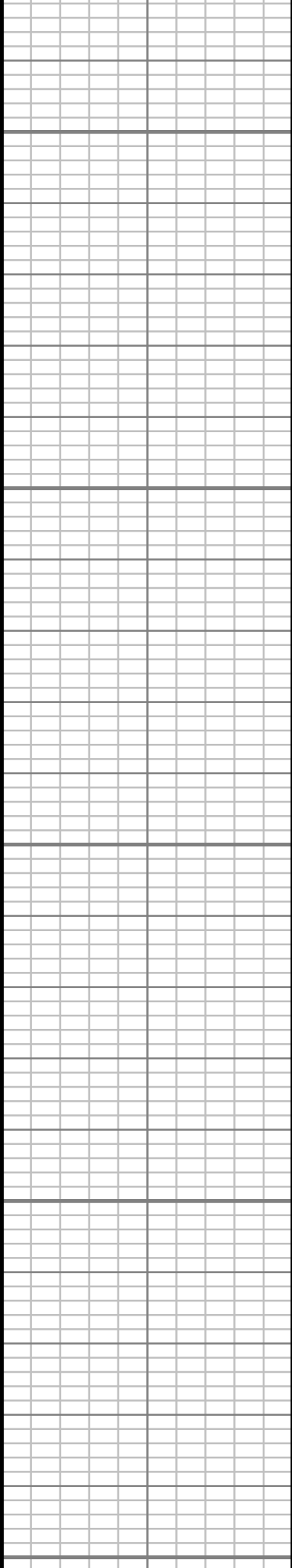
250



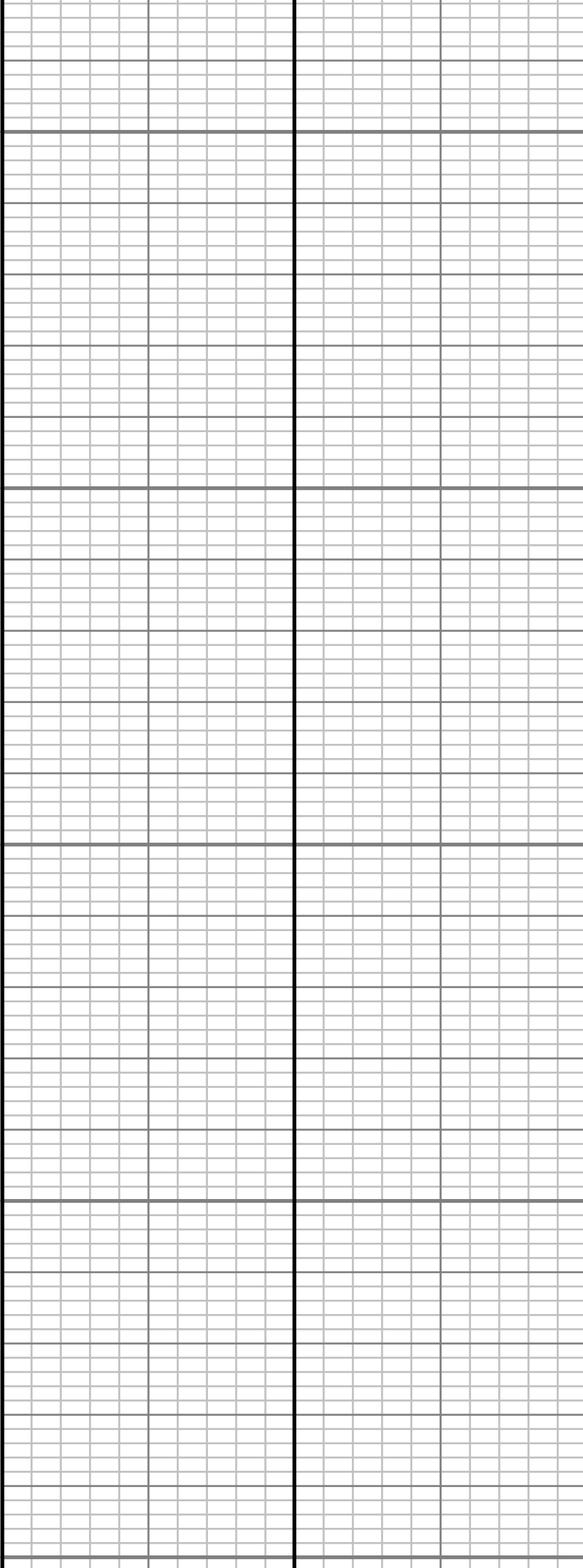
300



350



400

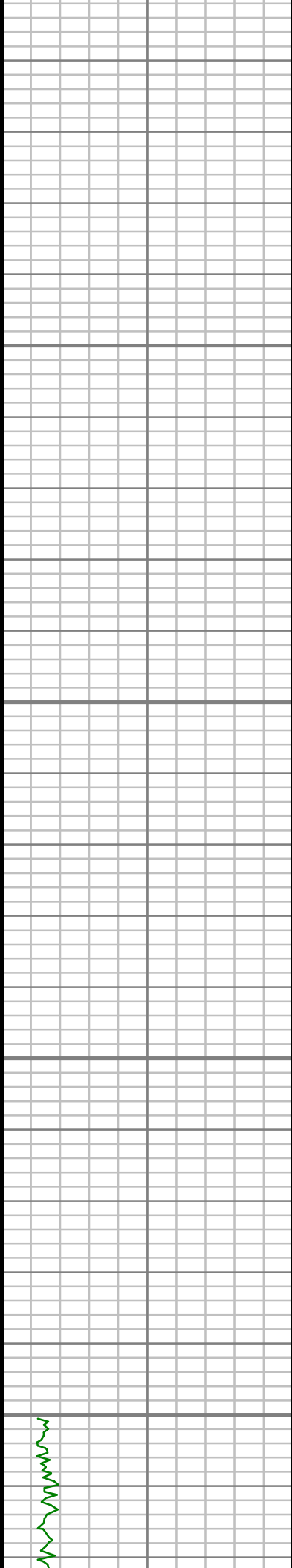


450

500

550

600

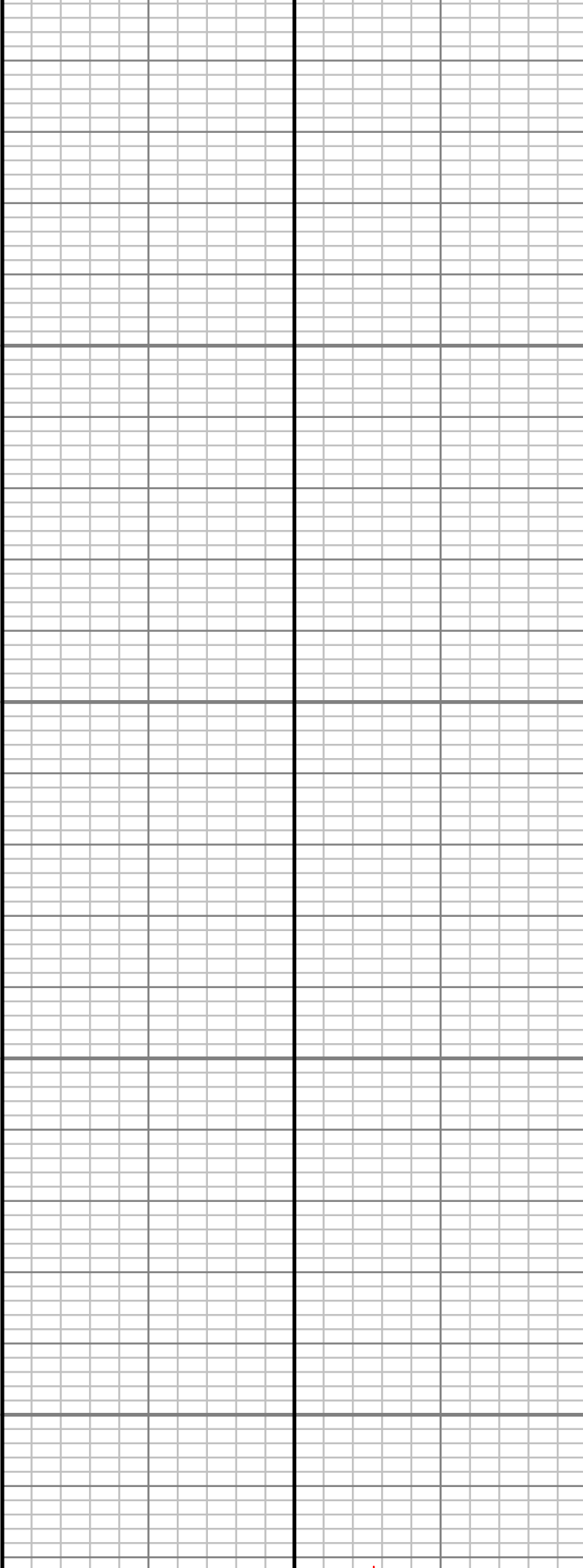


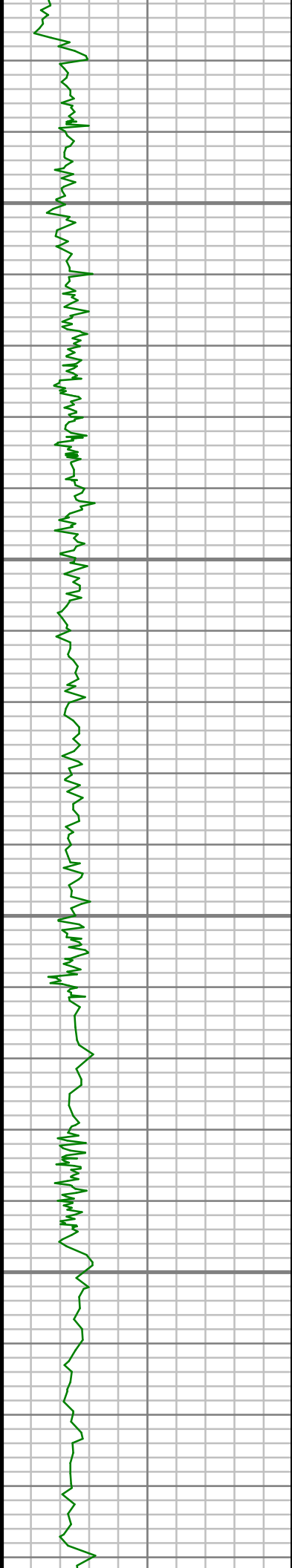
650

700

750

800



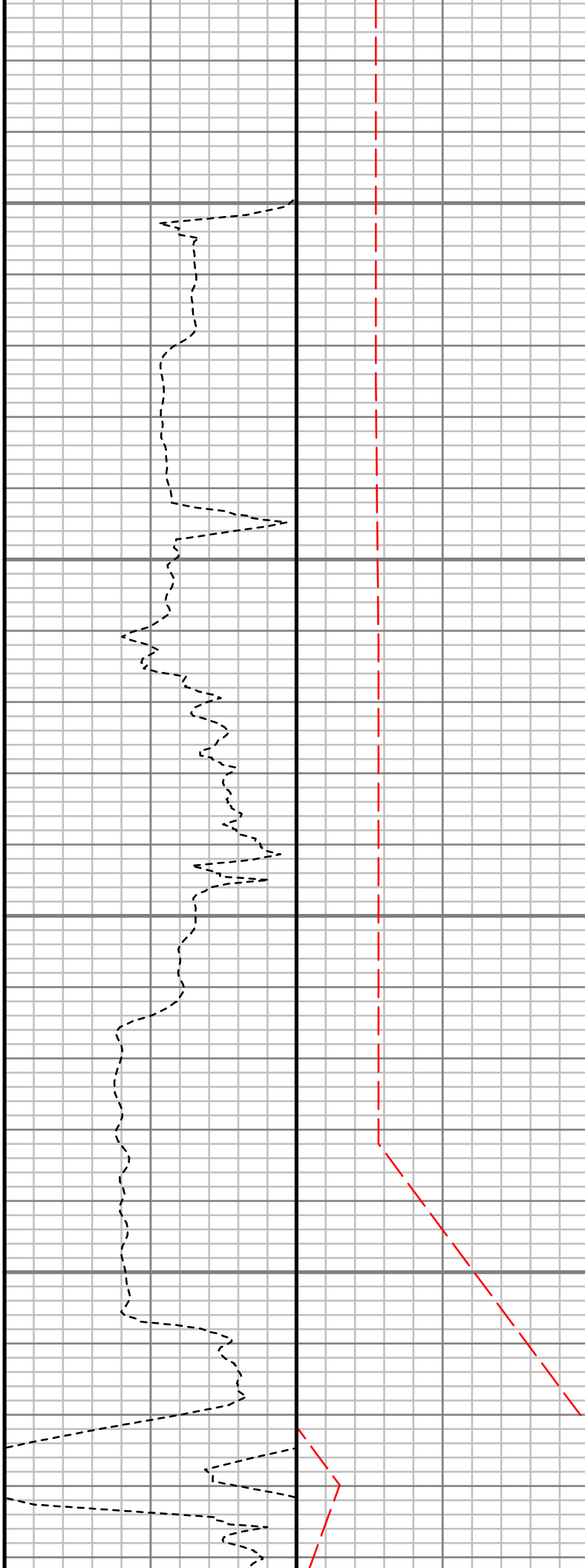


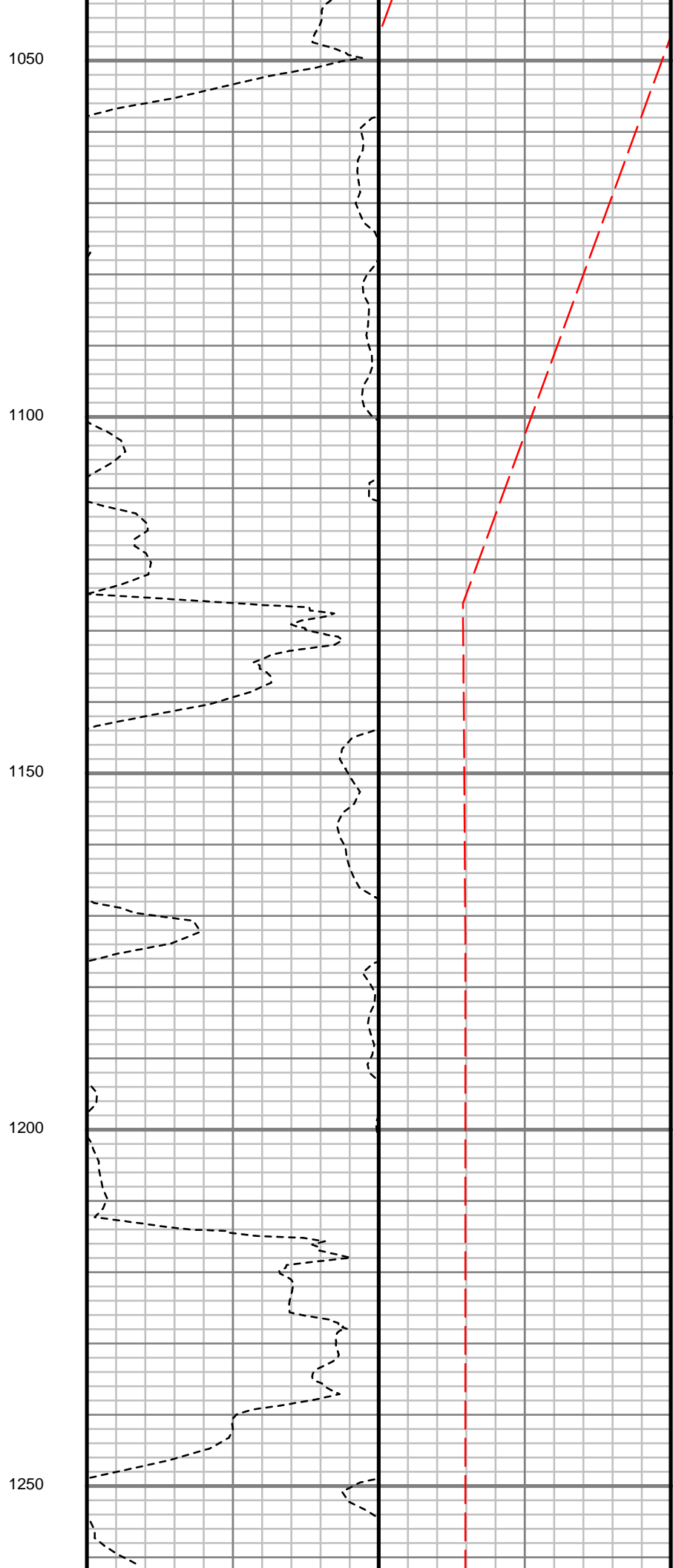
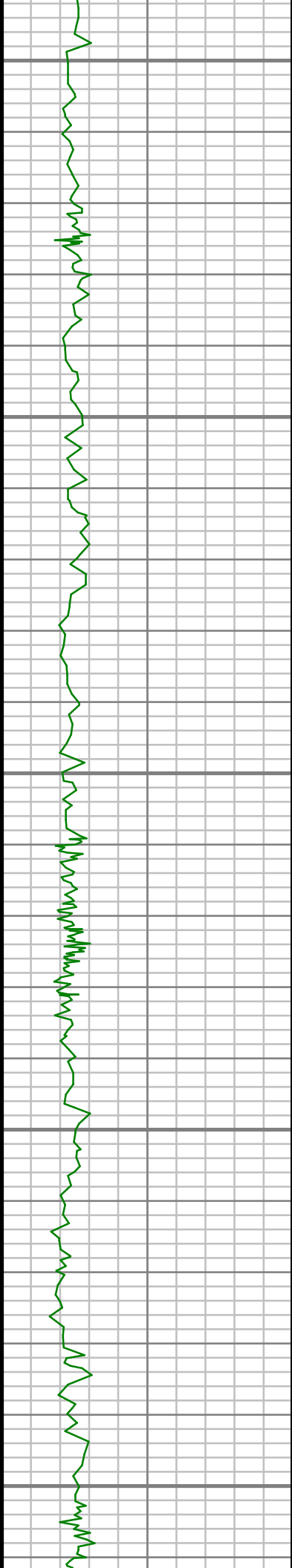
850

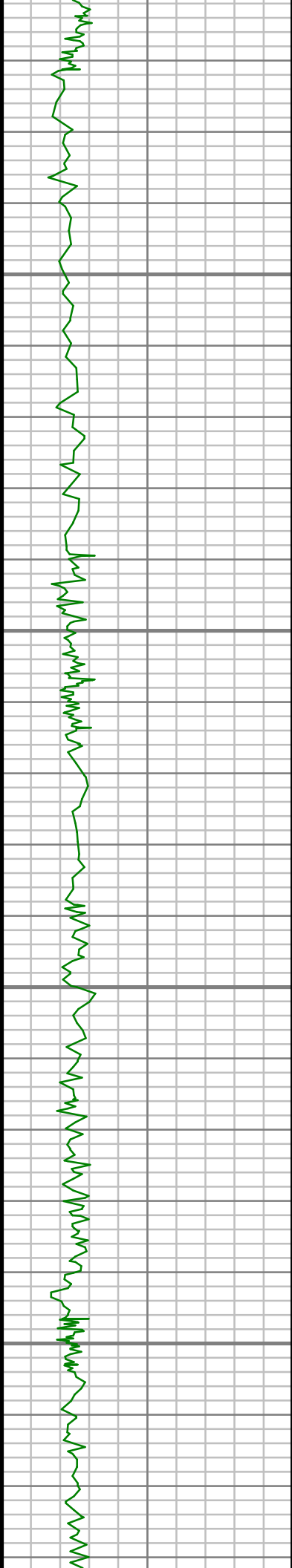
900

950

1000







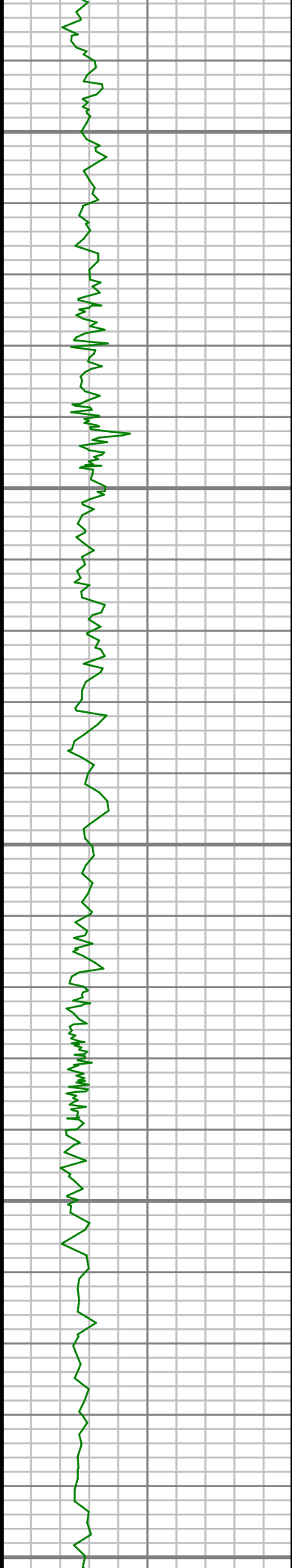
1300

1350

1400

1450





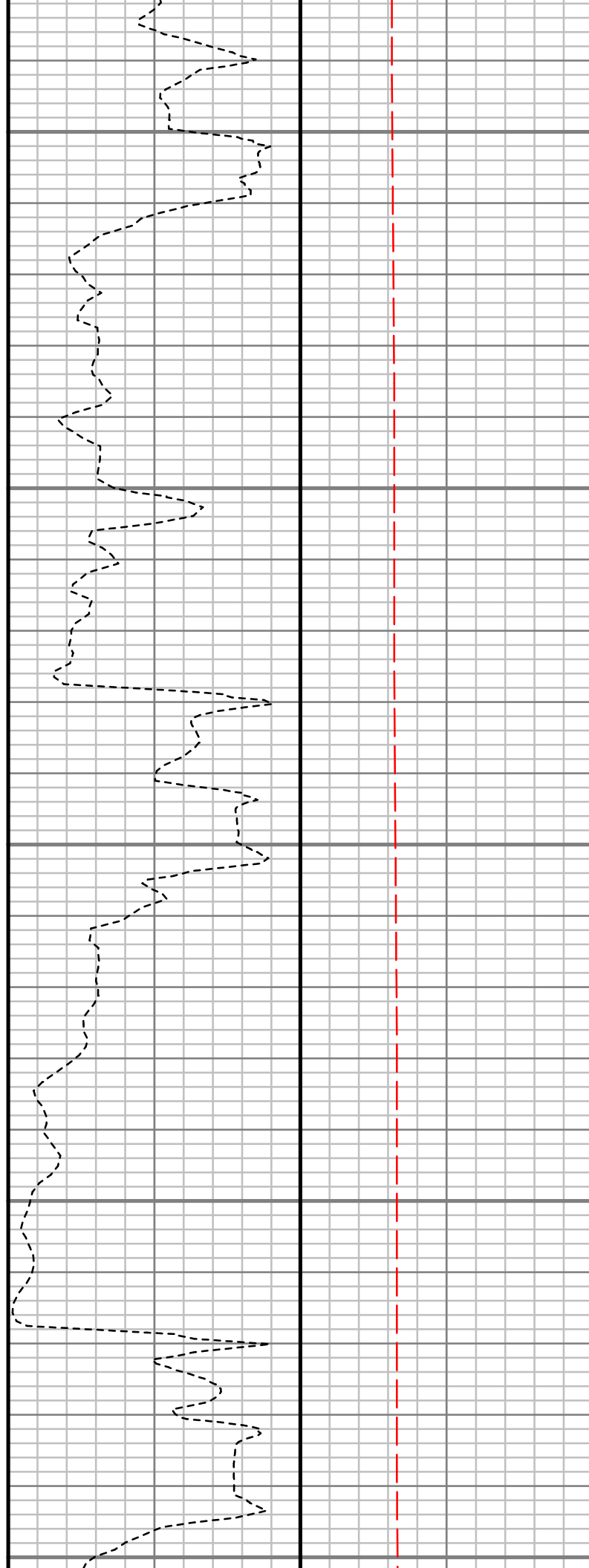
1500

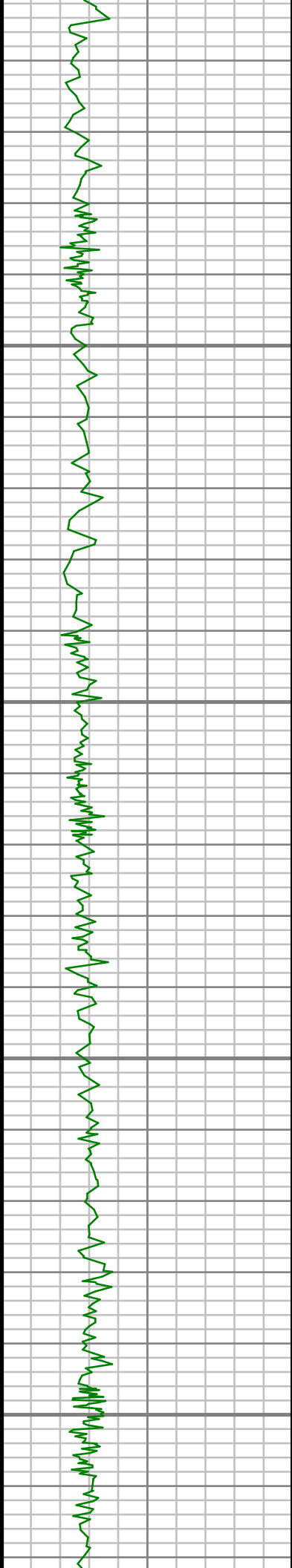
1550

1600

1650

1700



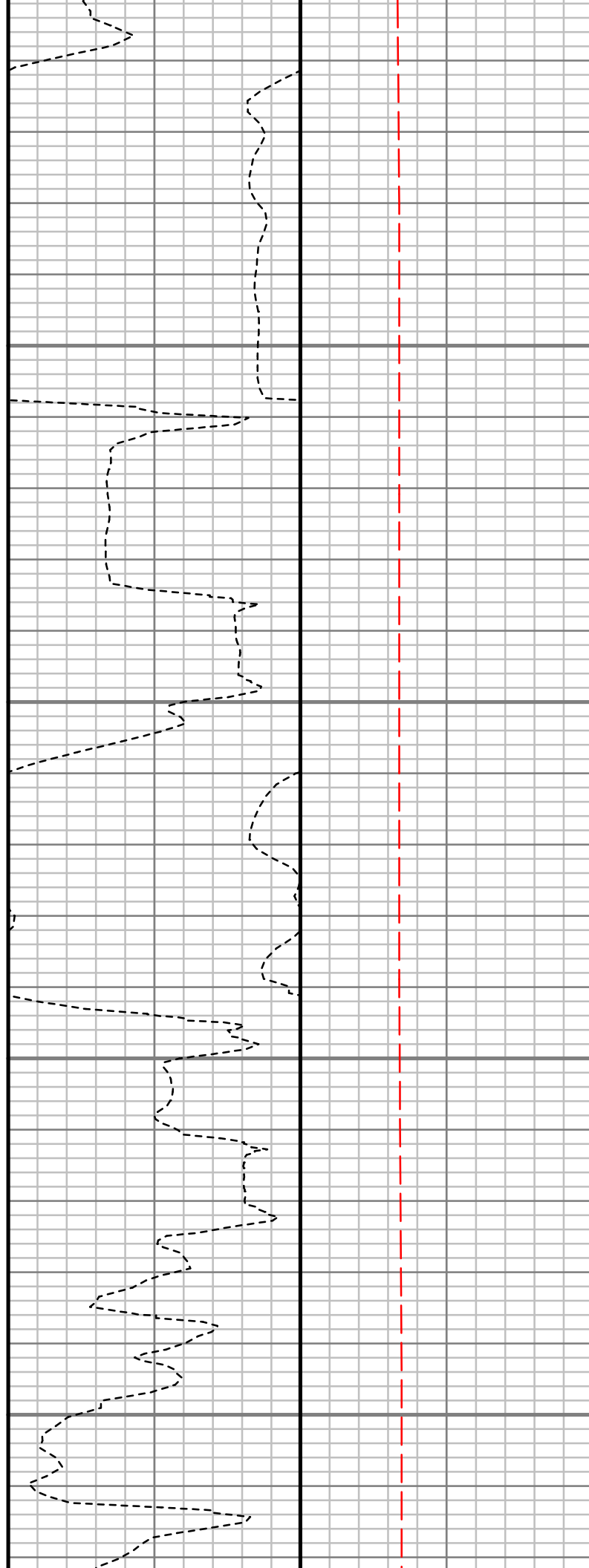


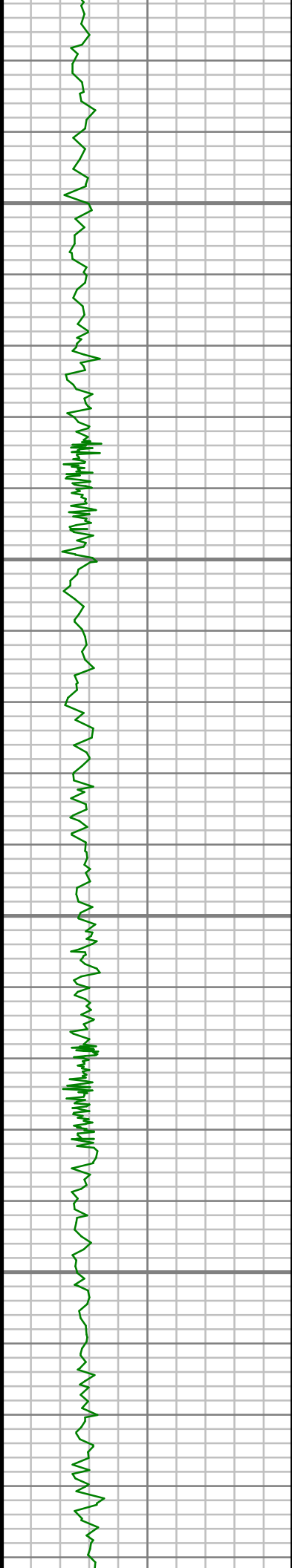
1750

1800

1850

1900



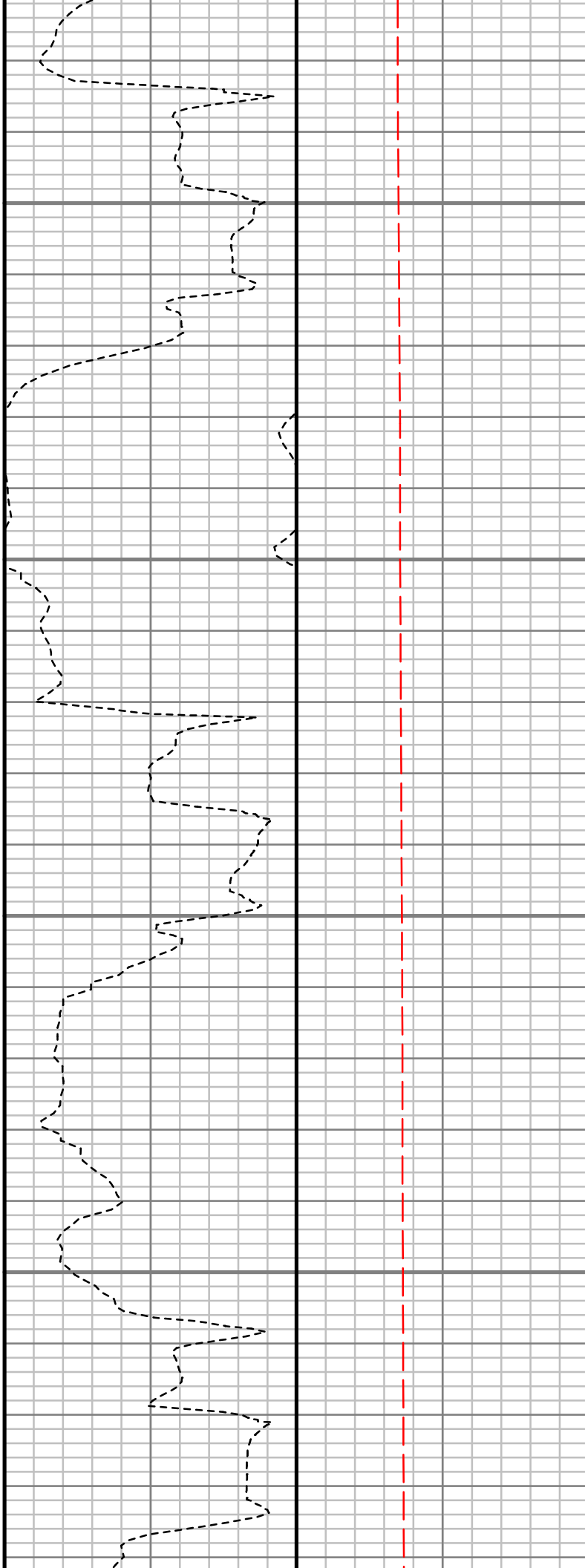


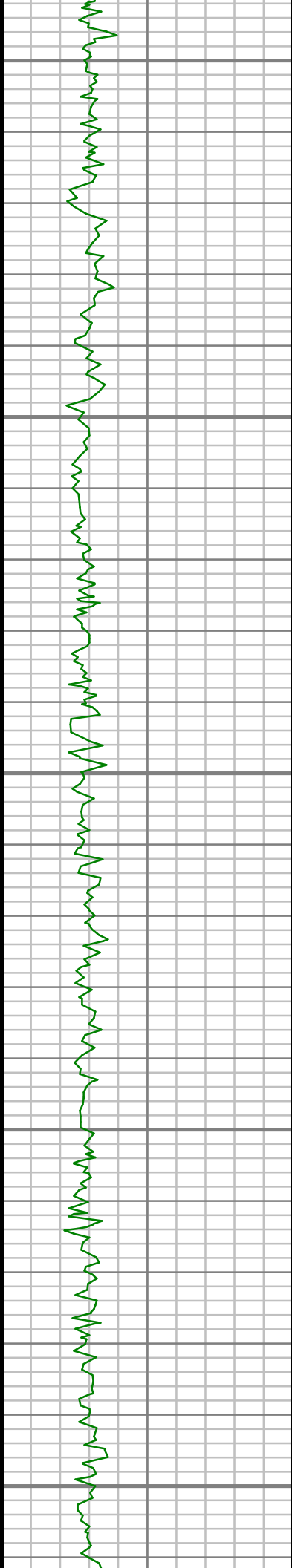
1950

2000

2050

2100





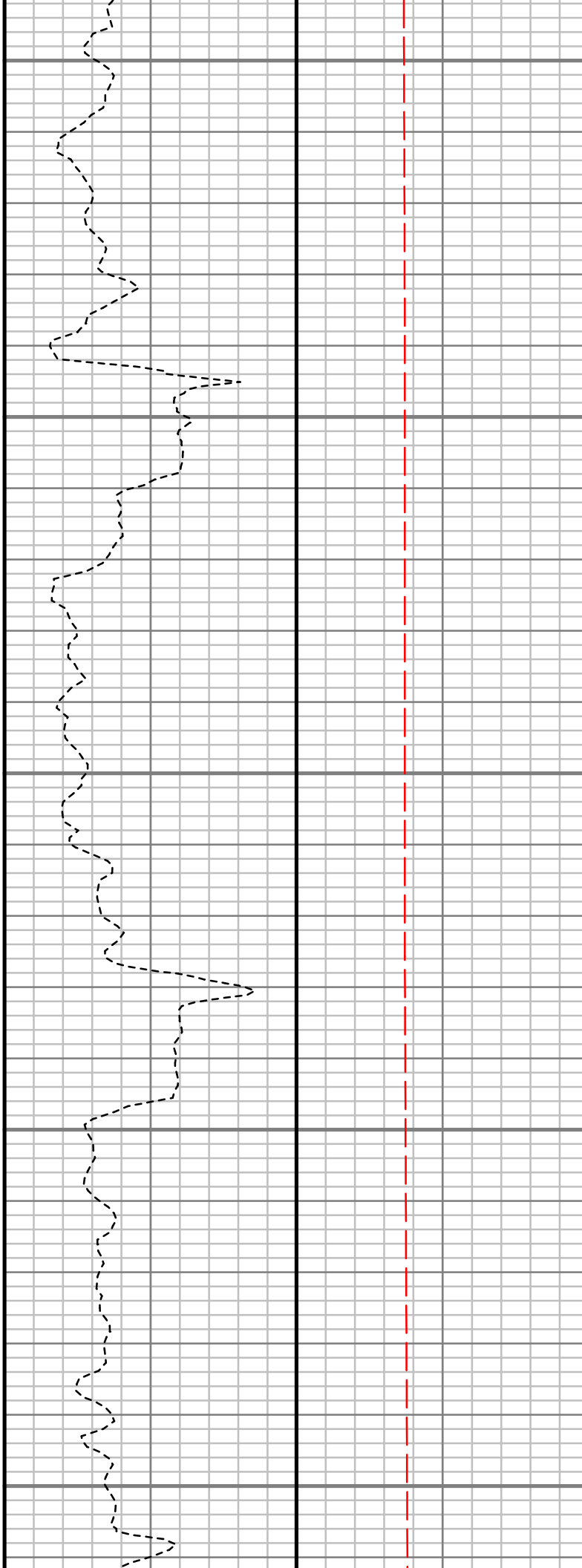
2150

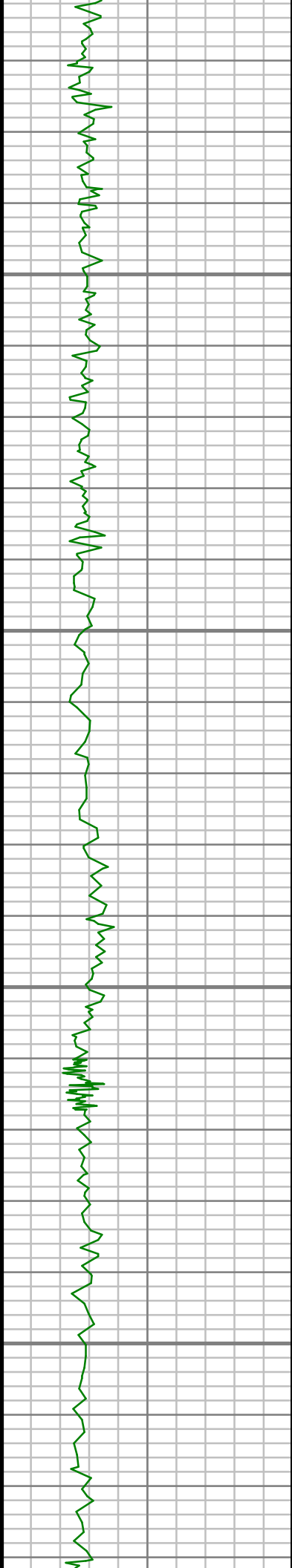
2200

2250

2300

2350



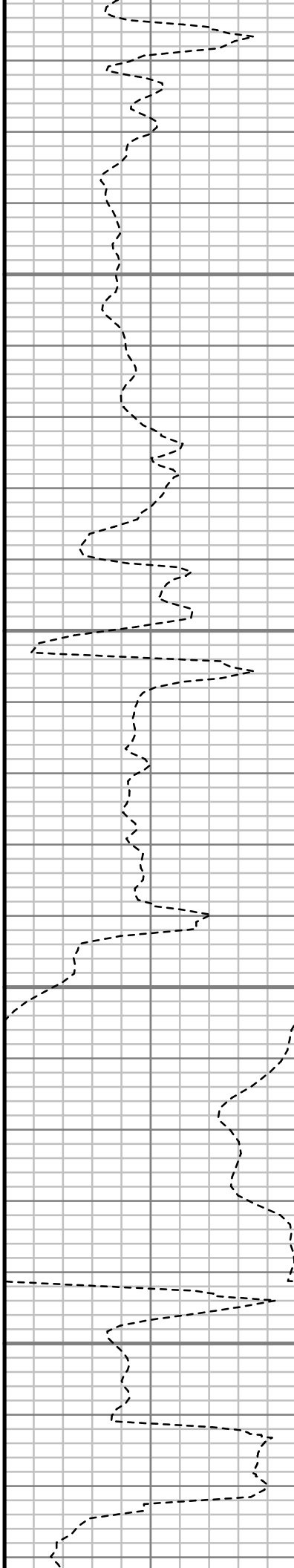


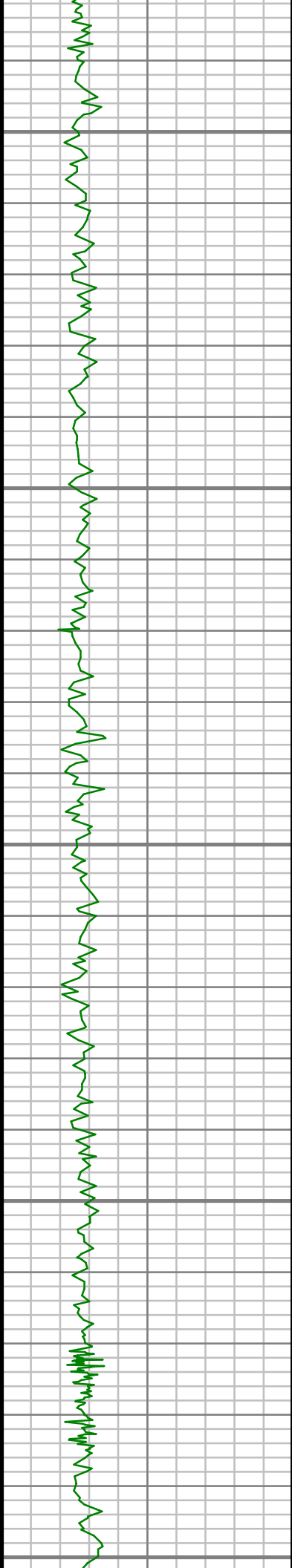
2400

2450

2500

2550





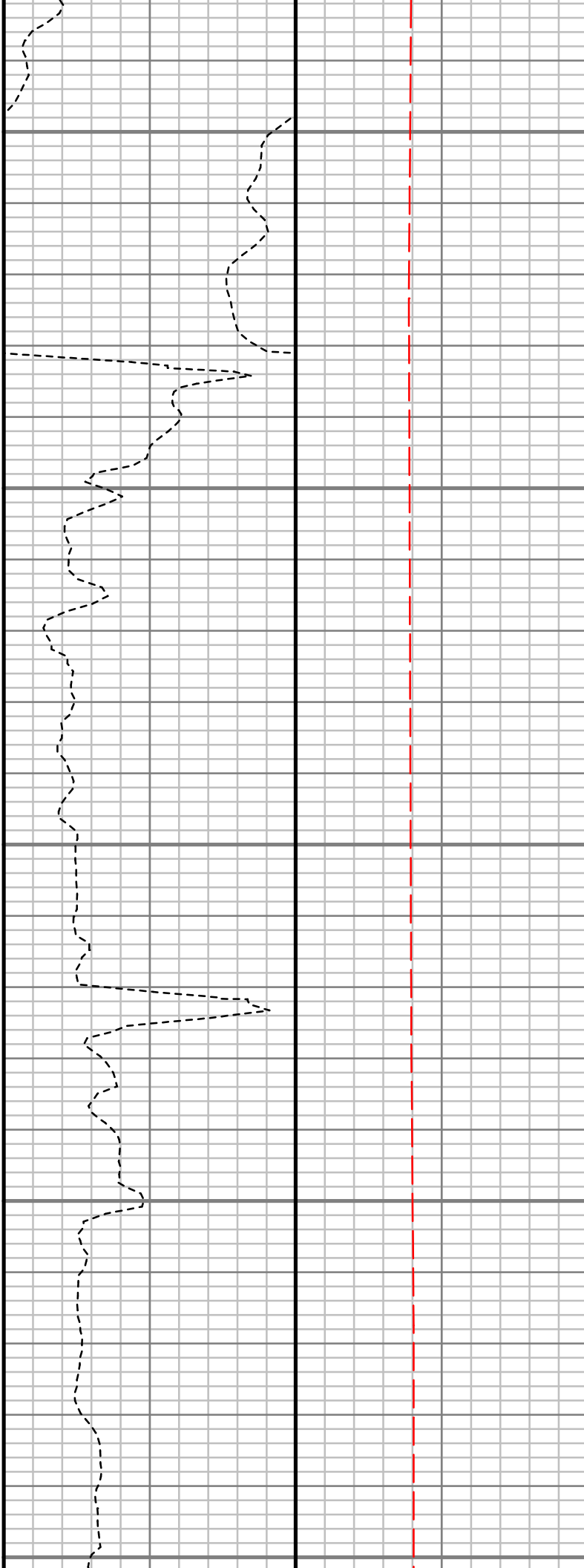
2600

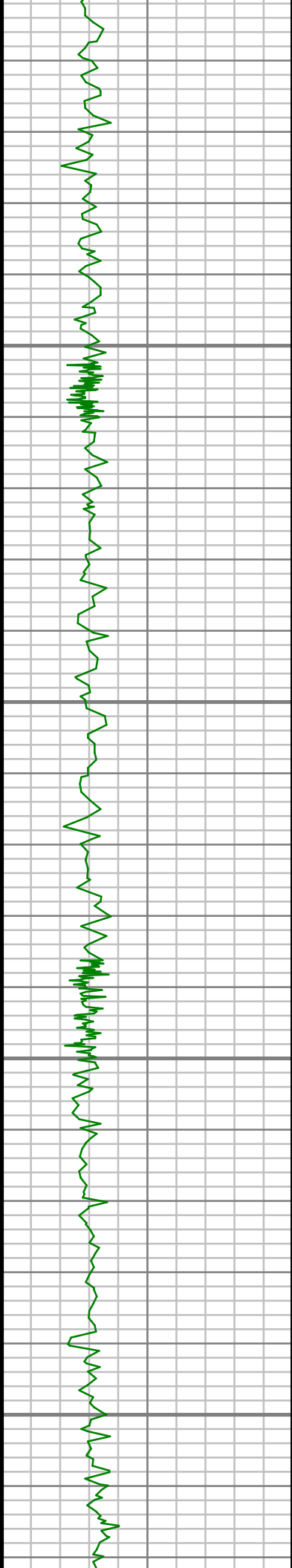
2650

2700

2750

2800



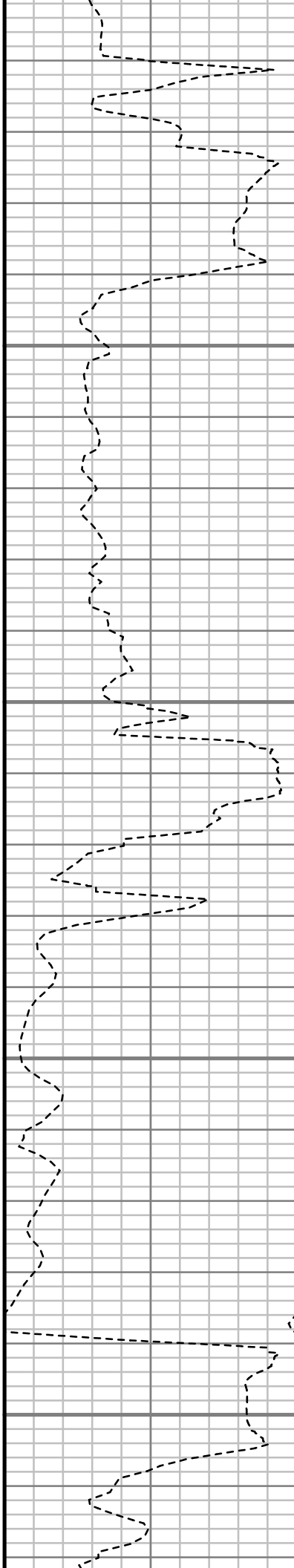


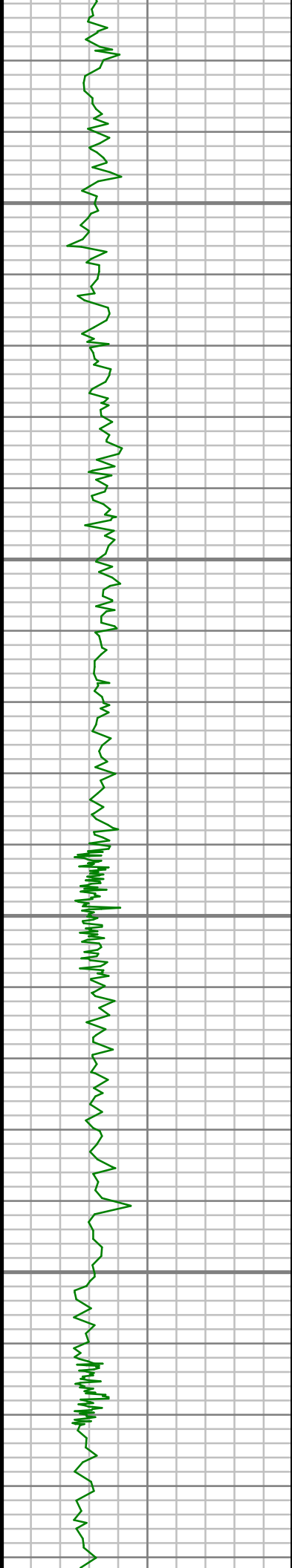
2850

2900

2950

3000



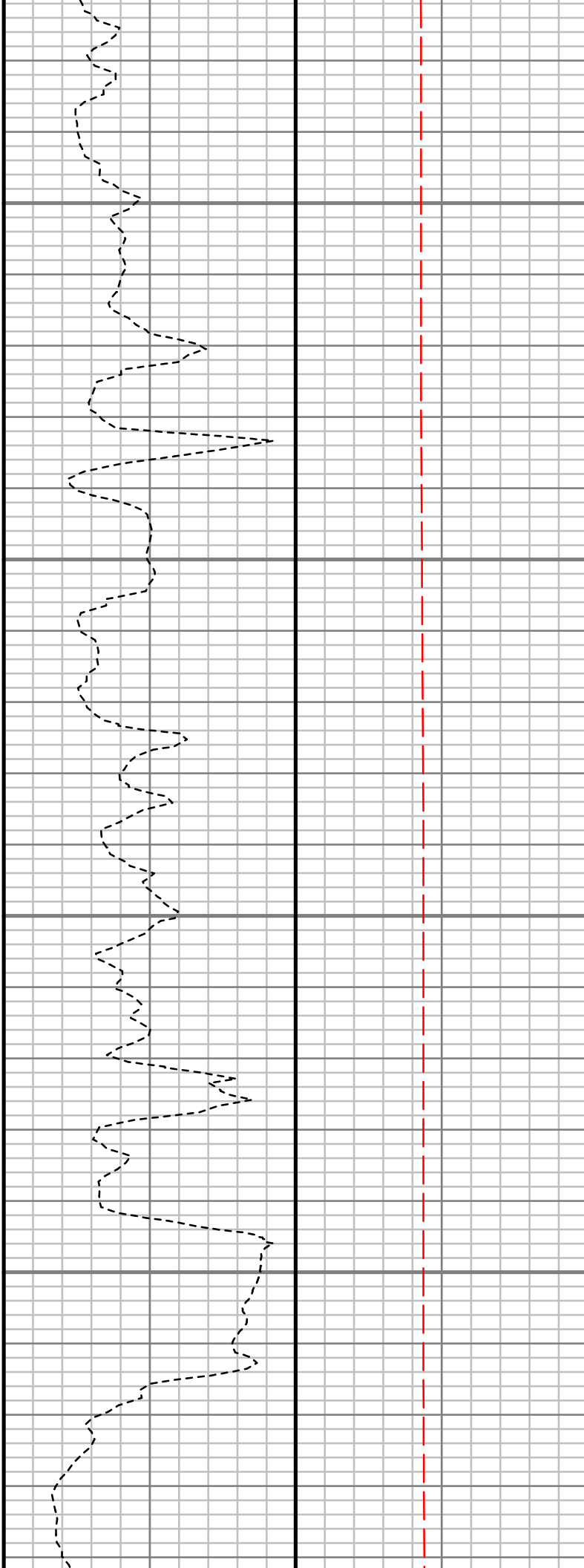


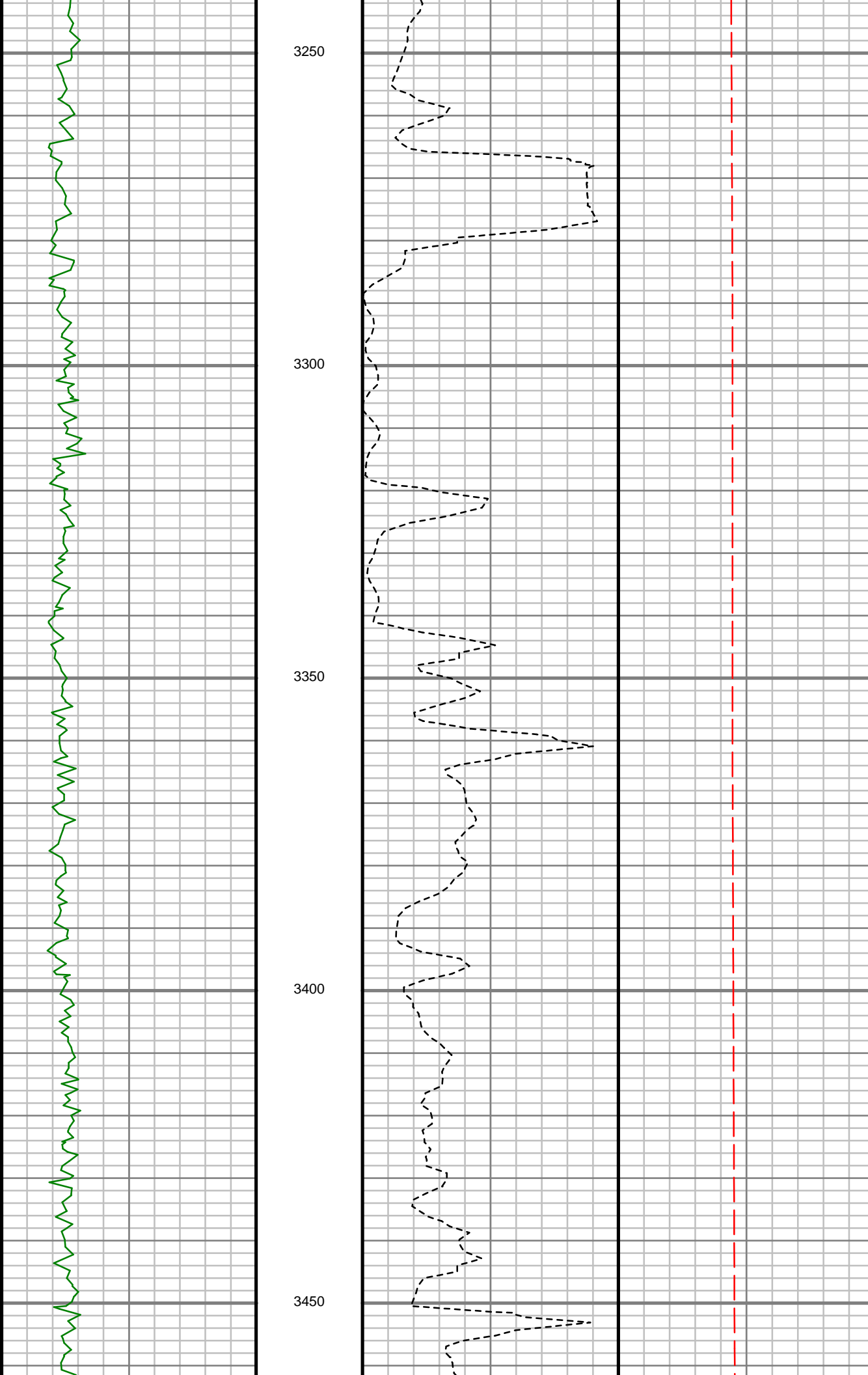
3050

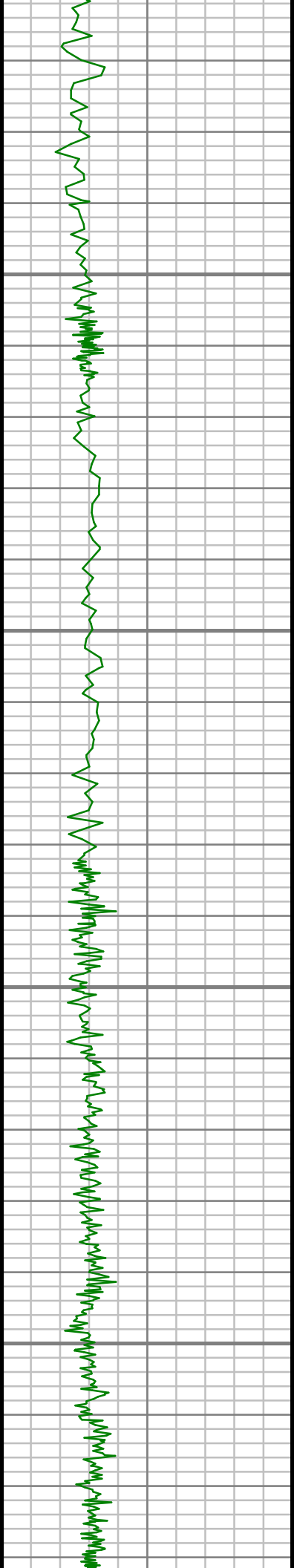
3100

3150

3200





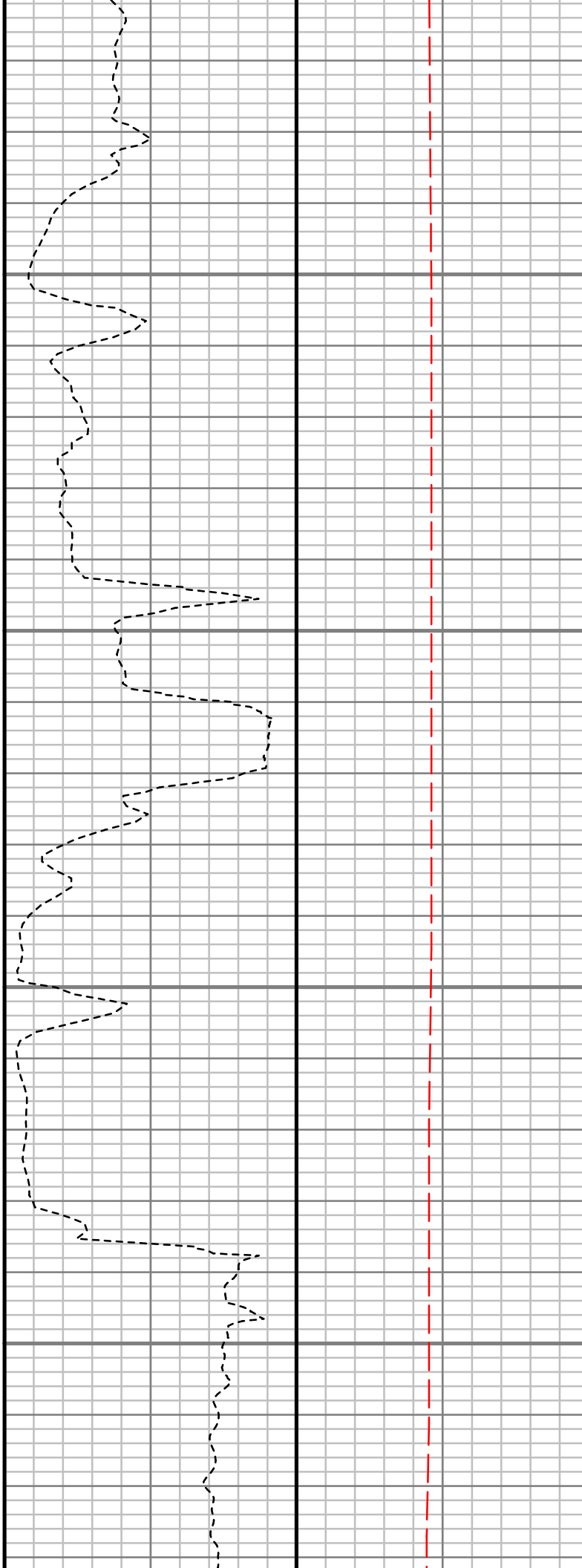


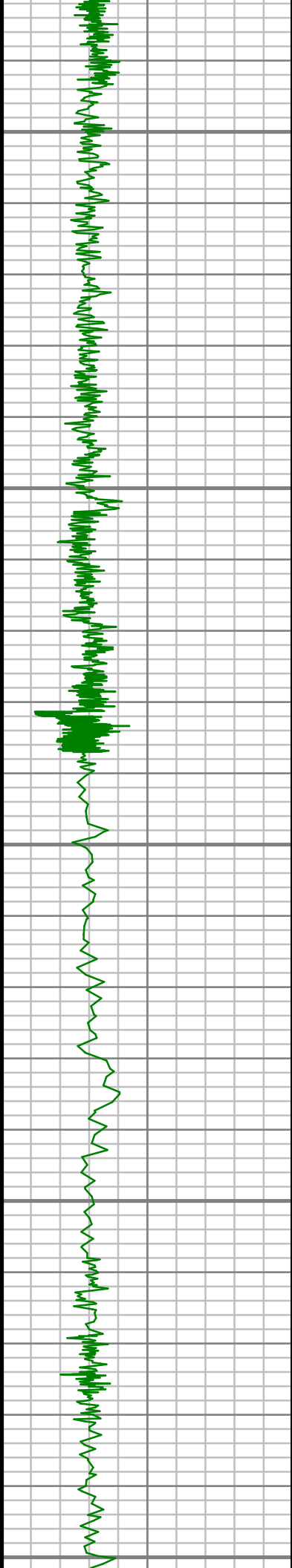
3500

3550

3600

3650





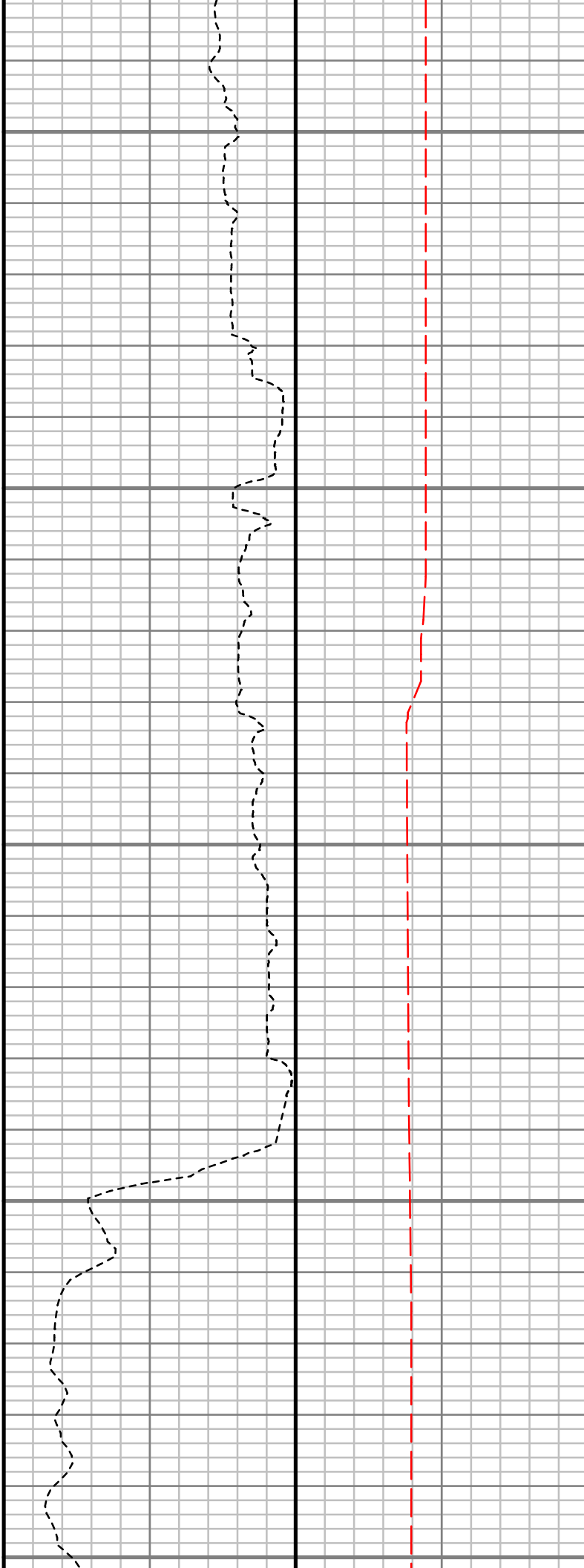
3700

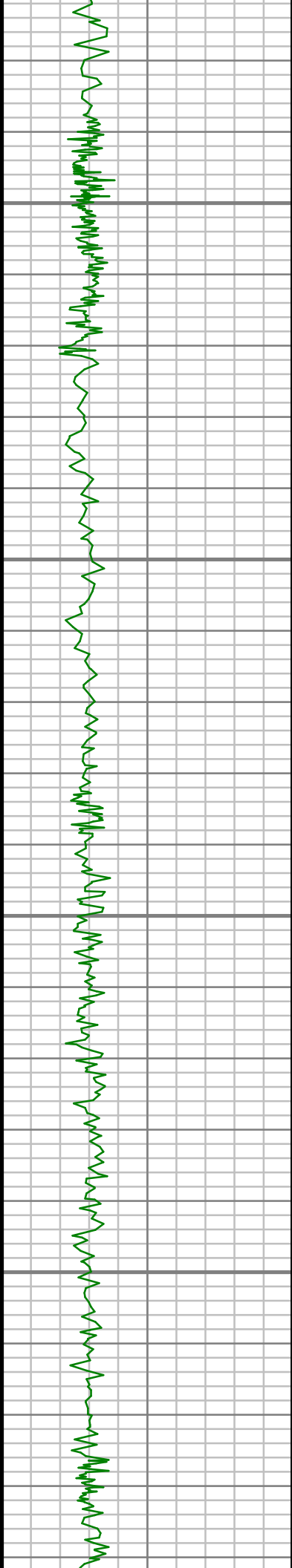
3750

3800

3850

3900



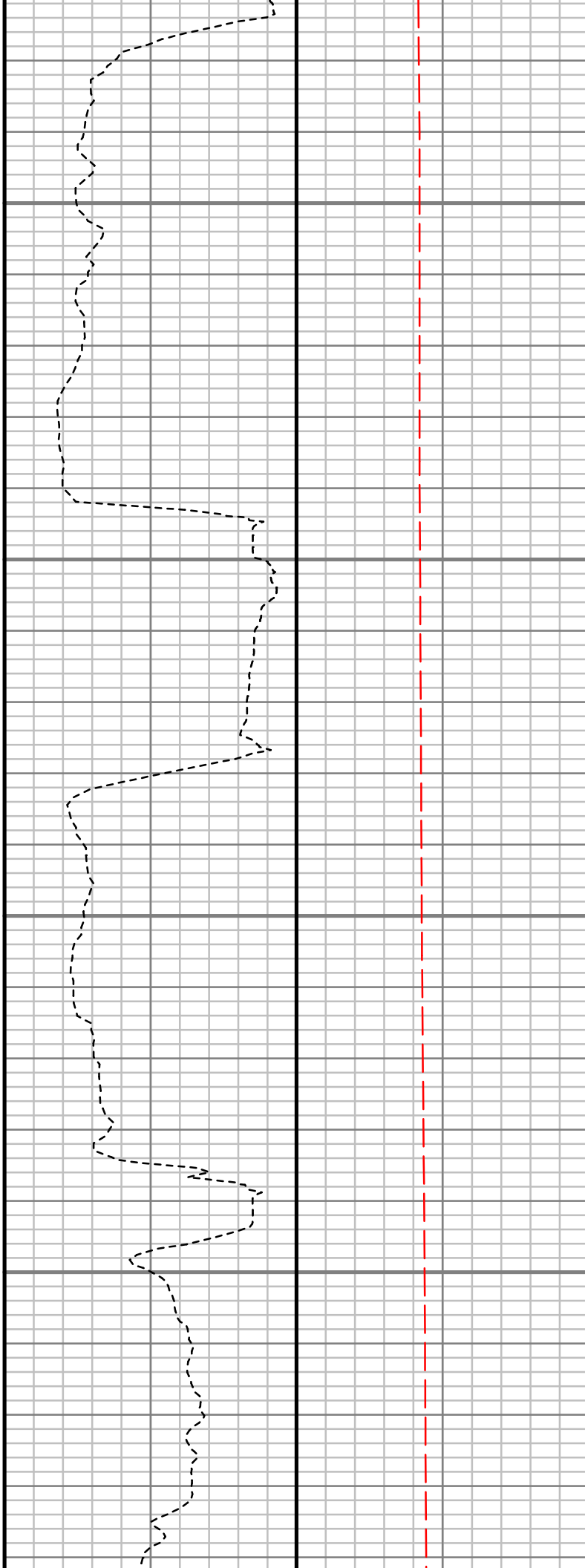


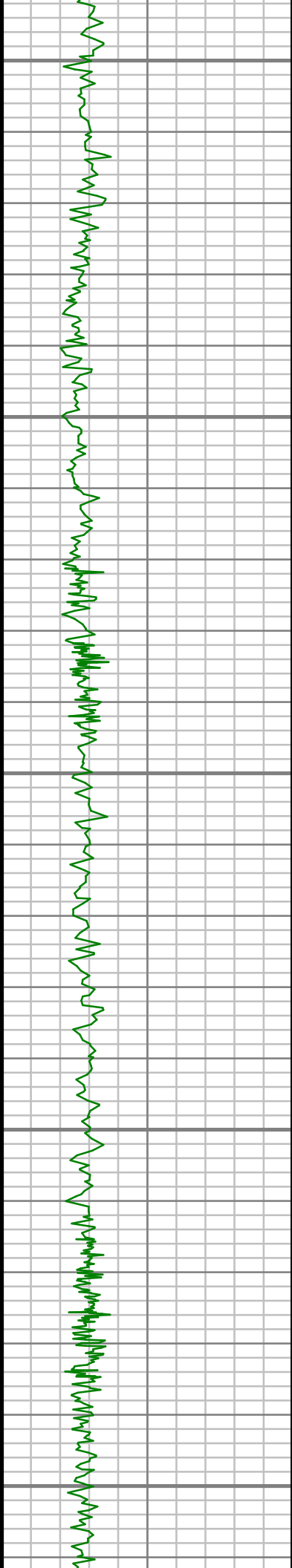
4150

4200

4250

4300





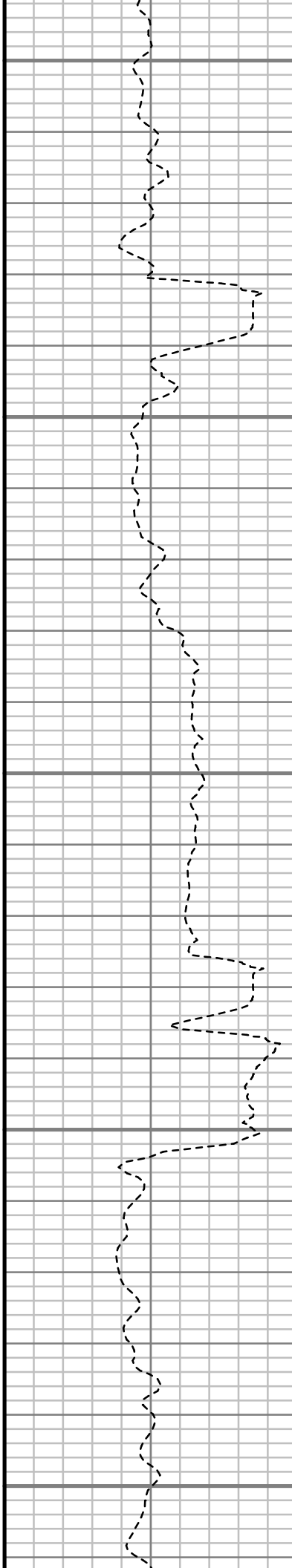
4350

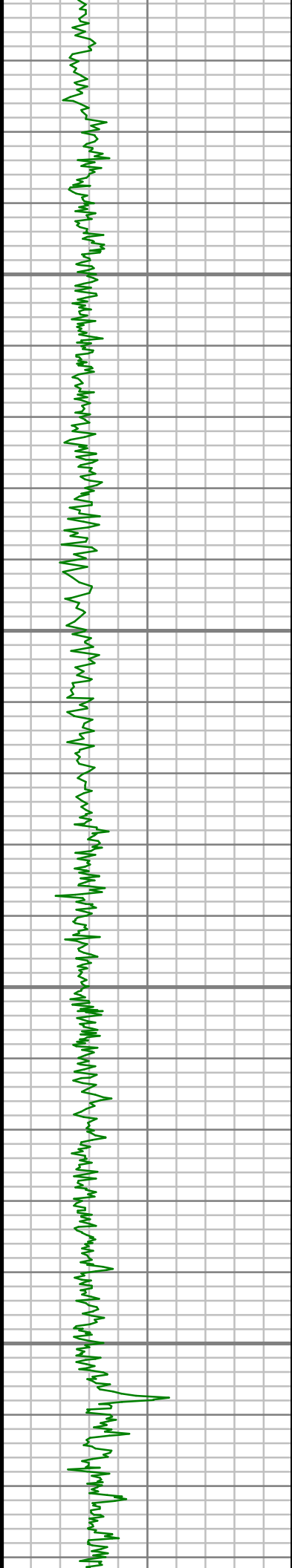
4400

4450

4500

4550



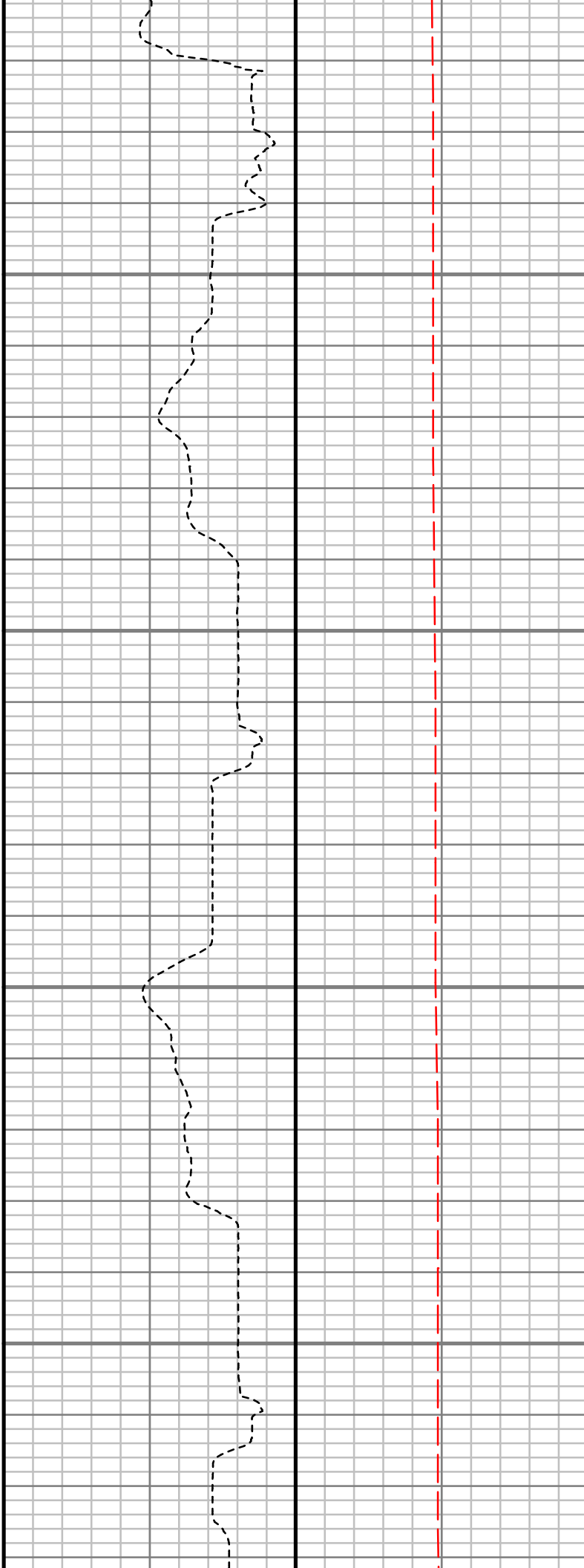


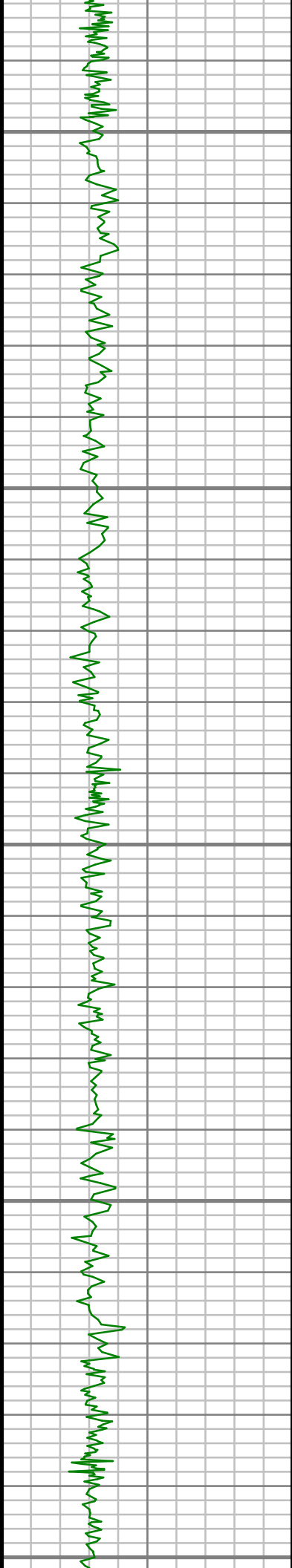
4600

4650

4700

4750





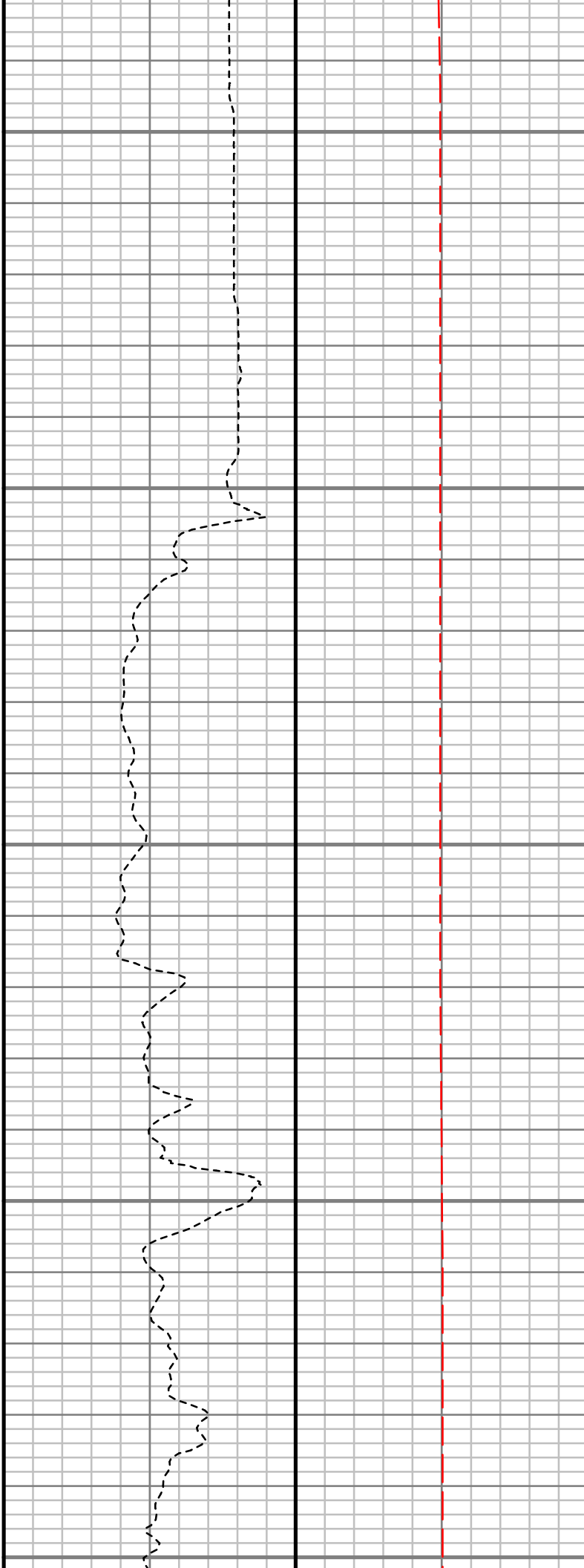
4800

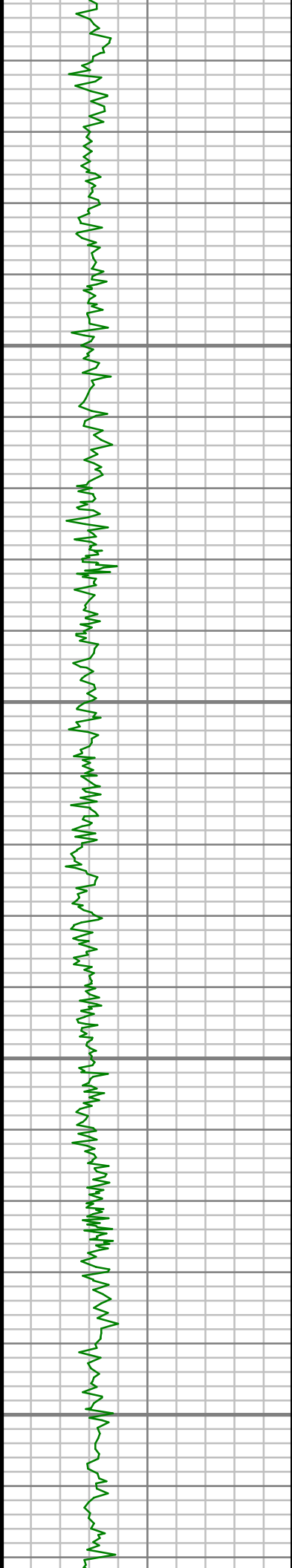
4850

4900

4950

5000



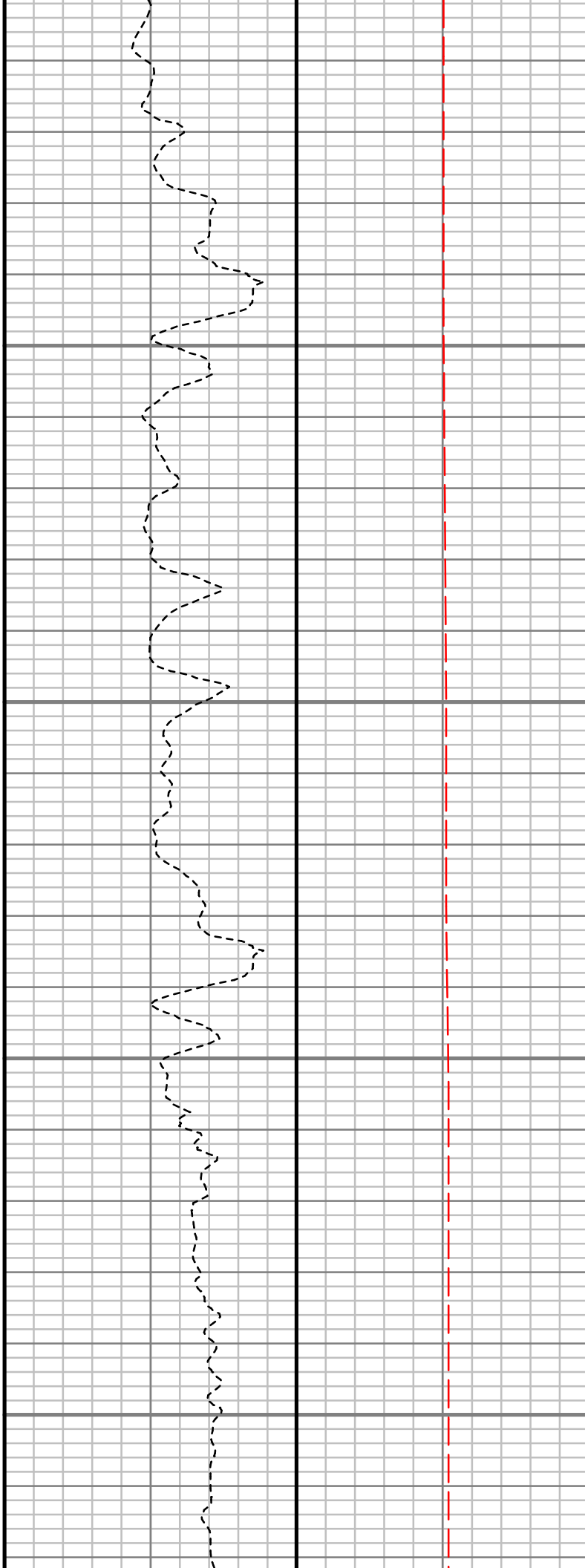


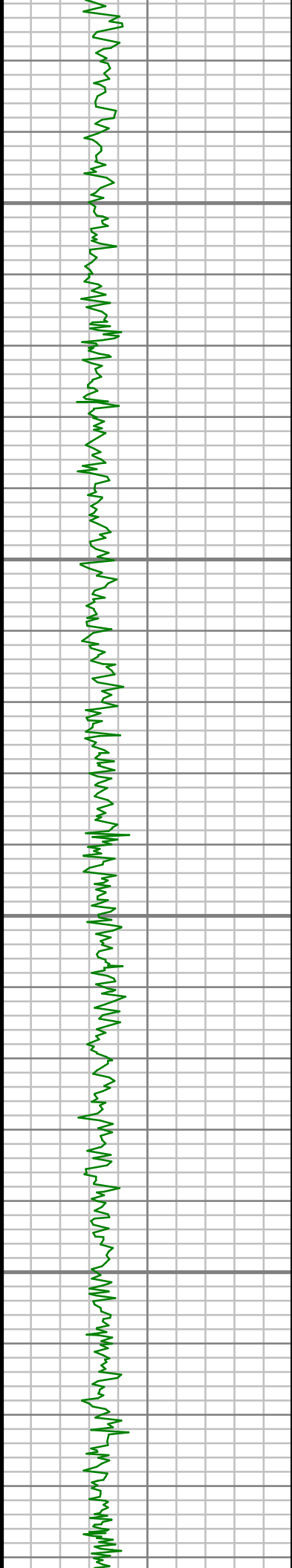
5050

5100

5150

5200



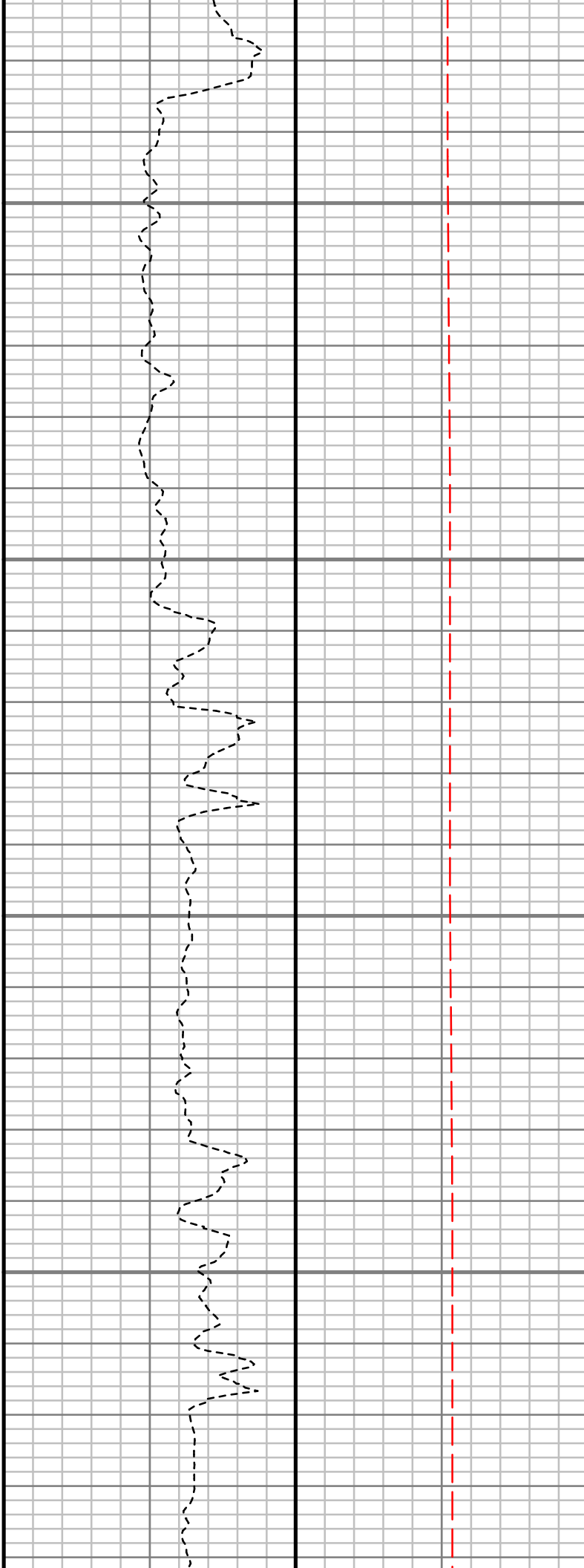


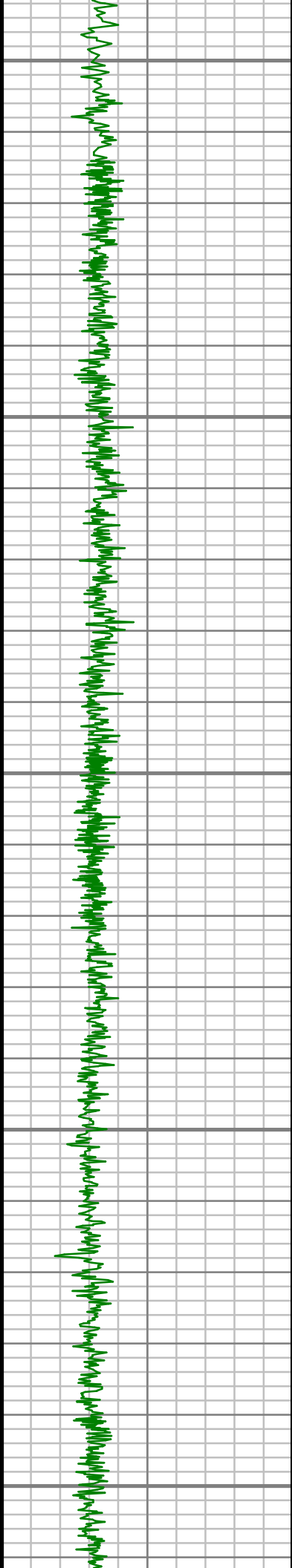
5250

5300

5350

5400





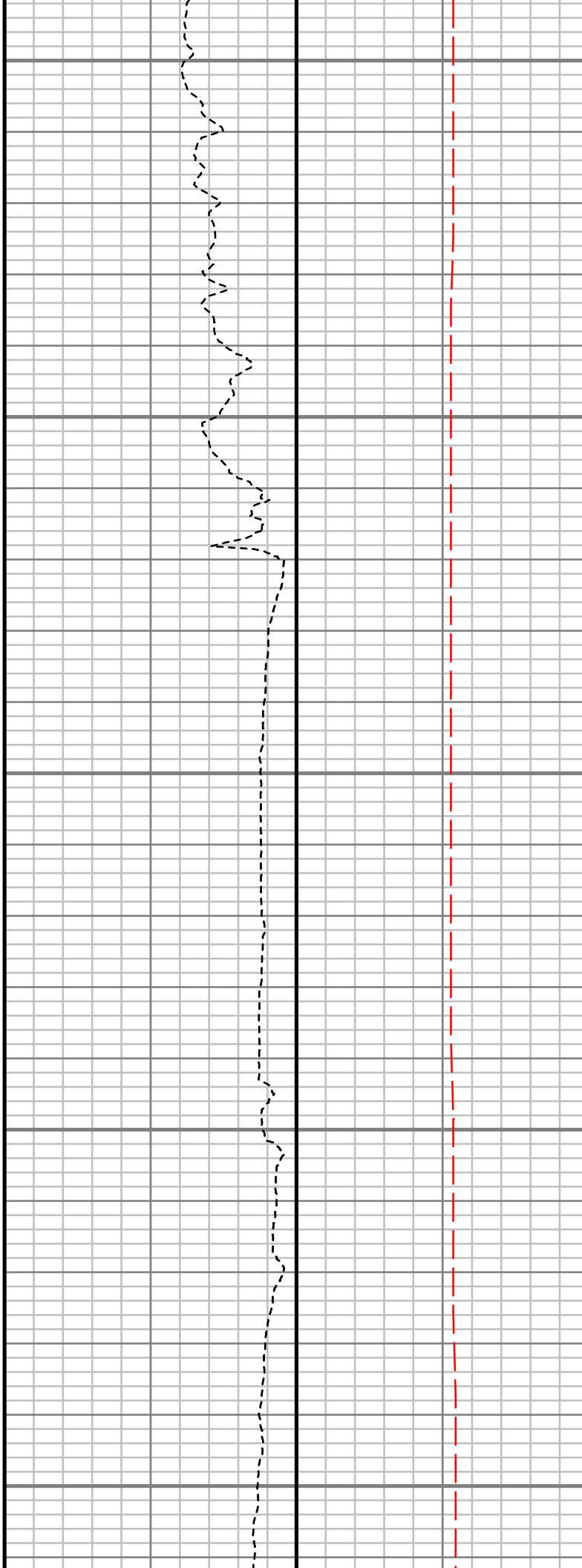
5450

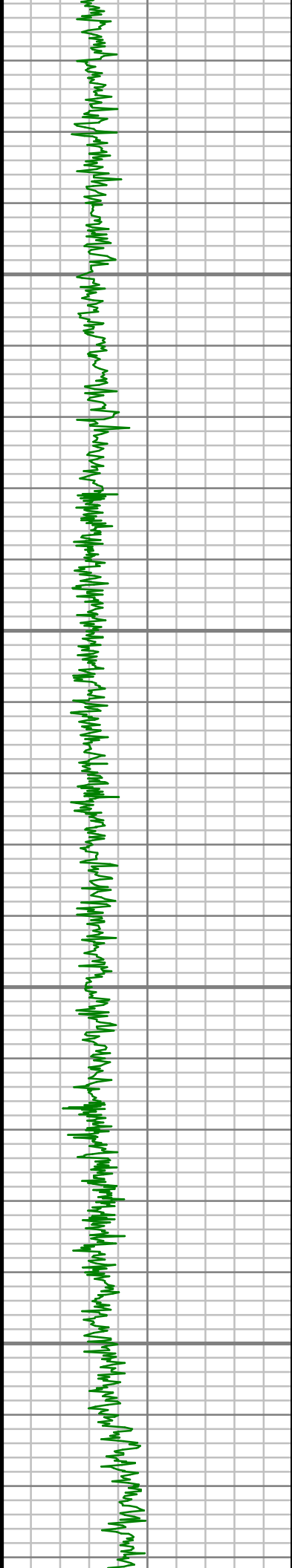
5500

5550

5600

5650





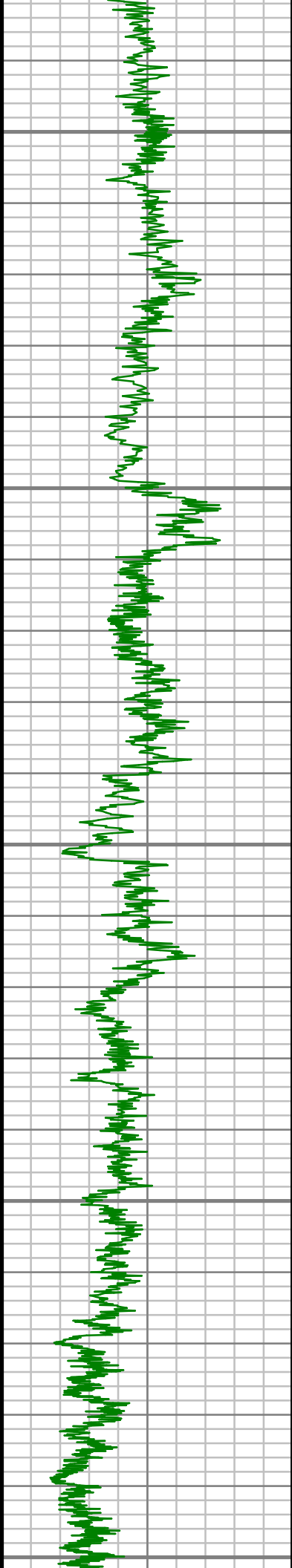
5700

5750

5800

5850





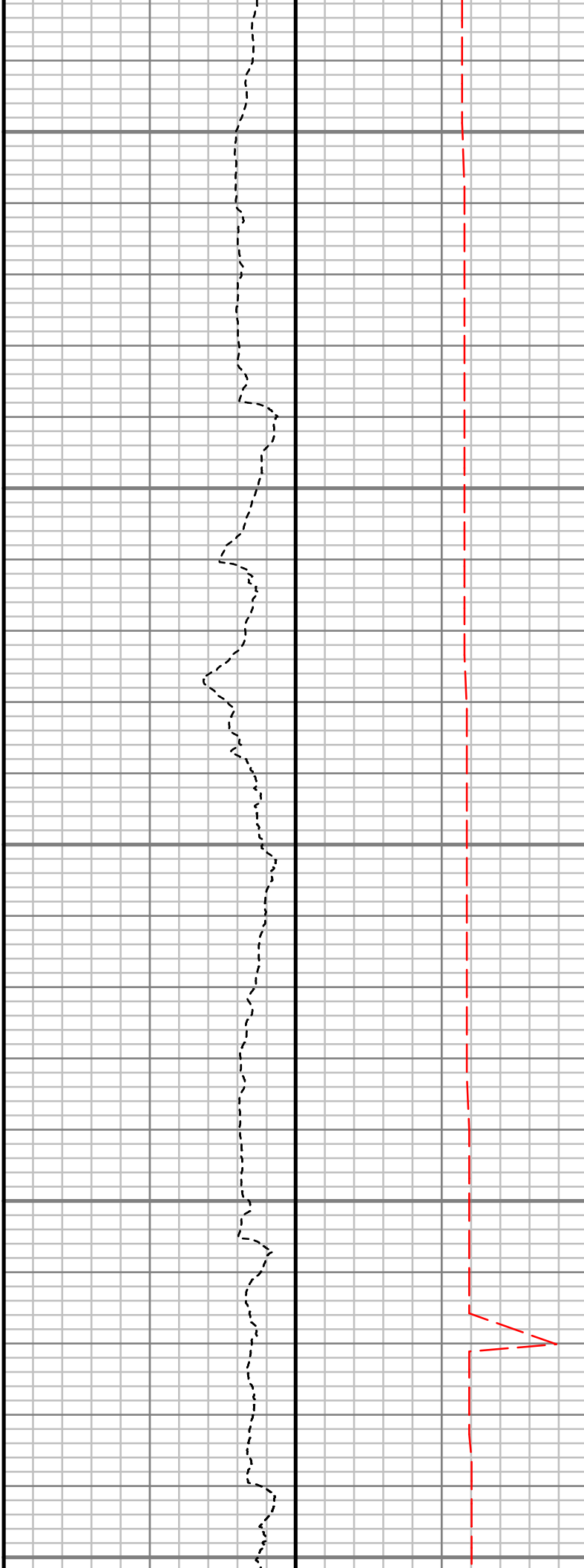
5900

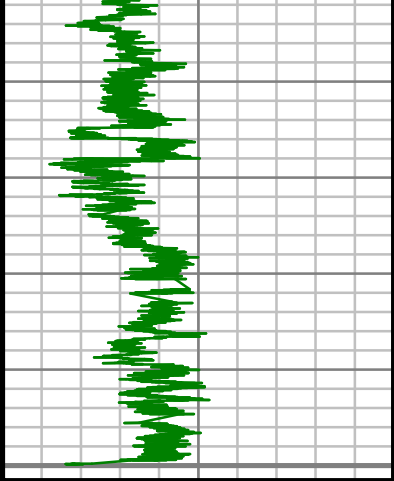
5950

6000

6050

6100





Gamma Ray (GR)		
0	Unit = aapi	300

6150

TRUE VERTICAL DEPTH
1:240 (ft)



Rate of Penetration (ROP)		
1000	Unit = ft/hr	0

Tool Temperature (T-TEMP)		
0	Unit = °F	300

Comments
