



Great Western Operating
Company, LLC
1801 Broadway, Suite 500
Denver, CO 80202

303.398.0302
866.742.1784 Fax
info@gwogco.com
www.gwogco.com

October 4, 2017

Colorado Oil and Gas Conservation Commission
1120 Lincoln Street, Suite 801
Denver, CO 80203

RE: Proposed Wellbore Spacing Unit
Raindance FD 20-242HNX
Niobrara New Drill
NENE Sec. 30, Township 6N, Range 67W
Weld County, Colorado

Dear Director Lepore,

Great Western Operating Company, LLC (Great Western) is planning to drill the above captioned well in accordance with the provisions of Colorado Oil and Gas Conservation Commission (COGCC) Rule 318A.e.

Great Western's proposed wellbore spacing unit consists of:

Township 6 North, Range 67 West (Weld County):
Section 19: E2SE
Section 20: S2

Total Acres: 397

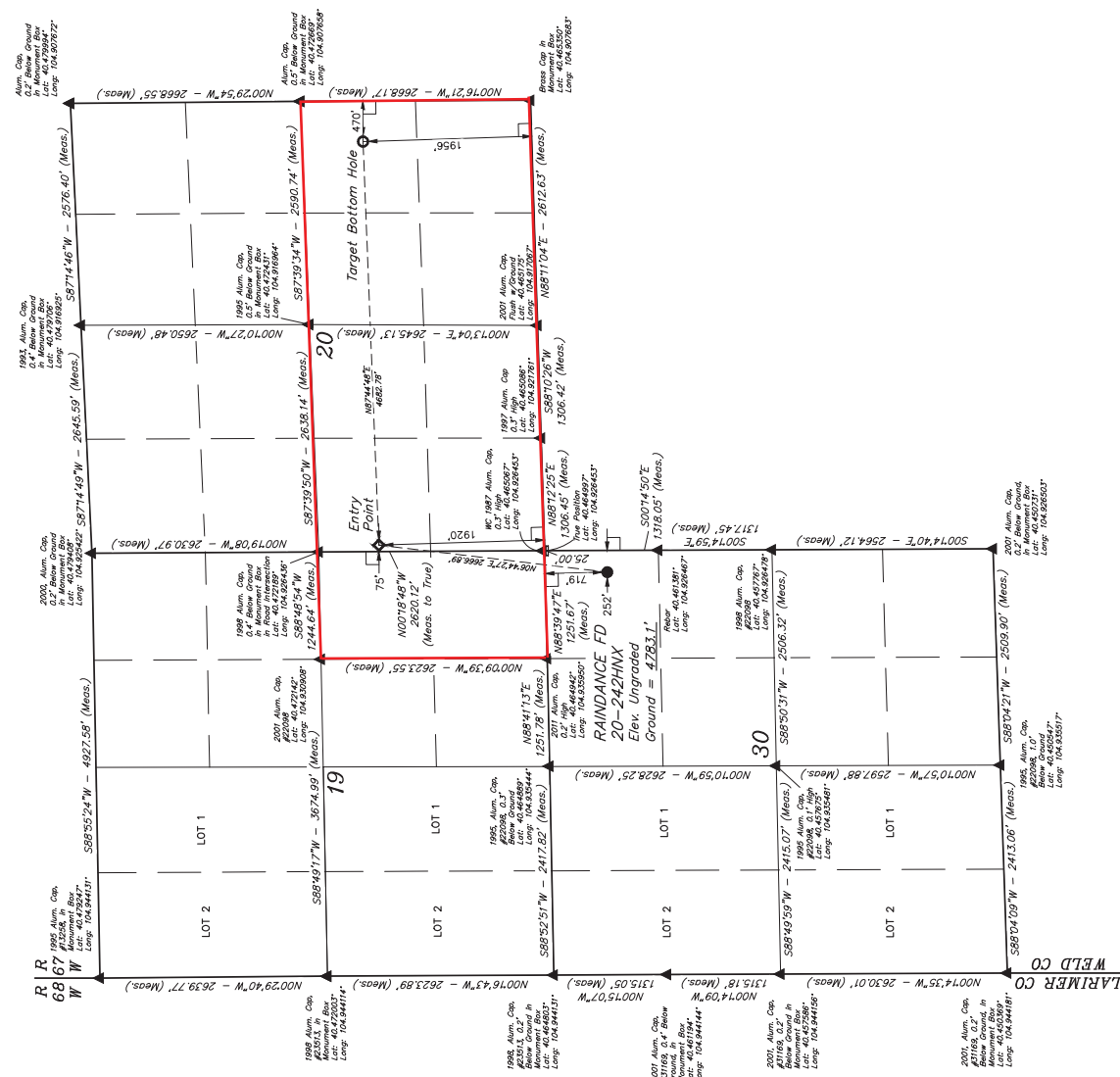
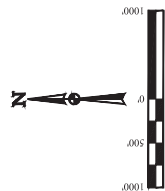
The 30 day notification time period has passed and we have not yet received any objections to such well locations or proposed spacing unit, therefore Great Western hereby requests the Director to approve the above mentioned well. Great Western respectfully requests the COGCC review the enclosed map illustrating the proposed wellbore spacing unit.

Respectfully,

Christi Ng
Senior Regulatory Analyst
Great Western Operating Company, LLC

GREAT WESTERN OPERATING COMPANY
 RANDANCE FD 20-242HN
 NE 1/4 NE 1/4, SECTION 30, T6N, R67W, 6th P.M.
 WELD COUNTY, COLORADO

BASIS OF BEARINGS
BASIS OF BEARINGS IS A G.P.S. OBSERVATION
BASIS OF ELEVATION
USGS COOPERATIVE BASE NETWORK CONTROL STATION,
DESIGNATION "VERMILYEA" ; NGDS DATA SHEET LISTS THE
NAVD 88 ELEVATION AS BEING 5026 FEET.



THIS IS TO CERTIFY THAT THE ABOVE
NOTES OF ACTUAL SURVIVORS MADE
AND THAT THE SAME ARE TRUE AN
KNOWLEDGE AND BELIEF.

REV: 3 10-26-16 K.B. (SHL, EP, TBH & NAME CHANGE)

JINTAH
 INTERNATIONAL & GROUP INCORPORATED
 UELS, LLC
 Corporate Office • 85 South 200 East
 Vernal, UT 84078 • (435) 789-1017

INSPECTED BY	CHAD MEIERS, J.C.	10-14-16	SCALE
DRAWN BY	K.B.	02-25-16	1" = 1000'

WELL LOCATION PLAT

[illegible]

= 90° SYMBOL
 = PROPOSED WELLHEAD.
 = TARGET BOTTOM HOLE.
 = ENTRY POINT.
 = SECTION CORNERS LOCATED. (NAD 83)
 = SECTION CORNERS RE-ESTABLISHED.

[illegible]