



Great Western Operating
Company, LLC
1801 Broadway, Suite 500
Denver, CO 80202

303.398.0302
866.742.1784 Fax
info@gwogco.com
www.gwogco.com

October 4, 2017

Colorado Oil and Gas Conservation Commission
1120 Lincoln Street, Suite 801
Denver, CO 80203

RE: Proposed Wellbore Spacing Unit
Raindance FD 20-239HC
Codell New Drill
NENE Sec. 30, Township 6N, Range 67W
Weld County, Colorado

Dear Director Lepore,

Great Western Operating Company, LLC (Great Western) is planning to drill the above captioned well in accordance with the provisions of Colorado Oil and Gas Conservation Commission (COGCC) Rule 318A.e.

Great Western's proposed wellbore spacing unit consists of:

Township 6 North, Range 67 West (Weld County):
Section 19: E2SE
Section 20: S2

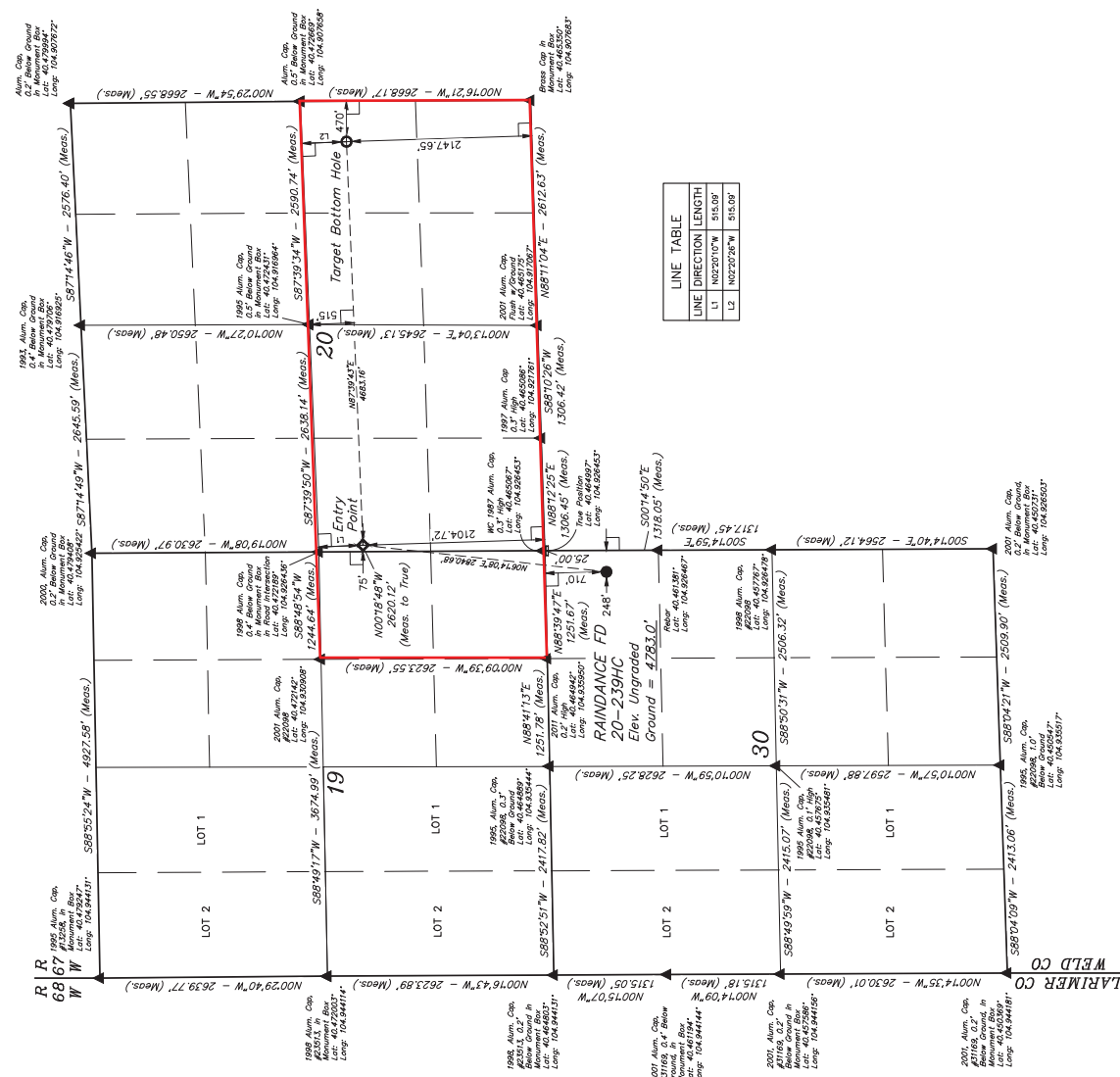
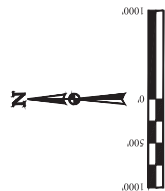
Total Acres: 397

The 30 day notification time period has passed and we have not yet received any objections to such well locations or proposed spacing unit, therefore Great Western hereby requests the Director to approve the above mentioned well. Great Western respectfully requests the COGCC review the enclosed map illustrating the proposed wellbore spacing unit.

Respectfully,

Christi Ng
Senior Regulatory Analyst
Great Western Operating Company, LLC

BASIS OF BEARINGS
BASIS OF BEARINGS IS A G.P.S. OBSERVATION
BASIS OF ELEVATION
USGS COOPERATIVE BASE NETWORK CONTROL STATION,
DESIGNATION "VERMILYEA" : NGDS DATA SHEET LISTS THE
NAVD 88 ELEVATION AS BEING 5026 FEET.



LINE TABLE		
LINE	DIRECTION	LENGTH
L1	N02°20'10"W	515.09'
L2	N02°20'26"W	515.09'

THIS IS TO CERTIFY THAT THE ABOVE
NOTES OF ACTUAL SURVEYS MADE
AND THAT THE SAME ARE TRUE AS
KNOWLEDGE AND BELIEF.

REV: 3 10-26-16 K.B. (SHL, EP, TBH & NAME CHANGE)



JUNTAH
Engineering & Construction Professionals

UELS, LLC
 Corporate Office: 1000 E. 300 East
 Vermilion, UT 84078 • (435) 785-0117

SURVEYED BY	CHAD MEIERS, J.C.	10/14/16	SCALE
DRAWN BY	K.B.	02-25-16	1" = 1000'

WELL LOCATION PLAT

LEGEND:

- = 90° SYMBOL
- = PROPOSED WELLHEAD.
- = TARGET BOTTOM HOLE.
- ⬢ = ENTRY POINT.
- ⬢ = SECTION CORNERS LOCATED. (NAD 83.)
- ⬢ = SECTION CORNERS RE-ESTABLISHED.

	NAD 83 (SURFACE LOCATION)	NAD 83 (ENTRY POINT)	NAD 83 (TARGET BOTTOM HOLE)
NAD 27 (SURFACE LOCATION)	LATITUDE = 40° 25' 43.66" (40.43099)	LATITUDE = 40° 25' 43.71" (40.43098)	LATITUDE = 40° 28' 37.37" (40.47721)
	LONGITUDE = 40° 55' 34.66" (40.92750)	LONGITUDE = 40° 55' 34.71" (40.92669)	LONGITUDE = 40° 58' 33.67" (40.96953)
NAD 27 (SURFACE LOCATION)	LATITUDE = 40° 27' 47.06" (40.46086)	NAD 27 (ENTRY POINT)	NAD 27 (TARGET BOTTOM HOLE)
	LATITUDE = 40° 27' 47.06" (40.46086)	LATITUDE = 40° 28' 13.85" (40.47580)	LATITUDE = 40° 28' 16.62" (40.47721)

LEGEND:

- = 90° SYMBOL
- = PROPOSED WELLHEAD.
- = TARGET BOTTOM HOLE.
- ⬤ = ENTRY POINT.
- ▲ = SECTION CORNERS LOCATED. (NAD 83)
- ⬢ = SECTION CORNERS RE-ESTABLISHED.