



Great Western Operating
Company, LLC
1801 Broadway, Suite 500
Denver, CO 80202

303.398.0302
866.742.1784 Fax
info@gwogco.com
www.gwogco.com

October 4, 2017

Colorado Oil and Gas Conservation Commission
1120 Lincoln Street, Suite 801
Denver, CO 80203

RE: Proposed Wellbore Spacing Unit
Raindance FD 20-362HNX
Niobrara New Drill
NENE Sec. 30, Township 6N, Range 67W
Weld County, Colorado

Dear Director Lepore,

Great Western Operating Company, LLC (Great Western) is planning to drill the above captioned well in accordance with the provisions of Colorado Oil and Gas Conservation Commission (COGCC) Rule 318A.e.

Great Western's proposed wellbore spacing unit consists of:

Township 6 North, Range 67 West (Weld County):
Section 19: E2SE
Section 20: S2

Total Acres: 397

The 30 day notification time period has passed and we have not yet received any objections to such well locations or proposed spacing unit, therefore Great Western hereby requests the Director to approve the above mentioned well. Great Western respectfully requests the COGCC review the enclosed map illustrating the proposed wellbore spacing unit.

Respectfully,

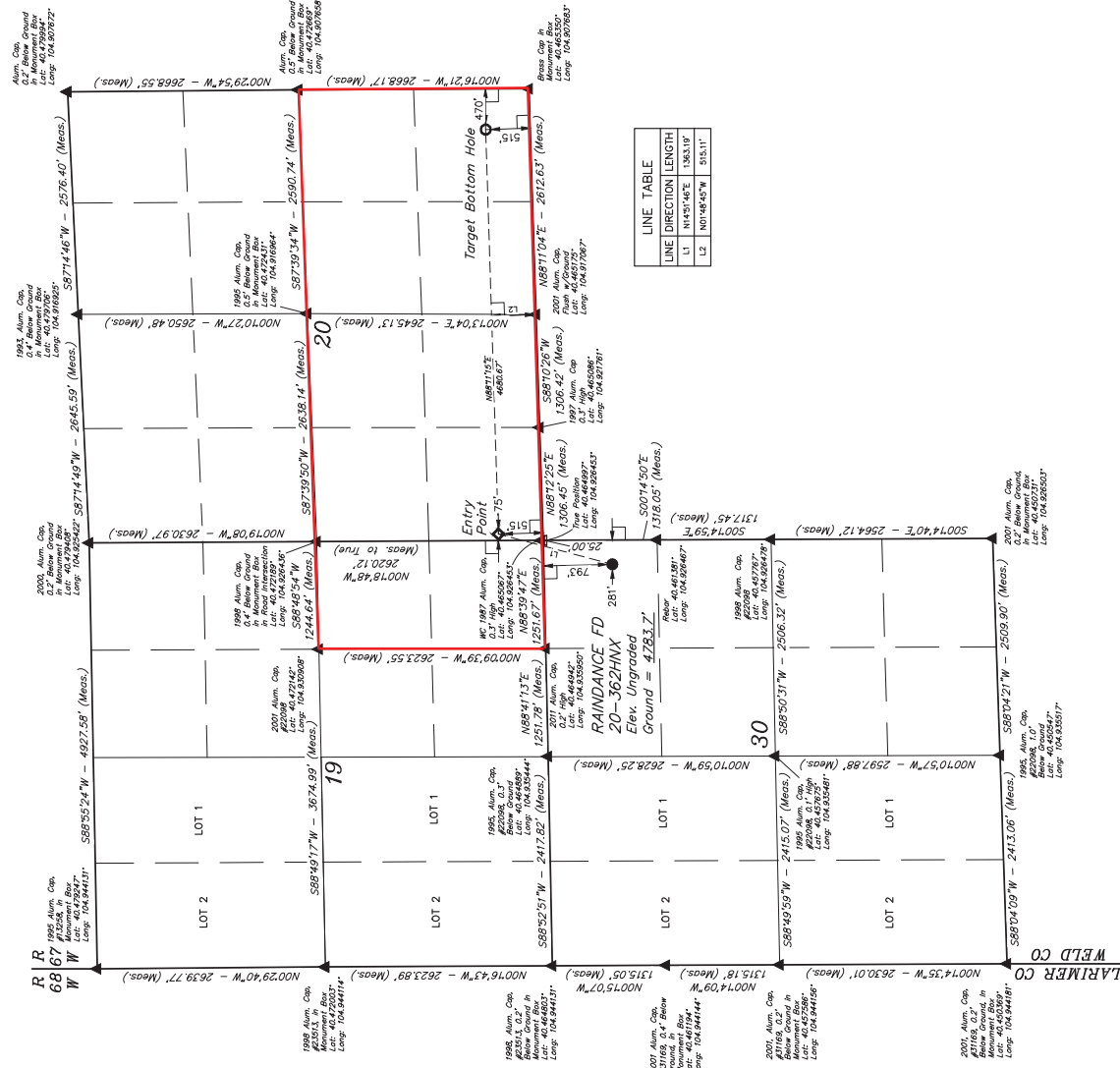
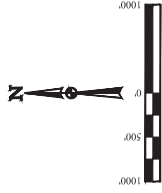
Christi Ng
Senior Regulatory Analyst
Great Western Operating Company, LLC

GREAT WESTERN OPERATING COMPANY
 RANDANCE FD 20-362HN
 NE 1/4 NE 1/4, SECTION 30, T6N, R67W, 6th P.M.
 WELD COUNTY, COLORADO

T6N, R67W, 6th P.M.

BASIS OF BEARINGS
BASIS OF BEARINGS IS A G.P.S. OBSERVATION

BASIS OF ELEVATION
USGS COOPERATIVE BASE NETWORK CONTROL STATION,
DESIGNATION "VERMILYEA". NGDS DATA SHEET LISTS THE
NAVD 88 ELEVATION AS BEING 5026 FEET.



LINE TABLE		
LINE	DIRECTION	LENGTH
L1	N14°51'46"E	1363.19'
L2	N01°48'45"W	515.11'

THIS IS TO CERTIFY THAT THE ABOVE
NOTES OF ACTUAL SURVEYS MADE
AND THAT THE SAME ARE TRUE AND
KNOWLEDGE AND BELIEF.

REV: 3 10-26-16 K.B. (SHL, EP, TBH & NAMECHANGE)

U.S. INTAH
UELS, LLC
Corporate Office • 85 South 200 East
Vernal, UT 84078 • (435) 789-1017

DESIGNED BY	CHAD MEIERS, J.C.	10-14-16	SCALE
DRAWN BY	K.B.	02-25-16	1" = 1000'

NAD83 (SURFACE LOCATION)		NAD83 (ENTRY POINT)		NAD83 (TARGET TUNNEL HOLE)		PDOP = 1.5
LATITUDE = 40°27'46.11" (40.462808)	LATITUDE = 40°27'50.10" (40.466417)	LATITUDE = 40°25'00.33" (40.416671)	LATITUDE = 40°25'00.33" (40.416671)	LATITUDE = 40°25'00.33" (40.416671)	LATITUDE = 40°25'00.33" (40.416671)	
LONGITUDE = 40°55'38.90" (40.927469)	LONGITUDE = 40°55'34.25" (40.926181)	LONGITUDE = 40°55'34.25" (40.926181)	LONGITUDE = 40°55'34.25" (40.926181)	LONGITUDE = 40°55'34.25" (40.926181)	LONGITUDE = 40°55'34.25" (40.926181)	
NAD27 (SURFACE LOCATION)	NAD27 (ENTRY POINT)	NAD27 (TARGET TUNNEL HOLE)	NAD27 (TARGET TUNNEL HOLE)	NAD27 (TARGET TUNNEL HOLE)	NAD27 (TARGET TUNNEL HOLE)	
LATITUDE = 40°27'46.11" (40.462805)	LATITUDE = 40°27'50.17" (40.466416)	LATITUDE = 40°25'00.37" (40.416675)	LATITUDE = 40°25'00.37" (40.416675)	LATITUDE = 40°25'00.37" (40.416675)	LATITUDE = 40°25'00.37" (40.416675)	
LONGITUDE = 40°55'36.98" (40.926939)	LONGITUDE = 40°55'32.34" (40.925650)	LONGITUDE = 40°55'32.34" (40.925650)	LONGITUDE = 40°55'32.34" (40.925650)	LONGITUDE = 40°55'32.34" (40.925650)	LONGITUDE = 40°55'32.34" (40.925650)	

 = 90° SYMBOL
 = PROPOSED
 = TARGET BOUNDARY
 = ENTRY POINT
 = SECTION CORNER
 = SECTION CORNER (Noted)