



Great Western Operating  
Company, LLC  
1801 Broadway, Suite 500  
Denver, CO 80202

303.398.0302  
866.742.1784 Fax  
info@gwogco.com  
www.gwogco.com

---

October 4, 2017

Colorado Oil and Gas Conservation Commission  
1120 Lincoln Street, Suite 801  
Denver, CO 80203

**RE: Proposed Wellbore Spacing Unit**  
Raindance FD 20-282HC  
Codell New Drill  
NENE Sec. 30, Township 6N, Range 67W  
Weld County, Colorado

Dear Director Lepore,

Great Western Operating Company, LLC (Great Western) is planning to drill the above captioned well in accordance with the provisions of Colorado Oil and Gas Conservation Commission (COGCC) Rule 318A.e.

Great Western's proposed wellbore spacing unit consists of:

Township 6 North, Range 67 West (Weld County):  
Section 19: E2SE  
Section 20: S2

Total Acres: 397

The 30 day notification time period has passed and we have not yet received any objections to such well locations or proposed spacing unit, therefore Great Western hereby requests the Director to approve the above mentioned well. Great Western respectfully requests the COGCC review the enclosed map illustrating the proposed wellbore spacing unit.

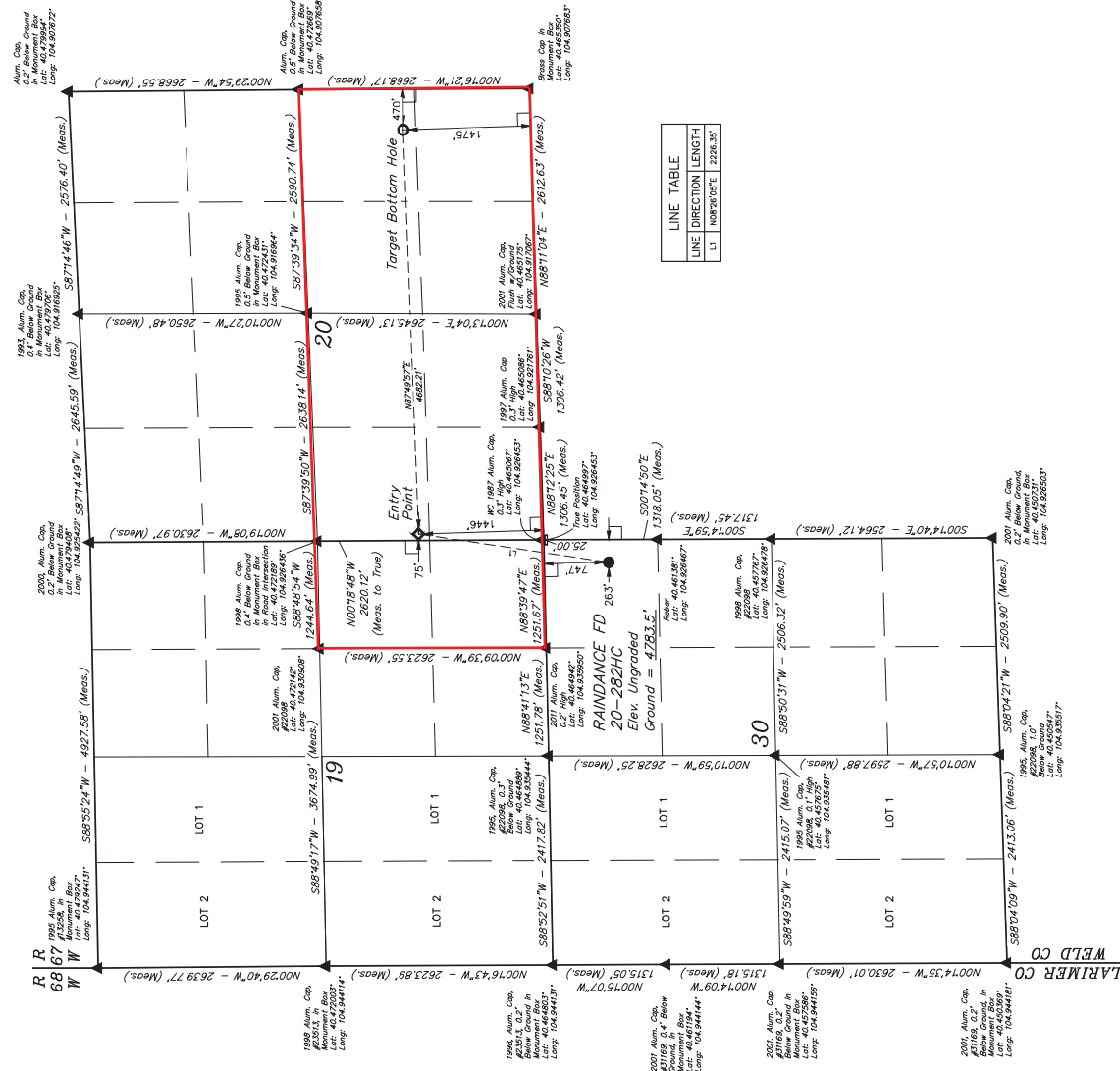
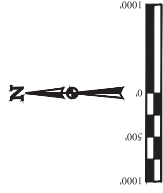
Respectfully,

**Christi Ng**  
Senior Regulatory Analyst  
Great Western Operating Company, LLC

**GREAT WESTERN OPERATING COMPANY**  
RAINDANCE FD 20-282HC  
NE 1/4 NE 1/4, SECTION 30, T6N, R67W, 6th P.M.  
WELD COUNTY, COLORADO

**BASIS OF BEARINGS**  
BASIS OF BEARINGS IS A G.P.S. OBSERVATION  
**BASIS OF ELEVATION**  
USGS COOPERATIVE BASE NETWORK CONTROL STATION,  
DESIGNATION "VERMILYEA" : NGDS DATA SHEET LISTS THE  
NAVD 88 ELEVATION AS BEING 5026 FEET.

T6N, R67W, 6th P.M.



LINE TABLE		
LINE	DIRECTION	LENGTH
L1	N08°26'05"E	2226.35'

THIS IS TO CERTIFY THAT THE ABOVE  
NOTES OF ACTUAL SURVEYS MADE  
AND THAT THE SAME ARE TRUE AND  
KNOWLEDGE AND BELIEF.

REV: 3 10-26-16 K B (SHL EP TBH &amp; NAME CHANGE)



**VELS, LLC**  
Corporate Office • 85 South 200 East

ENDOP = 15

NAD 83 (SURFACE LOCATION)	NAD 83 (ENTRY POINT)	NAD 83 (TARGET BOTTOM HOLE)
LATITUDE = 40°27'46.57" (04.462936)	LATITUDE = 40°28'08.30" (04.468972)	LATITUDE = 40°28'09.72" (04.469367)
LONGITUDE = 104°55'38.65" (104.927403)	LONGITUDE = 104°55'34.31" (104.926175)	LONGITUDE = 104°54'33.60" (104.909158)
NAD 27 (SURFACE LOCATION)	NAD 27 (ENTRY POINT)	NAD 27 (TARGET BOTTOM HOLE)
LATITUDE = 40°27'46.63" (04.462953)	LATITUDE = 40°28'08.33" (04.468992)	LATITUDE = 40°28'09.78" (04.469383)
LONGITUDE = 104°55'36.75" (104.926875)	LONGITUDE = 104°55'32.32" (104.925644)	LONGITUDE = 104°54'31.70" (104.908831)

## LEGEND:

LEGEND.

□ = 90° SYMBOL

● = PROPOSED WELLHEAD.  
○ = TARGET BOTTOM HOLE.

- = TARGET BOTTOM HOLE;
- ◇ = ENTRY POINT.

= SECTION CORNERS LOCATED. (NAD 83)

$\Delta$  = SECTION CORNERS RE-ESTABLISHED.