



Great Western Operating
Company, LLC
1801 Broadway, Suite 500
Denver, CO 80202

303.398.0302
866.742.1784 Fax
info@gwogco.com
www.gwogco.com

October 4, 2017

Colorado Oil and Gas Conservation Commission
1120 Lincoln Street, Suite 801
Denver, CO 80203

RE: Proposed Wellbore Spacing Unit
Raindance FD 20-242HN
Niobrara New Drill
NENE Sec. 30, Township 6N, Range 67W
Weld County, Colorado

Dear Director Lepore,

Great Western Operating Company, LLC (Great Western) is planning to drill the above captioned well in accordance with the provisions of Colorado Oil and Gas Conservation Commission (COGCC) Rule 318A.e.

Great Western's proposed wellbore spacing unit consists of:

Township 6 North, Range 67 West (Weld County):
Section 19: E2SE
Section 20: S2

Total Acres: 397

The 30 day notification time period has passed and we have not yet received any objections to such well locations or proposed spacing unit, therefore Great Western hereby requests the Director to approve the above mentioned well. Great Western respectfully requests the COGCC review the enclosed map illustrating the proposed wellbore spacing unit.

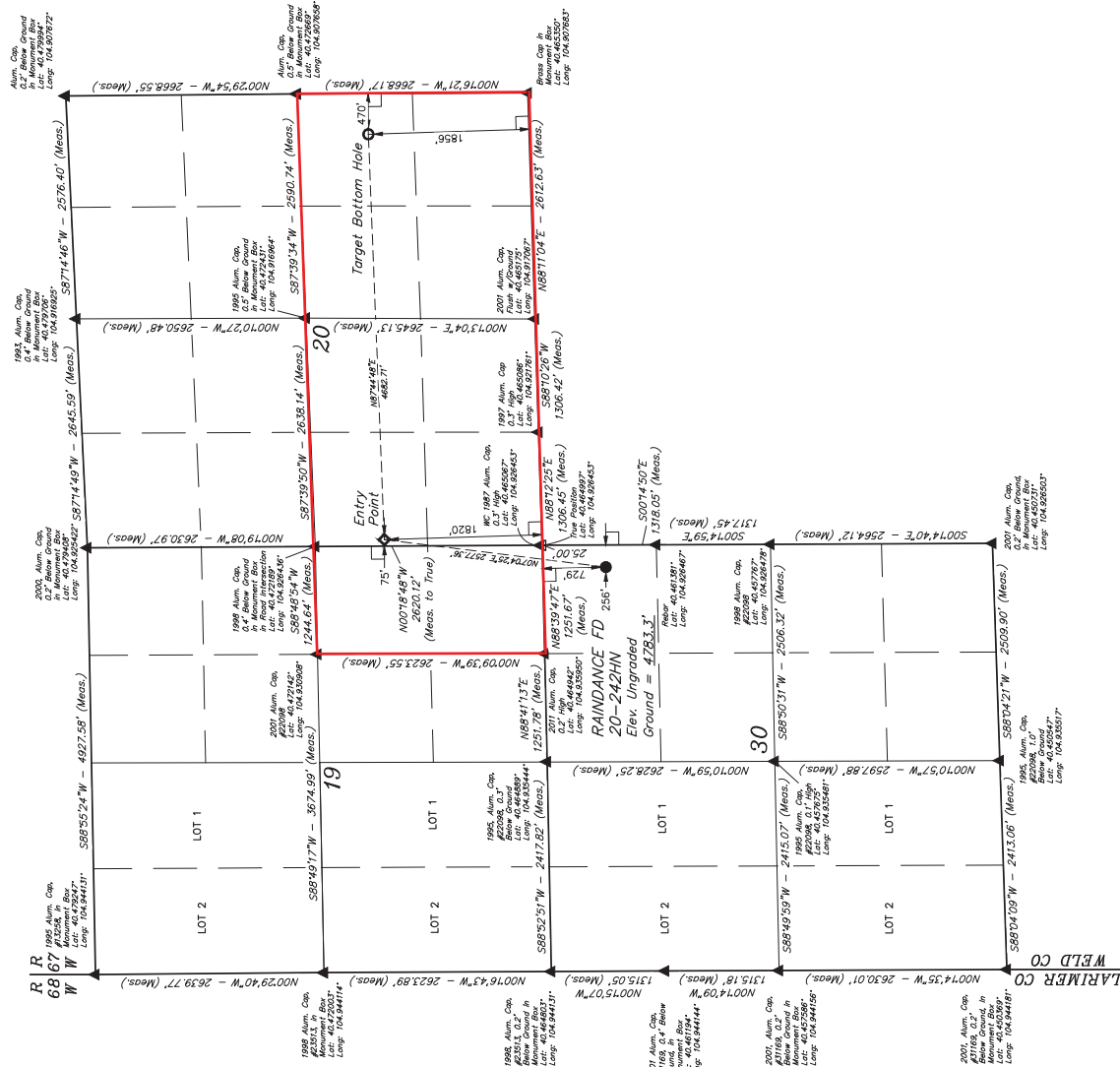
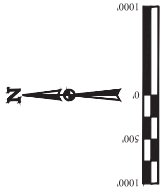
Respectfully,

Christi Ng
Senior Regulatory Analyst
Great Western Operating Company, LLC

T6N, R67W, 6th P.M.

GREAT WESTERN OPERATING COMPANY
RAINANCE FD 20-242HN
NE 1/4 NE 1/4, SECTION 30, T6N, R67W, 6th P.M.
WELD COUNTY, COLORADO

UNITED STATES DEPARTMENT OF THE INTERIOR
BUREAU OF LAND SURVEY
BASIS OF BEARINGS AND DISTANCES
BASIS OF ELEVATION
USGS COOPERATIVE BASE NETWORK CONTROL STATION
DESIGNATION "VERMILYEA", NGS DATA SHEET LISTS THE
NAD 83 ELEVATION AS BEING 5629 FEET.



LEGEND:

- 1" = 90' SYMBOL
- PROPOSED WELLSHEAD
- TARGET BOTTOM HOLE
- SECTION CORNERS LOCATED (NAD 83)
- SECTION CORNERS RE-ESTABLISHED (Not Set on Ground) (NAD 83)

PROPOSED = 1.3	
NAD 83 SURFACE LOCATION	NAD 83 ENTRY POINT
UTM ZONE 18Q UTM EASTING 650000	UTM ZONE 18Q UTM EASTING 650000
LONGITUDE = 104°53'56.5" W (104.902731)	LONGITUDE = 104°53'56.5" W (104.902731)
NAD 27 (TARGET BOTTOM HOLE)	NAD 27 (TARGET BOTTOM HOLE)
UTM ZONE 18Q UTM EASTING 650000	UTM ZONE 18Q UTM EASTING 650000
LONGITUDE = 104°53'56.5" W (104.902731)	LONGITUDE = 104°53'56.5" W (104.902731)
LATITUDE = 40°28'13.5" N (40.470317)	LATITUDE = 40°28'13.5" N (40.470317)
UTM ZONE 18Q UTM NORTHING 5250000	UTM ZONE 18Q UTM NORTHING 5250000
LONGITUDE = 104°53'56.5" W (104.902731)	LONGITUDE = 104°53'56.5" W (104.902731)

UNITAH

Surveying & Mapping

REV: 3

10-26-16

K.B.

CSH: EP: BHI & NAME CHANGE

CERTIFIED AND REGISTERED

Professional Land Surveyor

STATE OF COLORADO

16

THIS IS TO CERTIFY THAT THE ABOVE SURVEY WAS MADE IN ACCORDANCE WITH THE RULES AND REGULATIONS OF THE BOARD OF LAND SURVEYING AND THAT THE SAME ARE TRUE AND CORRECT TO THE BEST OF MY KNOWLEDGE AND BELIEF.

UNITAH LLC

Corporate Office: 435 South 200 East

Vernal, UT 84078 • (435) 798-1017

DRAWN BY

CHAD MEHRES, L.C.

10/11/16

SCALE

1" = 100'

WELL LOCATION PLAT