

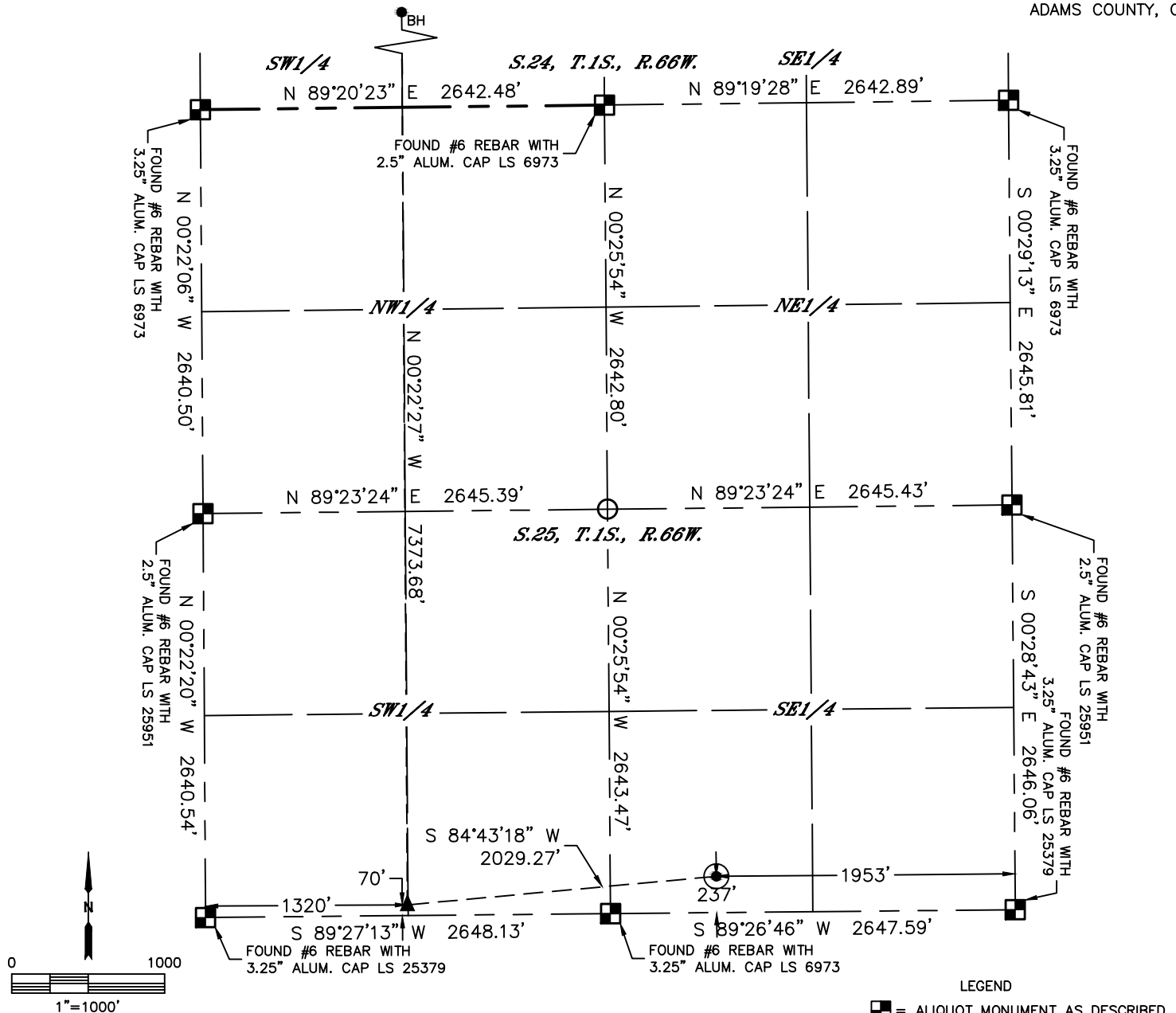


Lat40°, Inc. 6250 W. 10th Street, Unit 2, Greeley, CO 970-515-5294

# WELL LOCATION CERTIFICATE

ALMA 1S-66-2524-15NH

SECTION: 25  
TOWNSHIP: 1S  
RANGE: 66W  
6TH. P.M.  
ADAMS COUNTY, CO



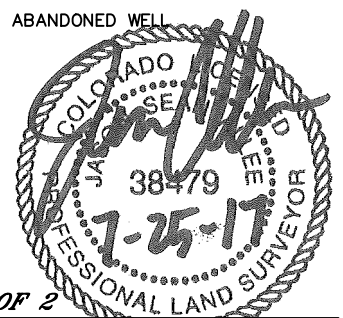
CLIENT: EXTRACTION OIL & GAS						LANDMAN: ALYSSA ANDREWS			
INSTRUMENT OPERATOR: DAVID BRANDON						SURVEY DATE: 7/14/17		SURFACE USE: RANGELAND	
SHL FOOTAGE			SHL LAT °		SHL LONG °	SHL PDOP	SHL ELEV (FT.)	SHL 1/4/1/4	SHL S-T-R
237	FSL	1953	FEL	39.92950	-104.72155	2.4	5177	SWSE	25-1S-66

BHL FOOTAGE				BHL LAT °	BHL LONG °	BHL S-T-R	EP LAT °	EP LONG °	EP S-T-R
1320	FWL	2160	FSL	39.94927	-104.72870	24-1S-66	39.92903	-104.72876	25-1S-66

NEAREST CULTURAL ITEMS	
BUILDING	±1655' NE
BUILDING UNIT	±1655' NE
HIGH OCCUPANCY BUILDING UNIT	5280'+
DESIGNATED OUTSIDE ACTIVITY AREA	5280'+
PUBLIC ROAD (EAST 128TH AVENUE)	±226' S
ABOVE GROUND UTILITY	±200' S
RAILROAD	5280'+
PROPERTY LINE	±197' S

NOTE:  
1) Bearings shown are Grid Bearings of the Colorado State Plane Coordinate System, North Zone, North American Datum 1983. The lineal dimensions as contained herein are based upon the "U.S. Survey Foot."  
2) Distances to section lines measured at 90 degrees from said section lines.  
3) Ground elevations are based on an observed GPS elevation (NAVD 1988 DATUM).  
4) Latitude and Longitude shown are (NAD 83 DATUM).  
5) IMPROVEMENTS: See LOCATION DRAWING for all visible improvements within 500' of oil and gas location.  
6) This map does not represent a boundary survey.

- LEGEND
- = ALIQUOT MONUMENT AS DESCRIBED
  - = CALCULATED POSITION
  - = SURFACE HOLE LOCATION (SHL)
  - ▲ = ENTRY POINT LOCATION (EP)
  - BH = BOTTOM HOLE LOCATION (BHL)
  - ⊕ = EXISTING WELL
  - ⊙ = ABANDONED WELL



**SHEET 1 OF 2**  
Jason S. Allee—On behalf of Lat40, Inc.  
Colorado Licensed Professional Land Surveyor No. 38479  
DATE: 7/19/2017  
PROJECT#: 2017086

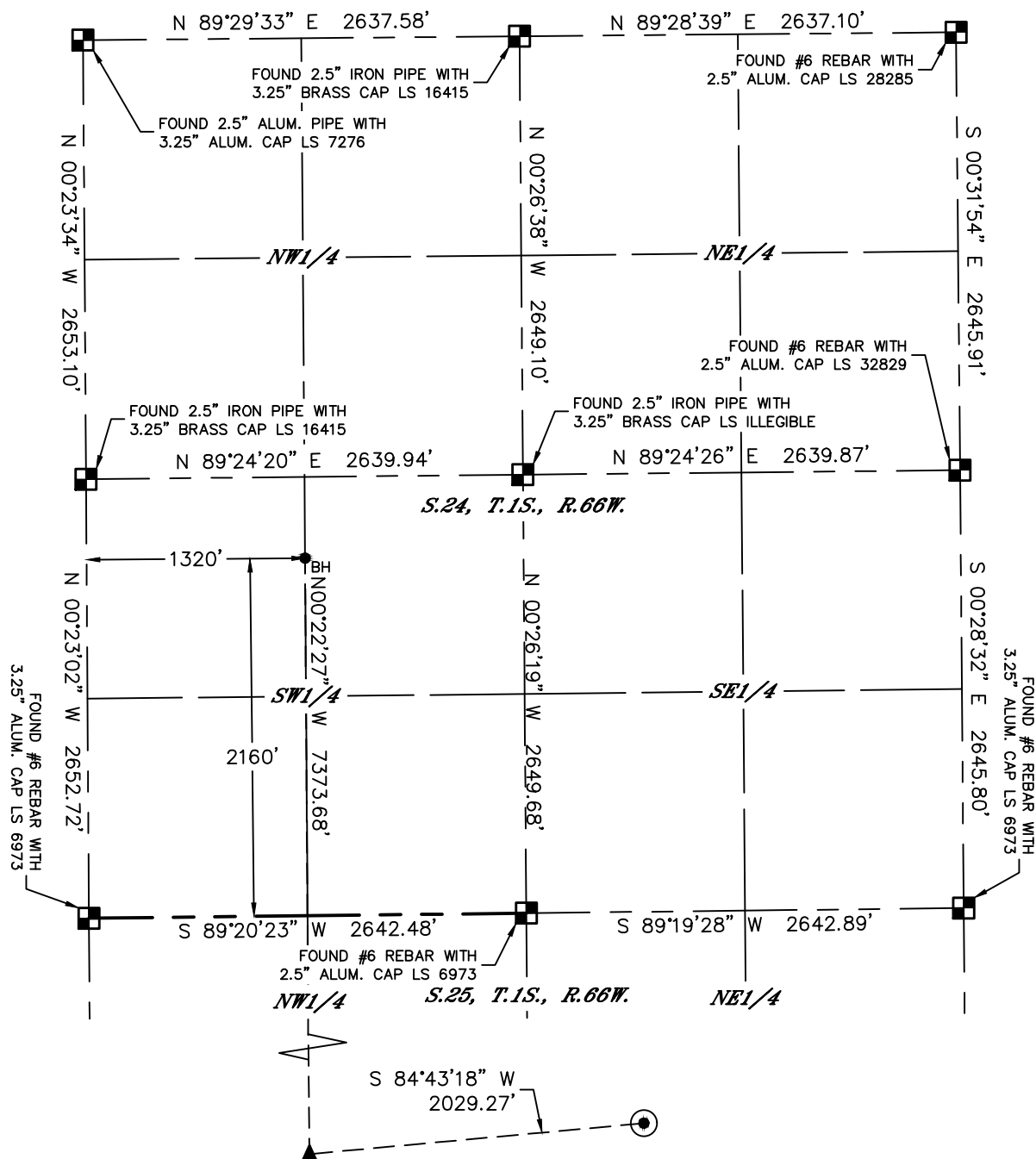


Lat40°, Inc. 6250 W. 10th Street, Unit 2, Greeley, CO 970-515-5294

# WELL LOCATION CERTIFICATE

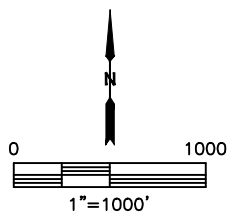
ALMA 1S-66-2524-15NH

SECTION: 25  
TOWNSHIP: 1S  
RANGE: 66W  
6TH. P.M.  
ADAMS COUNTY, CO



## LEGEND

- = ALIQUOT MONUMENT AS DESCRIBED
- = CALCULATED POSITION
- = SURFACE HOLE LOCATION (SHL)
- ▲ = ENTRY POINT LOCATION (EP)
- = BOTTOM HOLE LOCATION (BHL)
- ⊙ = EXISTING WELL
- ⊙ = ABANDONED WELL



SHEET 2 OF 2

Jason S. Allee—On behalf of Lat40°, Inc.  
Colorado Licensed Professional Land Surveyor No. 38479  
DATE: 7/19/2017  
PROJECT#: 2017086