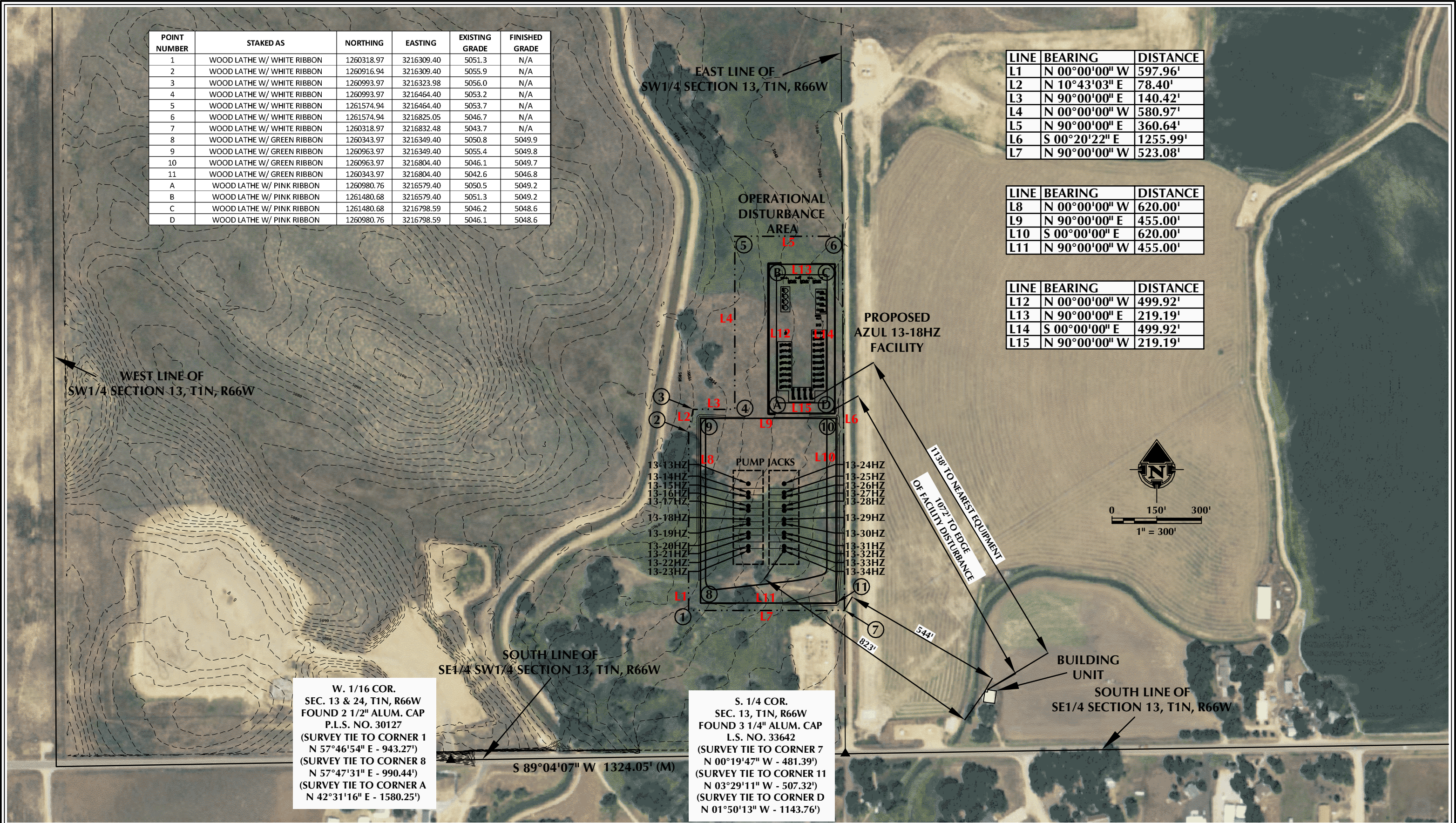


| POINT NUMBER | STAKED AS | NORTHING | EASTING | EXISTING GRADE | FINISHED GRADE |
|-----------------|----------------------------|------------|------------|-------------------|-------------------|
| 1 | WOOD LATHE W/ WHITE RIBBON | 1260318.97 | 3216309.40 | 5051.3 | N/A |
| 2 | WOOD LATHE W/ WHITE RIBBON | 1260916.94 | 3216309.40 | 5055.9 | N/A |
| 3 | WOOD LATHE W/ WHITE RIBBON | 1260993.97 | 3216323.98 | 5056.0 | N/A |
| 4 | WOOD LATHE W/ WHITE RIBBON | 1260993.97 | 3216464.40 | 5053.2 | N/A |
| 5 | WOOD LATHE W/ WHITE RIBBON | 1261574.94 | 3216464.40 | 5053.7 | N/A |
| 6 | WOOD LATHE W/ WHITE RIBBON | 1261574.94 | 3216825.05 | 5046.7 | N/A |
| 7 | WOOD LATHE W/ WHITE RIBBON | 1260318.97 | 3216832.48 | 5043.7 | N/A |
| 8 | WOOD LATHE W/ GREEN RIBBON | 1260343.97 | 3216349.40 | 5050.8 | 5049.9 |
| 9 | WOOD LATHE W/ GREEN RIBBON | 1260963.97 | 3216349.40 | 5055.4 | 5049.8 |
| 10 | WOOD LATHE W/ GREEN RIBBON | 1260963.97 | 3216804.40 | 5046.1 | 5049.7 |
| 11 | WOOD LATHE W/ GREEN RIBBON | 1260343.97 | 3216804.40 | 5042.6 | 5046.8 |
| A | WOOD LATHE W/ PINK RIBBON | 1260980.76 | 3216579.40 | 5050.5 | 5049.2 |
| B | WOOD LATHE W/ PINK RIBBON | 1261480.68 | 3216579.40 | 5051.3 | 5049.2 |
| C | WOOD LATHE W/ PINK RIBBON | 1261480.68 | 3216798.59 | 5046.2 | 5048.6 |
| D | WOOD LATHE W/ PINK RIBBON | 1260980.76 | 3216798.59 | 5046.1 | 5048.6 |

| LINE | BEARING | DISTANCE |
|------|---------------|----------|
| L1 | N 00°00'00" W | 597.96' |
| L2 | N 10°43'03" E | 78.40' |
| L3 | N 90°00'00" E | 140.42' |
| L4 | N 00°00'00" W | 580.97' |
| L5 | N 90°00'00" E | 360.64' |
| L6 | S 00°20'22" E | 1255.99' |
| L7 | N 90°00'00" W | 523.08' |

| LINE | BEARING | DISTANCE |
|------|---------------|----------|
| L8 | N 00°00'00" W | 620.00' |
| L9 | N 90°00'00" E | 455.00' |
| L10 | S 00°00'00" E | 620.00' |
| L11 | N 90°00'00" W | 455.00' |

| LINE | BEARING | DISTANCE |
|------|---------------|----------|
| L12 | N 00°00'00" W | 499.92' |
| L13 | N 90°00'00" E | 219.19' |
| L14 | S 00°00'00" E | 499.92' |
| L15 | N 90°00'00" W | 219.19' |



- NOTES:**
- EQUIPMENT PLACEMENT IS APPROXIMATE AND SUBJECT TO MINOR MODIFICATION.
 - THIS EXHIBIT IS NOT A PROPERTY BOUNDARY SURVEY AND CANNOT BE RELIED UPON TO DETERMINE OWNERSHIP.
 - BASIS OF BEARING DERIVED FROM COLORADO COORDINATE SYSTEM OF 1983 NORTH ZONE.
 - ALL MEASURED DISTANCES ARE GRID.
 - COMBINED SCALE FACTOR: .99972250 (CALCULATED FROM THE WEST 1/4 CORNER OF SECTION 13)
 - DRAWING N/E COORDINATES ARE BASED ON COLORADO COORDINATE SYSTEM OF 1983 NORTH ZONE.

DATA SOURCES:
- AERIAL COURTESY OF ESRI, INC.



LOVELAND OFFICE
1635 Foxtrail Drive, Suite 204
Loveland, Colorado 80538
Phone 970-776-4331

SHERIDAN OFFICE
1095 Saberton Avenue
Sheridan, Wyoming 82801
Phone 307-674-0609

Anadarko
Petroleum Corporation
1099 18th Street
Denver, CO 80202

SCALE: 1" = 300'
DATE SURVEYED: 5/11/17
DATE: 6/21/17
DRAFTER: CDR
REVISED:

CORNER TIE
AZUL 13-18HZ
LOCATED IN SECTION 13, T1N, R66W, 6TH P.M.
WELD COUNTY, COLORADO



| REFERENCE DRAWINGS | | REVISIONS | | | | | |
|--------------------|-------|-----------|-------------|-----------|------|--------------|-------------------|
| | | | | | | | |
| | | | | | | | |
| | | | | | | | |
| | | | | | | | |
| | | | | | | | |
| DWG. NO. | TITLE | NO. | DESCRIPTION | RVG BY | DATE | CHK. DATE | JTK APPR. DATE |




AZUL EAST

PERMIT PLOT PLAN
PRODUCTION FACILITIES
W/ EQUIPMENT LOCATIONS

| | |
|---------------|------------------------|
| DRAWN BY: RWG | CREATION DATE: 3/04/17 |
| APPROVED: JTK | APPR. DATE: 3/04/17 |

| | |
|--------------------|------------------------------|
| | DWG. No.: |
| SCALE: 1/16"=1'-0" | X22107-STOR-01-PP-2020 REV 0 |

| | |
|-----------|---|
| SHEET No. |  |
| — OF — | |