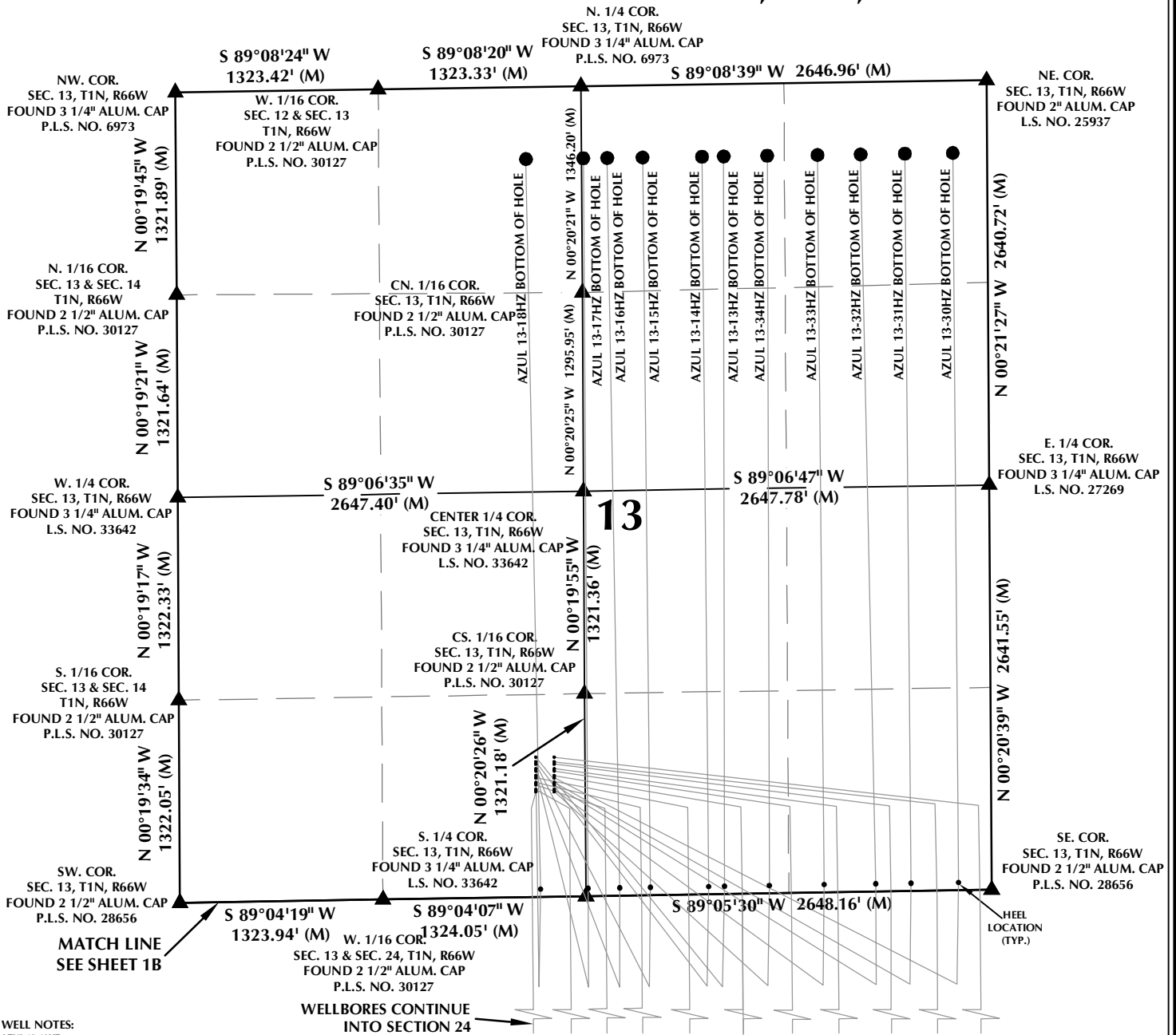


MULTI-WELL PLAN SECTION 13, T1N, R66W



WELL NOTES:

AZUL 13-13HZ
SURFACE: 912' FSL, 2327' FWL (SEC. 13)
BOTTOM HOLE: 471' FNL, 1719' FEL (SEC. 13)

AZUL 13-14HZ
SURFACE: 882' FSL, 2327' FWL (SEC. 13)
BOTTOM HOLE: 471' FNL, 1860' FEL (SEC. 13)

AZUL 13-15HZ
SURFACE: 867' FSL, 2327' FWL (SEC. 13)
BOTTOM HOLE: 470' FNL, 2248' FEL (SEC. 13)

AZUL 13-16HZ
SURFACE: 837' FSL, 2327' FWL (SEC. 13)
BOTTOM HOLE: 470' FNL, 2279' FEL (SEC. 13)

AZUL 13-17HZ
SURFACE: 822' FSL, 2327' FWL (SEC. 13)
BOTTOM HOLE: 470' FNL, 2635' FEL (SEC. 13)

AZUL 13-18HZ
SURFACE: 792' FSL, 2326' FWL (SEC. 13)
BOTTOM HOLE: 470' FNL, 2284' FWL (SEC. 13)

AZUL 13-19HZ
SURFACE: 777' FSL, 2326' FWL (SEC. 13)
BOTTOM HOLE: 468' FSL, 1970' FEL (SEC. 24)

AZUL 13-20HZ
SURFACE: 747' FSL, 2326' FWL (SEC. 13)
BOTTOM HOLE: 468' FSL, 2279' FEL (SEC. 24)

AZUL 13-21HZ
SURFACE: 732' FSL, 2326' FWL (SEC. 13)
BOTTOM HOLE: 468' FSL, 2512' FEL (SEC. 24)

AZUL 13-22HZ
SURFACE: 702' FSL, 2326' FWL (SEC. 13)
BOTTOM HOLE: 468' FSL, 2548' FWL (SEC. 24)

AZUL 13-23HZ
SURFACE: 687' FSL, 2326' FWL (SEC. 13)
BOTTOM HOLE: 467' FSL, 2299' FWL (SEC. 24)

AZUL 13-24HZ
SURFACE: 910' FSL, 2447' FWL (SEC. 13)
BOTTOM HOLE: 468' FSL, 70' FEL (SEC. 24)

AZUL 13-25HZ
SURFACE: 880' FSL, 2447' FWL (SEC. 13)
BOTTOM HOLE: 468' FSL, 70' FEL (SEC. 24)

AZUL 13-26HZ
SURFACE: 865' FSL, 2447' FWL (SEC. 13)
BOTTOM HOLE: 468' FSL, 676' FEL (SEC. 24)

AZUL 13-27HZ
SURFACE: 835' FSL, 2447' FWL (SEC. 13)
BOTTOM HOLE: 468' FSL, 997' FEL (SEC. 24)

AZUL 13-28HZ
SURFACE: 820' FSL, 2447' FWL (SEC. 13)
BOTTOM HOLE: 468' FSL, 1303' FEL (SEC. 24)

AZUL 13-29HZ
SURFACE: 790' FSL, 2446' FWL (SEC. 13)
BOTTOM HOLE: 468' FSL, 1622' FEL (SEC. 24)

AZUL 13-30HZ
SURFACE: 775' FSL, 2446' FWL (SEC. 13)
BOTTOM HOLE: 472' FNL, 223' FEL (SEC. 13)

AZUL 13-31HZ
SURFACE: 745' FSL, 2446' FWL (SEC. 13)
BOTTOM HOLE: 471' FNL, 536' FEL (SEC. 13)

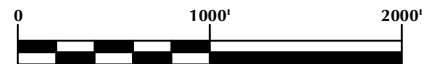
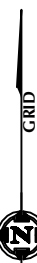
AZUL 13-32HZ
SURFACE: 730' FSL, 2446' FWL (SEC. 13)
BOTTOM HOLE: 471' FNL, 826' FEL (SEC. 13)

AZUL 13-33HZ
SURFACE: 700' FSL, 2446' FWL (SEC. 13)
BOTTOM HOLE: 472' FNL, 1107' FEL (SEC. 13)

AZUL 13-34HZ
SURFACE: 685' FSL, 2446' FWL (SEC. 13)
BOTTOM HOLE: 470' FNL, 1435' FEL (SEC. 13)

NOTES:

- ▲ INDICATES SECTION CORNER
- INDICATES CALCULATED CORNER
- BASIS OF BEARING DERIVED FROM COLORADO COORDINATE SYSTEM OF 1983 NORTH ZONE.
- ALL MEASURED DISTANCES ARE GRID.
- COMBINED SCALE FACTOR: .99972250 CALCULATED FROM THE W. 1/4 CORNER OF SECTION 13, T1N, R66W
- WELL FOOTAGES ARE MEASURED AT RIGHT ANGLES TO THE SECTION LINES.



SCALE: 1" = 1000'

WELL PAD - AZUL 13-18HZ

MULTI-WELL PLAN

AZUL 13-13HZ, AZUL 13-14HZ, AZUL 13-15HZ,
AZUL 13-16HZ, AZUL 13-17HZ, AZUL 13-18HZ,
AZUL 13-19HZ, AZUL 13-20HZ, AZUL 13-21HZ,
AZUL 13-22HZ, AZUL 13-23HZ, AZUL 13-24HZ,
AZUL 13-25HZ, AZUL 13-26HZ, AZUL 13-27HZ,
AZUL 13-28HZ, AZUL 13-29HZ, AZUL 13-30HZ,
AZUL 13-31HZ, AZUL 13-32HZ, AZUL 13-33HZ & AZUL 13-34HZ
LOCATED IN SECTIONS 13 & 24
T1N, R66W, 6TH P.M.
WELD COUNTY, COLORADO

**Kerr-McGee Oil &
Gas Onshore L.P.**

1099 18th Street
Denver, Colorado 80202



CONSULTING, LLC

SHERIDAN OFFICE
1095 Saberton Avenue
Sheridan, Wyoming 82801
Phone 307-674-0609

LOVELAND OFFICE
1635 Foxtrail Drive, Suite 204
Loveland, Colorado 80538
Phone 970-776-4331

DRAFTED BY:	LMO	CHECKED BY:	RKF	SHEET NO:
DATE DRAFTED:	6/19/17	DATE SURVEYED:	5/11/17	1A
REVISED:		FILE NAME:	16-194	1A OF 1

K:\ANADARKO\2016_194_AZUL_T1N_R66W_SEC_13\PLATS\13-18HZ\AZUL 13-18HZ MW PLAN.dwg, 6/21/2017 8:01:41 AM, teagan

