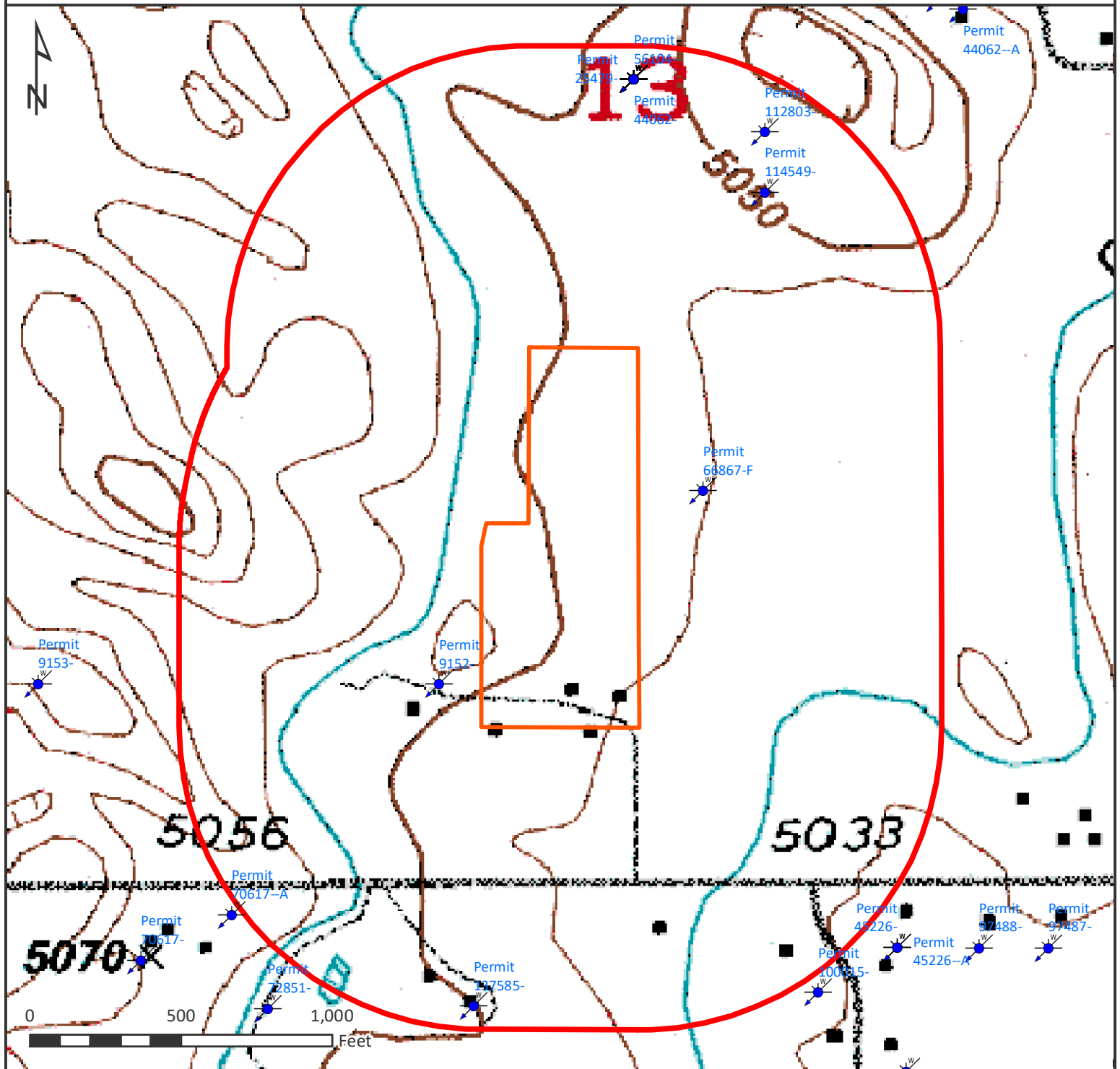


# HYDROLOGY MAP AZUL 13-18HZ






## Nearest Surface Water Features

Speer Canal: 120' W Elev: 5060'  
Ditch: 450' E Elev: 5037'  
Pond: 890' SW Elev: 5051'  
Loc Elev: 5050'

All measurements are made from  
edge of disturbed area.

## Legend

-  Water Well
-  1000' buffer
-  Well pad (proposed)



Date created: 7/19/2017  
Created by: APC Regulatory GIS  
Scale: 1:5,500  
Projection: NAD83 UTM 13N