

T8N, R60W, 6th P.M.

BISON OIL & GAS II

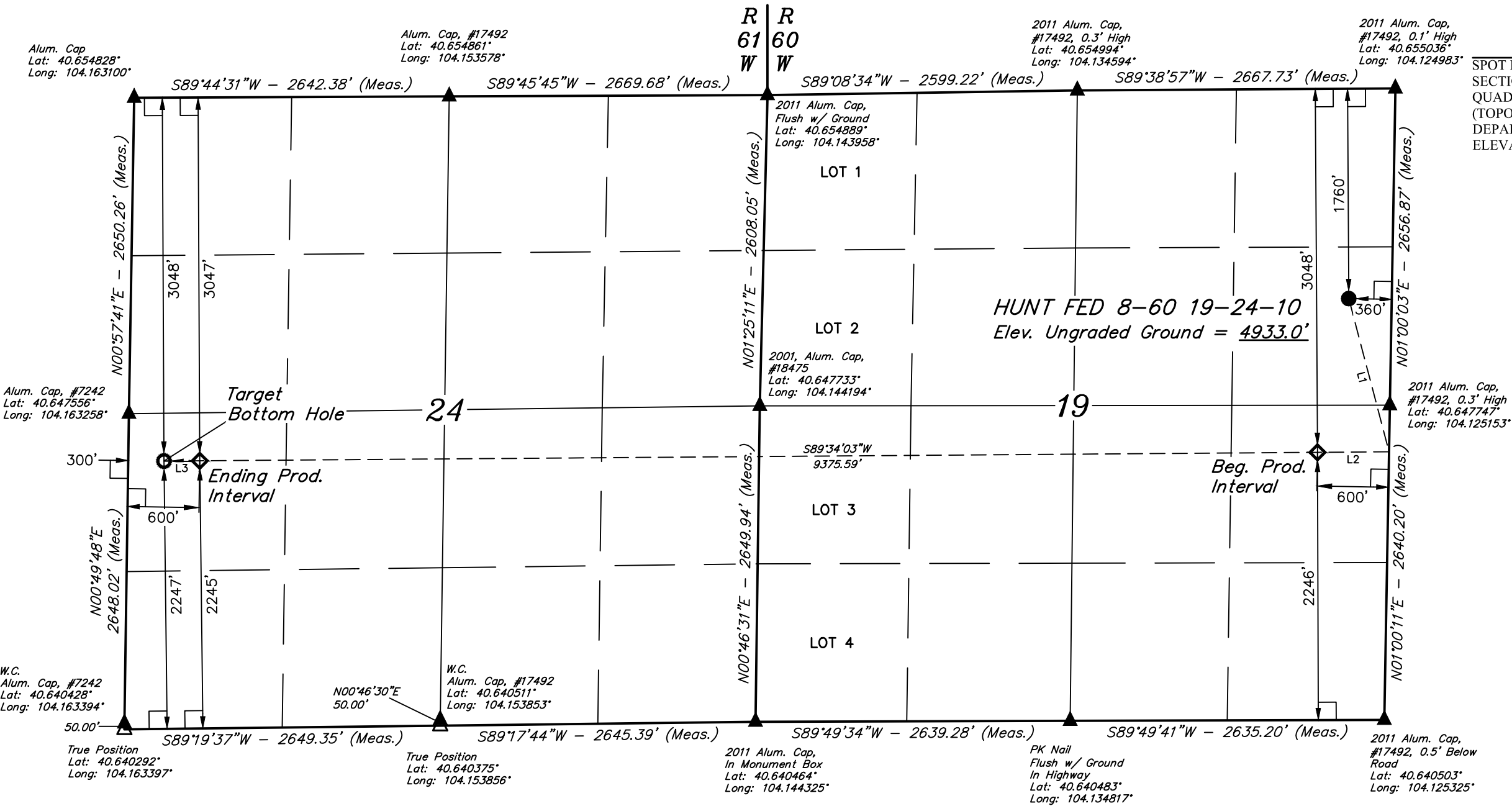
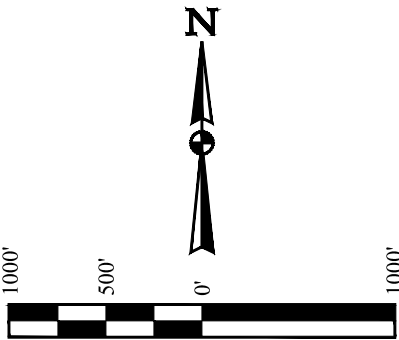
HUNT FED 8-60 19-24-10
SE 1/4 NE 1/4, SECTION 19, T8N, R60W, 6th P.M.
WELD COUNTY, COLORADO

BASIS OF BEARINGS

BASIS OF ELEVATION

SPOT ELEVATION LOCATED AT THE NORTHEAST CORNER OF

SECTION 2, T9N, R61W, 6th P.M. TAKEN FROM THE GROVER SOUTH, QUADRANGLE, COLORADO, WELD COUNTY, 7.5 MINUTE QUAD (TOPOGRAPHIC MAP) PUBLISHED BY THE UNITED STATES DEPARTMENT OF THE INTERIOR, GEOLOGICAL SURVEY. SAID ELEVATION IS MARKED AS BEING 5043 FEET.



LINE TABLE		
LINE	DIRECTION	LENGTH
L1	S14°43'14"E	1328.73'
L2	S89°34'03"W	600.19'
L3	S89°34'03"W	300.07'

PDOP = 2.1

SURFACE LOCATION 1760' FNL 360' FEL	BEG. PROD. INTERVAL 3048' FNL 2246' FSL 600' FWL	ENDING PROD. INTERVAL 3047' FNL 2245' FSL 600' FWL	TARGET BOTTOM HOLE 3048' FNL 2247' FSL 300' FWL
NAD 83 (SURFACE LOCATION)	NAD 83 (BEG. PROD. INTERVAL)	NAD 83 (ENDING PROD. INTERVAL)	NAD 83 (TARGET BOTTOM HOLE)
LATITUDE = 40°39'00.72" (40.650200)	LATITUDE = 40°38'47.98" (40.646661)	LATITUDE = 40°38'47.30" (40.646472)	LATITUDE = 40°38'47.28" (40.646467)
LONGITUDE = 104°07'35.02" (104.126394)	LONGITUDE = 104°07'38.43" (104.127342)	LONGITUDE = 104°09'40.03" (104.161119)	LONGITUDE = 104°09'43.92" (104.162200)
NAD 27 (SURFACE LOCATION)	NAD 27 (BEG. PROD. INTERVAL)	NAD 27 (ENDING PROD. INTERVAL)	NAD 27 (TARGET BOTTOM HOLE)
LATITUDE = 40°39'00.77" (40.650214)	LATITUDE = 40°38'48.03" (40.646675)	LATITUDE = 40°38'47.36" (40.646489)	LATITUDE = 40°38'47.33" (40.646481)
LONGITUDE = 104°07'33.20" (104.125889)	LONGITUDE = 104°07'36.61" (104.126836)	LONGITUDE = 104°09'38.21" (104.160614)	LONGITUDE = 104°09'42.10" (104.161694)
STATE PLANE NAD 83 (CO. NORTH)	STATE PLANE NAD 83 (CO. NORTH)	STATE PLANE NAD 83 (CO. NORTH)	STATE PLANE NAD 83 (CO. NORTH)
N: 1482662.29 E: 3381136.40	N: 1481369.17 E: 3380893.39	N: 1481157.17 E: 3371522.62	N: 1481150.38 E: 3371222.70
STATE PLANE NAD 27 (CO. NORTH)	STATE PLANE NAD 27 (CO. NORTH)	STATE PLANE NAD 27 (CO. NORTH)	STATE PLANE NAD 27 (CO. NORTH)
N: 482661.29 E: 2381286.48	N: 481368.19 E: 2381043.48	N: 481156.33 E: 2371672.42	N: 481149.55 E: 2371372.50

- LEGEND:**
- 90° SYMBOL
 - PROPOSED WELLHEAD.
 - PRODUCTION INTERVAL.
 - TARGET BOTTOM HOLE.
 - SECTION CORNERS LOCATED. (NAD 83)
 - SECTION CORNERS RE-ESTABLISHED. (Not Set on Ground.) (NAD 83)

CERTIFICATE
THIS IS TO CERTIFY THAT THE ABOVE PLAT WAS PREPARED FROM FIELD NOTES OF ACTUAL SURVEYS MADE BY ME OR UNDER MY SUPERVISION AND THAT THE SAME ARE TRUE AND CORRECT TO THE BEST OF MY KNOWLEDGE AND BELIEF.

REGISTERED LAND SURVEYOR
REGISTRATION NO. 28285
STATE OF COLORADO
2015-17



UELS, LLC
Corporate Office * 85 South 200 East
Vernal, UT 84078 * (435) 789-1017

SURVEYED BY	JAMES FRESHWATER, G.B.	08-28-17	SCALE
DRAWN BY	C.C.	09-01-17	1" = 1000'

WELL LOCATION PLAT