

BISON OIL & GAS II, LLC

WELD COUNTY, COLORADO (NAD 83)

SE NE SEC. 19 T8N R60W 6th P.M.

HUNT FED 8-60 19-24-9

ORIGINAL WELLBORE

20 September, 2017

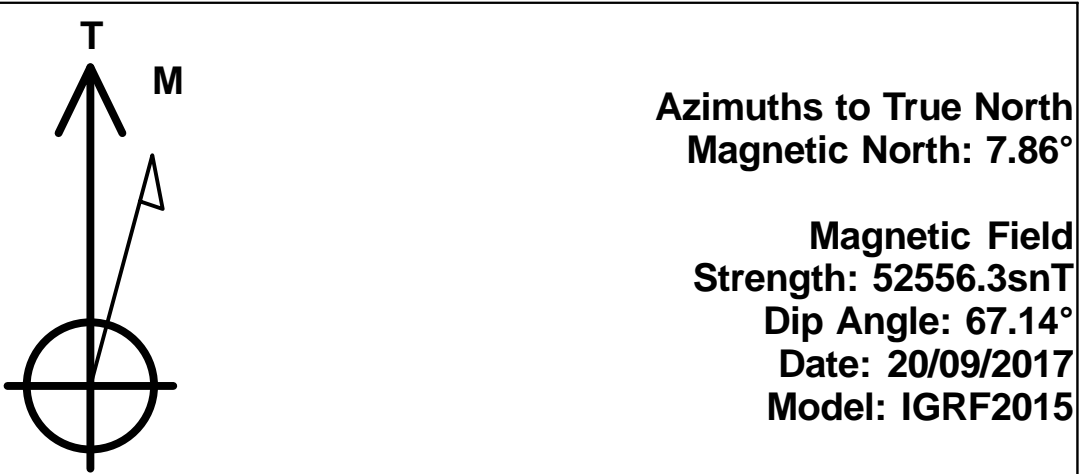
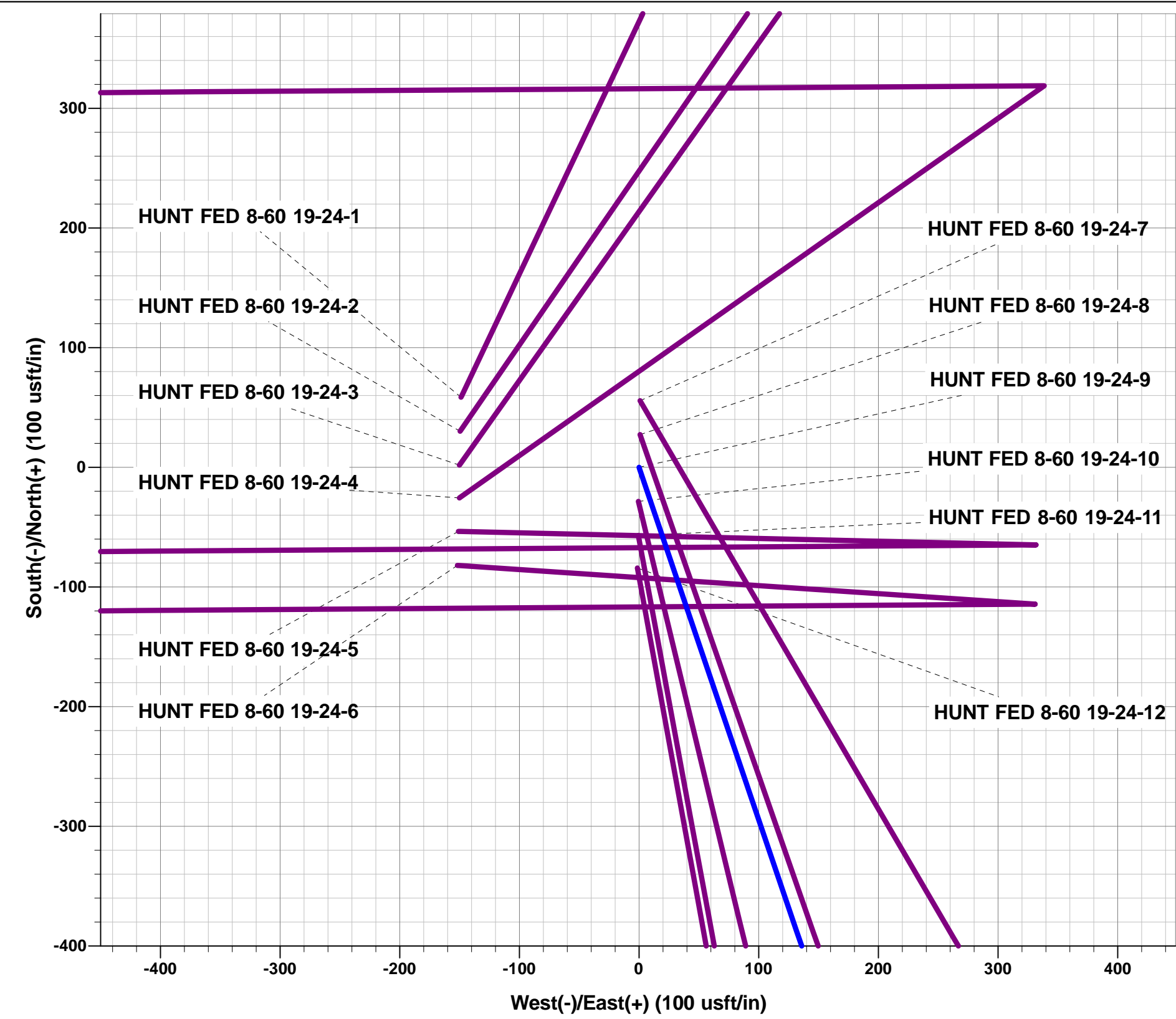
Plan: PROPOSAL #1



Project: WELD COUNTY, COLORADO (NAD 83)
Site: SE NE SEC. 19 T8N R60W 6th P.M.
Well: HUNT FED 8-60 19-24-9
Wellbore: ORIGINAL WELLBORE
Design: PROPOSAL #1

ANNOTATIONS										
TVD	MD	Inc	Azi	+N/-S	+E/-W	VSect	Dep	Annotation		
0.0	0.0	0.00	0.00	0.0	0.0	0.0	0.0	SHL: 1732ft FNL & 360ft FEL of Sec 19		
400.0	400.0	0.00	0.00	0.0	0.0	0.0	0.0	START NUDGE (2°/100ft BUR)		
1020.1	1025.0	12.50	161.24	-64.3	21.8	-15.3	67.9	EOB TO 12.5° INC		
4843.4	4941.1	12.50	161.24	-866.9	294.4	-205.7	915.5	END OF TANGENT		
5463.4	5566.1	0.00	0.00	-931.2	316.2	-220.9	983.4	EOD TO VERTICAL		
5879.6	5982.3	0.00	0.00	-931.2	316.2	-220.9	983.4	KOP (10°/100ft BUR)		
6452.5	6882.2	90.00	269.60	-935.2	-256.7	349.4	1556.3	BPI: 2665ft FNL & 600ft FEL of Sec 19		
6452.5	16256.4	90.00	269.60	-1001.1	-9630.6	9682.4	10930.5	EPI: 2664ft FNL & 600ft FWL of Sec 24		
6452.5	16260.7	90.00	269.47	-1001.1	-9635.0	9686.8	10934.8	EOT TO 269.47° AZ		
6452.5	16556.4	90.00	269.47	-1003.9	-9930.6	9981.2	11230.4	BHL: 2665ft FNL & 300ft FWL of Sec 24		

WELLBORE TARGET DETAILS (LAT/LONG)					
Name	TVD	+N/-S	+E/-W	Latitude	Longitude
KOP - HUNT FED 8-60 19-24-9	5879.6	-931.2	316.2	40.647722	-104.125253
BPI - HUNT FED 8-60 19-24-9	6452.5	-935.2	-256.7	40.647711	-104.127317
EPI - HUNT FED 8-60 19-24-9	6452.5	-1001.1	-9630.6	40.647525	-104.161097
BHL - HUNT FED 8-60 19-24-9	6452.5	-1003.9	-9930.6	40.647517	-104.162178



FORMATION TOP DETAILS		
TVDPath	MDPath	Formation
491.0	490.5	PIERRE SH (BASE FOX HILLS)
3506.0	3570.8	PARKMAN
4031.0	4108.5	SUSSEX
5129.0	5230.5	SHANNON
6158.0	6272.5	SHARON SPRINGS SHALE
6228.0	6356.2	NIOBRARA FORMATION
6238.0	6368.9	NIOBRARA A CHALK
6348.0	6529.8	NIOBRARA B CHALK
6418.0	6680.9	NIOBRARA C CHALK

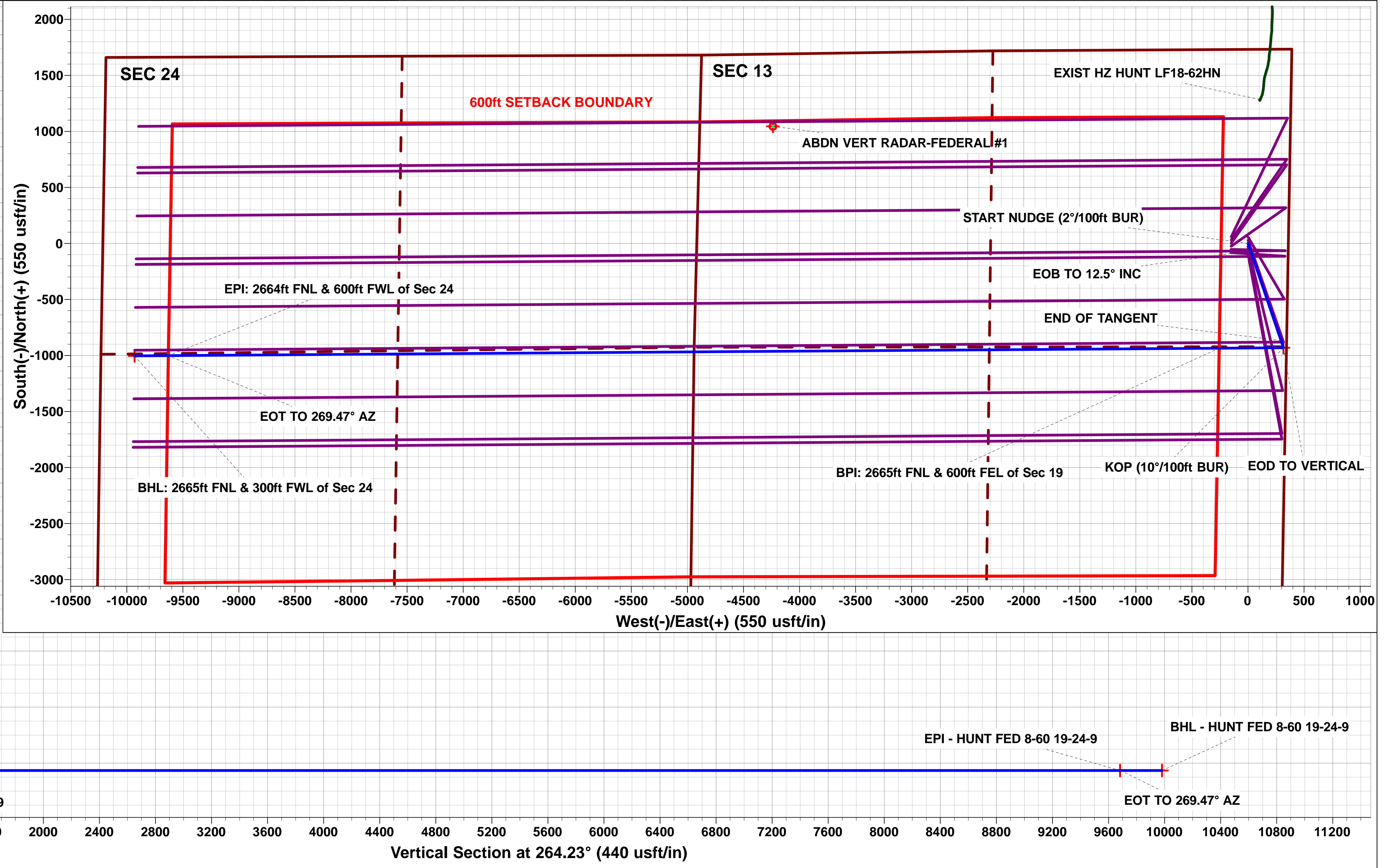
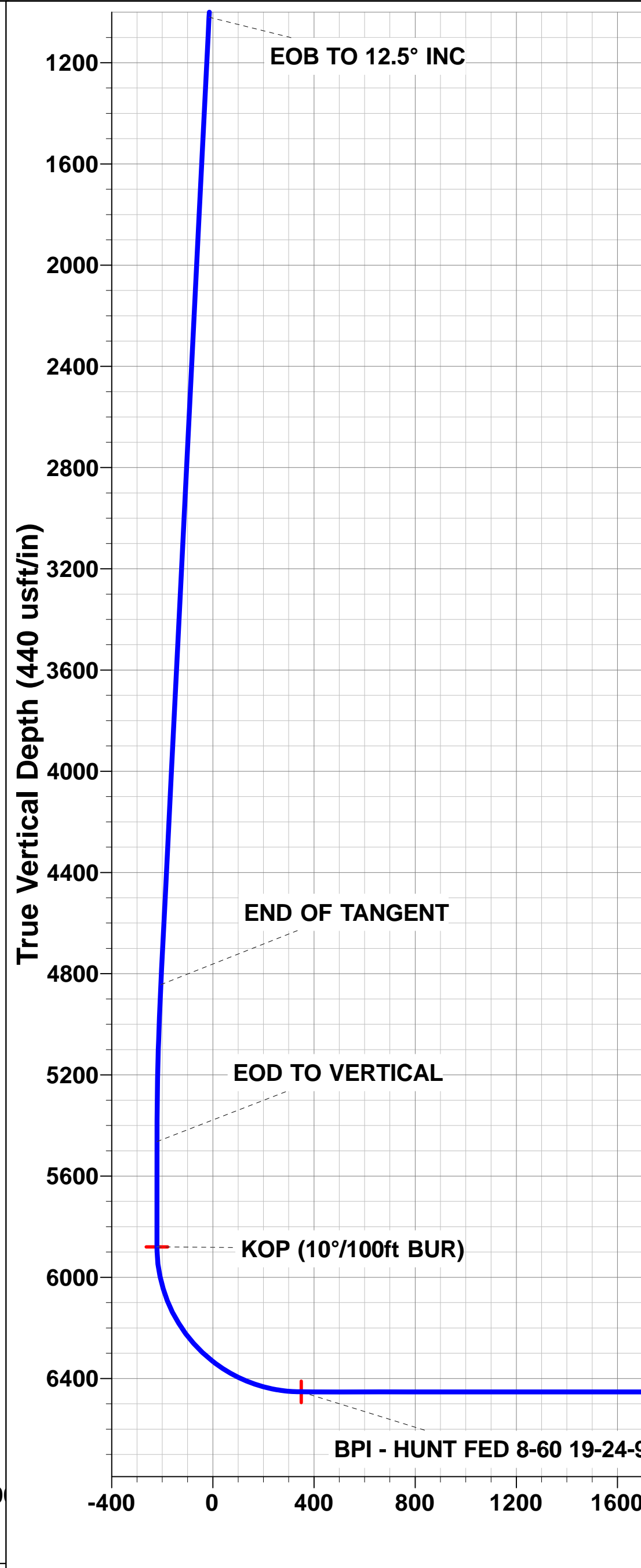
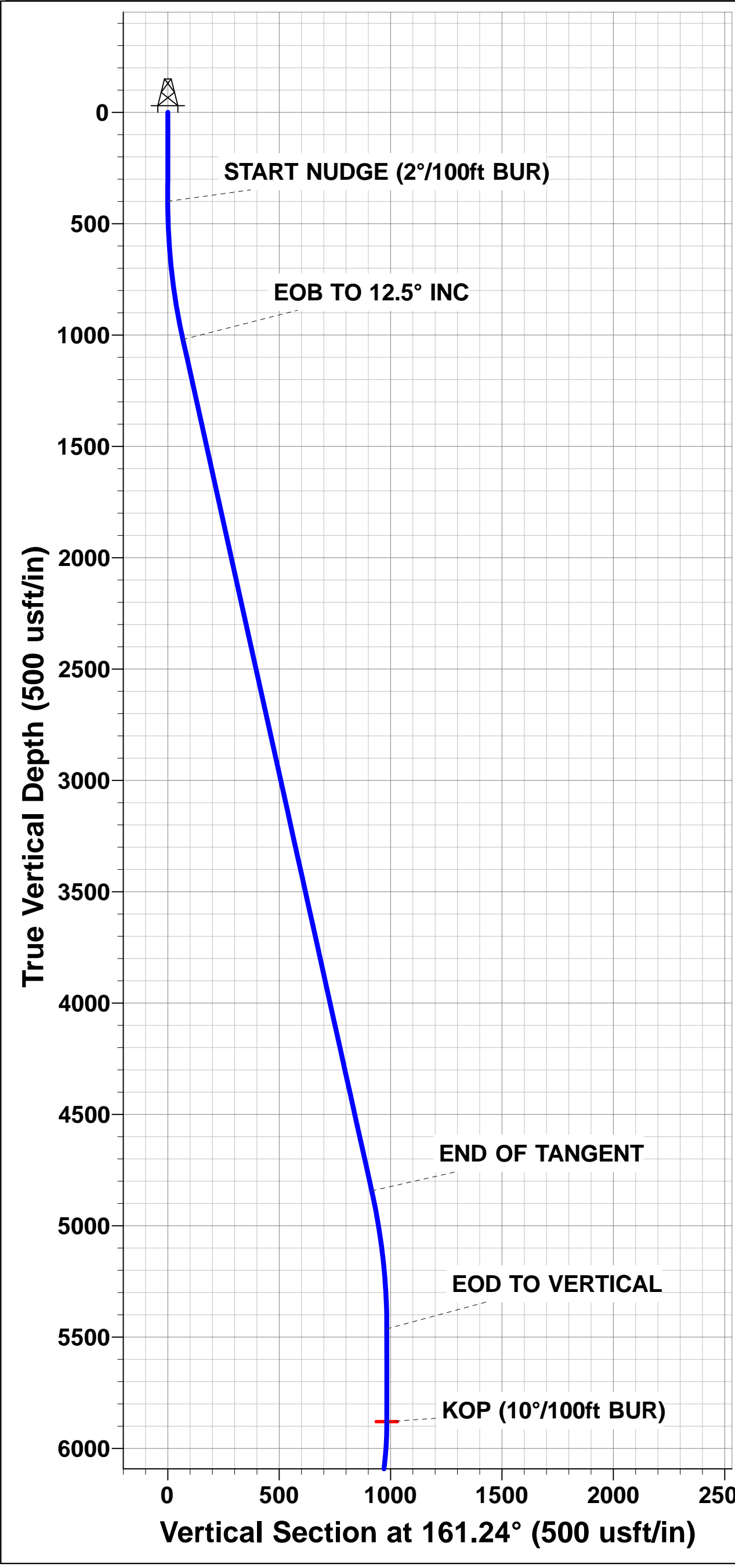
PROPOSED LOCAL COORDINATES:

SHL:1732ft FNL & 360ft FEL of Sec 19

BEGIN PROD INT: 2665ft FNL & 600ft FEL of Sec 19

END PROD INTERVAL: 2664ft FNL & 600ft FWL of Sec 24

BHL: 2665ft FNL & 300ft FWL of Sec 24



Planning Report



Database:	EDM 5000.1 Single User Db	Local Co-ordinate Reference:	Well HUNT FED 8-60 19-24-9
Company:	BISON OIL & GAS II, LLC	TVD Reference:	KB-EST @ 4957.5usft (Original Well Elev)
Project:	WELD COUNTY, COLORADO (NAD 83)	MD Reference:	KB-EST @ 4957.5usft (Original Well Elev)
Site:	SE NE SEC. 19 T8N R60W 6th P.M.	North Reference:	True
Well:	HUNT FED 8-60 19-24-9	Survey Calculation Method:	Minimum Curvature
Wellbore:	ORIGINAL WELLBORE		
Design:	PROPOSAL #1		

Project	WELD COUNTY, COLORADO (NAD 83)		
Map System:	US State Plane 1983	System Datum:	Mean Sea Level
Geo Datum:	North American Datum 1983		
Map Zone:	Colorado Northern Zone		Using geodetic scale factor

Site		SE NE SEC. 19 T8N R60W 6th P.M.			
Site Position:		Northing:	1,482,747.06 usft	Latitude:	40.650439
From:	Lat/Long	Easting:	3,380,986.80 usft	Longitude:	-104.126928
Position Uncertainty:	0.0 usft	Slot Radius:	1.10000 ft	Grid Convergence:	0.89 °

Well	HUNT FED 8-60 19-24-9					
Well Position	+N-S	-58.7 usft	Northing:	1,482,690.70 usfi	Latitude:	40.650278
	+E-W	148.7 usft	Easting:	3,381,136.42 usfi	Longitude:	-104.126392
Position Uncertainty		0.0 usft	Wellhead Elevation:	usfi	Ground Level:	4,932.5 usft

Wellbore	ORIGINAL WELLBORE				
Magnetics	Model Name	Sample Date	Declination (°)	Dip Angle (°)	Field Strength (nT)
	IGRF2015	20/09/2017	7.86	67.14	52,556

Design	PROPOSAL #1			
Audit Notes:				
Version:	Phase:	PROTOTYPE	Tie On Depth:	0.0
Vertical Section:	Depth From (TVD) (usft)	+N-S (usft)	+E-W (usft)	Direction (°)
	0.0	0.0	0.0	264.23

Plan Sections											
MD (usft)	Inc (°)	Azi (°)	Vertical Depth	SS (usft)	+N-S (usft)	+E-W (usft)	Dogleg Rate (°/100usf)	Build Rate (°/100usf)	Turn Rate (°/100usf)	TFO (°)	Target
0.0	0.00	0.00	0.0	-4,957.5	0.0	0.0	0.00	0.00	0.00	0.00	
400.0	0.00	0.00	400.0	-4,557.5	0.0	0.0	0.00	0.00	0.00	0.00	
1,025.0	12.50	161.24	1,020.1	-3,937.4	-64.3	21.8	2.00	2.00	0.00	161.24	
4,941.1	12.50	161.24	4,843.4	-114.1	-866.9	294.4	0.00	0.00	0.00	0.00	
5,566.1	0.00	0.00	5,463.4	505.9	-931.2	316.2	2.00	-2.00	0.00	180.00	
5,982.3	0.00	0.00	5,879.6	922.1	-931.2	316.2	0.00	0.00	0.00	0.00	KOP - HUNT FED 8
6,882.2	90.00	269.60	6,452.5	1,495.0	-935.2	-256.7	10.00	10.00	-10.05	269.60	BPI - HUNT FED 8-
16,256.4	90.00	269.60	6,452.5	1,495.0	-1,001.1	-9,630.6	0.00	0.00	0.00	-87.60	EPI - HUNT FED 8-
16,260.7	90.00	269.47	6,452.5	1,495.0	-1,001.1	-9,635.0	3.00	0.00	-3.00	-90.01	
16,556.4	90.00	269.47	6,452.5	1,495.0	-1,003.9	-9,930.6	0.00	0.00	0.00	0.00	BHL - HUNT FED 8

Planning Report



Database:	EDM 5000.1 Single User Db	Local Co-ordinate Reference:	Well HUNT FED 8-60 19-24-9
Company:	BISON OIL & GAS II, LLC	TVD Reference:	KB-EST @ 4957.5usft (Original Well Elev)
Project:	WELD COUNTY, COLORADO (NAD 83)	MD Reference:	KB-EST @ 4957.5usft (Original Well Elev)
Site:	SE NE SEC. 19 T8N R60W 6th P.M.	North Reference:	True
Well:	HUNT FED 8-60 19-24-9	Survey Calculation Method:	Minimum Curvature
Wellbore:	ORIGINAL WELLBORE		
Design:	PROPOSAL #1		

Planned Survey

MD (usft)	Inc (°)	Azi (°)	TVD (usft)	SS (usft)	+N/-S (usft)	+E/-W (usft)	Vertical Section (usft)	Dogleg Rate (°/100usft)	Build Rate (°/100usft)	Turn Rate (°/100usft)
SHL: 1732ft FNL & 360ft FEL of Sec 19										
0.0	0.00	0.00	0.0	4,957.50	0.0	0.0	0.0	0.00	0.00	0.00
100.0	0.00	0.00	100.0	4,857.50	0.0	0.0	0.0	0.00	0.00	0.00
200.0	0.00	0.00	200.0	4,757.50	0.0	0.0	0.0	0.00	0.00	0.00
300.0	0.00	0.00	300.0	4,657.50	0.0	0.0	0.0	0.00	0.00	0.00
START NUDGE (2°/100ft BUR)										
400.0	0.00	0.00	400.0	4,557.50	0.0	0.0	0.0	0.00	0.00	0.00
PIERRE SHALE (BASE FOX HILLS)										
490.5	1.81	161.24	490.5	4,467.00	-1.4	0.5	-0.3	2.00	2.00	0.00
500.0	2.00	161.24	500.0	4,457.52	-1.7	0.6	-0.4	2.00	2.00	0.00
600.0	4.00	161.24	599.8	4,357.66	-6.6	2.2	-1.6	2.00	2.00	0.00
700.0	6.00	161.24	699.5	4,258.05	-14.9	5.0	-3.5	2.00	2.00	0.00
800.0	8.00	161.24	798.7	4,158.80	-26.4	9.0	-6.3	2.00	2.00	0.00
900.0	10.00	161.24	897.5	4,060.03	-41.2	14.0	-9.8	2.00	2.00	0.00
1,000.0	12.00	161.24	995.6	3,961.88	-59.3	20.1	-14.1	2.00	2.00	0.00
EOB TO 12.5° INC										
1,025.0	12.50	161.24	1,020.1	3,937.45	-64.3	21.8	-15.3	2.00	2.00	0.00
1,100.0	12.50	161.24	1,093.3	3,864.22	-79.7	27.1	-18.9	0.00	0.00	0.00
1,200.0	12.50	161.24	1,190.9	3,766.59	-100.2	34.0	-23.8	0.00	0.00	0.00
1,300.0	12.50	161.24	1,288.5	3,668.96	-120.7	41.0	-28.6	0.00	0.00	0.00
1,400.0	12.50	161.24	1,386.2	3,571.34	-141.2	47.9	-33.5	0.00	0.00	0.00
1,500.0	12.50	161.24	1,483.8	3,473.71	-161.7	54.9	-38.4	0.00	0.00	0.00
1,600.0	12.50	161.24	1,581.4	3,376.08	-182.1	61.8	-43.2	0.00	0.00	0.00
1,700.0	12.50	161.24	1,679.1	3,278.45	-202.6	68.8	-48.1	0.00	0.00	0.00
1,800.0	12.50	161.24	1,776.7	3,180.82	-223.1	75.8	-52.9	0.00	0.00	0.00
1,900.0	12.50	161.24	1,874.3	3,083.19	-243.6	82.7	-57.8	0.00	0.00	0.00
2,000.0	12.50	161.24	1,971.9	2,985.56	-264.1	89.7	-62.7	0.00	0.00	0.00
2,100.0	12.50	161.24	2,069.6	2,887.93	-284.6	96.6	-67.5	0.00	0.00	0.00
2,200.0	12.50	161.24	2,167.2	2,790.30	-305.1	103.6	-72.4	0.00	0.00	0.00
2,300.0	12.50	161.24	2,264.8	2,692.67	-325.6	110.6	-77.3	0.00	0.00	0.00
2,400.0	12.50	161.24	2,362.5	2,595.04	-346.1	117.5	-82.1	0.00	0.00	0.00
2,500.0	12.50	161.24	2,460.1	2,497.41	-366.6	124.5	-87.0	0.00	0.00	0.00
2,600.0	12.50	161.24	2,557.7	2,399.78	-387.1	131.4	-91.8	0.00	0.00	0.00
2,700.0	12.50	161.24	2,655.3	2,302.15	-407.6	138.4	-96.7	0.00	0.00	0.00
2,800.0	12.50	161.24	2,753.0	2,204.52	-428.1	145.4	-101.6	0.00	0.00	0.00
2,900.0	12.50	161.24	2,850.6	2,106.89	-448.6	152.3	-106.4	0.00	0.00	0.00
3,000.0	12.50	161.24	2,948.2	2,009.26	-469.1	159.3	-111.3	0.00	0.00	0.00
3,100.0	12.50	161.24	3,045.9	1,911.63	-489.6	166.2	-116.2	0.00	0.00	0.00
3,200.0	12.50	161.24	3,143.5	1,814.00	-510.1	173.2	-121.0	0.00	0.00	0.00
3,300.0	12.50	161.24	3,241.1	1,716.37	-530.6	180.2	-125.9	0.00	0.00	0.00
3,400.0	12.50	161.24	3,338.8	1,618.74	-551.0	187.1	-130.7	0.00	0.00	0.00
3,500.0	12.50	161.24	3,436.4	1,521.11	-571.5	194.1	-135.6	0.00	0.00	0.00
PARKMAN										
3,570.8	12.50	161.24	3,505.5	1,452.00	-586.1	199.0	-139.0	0.00	0.00	0.00
3,600.0	12.50	161.24	3,534.0	1,423.48	-592.0	201.0	-140.5	0.00	0.00	0.00
3,700.0	12.50	161.24	3,631.6	1,325.85	-612.5	208.0	-145.3	0.00	0.00	0.00
3,800.0	12.50	161.24	3,729.3	1,228.22	-633.0	215.0	-150.2	0.00	0.00	0.00
3,900.0	12.50	161.24	3,826.9	1,130.60	-653.5	221.9	-155.1	0.00	0.00	0.00
4,000.0	12.50	161.24	3,924.5	1,032.97	-674.0	228.9	-159.9	0.00	0.00	0.00
4,100.0	12.50	161.24	4,022.2	935.34	-694.5	235.8	-164.8	0.00	0.00	0.00
SUSSEX										
4,108.5	12.50	161.24	4,030.5	927.00	-696.3	236.4	-165.2	0.00	0.00	0.00
4,200.0	12.50	161.24	4,119.8	837.71	-715.0	242.8	-169.6	0.00	0.00	0.00

Planning Report



Database:	EDM 5000.1 Single User Db	Local Co-ordinate Reference:	Well HUNT FED 8-60 19-24-9
Company:	BISON OIL & GAS II, LLC	TVD Reference:	KB-EST @ 4957.5usft (Original Well Elev)
Project:	WELD COUNTY, COLORADO (NAD 83)	MD Reference:	KB-EST @ 4957.5usft (Original Well Elev)
Site:	SE NE SEC. 19 T8N R60W 6th P.M.	North Reference:	True
Well:	HUNT FED 8-60 19-24-9	Survey Calculation Method:	Minimum Curvature
Wellbore:	ORIGINAL WELLBORE		
Design:	PROPOSAL #1		

Planned Survey										
MD (usft)	Inc (°)	Azi (°)	TVD (usft)	SS (usft)	+N/-S (usft)	+E/-W (usft)	Vertical Section (usft)	Dogleg Rate (°/100usft)	Build Rate (°/100usft)	Turn Rate (°/100usft)
4,300.0	12.50	161.24	4,217.4	740.08	-735.5	249.7	-174.5	0.00	0.00	0.00
4,400.0	12.50	161.24	4,315.1	642.45	-756.0	256.7	-179.4	0.00	0.00	0.00
4,500.0	12.50	161.24	4,412.7	544.82	-776.5	263.7	-184.2	0.00	0.00	0.00
4,600.0	12.50	161.24	4,510.3	447.19	-797.0	270.6	-189.1	0.00	0.00	0.00
4,700.0	12.50	161.24	4,607.9	349.56	-817.5	277.6	-194.0	0.00	0.00	0.00
4,800.0	12.50	161.24	4,705.6	251.93	-838.0	284.5	-198.8	0.00	0.00	0.00
4,900.0	12.50	161.24	4,803.2	154.30	-858.5	291.5	-203.7	0.00	0.00	0.00
END OF TANGENT										
4,941.1	12.50	161.24	4,843.4	114.14	-866.9	294.4	-205.7	0.00	0.00	0.00
5,000.0	11.32	161.24	4,901.0	56.54	-878.4	298.3	-208.4	2.00	-2.00	0.00
5,100.0	9.32	161.24	4,999.3	-41.83	-895.4	304.0	-212.4	2.00	-2.00	0.00
5,200.0	7.32	161.24	5,098.3	-140.78	-909.1	308.7	-215.7	2.00	-2.00	0.00
SHANNON										
5,230.5	6.71	161.24	5,128.5	-171.00	-912.6	309.9	-216.5	2.00	-2.00	0.00
5,300.0	5.32	161.24	5,197.7	-240.16	-919.5	312.2	-218.2	2.00	-2.00	0.00
5,400.0	3.32	161.24	5,297.4	-339.87	-926.6	314.7	-219.9	2.00	-2.00	0.00
5,500.0	1.32	161.24	5,397.3	-439.79	-930.5	316.0	-220.8	2.00	-2.00	0.00
EOD TO VERTICAL										
5,566.1	0.00	0.00	5,463.4	-505.91	-931.2	316.2	-220.9	2.00	-2.00	0.00
5,600.0	0.00	0.00	5,497.3	-539.78	-931.2	316.2	-220.9	0.00	0.00	0.00
5,700.0	0.00	0.00	5,597.3	-639.78	-931.2	316.2	-220.9	0.00	0.00	0.00
5,800.0	0.00	0.00	5,697.3	-739.78	-931.2	316.2	-220.9	0.00	0.00	0.00
5,900.0	0.00	0.00	5,797.3	-839.78	-931.2	316.2	-220.9	0.00	0.00	0.00
KOP (10°/100ft BUR)										
5,982.3	0.00	0.00	5,879.6	-922.10	-931.2	316.2	-220.9	0.00	0.00	0.00
6,000.0	1.77	269.60	5,897.3	-939.78	-931.2	315.9	-220.7	10.00	10.00	0.00
6,100.0	11.77	269.60	5,996.5	-1,038.95	-931.3	304.2	-208.9	10.00	10.00	0.00
6,200.0	21.77	269.60	6,092.1	-1,134.58	-931.5	275.3	-180.3	10.00	10.00	0.00
SHARON SPRINGS SHALE										
6,272.5	29.02	269.60	6,157.5	-1,200.00	-931.7	244.3	-149.3	10.00	10.00	0.00
6,300.0	31.77	269.60	6,181.2	-1,223.75	-931.8	230.4	-135.5	10.00	10.00	0.00
NIOBRARA FORMATION										
6,356.2	37.39	269.60	6,227.5	-1,270.00	-932.0	198.5	-103.7	10.00	10.00	0.00
NIOBRARA A CHALK										
6,368.9	38.66	269.60	6,237.5	-1,280.00	-932.1	190.7	-95.9	10.00	10.00	0.00
6,400.0	41.77	269.60	6,261.2	-1,303.75	-932.2	170.6	-75.9	10.00	10.00	0.00
6,500.0	51.77	269.60	6,329.7	-1,372.15	-932.7	97.8	-3.5	10.00	10.00	0.00
NIOBRARA B CHALK										
6,529.8	54.76	269.60	6,347.5	-1,390.00	-932.9	73.9	20.3	10.00	10.00	0.00
6,600.0	61.77	269.60	6,384.4	-1,426.88	-933.3	14.3	79.7	10.00	10.00	0.00
NIOBRARA C CHALK										
6,680.9	69.87	269.60	6,417.5	-1,460.00	-933.8	-59.5	153.1	10.00	10.00	0.00
6,700.0	71.78	269.60	6,423.8	-1,466.26	-934.0	-77.5	171.1	10.00	10.00	0.00
6,800.0	81.78	269.60	6,446.6	-1,489.11	-934.6	-174.7	267.9	10.00	10.00	0.00
BPI: 2665ft FNL & 600ft FEL of Sec 19										
6,882.2	90.00	269.60	6,452.5	-1,495.00	-935.2	-256.7	349.4	10.00	10.00	0.00
6,900.0	90.00	269.60	6,452.5	-1,495.00	-935.3	-274.5	367.1	0.00	0.00	0.00
7,000.0	90.00	269.60	6,452.5	-1,495.00	-936.0	-374.5	466.7	0.00	0.00	0.00
7,100.0	90.00	269.60	6,452.5	-1,495.00	-936.7	-474.5	566.3	0.00	0.00	0.00
7,200.0	90.00	269.60	6,452.5	-1,495.00	-937.4	-574.4	665.8	0.00	0.00	0.00
7,300.0	90.00	269.60	6,452.5	-1,495.00	-938.1	-674.4	765.4	0.00	0.00	0.00
7,400.0	90.00	269.60	6,452.5	-1,495.00	-938.9	-774.4	864.9	0.00	0.00	0.00
7,500.0	90.00	269.60	6,452.5	-1,495.00	-939.6	-874.4	964.5	0.00	0.00	0.00

Planning Report



Database:	EDM 5000.1 Single User Db	Local Co-ordinate Reference:	Well HUNT FED 8-60 19-24-9
Company:	BISON OIL & GAS II, LLC	TVD Reference:	KB-EST @ 4957.5usft (Original Well Elev)
Project:	WELD COUNTY, COLORADO (NAD 83)	MD Reference:	KB-EST @ 4957.5usft (Original Well Elev)
Site:	SE NE SEC. 19 T8N R60W 6th P.M.	North Reference:	True
Well:	HUNT FED 8-60 19-24-9	Survey Calculation Method:	Minimum Curvature
Wellbore:	ORIGINAL WELLBORE		
Design:	PROPOSAL #1		

Planned Survey										
MD (usft)	Inc (°)	Azi (°)	TVD (usft)	SS (usft)	+N/-S (usft)	+E/-W (usft)	Vertical Section (usft)	Dogleg Rate (°/100usft)	Build Rate (°/100usft)	Turn Rate (°/100usft)
7,600.0	90.00	269.60	6,452.5	-1,495.00	-940.3	-974.4	1,064.1	0.00	0.00	0.00
7,700.0	90.00	269.60	6,452.5	-1,495.00	-941.0	-1,074.4	1,163.6	0.00	0.00	0.00
7,800.0	90.00	269.60	6,452.5	-1,495.00	-941.7	-1,174.4	1,263.2	0.00	0.00	0.00
7,900.0	90.00	269.60	6,452.5	-1,495.00	-942.4	-1,274.4	1,362.8	0.00	0.00	0.00
8,000.0	90.00	269.60	6,452.5	-1,495.00	-943.1	-1,374.4	1,462.3	0.00	0.00	0.00
8,100.0	90.00	269.60	6,452.5	-1,495.00	-943.8	-1,474.4	1,561.9	0.00	0.00	0.00
8,200.0	90.00	269.60	6,452.5	-1,495.00	-944.5	-1,574.4	1,661.4	0.00	0.00	0.00
8,300.0	90.00	269.60	6,452.5	-1,495.00	-945.2	-1,674.4	1,761.0	0.00	0.00	0.00
8,400.0	90.00	269.60	6,452.5	-1,495.00	-945.9	-1,774.4	1,860.6	0.00	0.00	0.00
8,500.0	90.00	269.60	6,452.5	-1,495.00	-946.6	-1,874.4	1,960.1	0.00	0.00	0.00
8,600.0	90.00	269.60	6,452.5	-1,495.00	-947.3	-1,974.4	2,059.7	0.00	0.00	0.00
8,700.0	90.00	269.60	6,452.5	-1,495.00	-948.0	-2,074.4	2,159.2	0.00	0.00	0.00
8,800.0	90.00	269.60	6,452.5	-1,495.00	-948.7	-2,174.4	2,258.8	0.00	0.00	0.00
8,900.0	90.00	269.60	6,452.5	-1,495.00	-949.4	-2,274.4	2,358.4	0.00	0.00	0.00
9,000.0	90.00	269.60	6,452.5	-1,495.00	-950.1	-2,374.4	2,457.9	0.00	0.00	0.00
9,100.0	90.00	269.60	6,452.5	-1,495.00	-950.8	-2,474.4	2,557.5	0.00	0.00	0.00
9,200.0	90.00	269.60	6,452.5	-1,495.00	-951.5	-2,574.4	2,657.0	0.00	0.00	0.00
9,300.0	90.00	269.60	6,452.5	-1,495.00	-952.2	-2,674.4	2,756.6	0.00	0.00	0.00
9,400.0	90.00	269.60	6,452.5	-1,495.00	-952.9	-2,774.4	2,856.2	0.00	0.00	0.00
9,500.0	90.00	269.60	6,452.5	-1,495.00	-953.6	-2,874.4	2,955.7	0.00	0.00	0.00
9,600.0	90.00	269.60	6,452.5	-1,495.00	-954.3	-2,974.4	3,055.3	0.00	0.00	0.00
9,700.0	90.00	269.60	6,452.5	-1,495.00	-955.0	-3,074.4	3,154.8	0.00	0.00	0.00
9,800.0	90.00	269.60	6,452.5	-1,495.00	-955.7	-3,174.4	3,254.4	0.00	0.00	0.00
9,900.0	90.00	269.60	6,452.5	-1,495.00	-956.4	-3,274.4	3,354.0	0.00	0.00	0.00
10,000.0	90.00	269.60	6,452.5	-1,495.00	-957.1	-3,374.4	3,453.5	0.00	0.00	0.00
10,100.0	90.00	269.60	6,452.5	-1,495.00	-957.8	-3,474.4	3,553.1	0.00	0.00	0.00
10,200.0	90.00	269.60	6,452.5	-1,495.00	-958.5	-3,574.4	3,652.7	0.00	0.00	0.00
10,300.0	90.00	269.60	6,452.5	-1,495.00	-959.2	-3,674.4	3,752.2	0.00	0.00	0.00
10,400.0	90.00	269.60	6,452.5	-1,495.00	-959.9	-3,774.4	3,851.8	0.00	0.00	0.00
10,500.0	90.00	269.60	6,452.5	-1,495.00	-960.6	-3,874.4	3,951.3	0.00	0.00	0.00
10,600.0	90.00	269.60	6,452.5	-1,495.00	-961.3	-3,974.4	4,050.9	0.00	0.00	0.00
10,700.0	90.00	269.60	6,452.5	-1,495.00	-962.0	-4,074.4	4,150.5	0.00	0.00	0.00
10,800.0	90.00	269.60	6,452.5	-1,495.00	-962.7	-4,174.4	4,250.0	0.00	0.00	0.00
10,900.0	90.00	269.60	6,452.5	-1,495.00	-963.4	-4,274.4	4,349.6	0.00	0.00	0.00
11,000.0	90.00	269.60	6,452.5	-1,495.00	-964.1	-4,374.4	4,449.1	0.00	0.00	0.00
11,100.0	90.00	269.60	6,452.5	-1,495.00	-964.8	-4,474.4	4,548.7	0.00	0.00	0.00
11,200.0	90.00	269.60	6,452.5	-1,495.00	-965.5	-4,574.3	4,648.3	0.00	0.00	0.00
11,300.0	90.00	269.60	6,452.5	-1,495.00	-966.2	-4,674.3	4,747.8	0.00	0.00	0.00
11,400.0	90.00	269.60	6,452.5	-1,495.00	-966.9	-4,774.3	4,847.4	0.00	0.00	0.00
11,500.0	90.00	269.60	6,452.5	-1,495.00	-967.6	-4,874.3	4,946.9	0.00	0.00	0.00
11,600.0	90.00	269.60	6,452.5	-1,495.00	-968.3	-4,974.3	5,046.5	0.00	0.00	0.00
11,700.0	90.00	269.60	6,452.5	-1,495.00	-969.0	-5,074.3	5,146.1	0.00	0.00	0.00
11,800.0	90.00	269.60	6,452.5	-1,495.00	-969.7	-5,174.3	5,245.6	0.00	0.00	0.00
11,900.0	90.00	269.60	6,452.5	-1,495.00	-970.5	-5,274.3	5,345.2	0.00	0.00	0.00
12,000.0	90.00	269.60	6,452.5	-1,495.00	-971.2	-5,374.3	5,444.8	0.00	0.00	0.00
12,100.0	90.00	269.60	6,452.5	-1,495.00	-971.9	-5,474.3	5,544.3	0.00	0.00	0.00
12,200.0	90.00	269.60	6,452.5	-1,495.00	-972.6	-5,574.3	5,643.9	0.00	0.00	0.00
12,300.0	90.00	269.60	6,452.5	-1,495.00	-973.3	-5,674.3	5,743.4	0.00	0.00	0.00
12,400.0	90.00	269.60	6,452.5	-1,495.00	-974.0	-5,774.3	5,843.0	0.00	0.00	0.00
12,500.0	90.00	269.60	6,452.5	-1,495.00	-974.7	-5,874.3	5,942.6	0.00	0.00	0.00
12,600.0	90.00	269.60	6,452.5	-1,495.00	-975.4	-5,974.3	6,042.1	0.00	0.00	0.00
12,700.0	90.00	269.60	6,452.5	-1,495.00	-976.1	-6,074.3	6,141.7	0.00	0.00	0.00
12,800.0	90.00	269.60	6,452.5	-1,495.00	-976.8	-6,174.3	6,241.2	0.00	0.00	0.00
12,900.0	90.00	269.60	6,452.5	-1,495.00	-977.5	-6,274.3	6,340.8	0.00	0.00	0.00

Planning Report



Database:	EDM 5000.1 Single User Db	Local Co-ordinate Reference:	Well HUNT FED 8-60 19-24-9
Company:	BISON OIL & GAS II, LLC	TVD Reference:	KB-EST @ 4957.5usft (Original Well Elev)
Project:	WELD COUNTY, COLORADO (NAD 83)	MD Reference:	KB-EST @ 4957.5usft (Original Well Elev)
Site:	SE NE SEC. 19 T8N R60W 6th P.M.	North Reference:	True
Well:	HUNT FED 8-60 19-24-9	Survey Calculation Method:	Minimum Curvature
Wellbore:	ORIGINAL WELLBORE		
Design:	PROPOSAL #1		

Planned Survey										
MD (usft)	Inc (°)	Azi (°)	TVD (usft)	SS (usft)	+N/-S (usft)	+E/-W (usft)	Vertical Section (usft)	Dogleg Rate (°/100usft)	Build Rate (°/100usft)	Turn Rate (°/100usft)
13,000.0	90.00	269.60	6,452.5	-1,495.00	-978.2	-6,374.3	6,440.4	0.00	0.00	0.00
13,100.0	90.00	269.60	6,452.5	-1,495.00	-978.9	-6,474.3	6,539.9	0.00	0.00	0.00
13,200.0	90.00	269.60	6,452.5	-1,495.00	-979.6	-6,574.3	6,639.5	0.00	0.00	0.00
13,300.0	90.00	269.60	6,452.5	-1,495.00	-980.3	-6,674.3	6,739.1	0.00	0.00	0.00
13,400.0	90.00	269.60	6,452.5	-1,495.00	-981.0	-6,774.3	6,838.6	0.00	0.00	0.00
13,500.0	90.00	269.60	6,452.5	-1,495.00	-981.7	-6,874.3	6,938.2	0.00	0.00	0.00
13,600.0	90.00	269.60	6,452.5	-1,495.00	-982.4	-6,974.3	7,037.7	0.00	0.00	0.00
13,700.0	90.00	269.60	6,452.5	-1,495.00	-983.1	-7,074.3	7,137.3	0.00	0.00	0.00
13,800.0	90.00	269.60	6,452.5	-1,495.00	-983.8	-7,174.3	7,236.9	0.00	0.00	0.00
13,900.0	90.00	269.60	6,452.5	-1,495.00	-984.5	-7,274.3	7,336.4	0.00	0.00	0.00
14,000.0	90.00	269.60	6,452.5	-1,495.00	-985.2	-7,374.3	7,436.0	0.00	0.00	0.00
14,100.0	90.00	269.60	6,452.5	-1,495.00	-985.9	-7,474.3	7,535.5	0.00	0.00	0.00
14,200.0	90.00	269.60	6,452.5	-1,495.00	-986.6	-7,574.3	7,635.1	0.00	0.00	0.00
14,300.0	90.00	269.60	6,452.5	-1,495.00	-987.3	-7,674.3	7,734.7	0.00	0.00	0.00
14,400.0	90.00	269.60	6,452.5	-1,495.00	-988.0	-7,774.3	7,834.2	0.00	0.00	0.00
14,500.0	90.00	269.60	6,452.5	-1,495.00	-988.7	-7,874.3	7,933.8	0.00	0.00	0.00
14,600.0	90.00	269.60	6,452.5	-1,495.00	-989.4	-7,974.3	8,033.3	0.00	0.00	0.00
14,700.0	90.00	269.60	6,452.5	-1,495.00	-990.1	-8,074.3	8,132.9	0.00	0.00	0.00
14,800.0	90.00	269.60	6,452.5	-1,495.00	-990.8	-8,174.3	8,232.5	0.00	0.00	0.00
14,900.0	90.00	269.60	6,452.5	-1,495.00	-991.6	-8,274.3	8,332.0	0.00	0.00	0.00
15,000.0	90.00	269.60	6,452.5	-1,495.00	-992.3	-8,374.3	8,431.6	0.00	0.00	0.00
15,100.0	90.00	269.60	6,452.5	-1,495.00	-993.0	-8,474.3	8,531.2	0.00	0.00	0.00
15,200.0	90.00	269.60	6,452.5	-1,495.00	-993.7	-8,574.3	8,630.7	0.00	0.00	0.00
15,300.0	90.00	269.60	6,452.5	-1,495.00	-994.4	-8,674.2	8,730.3	0.00	0.00	0.00
15,400.0	90.00	269.60	6,452.5	-1,495.00	-995.1	-8,774.2	8,829.8	0.00	0.00	0.00
15,500.0	90.00	269.60	6,452.5	-1,495.00	-995.8	-8,874.2	8,929.4	0.00	0.00	0.00
15,600.0	90.00	269.60	6,452.5	-1,495.00	-996.5	-8,974.2	9,029.0	0.00	0.00	0.00
15,700.0	90.00	269.60	6,452.5	-1,495.00	-997.2	-9,074.2	9,128.5	0.00	0.00	0.00
15,800.0	90.00	269.60	6,452.5	-1,495.00	-997.9	-9,174.2	9,228.1	0.00	0.00	0.00
15,900.0	90.00	269.60	6,452.5	-1,495.00	-998.6	-9,274.2	9,327.6	0.00	0.00	0.00
16,000.0	90.00	269.60	6,452.5	-1,495.00	-999.3	-9,374.2	9,427.2	0.00	0.00	0.00
16,100.0	90.00	269.60	6,452.5	-1,495.00	-1,000.0	-9,474.2	9,526.8	0.00	0.00	0.00
16,200.0	90.00	269.60	6,452.5	-1,495.00	-1,000.7	-9,574.2	9,626.3	0.00	0.00	0.00
EPI: 2664ft FNL & 600ft FWL of Sec 24										
16,256.4	90.00	269.60	6,452.5	-1,495.00	-1,001.1	-9,630.6	9,682.4	0.00	0.00	0.00
EOT TO 269.47° AZ										
16,260.7	90.00	269.47	6,452.5	-1,495.00	-1,001.1	-9,635.0	9,686.8	3.00	0.00	-3.00
16,300.0	90.00	269.47	6,452.5	-1,495.00	-1,001.5	-9,674.2	9,725.9	0.00	0.00	0.00
16,400.0	90.00	269.47	6,452.5	-1,495.00	-1,002.4	-9,774.2	9,825.5	0.00	0.00	0.00
16,500.0	90.00	269.47	6,452.5	-1,495.00	-1,003.4	-9,874.2	9,925.1	0.00	0.00	0.00
BHL: 2665ft FNL & 300ft FWL of Sec 24										
16,556.4	90.00	269.47	6,452.5	-1,495.00	-1,003.9	-9,930.6	9,981.2	0.00	0.00	0.00

Planning Report



Database:	EDM 5000.1 Single User Db	Local Co-ordinate Reference:	Well HUNT FED 8-60 19-24-9
Company:	BISON OIL & GAS II, LLC	TVD Reference:	KB-EST @ 4957.5usft (Original Well Elev)
Project:	WELD COUNTY, COLORADO (NAD 83)	MD Reference:	KB-EST @ 4957.5usft (Original Well Elev)
Site:	SE NE SEC. 19 T8N R60W 6th P.M.	North Reference:	True
Well:	HUNT FED 8-60 19-24-9	Survey Calculation Method:	Minimum Curvature
Wellbore:	ORIGINAL WELLBORE		
Design:	PROPOSAL #1		

Formations					
MD (usft)	TVD (usft)	Name	Lithology	Dip (°)	Dip Direction (°)
490.5	490.5	PIERRE SHALE (BASE FOX HILLS			
3,570.8	3,505.5	PARKMAN			
4,108.5	4,030.5	SUSSEX			
5,230.5	5,128.5	SHANNON			
6,272.5	6,157.5	SHARON SPRINGS SHALE			
6,356.2	6,227.5	NIOBRARA FORMATION			
6,368.9	6,237.5	NIOBRARA A CHALK			
6,529.8	6,347.5	NIOBRARA B CHALK			
6,680.9	6,417.5	NIOBRARA C CHALK			

Plan Annotations				
MD (usft)	TVD (usft)	Local Coordinates		Comment
		+N/-S (usft)	+E/-W (usft)	
0.0	0.0	0.0	0.0	SHL: 1732ft FNL & 360ft FEL of Sec 19
400.0	400.0	0.0	0.0	START NUDGE (2°/100ft BUR)
1,025.0	1,020.1	-64.3	21.8	EOB TO 12.5° INC
4,941.1	4,843.4	-866.9	294.4	END OF TANGENT
5,566.1	5,463.4	-931.2	316.2	EOD TO VERTICAL
5,982.3	5,879.6	-931.2	316.2	KOP (10°/100ft BUR)
6,882.2	6,452.5	-935.2	-256.7	BPI: 2665ft FNL & 600ft FEL of Sec 19
16,256.4	6,452.5	-1,001.1	-9,630.6	EPI: 2664ft FNL & 600ft FWL of Sec 24
16,260.7	6,452.5	-1,001.1	-9,635.0	EOT TO 269.47° AZ
16,556.4	6,452.5	-1,003.9	-9,930.6	BHL: 2665ft FNL & 300ft FWL of Sec 24