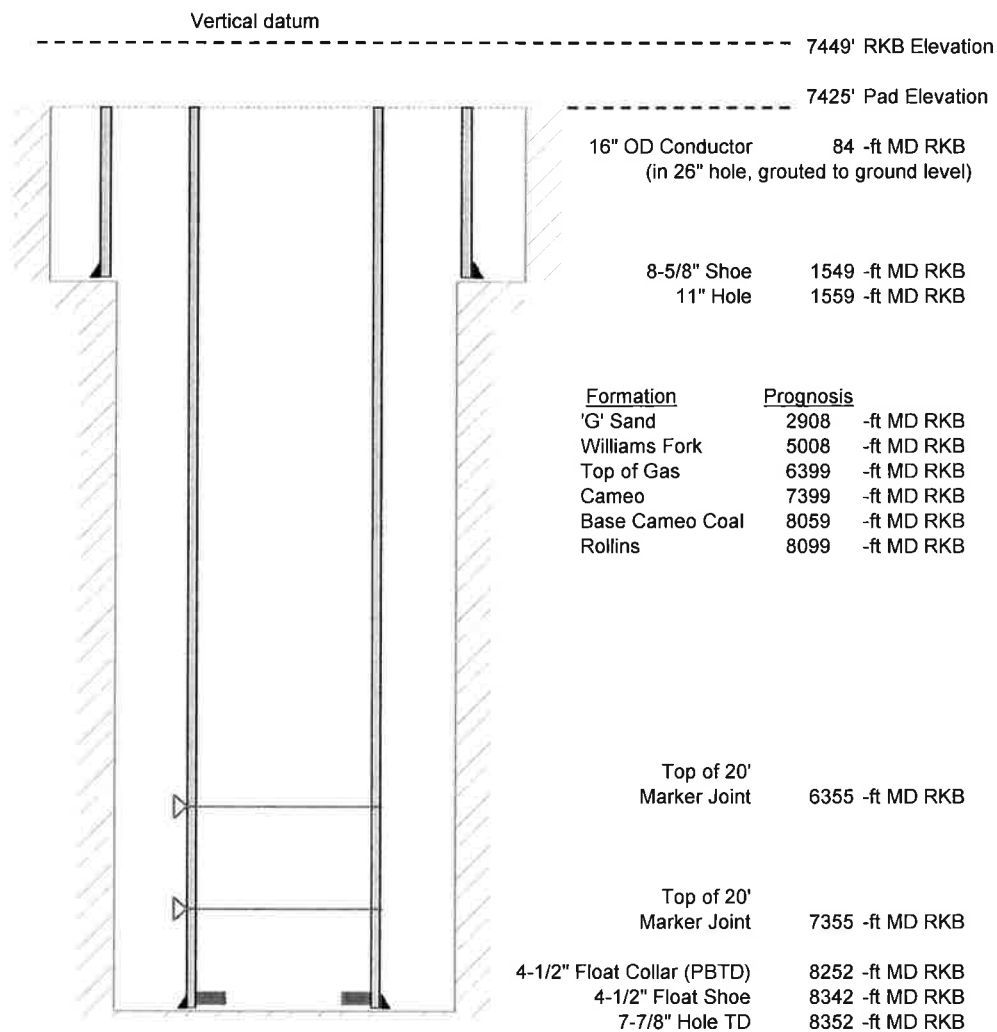


Laramie Energy, LLC  
 Bruton 19-12E  
 Slot A2  
 H&P 290 (24-ft KB)

API # : 05-077-10365  
 NE/4 NE/4 S30/T9S/R93W/6th PM  
 Mesa County, CO  
 Date of diagram :



#### Cementing details

8-5/8" 24# J55 STC Surface Csg	Lead	Tail
Density (ppg)	12.3	12.8
Volume (sx)	201	107
Yield (cf/sx)	2.45	2.18
Top (ft RKB)	24	1024
Bottom (ft RKB)	1024	1549
Returns (full or partial)	Full	Full

4-1/2" 11.6# Nexteel-80 LTC Prod Csg	Lead	Tail
Density (ppg)	12.5	13.3
Volume (sx)	896	401
Yield (cf/sx)	1.94	1.73
Est Top (ft RKB)	1024	6199
Est Bottom (ft RKB)	6199	8342
Returns (full or partial)		

Displacement
8.3 ppg
129.5 bbls

Other Remarks : Surface-22 bbls cement to surface Production-3  
 bbls spacer to surface