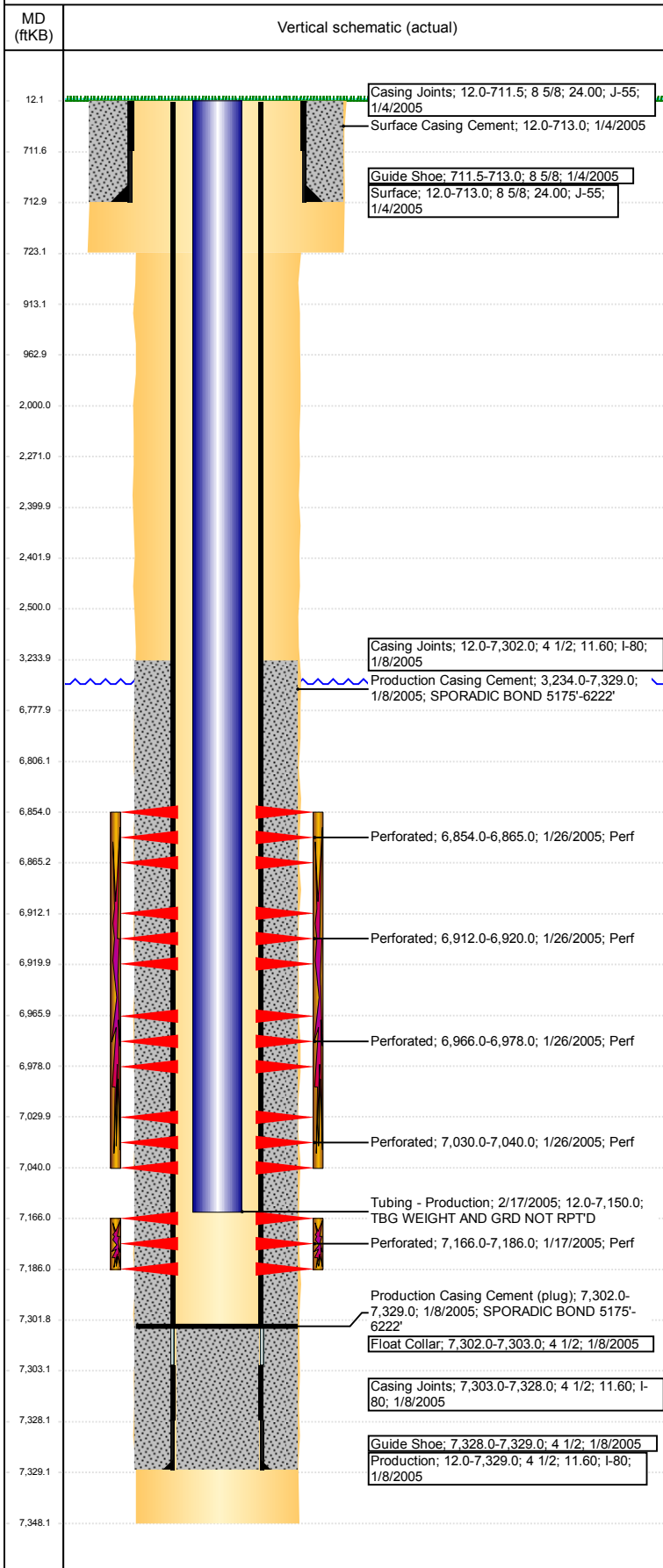


Well Name: SCHNEIDER 4-35

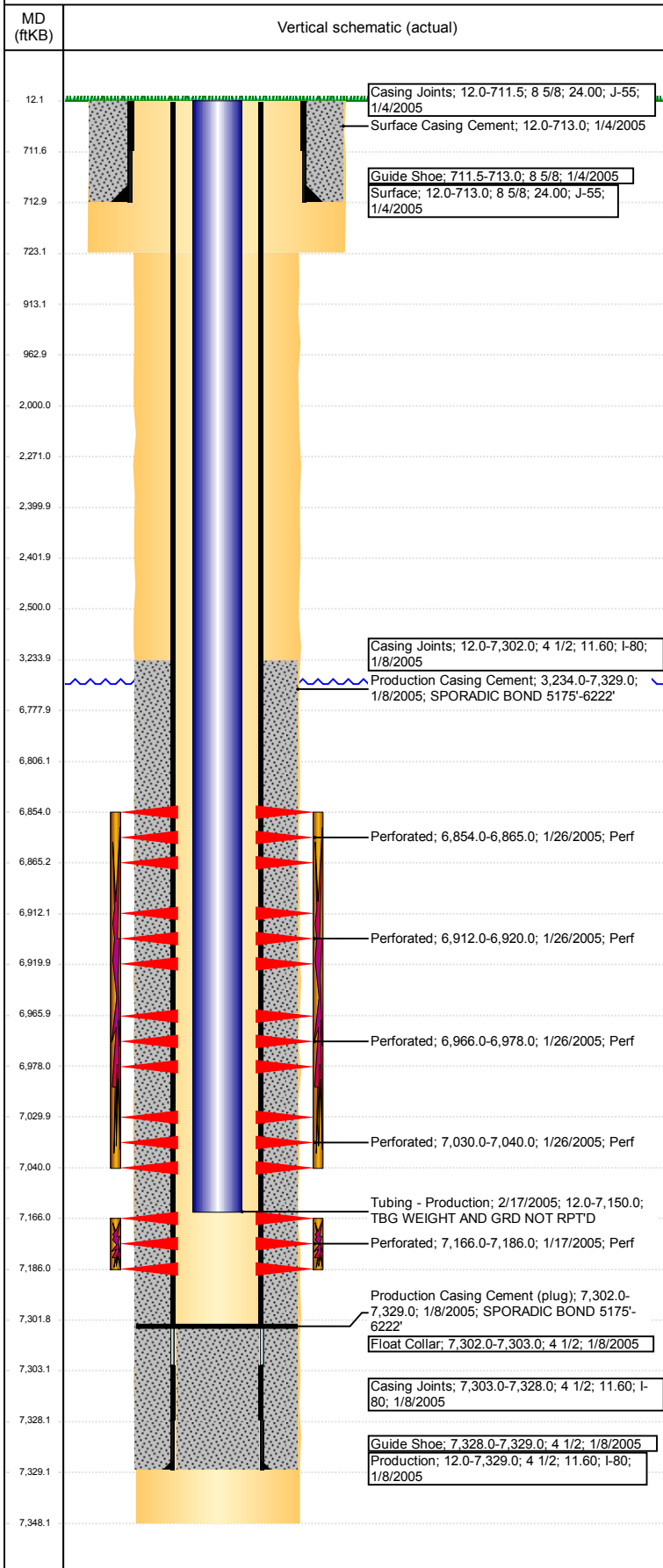
VERTICAL - ORIGINAL HOLE, 10/4/2017 3:42:10 PM



Well Header						
API 05-123-22220	Business Unit DJ BASIN		District 15		Well Config VERTICAL	
Original KB Elevation (ft) 4,922	KB - GL / MSL (ftKB) 12.00		Spud Date 1/3/2005		P & A Date	
Comment						
Directions To Well HWY 257 & RD 52 , E 1/4, S INTO						
Congressional Location						
Quarter 3 NW	Quarter 4 NW	Section 35	Township 5	Twntshp N/S Dir N	Range 67	Range E/W Dir W
Bottom Hole Location						
North-South Distance (ft)		From N or S Line		East-West Distance (ft)		From E or W Line
Plug Back Total Depths						
Date	Depth (ftKB)	Method		Com		
1/8/2005	7,302.0	CASING TALLY		TOP OF FLOAT COLLAR		
1/17/2005	7,276.0	CASED HOLE LOG		DEPTH LOGGER ON CBL		
2/16/2005	7,302.0	TAG		DRILL OUT BRIDGE PLUG & HARD SAND, CLEAN...		
Wellbore Sections						
Section Des		Size (in)		Act Top, MD (ftKB)		Act Btm, MD (ftKB)
SURFACE		12 1/4		12		723
PRODUCTION		7 7/8		723		7,348
Zone Statuses						
Zone Name	Status Date	Status	Fluid Type	Job	Prod Method	
NIOBRARA	2/3/2005	PR	Water	DRILLING/CO...	Flowing	
NIOBRARA	2/21/2005	PR		COMMINGLE...		
NIOBRARA	6/11/2014	PR				
NIOBRARA	3/22/2017	SI				
CODELL	2/3/2005	SI	Water	DRILLING/CO...	Flowing	
CODELL	2/21/2005	PR		COMMINGLE...		
CODELL	6/11/2014	PR				
Casing Strings						
Surface, 713.0ftKB						
Casing Description	Run Date	OD (in)	Wt/Len (l...	Grade	Top, MD (ft...	MD (ftKB)
Surface	1/4/2005	8 5/8	24.00	J-55	12.0	713.0
Production, 7,329.0ftKB						
Casing Description	Run Date	OD (in)	Wt/Len (l...	Grade	Top, MD (ft...	MD (ftKB)
Production	1/8/2005	4 1/2	11.60	I-80	12.0	7,329.0
Cement						
Description				Top Depth (ftKB)		Bottom Depth (ftKB)
Surface Casing Cement				12.0		713.0
Description				Top Depth (ftKB)		Bottom Depth (ftKB)
Production Casing Cement				3,234.0		7,329.0
Description				Top Depth (ftKB)		Bottom Depth (ftKB)
PA Plug - Top of CICR				2,271.0		2,400.0
Description				Top Depth (ftKB)		Bottom Depth (ftKB)
PA Plug - Below CICR				2,402.0		2,500.0
Description				Top Depth (ftKB)		Bottom Depth (ftKB)
PA Plug - Annulus				2,000.0		2,500.0
Description				Top Depth (ftKB)		Bottom Depth (ftKB)
Shoe Plug				12.0		913.0
Description				Top Depth (ftKB)		Bottom Depth (ftKB)
Stub Plug - Attempt				913.0		963.0
Tubing Strings						
Tubing Description	Run Date	String ...	ID (in)	Wt (lb/ft)	Grade	Len (ft)
Tubing - Production	2/17/2005	2 3/8				7,138.00
Set De...						
Tubing Components						
Item Des	OD (in)	Wt (lb/ft)	Grade	Jts	Len (ft)	Btm (ftKB)
EUE 8rd Tubing	2 3/8			235	7,136.00	7,148.0
Seal Nipple	2 3/8			1	1.00	7,149.0
Notched collar	2 3/8			1	1.00	7,150.0
Btm (TVD) (ftKB)						
Other In Hole						
Run Date	Des			OD (in)	Top (ftKB)	Btm (ftKB)
10/2/2017	Cement Retainer			3.99	2,400.0	2,402.0
10/2/2017	Cast Iron Bridge Plug w/ 2 SX Cement			3.99	6,778.0	6,806.0

Well Name: SCHNEIDER 4-35

VERTICAL - ORIGINAL HOLE, 10/4/2017 3:42:11 PM



Logs			
Date	Type	Top, MD (ftKB)	Btm, MD (ftKB)
1/8/2005	COMPENSATED DENSITY	4,600.0	7,315.0
1/8/2005	INDUCTION	713.0	7,335.0
1/17/2005	CBL/CCL/GR	3,100.0	7,276.0
1/17/2005	PERFORATION	3,100.0	7,276.0
1/26/2005	COLLAR LOCATOR	6,770.0	7,100.0

Perforation Data					
Linked Zone	Bnch/St g	Sum of Entered Shot Total	Top (ftKB)	Btm (ftKB)	Date
NIOBRARA, ORIGINAL HOLE	A	0	2,500.00	2,500.00	10/2/2017
NIOBRARA, ORIGINAL HOLE	A	44	6,854.00	6,865.00	1/26/2005
NIOBRARA, ORIGINAL HOLE	A	32	6,912.00	6,920.00	1/26/2005
NIOBRARA, ORIGINAL HOLE	B	48	6,966.00	6,978.00	1/26/2005
NIOBRARA, ORIGINAL HOLE	C	40	7,030.00	7,040.00	1/26/2005
CODELL, ORIGINAL HOLE		60	7,166.00	7,186.00	1/17/2005
Total (Sum)		224			

Stimulation Intervals		
Start Date	Primary Job Type	
1/21/2005	DRILLING/COMPLETION - ORIGINAL	
Technical Result	Tech Result Details	Tech Result Note
Comment		
Start Date	Primary Job Type	
1/28/2005	DRILLING/COMPLETION - ORIGINAL	
Technical Result	Tech Result Details	Tech Result Note
Comment		