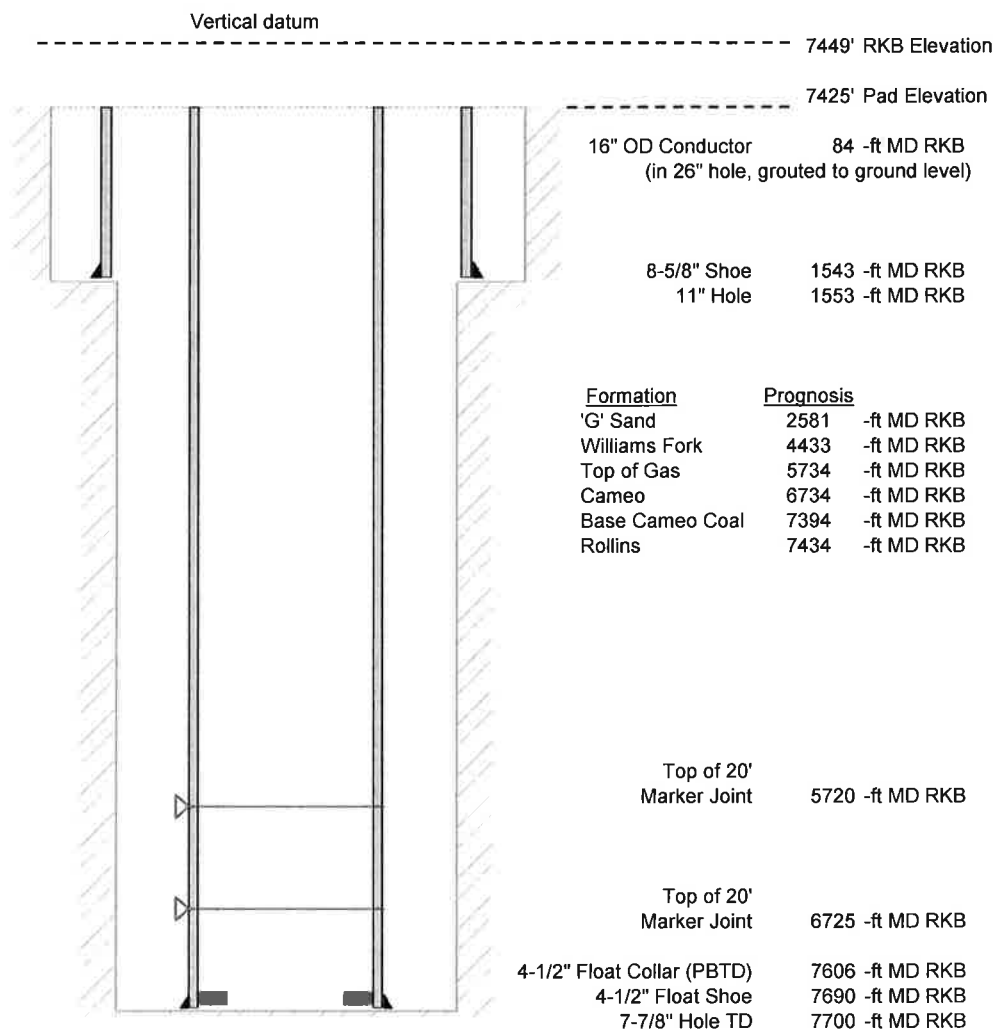


Laramie Energy, LLC
 Bruton 30-01E
 Slot B8
 H&P 290 (24-ft KB)

API # : 05-077-10371
 NE/4 NE/4 S30/T9S/R93W/6th PM
 Mesa County, CO
 Date of diagram : 6/3/2017



Cementing details

8-5/8" 24# J55 STC Surface Csg	Lead	Tail
Density (ppg)	12.3	12.8
Volume (sx)	191	107
Yield (cf/sx)	2.45	2.18
Top (ft RKB)	24	1024
Bottom (ft RKB)	1024	1543
Returns (full or partial)	Full	Full

4-1/2" 11.6# Nexteel-80 LTC Prod Csg	Lead	Tail
Density (ppg)	12.5	13.3
Volume (sx)	778	405
Yield (cf/sx)	1.94	1.73
Est Top (ft RKB)	1024	5534
Est Bottom (ft RKB)	5534	7690
Returns (full or partial)	Full	Full

Displacement
8.3 ppg
119 bbls

Other Remarks : Surface cement - 6 bbls of cement to surface Production
 Cement - 4 bbls of spacer back to surface