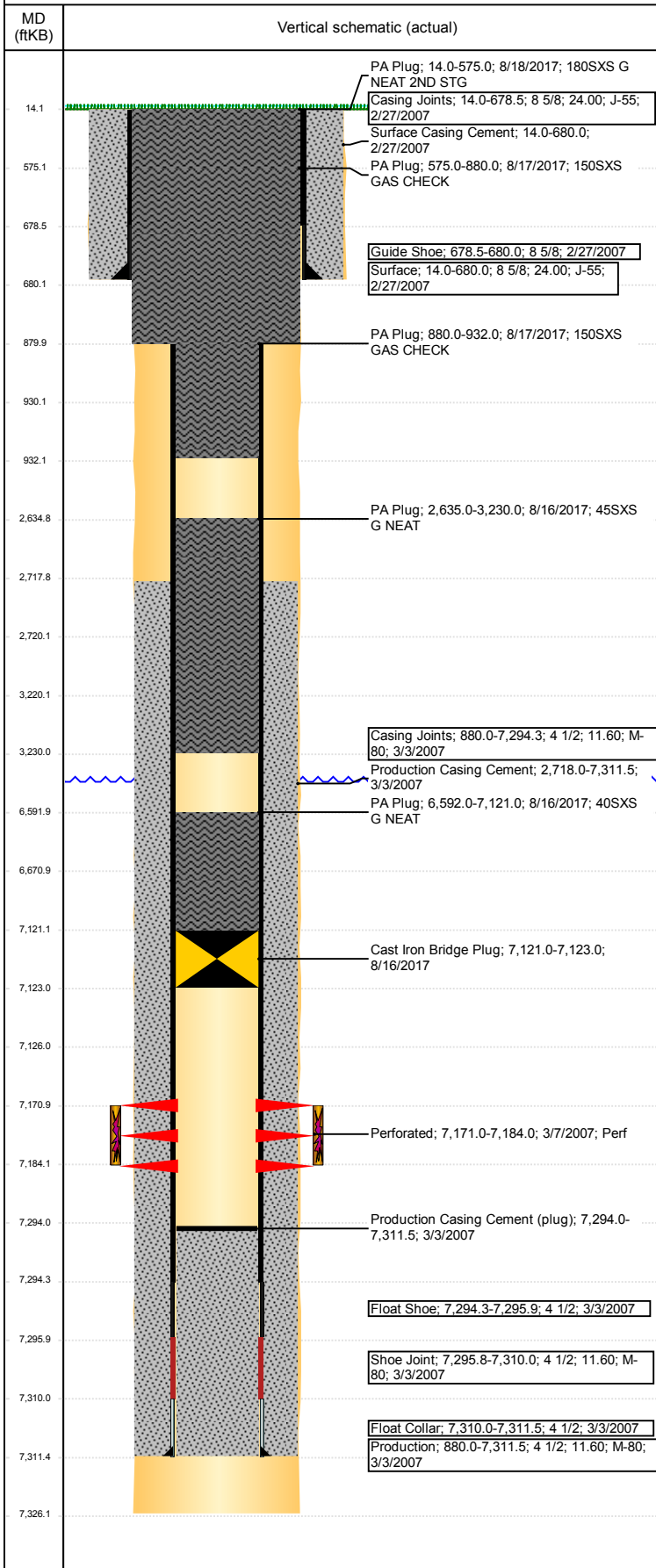


Well Name: BOOTH USX EE25-17

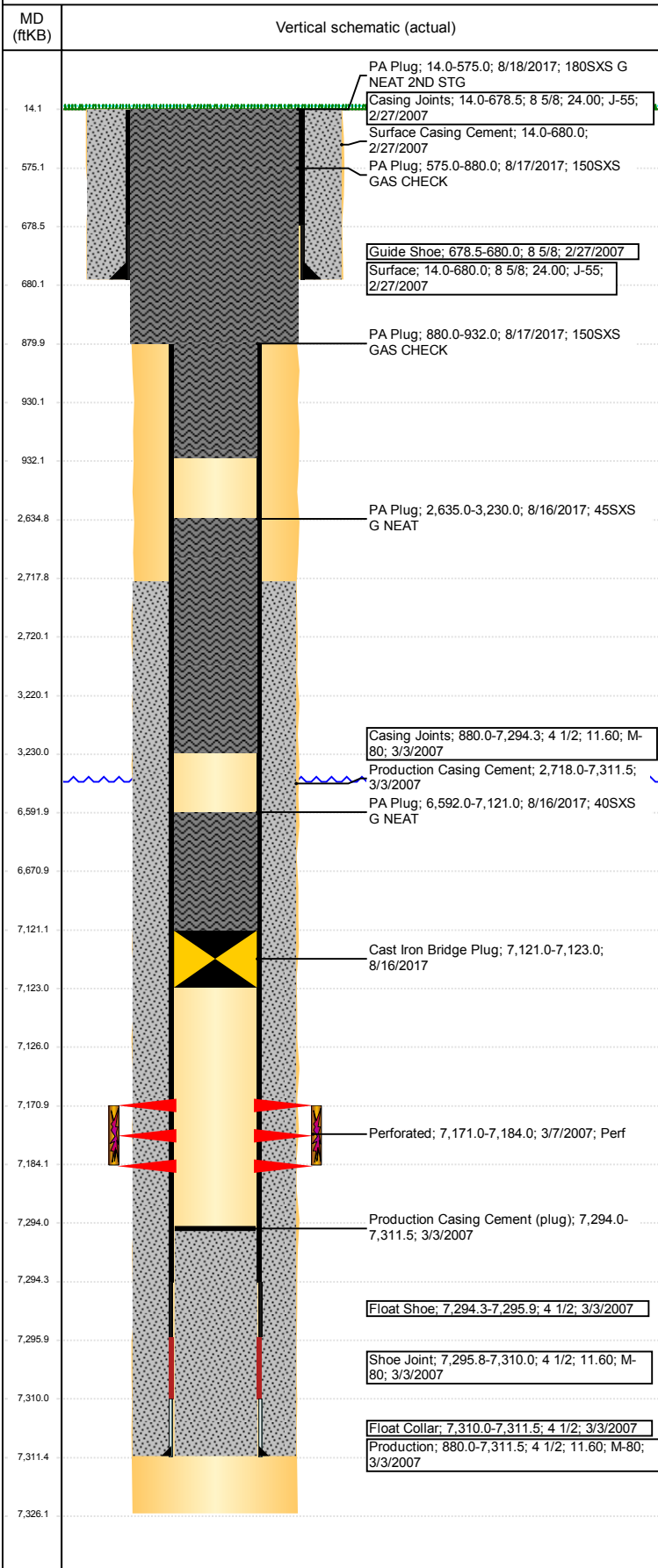
VERTICAL - ORIGINAL HOLE, 10/4/2017 10:10:49 AM



Well Header						
API 05-123-24719	Business Unit DJ BASIN		District 15		Well Config VERTICAL	
Original KB Elevation (ft) 4,886	KB - GL / MSL (ftKB) 14.00		Spud Date 2/26/2007		P & A Date 8/18/2017	
Comment						
Directions To Well WCR 49 & WCR 76, N 0.4, NW 0.4 INTO						
Congressional Location						
Quarter 3 SW	Quarter 4 NE	Section 25	Township 7	Twnshp N/S Dir N	Range 65	Range E/W Dir W
Bottom Hole Location						
North-South Distance (ft)		From N or S Line		East-West Distance (ft)		From E or W Line
Plug Back Total Depths						
Date	Depth (ftKB)	Method		Com		
3/3/2007	7,294.4	CASING TALLY		TOP OF FLOAT COLLAR		
3/7/2007	7,285.0	CASED HOLE LOG		DEPTH LOGGER ON CBL		
6/28/2007	7,294.0	TAG		CLEAN OUT		
Wellbore Sections						
Section Des		Size (in)		Act Top, MD (ftKB)		Act Btm, MD (ftKB)
SURFACE		12 1/4		14		680
PRODUCTION		7 7/8		680		7,326
Zone Statuses						
Zone Name	Status Date	Status	Fluid Type	Job	Prod Method	
CODELL	5/7/2007	PR	Water	DRILLING/CO...	Flowing	
CODELL	8/8/2011	PR				
CODELL	5/9/2017	SI				
CODELL	8/18/2017	P&A				
				ABANDON WE...		
Casing Strings						
Surface, 680.0ftKB						
Casing Description	Run Date	OD (in)	Wt/Len (l...	Grade	Top, MD (ft...	MD (ftKB)
Surface	2/27/2007	8 5/8	24.00	J-55	14.0	680.0
Production, 7,311.5ftKB						
Casing Description	Run Date	OD (in)	Wt/Len (l...	Grade	Top, MD (ft...	MD (ftKB)
Production	3/3/2007	4 1/2	11.60	M-80	14.0	7,311.5
Cement						
Description				Top Depth (ftKB)		Bottom Depth (ftKB)
Surface Casing Cement				14.0		680.0
Description				Top Depth (ftKB)		Bottom Depth (ftKB)
Production Casing Cement				2,718.0		7,311.5
Description				Top Depth (ftKB)		Bottom Depth (ftKB)
Cement Plug				6,671.0		7,121.0
Description				Top Depth (ftKB)		Bottom Depth (ftKB)
Balance Plug				2,720.0		3,220.0
Description				Top Depth (ftKB)		Bottom Depth (ftKB)
Balance Plug				880.0		930.0
Description				Top Depth (ftKB)		Bottom Depth (ftKB)
Balance Plug				14.0		880.0
Description				Top Depth (ftKB)		Bottom Depth (ftKB)
PA Plug				6,592.0		7,121.0
Description				Top Depth (ftKB)		Bottom Depth (ftKB)
PA Plug				2,635.0		3,230.0
Description				Top Depth (ftKB)		Bottom Depth (ftKB)
PA Plug				880.0		932.0
Description				Top Depth (ftKB)		Bottom Depth (ftKB)
PA Plug				575.0		880.0
Description				Top Depth (ftKB)		Bottom Depth (ftKB)
PA Plug				14.0		575.0
Tubing Strings						
Tubing Description	Run Date	String...	ID (in)	Wt (lb/ft)	Grade	Len (ft)
Tubing - Production	6/28/2007	2 3/8	2.00	4.70	J-55	7,149.95
Set De...						
Other In Hole						
Run Date	Des			OD (in)	Top (ftKB)	Btm (ftKB)
7/7/2017	Cast Iron Bridge Plug			3.99	7,121.0	7,126.0
8/16/2017	Cast Iron Bridge Plug			3.99	7,121.0	7,123.0
Logs						
Date	Type			Top, MD (ftKB)	Btm, MD (ftKB)	
3/3/2007	COMPENSATED DENSITY			2,000.0	7,305.0	

Well Name: BOOTH USX EE25-17

VERTICAL - ORIGINAL HOLE, 10/4/2017 10:10:49 AM



Logs			
Date	Type	Top, MD (ftKB)	Btm, MD (ftKB)
3/3/2007	INDUCTION	680.0	7,325.0
3/7/2007	CBL/CCL/GR	2,600.0	7,284.0
8/17/2017	GYRO	0.0	7,100.0

Perforation Data					
Linked Zone	Bnch/St g	Sum of Entered Shot Total	Top (ftKB)	Btm (ftKB)	Date
CODELL, ORIGINAL HOLE		52	7,171.00	7,184.00	3/7/2007
Total (Sum)		52			

Stimulation Intervals		
Start Date	Primary Job Type	
3/28/2007	DRILLING/COMPLETION - ORIGINAL	
Technical Result	Tech Result Details	Tech Result Note

Comment		
FRAC'D VIA 2 3/8" DEADSTRING		
Inline denso < 0.2 ppg, Pump issues.		
Start Date	Primary Job Type	
3/28/2007	DRILLING/COMPLETION - ORIGINAL	
Technical Result	Tech Result Details	Tech Result Note

Comment		
FRAC'D VIA 2 3/8" DEADSTRING		
Inline denso < 0.2 ppg, Pump issues.		