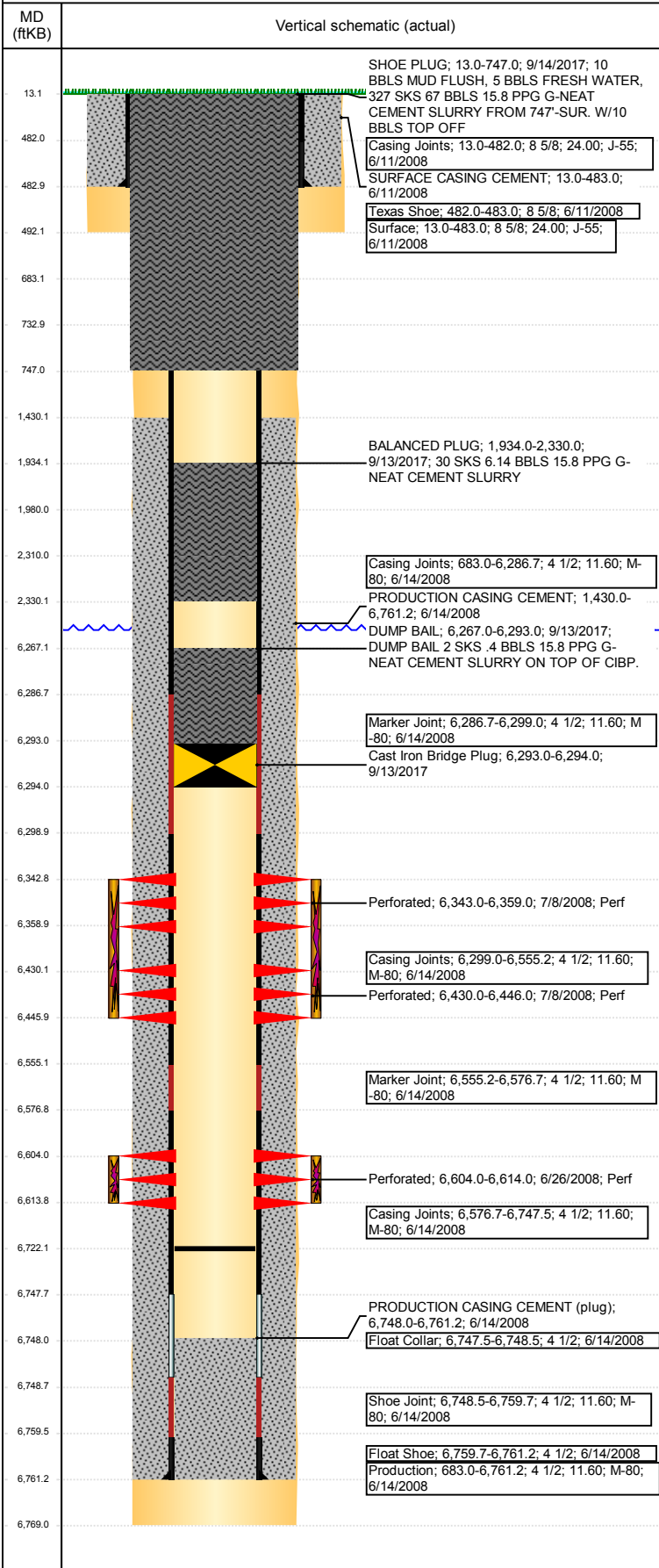


Well Name: WELLS RANCH USX BB11-10

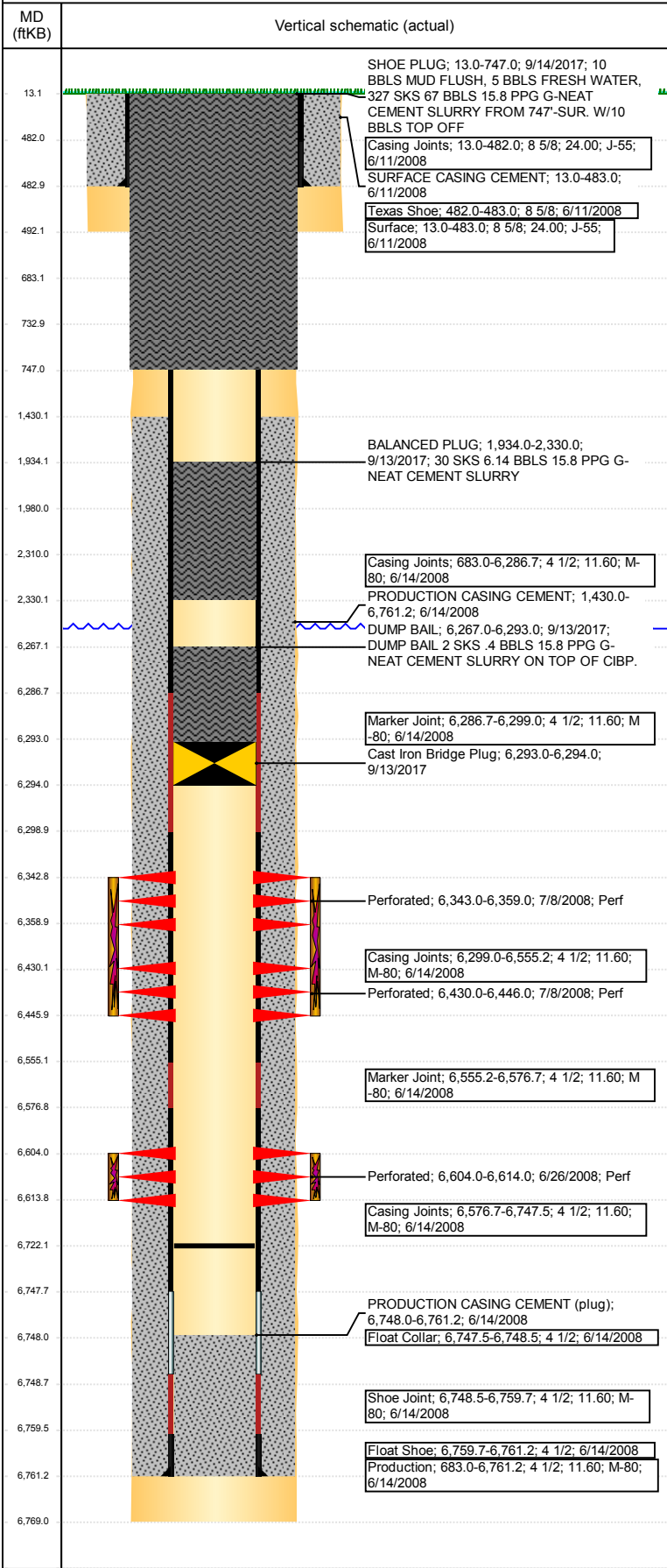
VERTICAL - ORIGINAL HOLE, 10/2/2017 3:10:32 PM



Well Header							
API	05-123-26756	Business Unit	DJ BASIN	District	15	Well Config	VERTICAL
Original KB Elevation (ft)	4,675	KB - GL / MSL (ftKB)	13.00	Spud Date	6/11/2008	P & A Date	9/14/2017
Comment							
Directions To Well							
WCR 68 & WCR 67, EAST 0.2, SOUTH 2.75 MILE TO COW CAMP, EAST 0.2, SOUTH 0.5, SOUTHEAST 0.4, SOUTH 1.6 MILE, NORTHEAST 0.5, WEST 0.1 INTO LOCATION.							
Congressional Location							
Quarter 3	Quarter 4	Section	Township	Twntshp N/S Dir	Range	Range E/W Dir	
NW	SE	11	5	N	63	W	
Bottom Hole Location							
North-South Distance (ft)		From N or S Line		East-West Distance (ft)		From E or W Line	
Plug Back Total Depths							
Date	Depth (ftKB)	Method		Com			
6/14/2008	6,748.5	CASING TALLY		APPROX TOP OF FLOAT COLLAR			
6/24/2008	6,717.0	CASED HOLE LOG		DEPTH LOGGER ON CBL			
8/7/2008	6,722.0	TUBING TALLY					
Wellbore Sections							
Section Des		Size (in)	Act Top, MD (ftKB)	Act Btm, MD (ftKB)			
SURFACE		12 1/4	13	492			
PRODUCTION		7 7/8	492	6,769			
Zone Statuses							
Zone Name	Status Date	Status	Fluid Type	Job	Prod Method		
NIOBRARA	7/10/2008	PR		DRILLING/CO...			
NIOBRARA	9/13/2017	P&A		ABANDON WE...			
CODELL	7/10/2008	PR		DRILLING/CO...			
CODELL	9/13/2017	P&A		ABANDON WE...			
Casing Strings							
Surface, 483.0ftKB							
Casing Description	Run Date	OD (in)	Wt/Len (l...)	Grade	Top, MD (ft...)	MD (ftKB)	
Surface	6/11/2008	8 5/8	24.00	J-55	13.0	483.0	
Production, 6,761.2ftKB							
Casing Description	Run Date	OD (in)	Wt/Len (l...)	Grade	Top, MD (ft...)	MD (ftKB)	
Production	6/14/2008	4 1/2	11.60	M-80	13.0	6,761.2	
Cement							
Description	Top Depth (ftKB)				Bottom Depth (ftKB)		
SURFACE CASING CEMENT	13.0				483.0		
Description	Top Depth (ftKB)				Bottom Depth (ftKB)		
PRODUCTION CASING CEMENT	1,430.0				6,761.2		
Description	Top Depth (ftKB)				Bottom Depth (ftKB)		
Dump Bail	6,267.0				6,293.0		
Description	Top Depth (ftKB)				Bottom Depth (ftKB)		
Balance Plug	1,980.0				2,310.0		
Description	Top Depth (ftKB)				Bottom Depth (ftKB)		
Balance Plug	683.0				733.0		
Description	Top Depth (ftKB)				Bottom Depth (ftKB)		
Shoe Plug	13.0				683.0		
Description	Top Depth (ftKB)				Bottom Depth (ftKB)		
DUMP BAIL	6,267.0				6,293.0		
Description	Top Depth (ftKB)				Bottom Depth (ftKB)		
BALANCED PLUG	1,934.0				2,330.0		
Description	Top Depth (ftKB)				Bottom Depth (ftKB)		
SHOE PLUG	13.0				747.0		
Tubing Strings							
Tubing Description	Run Date	String...	ID (in)	Wt (lb/ft)	Grade	Len (ft)	Set De...
Tubing - Production	8/8/2008	2 3/8	2.00	4.70	J-55	6,575.	25
Other In Hole							
Run Date	Des		OD (in)	Top (ftKB)	Btm (ftKB)		
9/13/2017	Cast Iron Bridge Plug		3.99	6,293.0	6,294.0		
Logs							
Date	Type			Top, MD (ftKB)	Btm, MD (ftKB)		
6/14/2008	Caliper/Comp. Density/Neutron/GR/SP/ML			2,580.0	6,765.0		
6/14/2008	DIL/GR/SP/Caliper			482.0	6,765.0		
6/24/2008	CBL/CCL/GR			1,360.0	6,710.0		

Well Name: WELLS RANCH USX BB11-10

VERTICAL - ORIGINAL HOLE, 10/2/2017 3:10:33 PM



Logs			
Date	Type	Top, MD (ftKB)	Btm, MD (ftKB)
7/10/2015	GYRO	13.0	6,500.0

Perforation Data					
Linked Zone	Bnch/St g	Sum of Entered Shot Total	Top (ftKB)	Btm (ftKB)	Date
NIOBRARA, ORIGINAL HOLE	A	64	6,343.00	6,359.00	7/8/2008
NIOBRARA, ORIGINAL HOLE	B	64	6,430.00	6,446.00	7/8/2008
CODELL, ORIGINAL HOLE		40	6,604.00	6,614.00	6/26/2008
Total (Sum)		168			

Stimulation Intervals		
Start Date	Primary Job Type	
7/8/2008	DRILLING/COMPLETION - ORIGINAL	
Technical Result	Tech Result Details	Tech Result Note
Success	According to Plan	

Comment
 PRE-ISIP = 3064 PSI, 5-MIN = 2741 PSI. 11 OF 40 PERFS OPEN, 222 NWB FRICTION, 285 PSI PERF FRICTION, AND 750 PSI TOTAL FRICTION. TREATMENT EXHIBITED A SLIGHTLY NEGATIVE TREND THROUGHOUT THE SAND LADEN STAGES OF THE TREATMENT. POST JOB ISIP = 3041 PSI, 5-MIN = 2932 PSI.

Start Date	Primary Job Type	
7/8/2008	DRILLING/COMPLETION - ORIGINAL	
Technical Result	Tech Result Details	Tech Result Note
Success	According to Plan	

Comment
 DUE TO ISSUES ON THE WR USX AA 11-16 CONCURRENT TREATMENT WAS NOT ACCOMPLISHED. SLICKWATER PAD- ISIP (213 BBL) = 2999 PSI. POST ISIP = 3059 PSI, 5-MIN = 2908 PSI. TURN ON IN 19 MINUTES 2400 PSI.

Start Date	Primary Job Type	
7/8/2008	DRILLING/COMPLETION - ORIGINAL	
Technical Result	Tech Result Details	Tech Result Note

Comment
 DUE TO ISSUES ON THE WR USX AA 11-16 CONCURRENT TREATMENT WAS NOT ACCOMPLISHED. SLICKWATER PAD- ISIP (213 BBL) = 2999 PSI. POST ISIP = 3059 PSI, 5-MIN = 2908 PSI. TURN ON IN 19 MINUTES 2400 PSI.