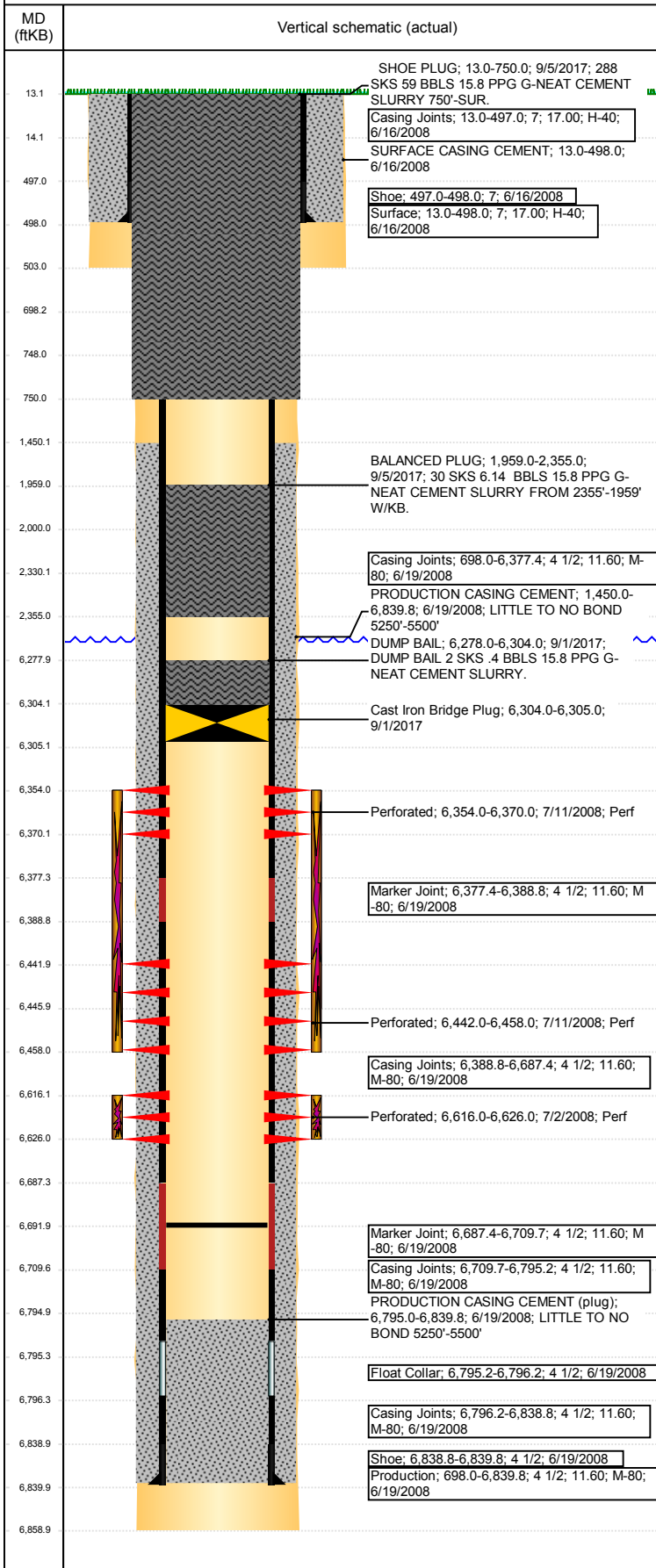


Well Name: WELLS RANCH USX BB11-02

VERTICAL - ORIGINAL HOLE, 10/2/2017 3:04:50 PM



Well Header

API 05-123-26755	Business Unit DJ BASIN	District 15	Well Config VERTICAL
Original KB Elevation (ft) 4,689	KB - GL / MSL (ftKB) 13.00	Spud Date 6/16/2008	P & A Date 9/5/2017

Comment

TD DISCREPANCY: DRILLER'S TD AND STATE RPT 6776', LOGGERS TD 6859', PROD CSG DEPTH 6839'

Directions To Well

WR USX BB11-02: WCR 68 & 67, E .2, S 2.75 TO COW CAMP, E .2, S .5, SE .4, S 1.6, NE .5, NW INTO LOCATION.

Congressional Location

Quarter 3 NW	Quarter 4 NE	Section 11	Township 5	Twntshp N/S Dir N	Range 63	Range E/W Dir W
-----------------	-----------------	---------------	---------------	----------------------	-------------	--------------------

Bottom Hole Location

North-South Distance (ft)	From N or S Line	East-West Distance (ft)	From E or W Line
---------------------------	------------------	-------------------------	------------------

Plug Back Total Depths

Date	Depth (ftKB)	Method	Com
6/19/2008	6,795.0	CASING TALLY	TOP OF FLOAT COLLAR
6/26/2008	6,685.0	CASED HOLE LOG	DEPTH LOGGER ON CBL
10/17/2008	6,692.0	TUBING TALLY	DRILL CIFTF W/ SHOE AND CHASE DOWN TO 66...

Wellbore Sections

Section Des	Size (in)	Act Top, MD (ftKB)	Act Btm, MD (ftKB)
SURFACE	9 7/8	13	503
PRODUCTION	6 1/4	503	6,859

Zone Statuses

Zone Name	Status Date	Status	Fluid Type	Job	Prod Method
NIOBRARA	7/14/2008	PR		DRILLING/CO...	
NIOBRARA	9/1/2017	P&A		ABANDON WE...	
CODELL	7/14/2008	PR		DRILLING/CO...	
CODELL	9/1/2017	P&A		ABANDON WE...	

Casing Strings

Surface, 498.0ftKB

Casing Description	Run Date	OD (in)	Wt/Len (l...)	Grade	Top, MD (ft...)	MD (ftKB)
Surface	6/16/2008	7	17.00	H-40	13.0	498.0

Production, 6,839.8ftKB

Casing Description	Run Date	OD (in)	Wt/Len (l...)	Grade	Top, MD (ft...)	MD (ftKB)
Production	6/19/2008	4 1/2	11.60	M-80	13.0	6,839.8

Cement

Description	Top Depth (ftKB)	Bottom Depth (ftKB)
SURFACE CASING CEMENT	13.0	498.0
PRODUCTION CASING CEMENT	1,450.0	6,839.8
Dump Bail	6,278.0	6,304.0
Balance Plug	2,000.0	2,330.0
Balance Plug	698.0	748.0
Shoe Plug	13.0	698.0
DUMP BAIL	6,278.0	6,304.0
BALANCED PLUG	1,959.0	2,355.0
SHOE PLUG	13.0	750.0

Tubing Strings

Tubing Description	Run Date	String...	ID (in)	Wt (lb/ft)	Grade	Len (ft)	Set De...
Tubing - Production	10/20/2008	2 3/8	2.00	4.70	J-55	6,586.94	

Other In Hole

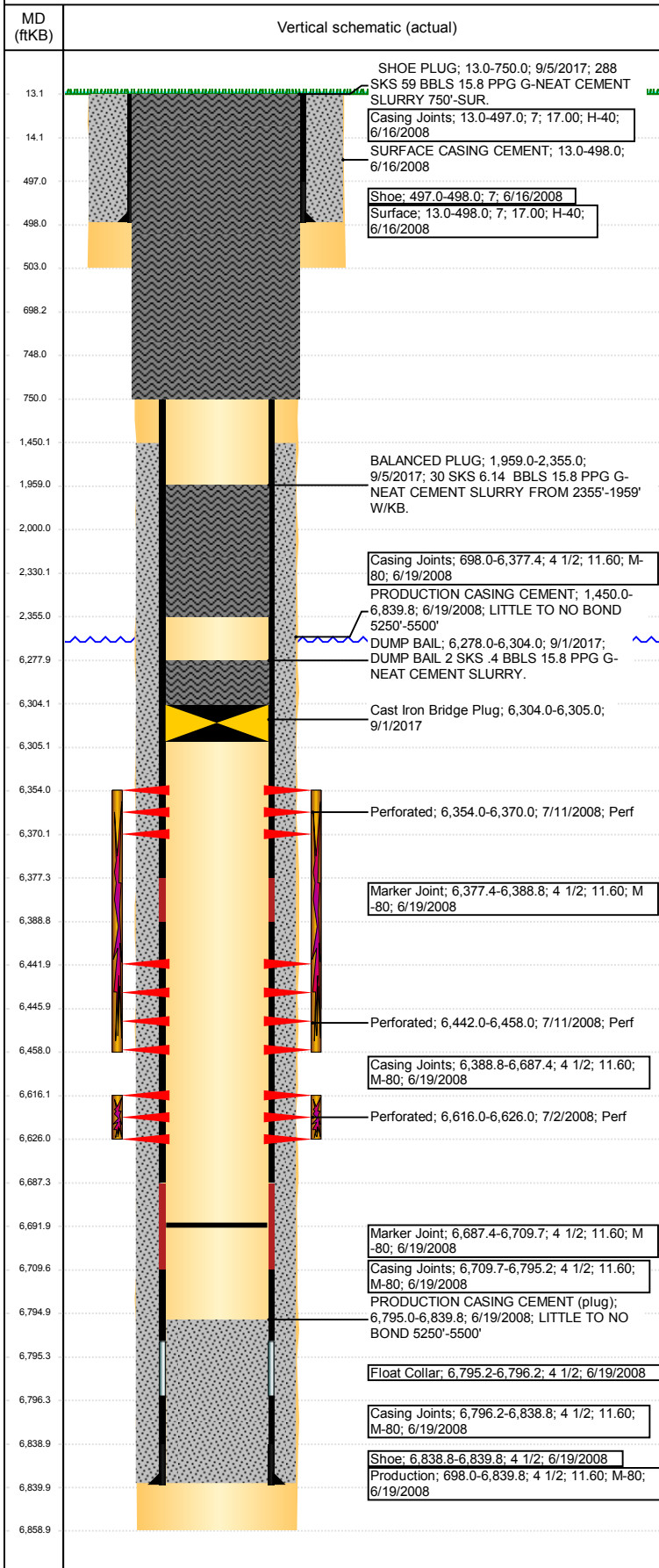
Run Date	Des	OD (in)	Top (ftKB)	Btm (ftKB)
9/1/2017	Cast Iron Bridge Plug	3.99	6,304.0	6,305.0

Logs

Date	Type	Top, MD (ftKB)	Btm, MD (ftKB)
6/19/2008	Caliper/Comp. Density/Neutron/GR/SP/ML	2,640.0	6,749.0
6/19/2008	DIL/GR/SP/Caliper	498.0	6,769.0
6/26/2008	CBL/CCL/GR	1,350.0	6,678.0

Well Name: WELLS RANCH USX BB11-02

VERTICAL - ORIGINAL HOLE, 10/2/2017 3:04:51 PM



Logs			
Date	Type	Top, MD (ftKB)	Btm, MD (ftKB)
7/6/2015	GYRO	13.0	6,500.0

Perforation Data					
Linked Zone	Bnch/St g	Sum of Entered Shot Total	Top (ftKB)	Btm (ftKB)	Date
NIORARA, ORIGINAL HOLE	A	64	6,354.00	6,370.00	7/11/2008
NIORARA, ORIGINAL HOLE	B	64	6,442.00	6,458.00	7/11/2008
CODELL, ORIGINAL HOLE		40	6,616.00	6,626.00	7/2/2008
Total (Sum)		168			

Stimulation Intervals		
Start Date	Primary Job Type	
7/11/2008	DRILLING/COMPLETION - ORIGINAL	
Technical Result	Tech Result Details	Tech Result Note
Success	According to Plan	

Comment
PRE-ISIP = 2988 PSI, 5-MIN = 2510 PSI. 17 OF 40 PERFS OPEN, 340 NWB FRICTION, 149 PSI PERF FRICTION, AND 766 PSI TOTAL FRICTION. TREATMENT USED NEW SURFACTANT (WOLFCO - SPF-90). TREATMENT EXHIBITED A SLIGHT NEGATIVE TREND (NOLTE= - 0.024). POST JOB ISIP = 3021 PSI, 5-MIN = 2947 PSI.

Start Date	Primary Job Type	
7/11/2008	DRILLING/COMPLETION - ORIGINAL	
Technical Result	Tech Result Details	Tech Result Note
Success	According to Plan	

Comment
SLICKWATER PAD- ISIP (147 BBL) = 3090 PSI. ISSUES ON THE BB 11-07 CAUSED THE NIOBRARA TO BE FRAC'D ONLY IN CONCURRENCE WITH THE 11-08. BOTH THESE TREATMENT'S USED NEW SURFACTANT (WOLFCO - SPF-90). TREATMENT EXHIBITED A FLAT TREND. EARLY ISSUES DURING 1.0 PPG WITH STAGING INTO SAND AND PUMPS KICKING OUT. POST ISIP = 3063 PSI, 5-MIN = 2945 PSI. TURN ON IN 59 MINUTES 2800 PSI.

Start Date	Primary Job Type	
7/11/2008	DRILLING/COMPLETION - ORIGINAL	
Technical Result	Tech Result Details	Tech Result Note

Comment
SLICKWATER PAD- ISIP (147 BBL) = 3090 PSI. ISSUES ON THE BB 11-07 CAUSED THE NIOBRARA TO BE FRAC'D ONLY IN CONCURRENCE WITH THE 11-08. BOTH THESE TREATMENT'S USED NEW SURFACTANT (WOLFCO - SPF-90). TREATMENT EXHIBITED A FLAT TREND. EARLY ISSUES DURING 1.0 PPG WITH STAGING INTO SAND AND PUMPS KICKING OUT. POST ISIP = 3063 PSI, 5-MIN = 2945 PSI. TURN ON IN 59 MINUTES 2800 PSI.

Start Date	Primary Job Type	
7/11/2008	DRILLING/COMPLETION - ORIGINAL	
Technical Result	Tech Result Details	Tech Result Note

Comment
SLICKWATER PAD- ISIP (147 BBL) = 3090 PSI. ISSUES ON THE BB 11-07 CAUSED THE NIOBRARA TO BE FRAC'D ONLY IN CONCURRENCE WITH THE 11-08. BOTH THESE TREATMENT'S USED NEW SURFACTANT (WOLFCO - SPF-90). TREATMENT EXHIBITED A FLAT TREND. EARLY ISSUES DURING 1.0 PPG WITH STAGING INTO SAND AND PUMPS KICKING OUT. POST ISIP = 3063 PSI, 5-MIN = 2945 PSI. TURN ON IN 59 MINUTES 2800 PSI.