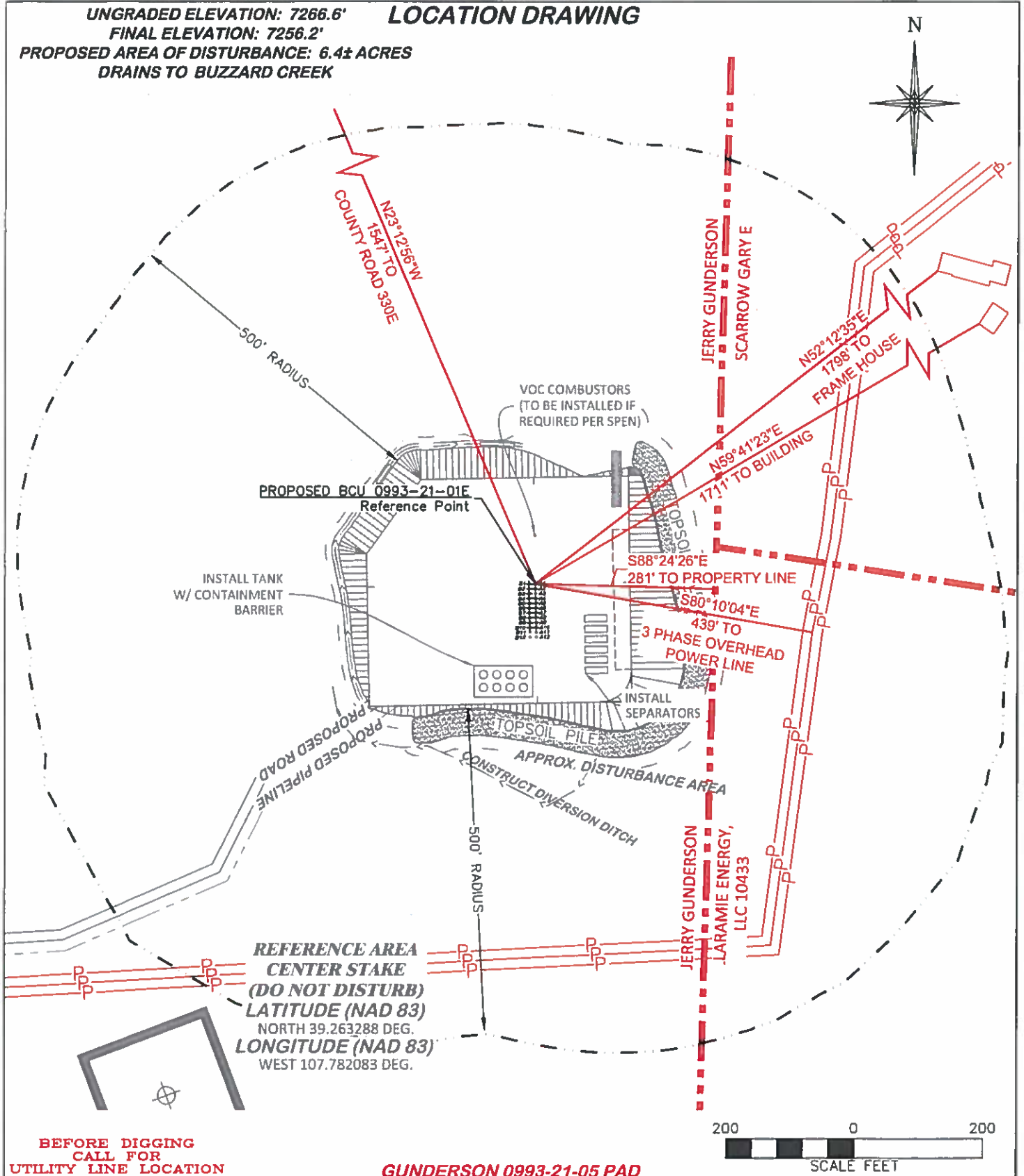


UNGRADED ELEVATION: 7266.6'

FINAL ELEVATION: 7256.2'

PROPOSED AREA OF DISTURBANCE: 6.4± ACRES  
DRAINS TO BUZZARD CREEK

## LOCATION DRAWING



BEFORE DIGGING  
CALL FOR  
UTILITY LINE LOCATION

GUNDERSON 0993-21-05 PAD

LOCATION DRAWING



RIFFIN & ASSOCIATES, INC.

(307) 362-5028

1414 ELK ST., ROCK SPRINGS, WY 82901

DRAWN: 8/8/2017 - DEH

SCALE: 1" = 200'

REVISED: N/A -

DRG JOB No. 21281

07 LOC DWG

LARAMIE ENERGY LLC  
GUNDERSON 0993-21-05  
SWNW, SECTION 21, T. 9 S., R. 93 W., 6th P.M.,  
MESA COUNTY, COLORADO