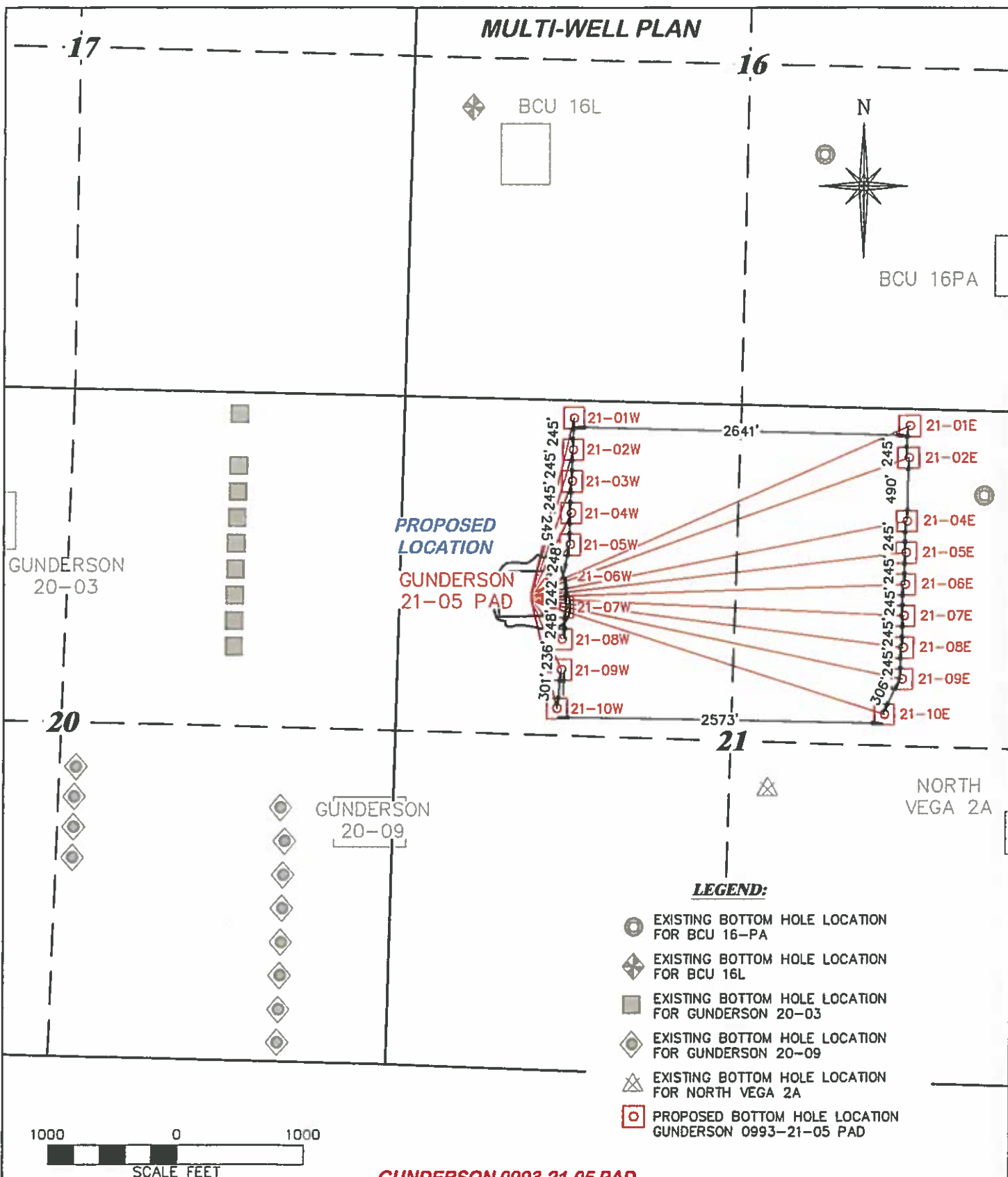


MULTI-WELL PLAN



GUNDERSON 0993-21-05 PAD



RIFFIN & ASSOCIATES, INC.

(307) 362-5028

1414 ELK ST., ROCK SPRINGS, WY 82901

DRAWN: 8/8/2017 - DEH

SCALE: 1" = 1000'

REVISED: N/A -

DRG JOB No. 21281

15 MULTI

MULTI-WELL PLAN

LARAMIE ENERGY LLC

GUNDERSON 0993-21-05

**SECTION 21, T. 9 S., R. 93 W., 6th P.M.,
MESA COUNTY, COLORADO**

**PAD LOCATED IN SWNW OF
SECTION 21, T. 9 S., R. 93 W., 6th P.M.,
MESA COUNTY, COLORADO**