

PHOTO: VIEW FROM CORNER #5 TO LOCATION STAKES

CAMERA ANGLE: EASTERLY

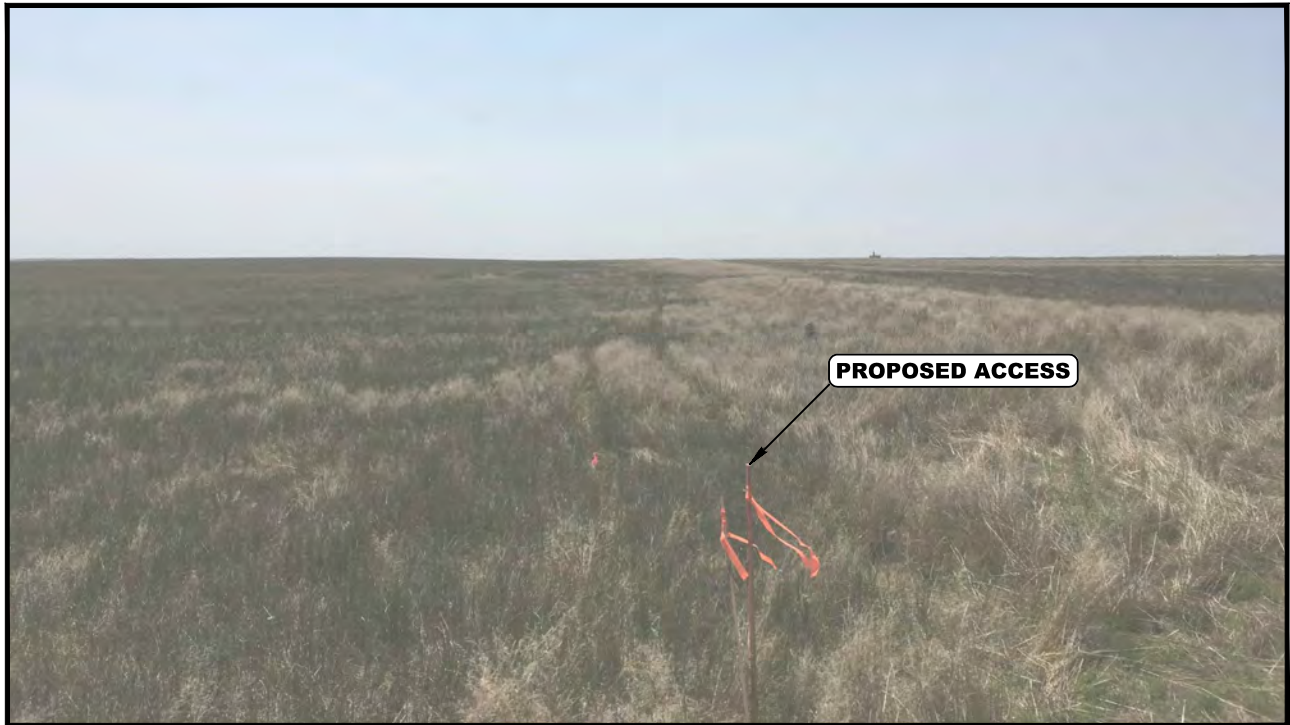


PHOTO: VIEW FROM BEGINNING OF PROPOSED ACCESS

CAMERA ANGLE: WESTERLY

**BISON OIL & GAS II**

**HUNT FED 8-60 19 PAD**  
**SE 1/4 NE 1/4, SECTION 19, T8N, R60W, 6th P.M.**  
**WELD COUNTY, COLORADO**

TAKEN BY	J.F., G.B.	08-28-17	
DRAWN BY	C.C.	09-01-17	
<b>LOCATION PHOTOS</b>			<b>PHOTO</b>



**UELS, LLC**  
 Corporate Office \* 85 South 200 East  
 Vernal, UT 84078 \* (435) 789-1017

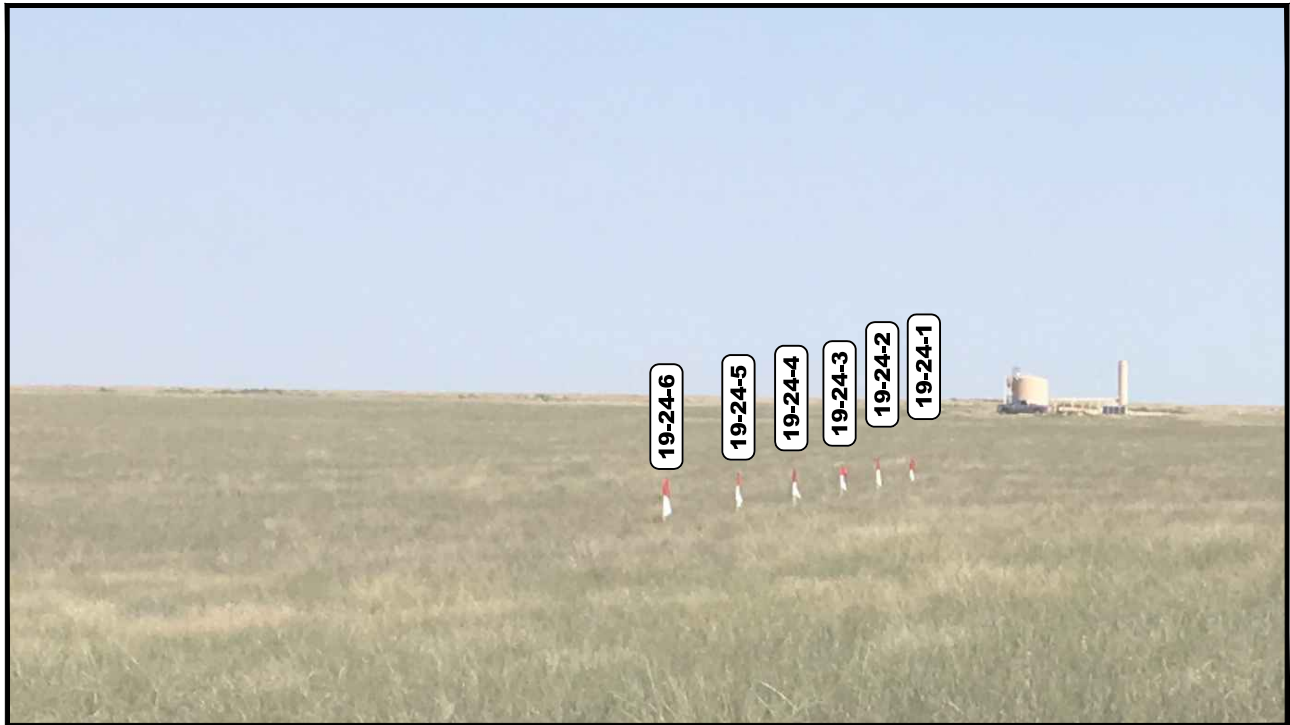


PHOTO: VIEW OF LOCATION STAKES

CAMERA ANGLE: NORTHERLY



PHOTO: VIEW OF LOCATION STAKES

CAMERA ANGLE: EASTERLY

**BISON OIL & GAS II**

**HUNT FED 8-60 19 PAD**  
**SE 1/4 NE 1/4, SECTION 19, T8N, R60W, 6th P.M.**  
**WELD COUNTY, COLORADO**

TAKEN BY	J.F., G.B.	08-28-17	
DRAWN BY	C.C.	09-01-17	
<b>LOCATION PHOTOS</b>			<b>PHOTO 2</b>



**UELS, LLC**  
 Corporate Office \* 85 South 200 East  
 Vernal, UT 84078 \* (435) 789-1017

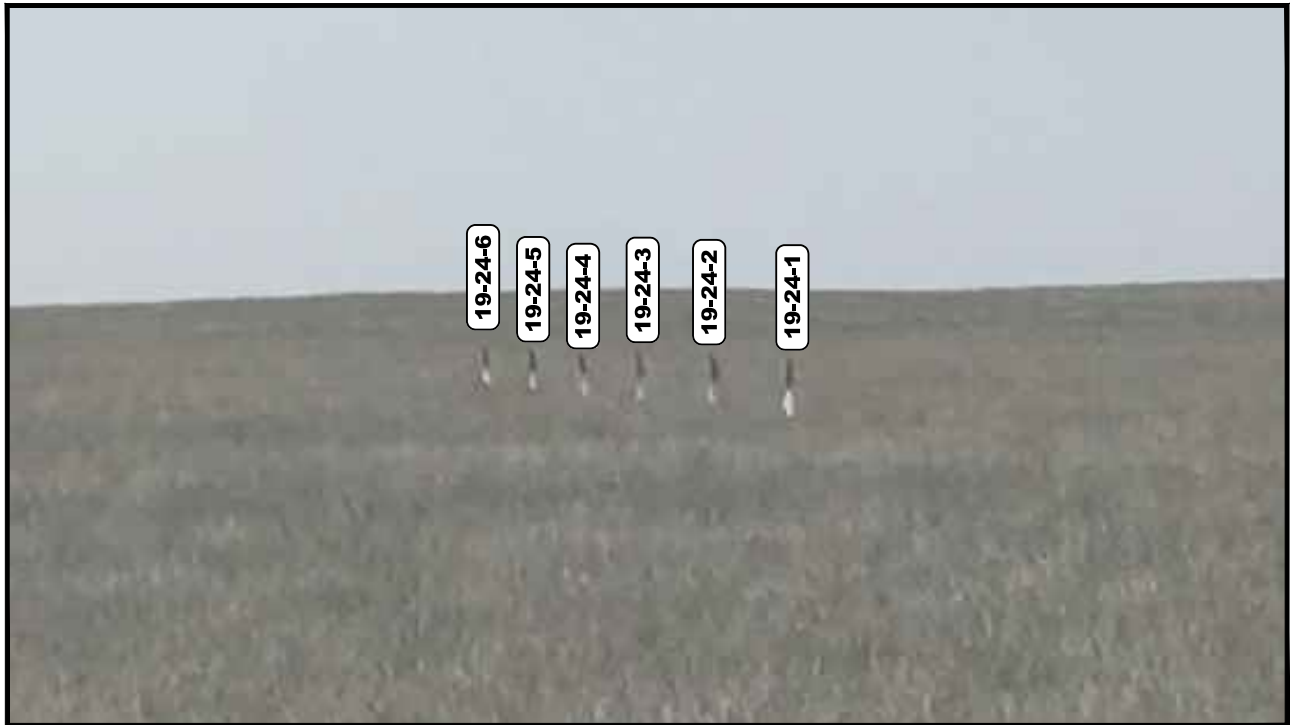


PHOTO: VIEW OF LOCATION STAKES

CAMERA ANGLE: SOUTHERLY

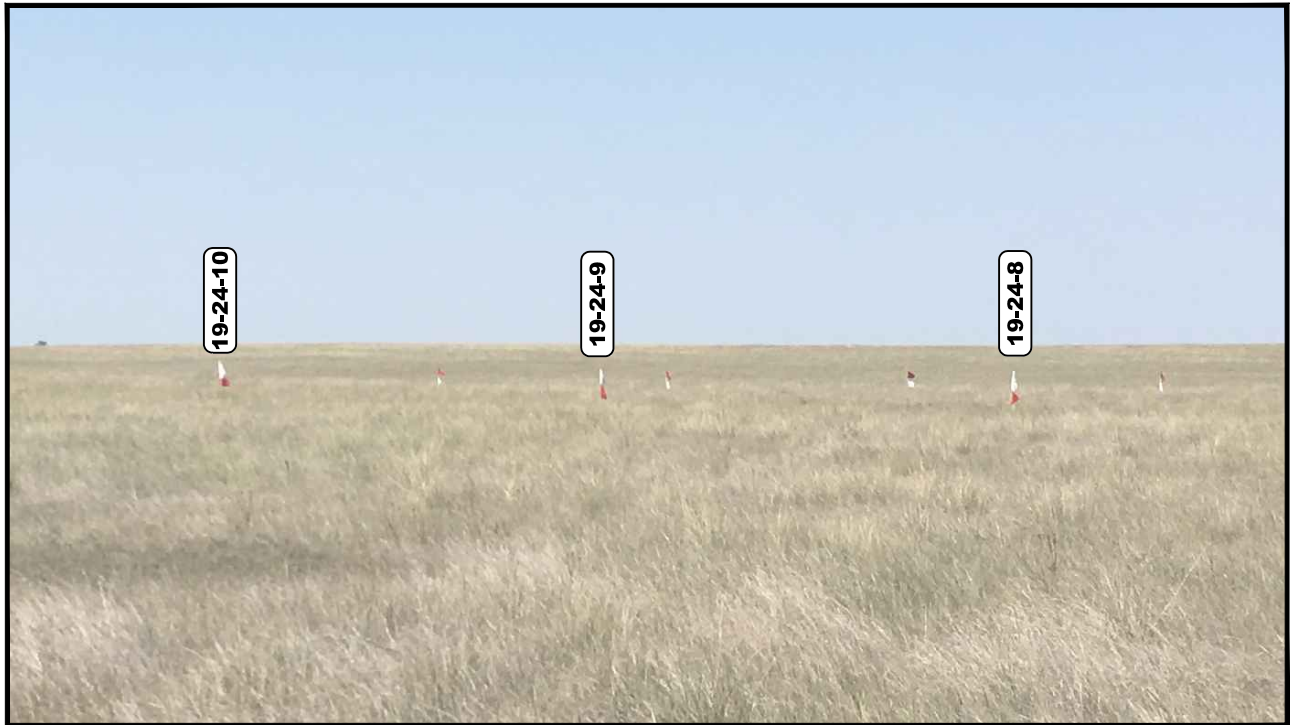


PHOTO: VIEW OF LOCATION STAKES

CAMERA ANGLE: WESTERLY

**BISON OIL & GAS II**

**HUNT FED 8-60 19 PAD**  
**SE 1/4 NE 1/4, SECTION 19, T8N, R60W, 6th P.M.**  
**WELD COUNTY, COLORADO**

TAKEN BY	J.F., G.B.	08-28-17	
DRAWN BY	C.C.	09-01-17	
<b>LOCATION PHOTOS</b>			<b>PHOTO 3</b>



**UELS, LLC**  
 Corporate Office \* 85 South 200 East  
 Vernal, UT 84078 \* (435) 789-1017