

Inspection Photos

9/28/2017

Operator: NOBLE ENERGY INC - 100322

Location ID: 323427

Inspection Doc. Number: 682502632

Weld County, CO

Aaron Trujillo
NE Reclamation Specialist
COGCC



Photo 1: Photo taken from the southeast end of the former battery location, facing west. Photo shows battery location remains unreclaimed; gravel remains, location/access road has not been returned to its designated final land use. No 502.b variance to not perform reclamation at the battery and access road has been submitted by operator or approved. Location and access road remain subject to COGCC 1000 series reclamation requirements.



Photo 2: Photo taken from the southeast end of the former battery location, facing south. Photo shows battery location remains unreclaimed; gravel remains, location/access road has not been returned to its designated final land use. See Photo 1 for additional comments.



Photo 3: 1984 USGS aerial imagery. Well was spud 1986. Photo shows location prior to oil and gas activities. Photo shows access road and battery location did not pre-exist oil and gas activities.

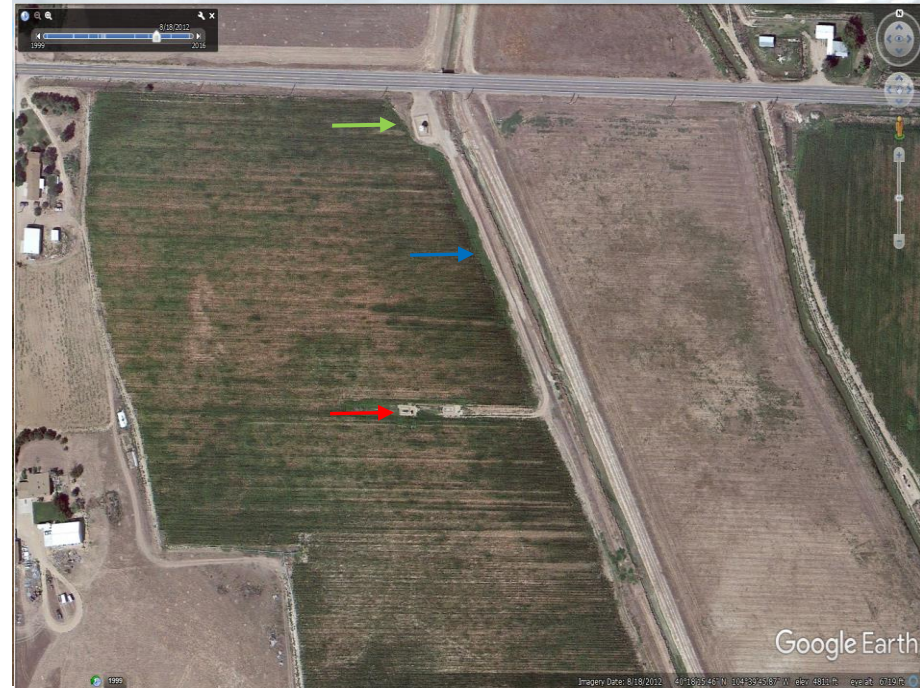


Photo 4: 2012 Aerial imagery. Photo shows the **well** and **battery** location, as well as the **access road**.