

Inspection Photos

9/28/2017

Operator: NOBLE ENERGY INC - 100322

Location ID: 323052

Inspection Doc. Number: 682502628

Weld County, CO

Aaron Trujillo
NE Reclamation Specialist
COGCC



Photo 1: Photo taken from the south end of the well location. Corrective actions from previous inspections required operator to perform reclamation activities to reclaim the well site and access road by 7/31/2017. Gravel remains, location is predominantly undersirable weedy plant species; No reclamation activities appear to have been conducted.



Photo 2: Photo taken from the battery location, facing east. Previous inspections dated 6/30/2017 and 8/17/2017 required operator to repair erosion and install required BMPs to prevent further degradation. Photo shows stormwater erosion has not been repaired and no BMPs have been installed. 6 foot measuring stick for reference.



Photo 3: Photo taken from the north end of the battery facility, facing north. See comments in photo 2.



Photo 4: Photo taken from the battery facility, facing northeast. See comments in photo 2.

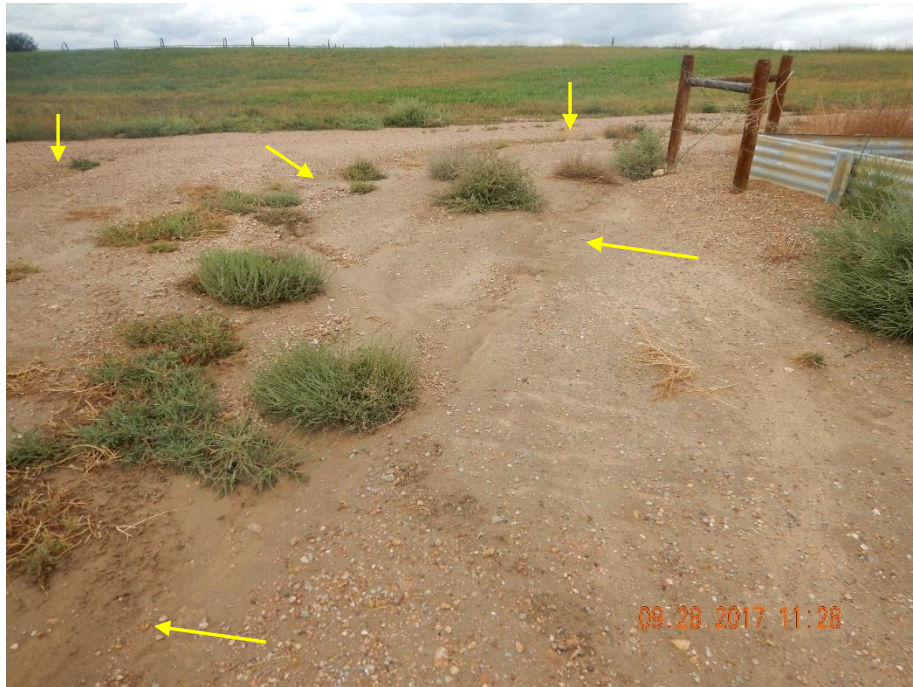


Photo 5: Photo taken from the battery facility, facing west. See comments in photo 2.



Photo 6: Photo taken from the north end of the battery location, facing north along the access road. Photo shows stormwater appears to have concentrated uphill on the access road, channelized and run onto the battery facility causing the erosion degradation seen on location. The eastern rut of the access road shows sign of head-cutting and incising. 6 foot measuring stick for reference.



Photo 7: Photo taken from the north end of the battery facility. Photo shows areas of sediment deposition caused by sediment laden stormwater discharge. 6 foot measuring stick for reference.



Photo 8: Photo taken from the north end of the battery location, facing south. Photo shows stormwater appears to have concentrated uphill on the access road, channelized and run onto the battery facility causing the erosion degradation seen on location. The eastern rut of the access road shows sign of head-cutting and incising.



Photo 9: Photo taken from the access road north of the location. Photo shows areas of the access road where head-cutting and incising due to stormwater erosion becomes first evident.



Photo 10: Photo taken from the access road, north of the location, facing south. Inspection doc. #682502370 on 6/30/2017 documented that ruts were beginning to form on the access road, and advised maintenance. Photo shows no maintenance has occurred on access road, and it appears that travel over the access road during inclement weather conditions has caused further degradation. Water accumulation seen here due to recent rain event.



Photo 11: Photo taken from the access road, north of the location, facing northwest. Photo shows no maintenance has occurred on access road, and it appears that travel over the access road during inclement weather conditions has further degraded the access road. Inspector parked and accessed the location via foot to prevent any additional damage.