

### WELL PAD - AZUL 13-18HZ

**AZUL 13-21HZ**  
**WELL LOCATION CERTIFICATE**  
732' FSL & 2326' FWL SESW (SURFACE)  
LOCATED IN SECTION 13  
50' FNL & 2518' FEL NWNE (HEEL)  
468' FSL & 2512' FEL SWSE (BOTTOM)  
LOCATED IN SECTION 24  
T1N, R66W, 6TH P.M.  
WELD COUNTY, COLORADO

**Kerr-McGee Oil &  
Gas Onshore L.P.**  
1099 18th Street  
Denver, Colorado 80202



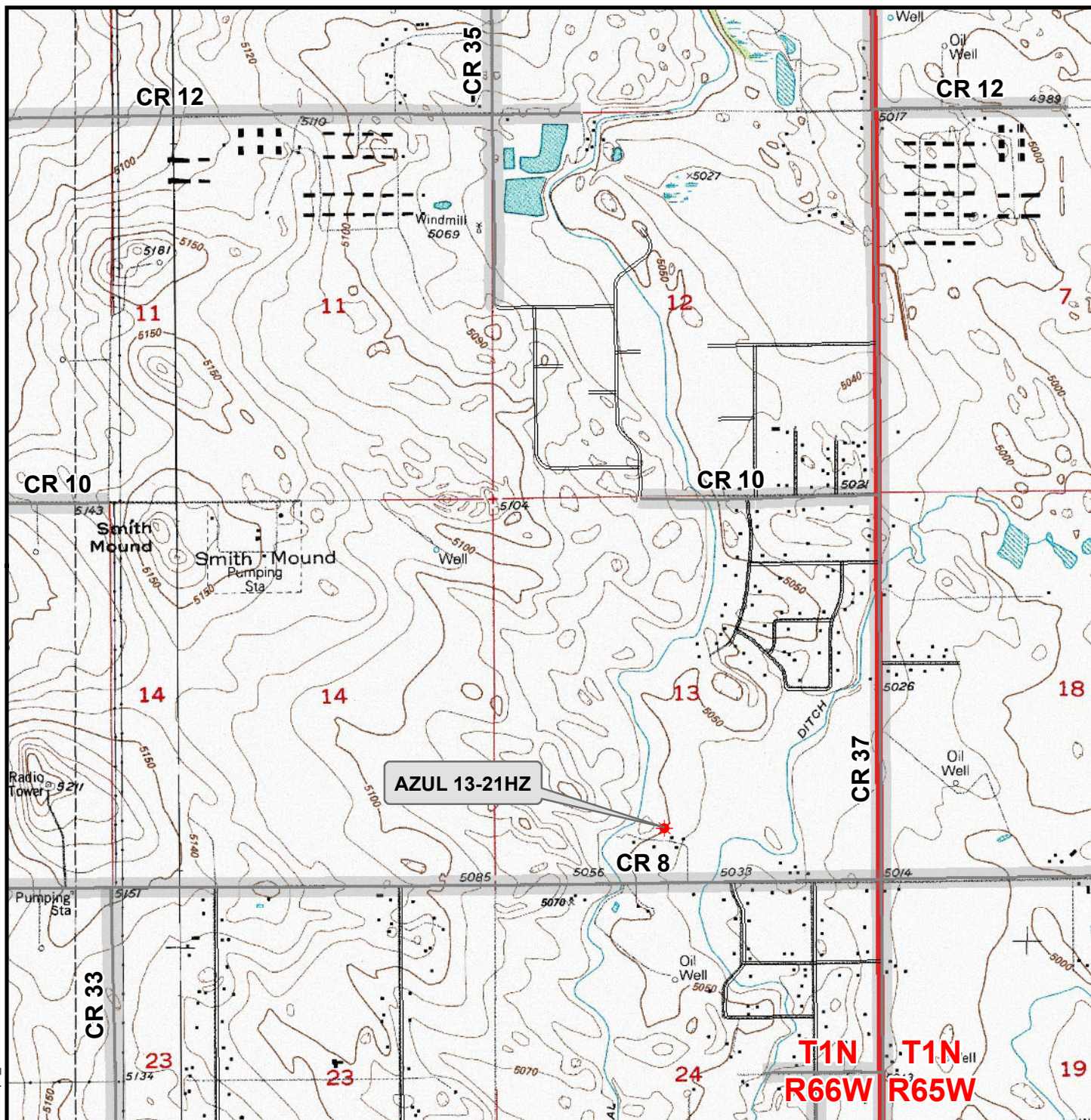
### CONSULTING, LLC

**SHERIDAN OFFICE**  
1095 Saberton Avenue  
Sheridan, Wyoming 82801  
Phone 307-674-0609

**LOVELAND OFFICE**  
1635 Foxtrail Drive, Suite 204  
Loveland, Colorado 80538  
Phone 970-776-4331

DRAFTED BY:	LMO	CHECKED BY:	RKF
DATE DRAFTED:	6/19/17	DATE SURVEYED:	5/11/17
REVISED:		FILE NAME:	16-194





### Legend

- ★ Well - Fee - Proposed   
      Road - Primitive - Existing   
      Road - County - Existing  
     Road - Improved - Existing   
     Road - Highway - Existing

**WELL PAD - AZUL 13-18HZ**  
**GENERAL LOCATION MAP**  
**AZUL 13-21HZ**  
**LOCATED IN SECTION 13**  
**T1N, R66W, 6th P.M.**  
**WELD COUNTY, COLORADO**

**Kerr-McGee Oil &**  
**Gas Onshore L.P.**

1099 18th Street  
 Denver, Colorado 80202



**CONSULTING, LLC**

SHERIDAN OFFICE    LOVELAND OFFICE  
 1095 Saberton Avenue    1635 Foxtail Drive, Suite 204  
 Sheridan, Wyoming 82801    Loveland, Colorado 80538  
 Phone 307-674-0609    Phone 970-776-4331

SCALE: 1" = 2,000ft

NAD83 CO-Nft

DRAWN: SP

DATE: 20 Jun 2017

REVISED:

DATE: