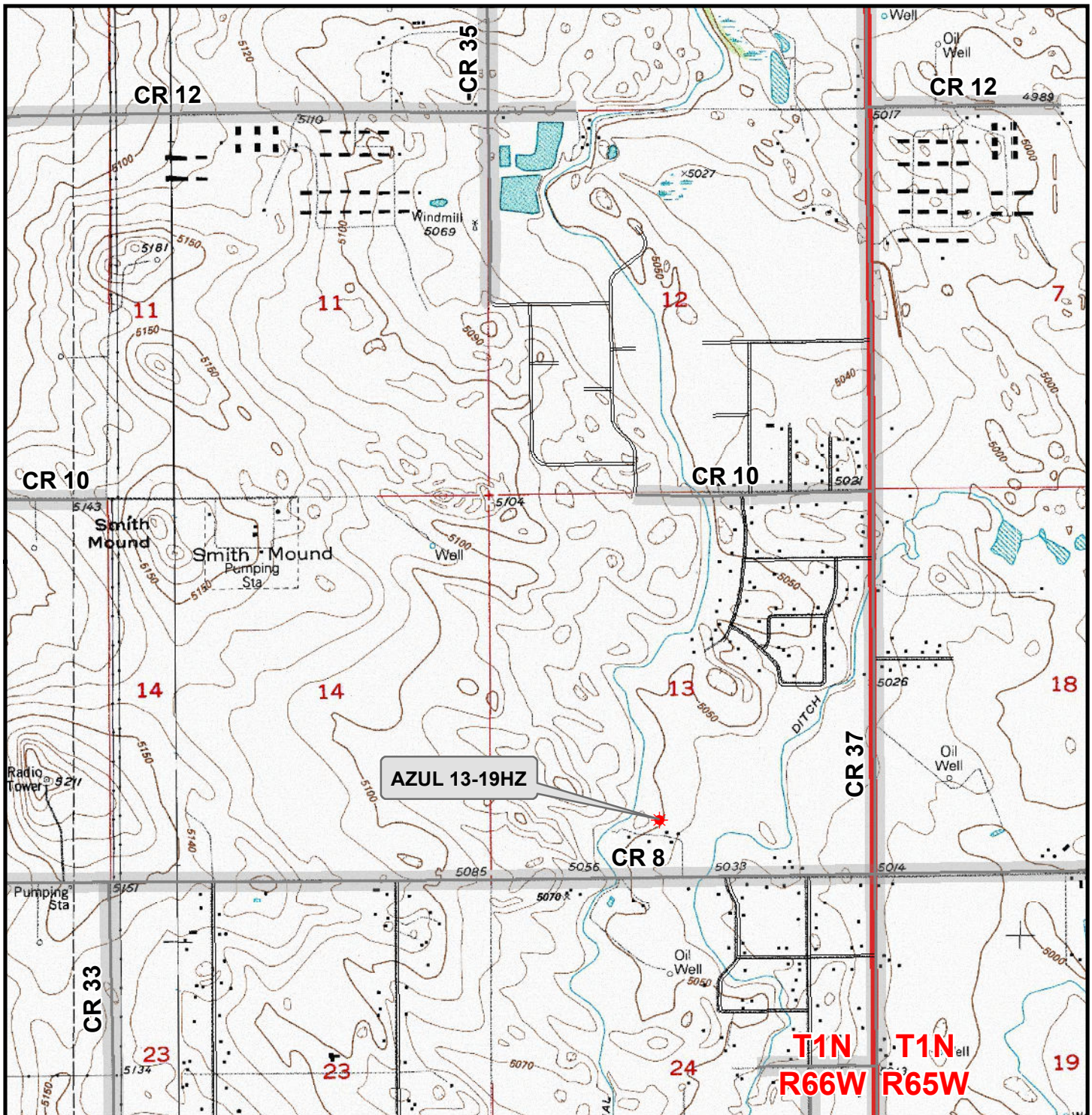


c:\ANADARKO\2016_194_AZUL_T1N_R66W_SEC_13\PLATS\13-18HZ\AZUL 13-18HZ PLATS.dwg, 6/16/2017 2:16:58 PM, ethan

K:\ANADARKO\2016\2016_194_AZUL_T1N_R66W_SEC_13\GIS\Maps_ABC\Azul_13-18HZ\Azul_13-19HZ.mxd 6/20/2017 10:05:53 AM



Legend

- ★ Well - Fee - Proposed === Road - Primitive - Existing — Road - County - Existing
—— Road - Improved - Existing — Road - Highway - Existing

WELL PAD - AZUL 13-18HZ
GENERAL LOCATION MAP
AZUL 13-19HZ
LOCATED IN SECTION 13
T1N, R66W, 6th P.M.
WELD COUNTY, COLORADO

**Kerr-McGee Oil &
Gas Onshore L.P.**

1099 18th Street
Denver, Colorado 80202



CONSULTING, LLC

SHERIDAN OFFICE **LOVELAND OFFICE**
1095 Saberton Avenue 1635 Foxtail Drive, Suite 204
Sheridan, Wyoming 82801 Loveland, Colorado 80538
Phone 307-674-0609 Phone 970-776-4331

SCALE: 1" = 2,000ft

NAD83 CO-Nft

DRAWN: SP

DATE: 20 Jun 2017

REVISED:

DATE: