



# Kerr-McGee Oil & Gas Onshore LP

A subsidiary of Anadarko Petroleum Corporation

1099 18<sup>th</sup> Street  
Denver, CO 80202  
720-929-6000

September 8, 2017

Matt Lepore  
Director, Colorado Oil and Gas Conservation Commission  
Department of Natural Resources  
The Chancery Building  
1120 Lincoln Street, Suite 801  
Denver, CO 80203

Re: **30 Day Certification Letter - 318A.e**  
AZUL 13-18HZ (Doc No. 401393277)  
Township 1 North, Range 66 West  
Section 13: SESW  
Unit Acreage: 400 Acres  
Unit Spacing: 01N66W SEC 13: E2W2 ; W2E2  
01N66W SEC 24: NWNE ; NENW  
Weld County, Colorado

Dear Director Lepore:

Kerr-McGee Oil and Gas Onshore LP ("KMG") hereby certifies that a thirty (30) day notice was sent to 20 mineral owners by certified mail. We have not received any objections to such well location, proposed spacing unit, or additional producing formation from the delivered 17 Notices. The undeliverable notices have a combined working interest of 0.00195547%. KMG hereby respectfully requests approval of this well.

If you have any questions or issues regarding this permit, please contact me at (720) 929-6907.

Sincerely,

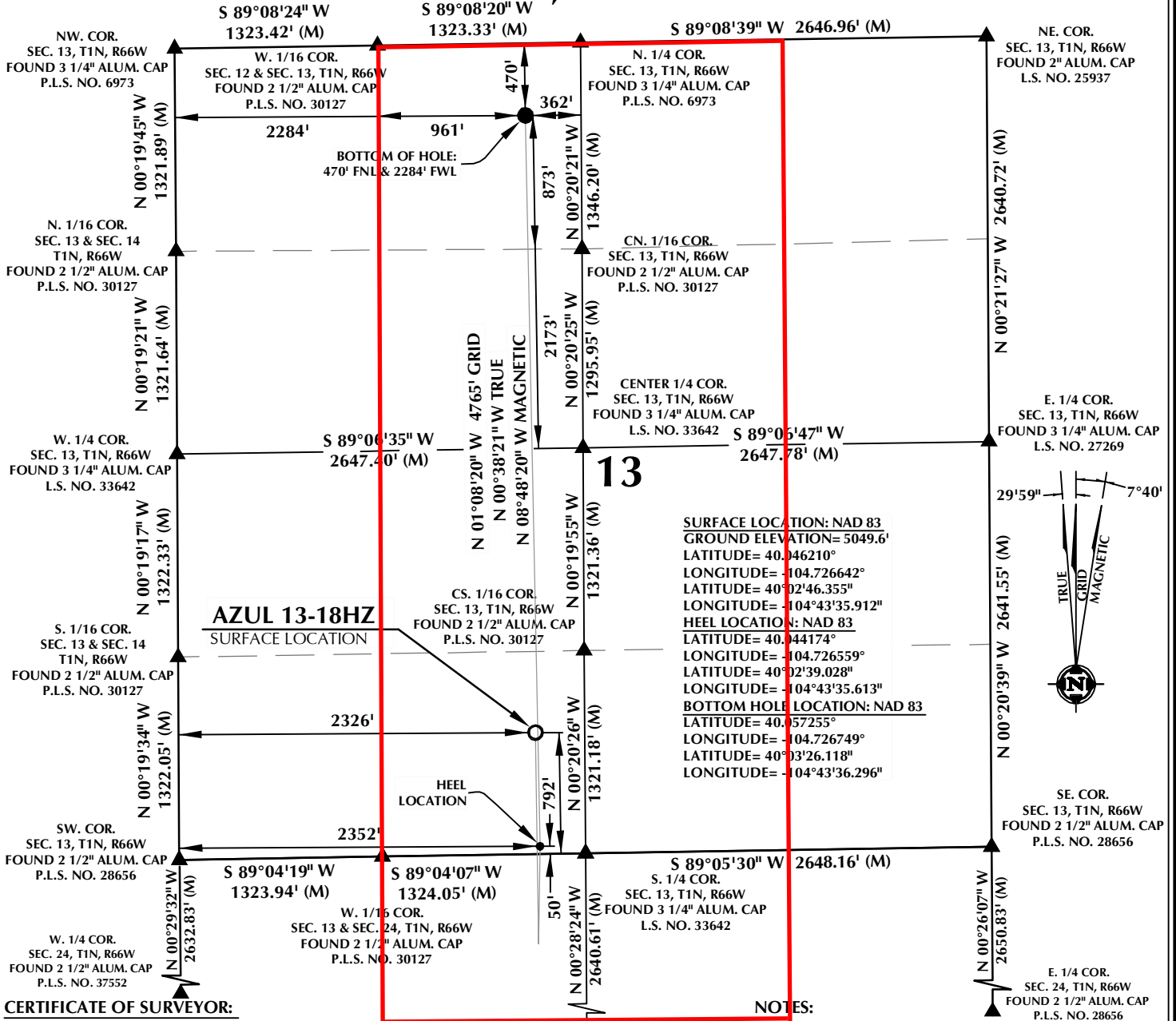
**Kerr-McGee Oil and Gas Onshore LP**

A blue ink signature of Craig Richardson, consisting of a stylized 'C' followed by a horizontal line.

Craig Richardson  
Regulatory Analyst II

Enclosure

# T1N, R66W



## CERTIFICATE OF SURVEYOR:

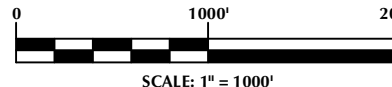
THIS IS TO CERTIFY THAT THE ABOVE PLAT WAS PREPARED FROM FIELD NOTES OF ACTUAL SURVEYS MADE BY ME OR UNDER MY SUPERVISION AND THAT THE SAME ARE TRUE AND CORRECT TO THE BEST OF MY KNOWLEDGE AND BELIEF. THIS CERTIFICATE DOES NOT REPRESENT A LAND SURVEY PLAT OR IMPROVEMENT SURVEY PLAT AS DEFINED BY C.R.S. 38-5-102 AND CANNOT BE RELIED UPON TO DETERMINE OWNERSHIP.

*Randall K. French*  
 RANDALL K. FRENCH  
 PROFESSIONAL LAND SURVEYOR  
 COLORADO REGISTRATION NUMBER 38512  
 6/19/17

NOTICE:  
 ACCORDING TO COLORADO STATE LAW YOU MUST READ THIS NOTICE OF CERTIFICATION OF SURVEY. IF YOU DISCOVER ANY DEFECT IN NO EVENT MAY ANY ACTION BASED UPON ANY DEFECT IN THIS SURVEY BE COMMENCED MORE THAN TEN YEARS FROM THE DATE ON THE CERTIFICATION SHOWN HEREON.

CENTER 1/4 COR.  
 SEC. 24, T1N, R66W  
 FOUND 2 1/2" ALUM. CAP  
 P.L.S. NO. 28656

NOTE:  
 MAGNETIC NORTH IS CURRENT AS OF 5/11/2017.  
 MAGNETIC NORTH CHANGES WEST 0°06' PER YEAR.



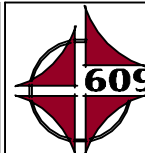
## NOTES:

- ▲ INDICATES SECTION CORNER
- INDICATES CALCULATED CORNER
- ELEVATION BASED ON NAVD88 (GEOID12B)
- BASIS OF BEARING DERIVED FROM COLORADO COORDINATE SYSTEM OF 1983 NORTH ZONE.
- ALL MEASURED DISTANCES ARE GRID.
- COMBINED SCALE FACTOR: .99972250 CALCULATED FROM THE W. 1/4 CORNER OF SECTION 13, T1N, R66W
- OPERATOR: PRESTON KNUSTEN / PDOP = 1.3
- SEE ADDENDUM TO WELL LOCATION CERTIFICATE FOR EXISTING IMPROVEMENTS WITHIN 500' OF THE WELL PAD.
- WELL FOOTAGES ARE MEASURED AT RIGHT ANGLES TO THE SECTION LINES.
- THE BOTTOM OF HOLE BEARS N01°08'20"W, 4765' FROM THE HEEL LOCATION.

## WELL PAD - AZUL 13-18HZ

AZUL 13-18HZ  
 WELL LOCATION CERTIFICATE  
 792' FSL & 2326' FWL SESW (SURFACE)  
 50' FSL & 2352' FWL SESW (HEEL)  
 470' FNL & 2284' FWL NENW (BOTTOM)  
 LOCATED IN SECTION 13  
 T1N, R66W, 6TH P.M.  
 WELD COUNTY, COLORADO

**Kerr-McGee Oil &  
 Gas Onshore L.P.**  
 1099 18th Street  
 Denver, Colorado 80202



## CONSULTING, LLC

SHERIDAN OFFICE  
 1095 Saberton Avenue  
 Sheridan, Wyoming 82801  
 Phone 307-674-0609

LOVELAND OFFICE  
 1635 Foxtrail Drive, Suite 204  
 Loveland, Colorado 80538  
 Phone 970-776-4331

DRAFTED BY:	LMO	CHECKED BY:	RKF
DATE DRAFTED:	6/19/17	DATE SURVEYED:	5/11/17
REVISED:		FILE NAME:	16-194