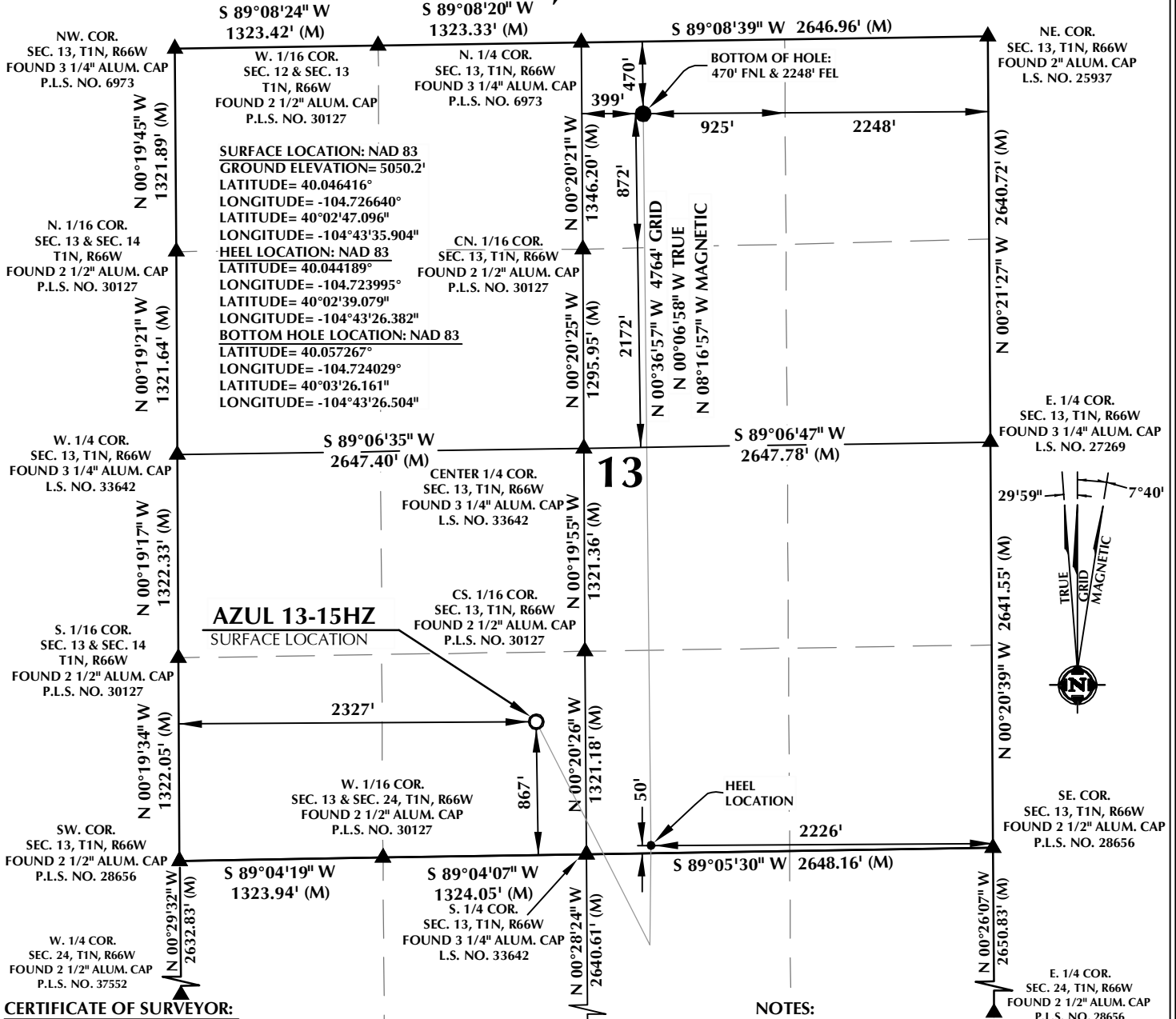


# T1N, R66W



## CERTIFICATE OF SURVEYOR:

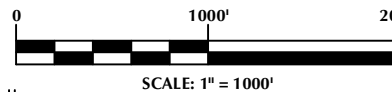
THIS IS TO CERTIFY THAT THE ABOVE PLAT WAS PREPARED FROM FIELD NOTES OF ACTUAL SURVEYS MADE BY ME OR UNDER MY SUPERVISION AND THAT THE SAME ARE TRUE AND CORRECT TO THE BEST OF MY KNOWLEDGE AND BELIEF. THIS CERTIFICATE DOES NOT REPRESENT A LAND SURVEY PLAT OR IMPROVEMENT SURVEY PLAT AS DEFINED BY C.R.S. 38-5-102 AND CANNOT BE RELIED UPON TO DETERMINE OWNERSHIP.

*Randall K. French*  
 RANDALL K. FRENCH  
 PROFESSIONAL LAND SURVEYOR  
 COLORADO REGISTRATION NUMBER 38512  
 6/19/17

NOTICE:  
 ACCORDING TO COLORADO STATE LAW YOU MUST TAKE REASONABLE LEGAL ACTION BASED UPON ANY DEFECT IN THIS SURVEY WITHIN THREE YEARS AFTER YOU FIRST DISCOVER SUCH DEFECT. IN NO EVENT MAY ANY ACTION BASED UPON ANY DEFECT IN THIS SURVEY BE COMMENCED MORE THAN TEN YEARS FROM THE DATE ON THE CERTIFICATION SHOWN HEREON.

CENTER 1/4 COR.  
 SEC. 24, T1N, R66W  
 FOUND 2 1/2" ALUM. CAP  
 P.L.S. NO. 28656

NOTE:  
 MAGNETIC NORTH IS CURRENT AS OF 5/11/2017.  
 MAGNETIC NORTH CHANGES WEST 0°06' PER YEAR.



## NOTES:

- ▲ INDICATES SECTION CORNER
- INDICATES CALCULATED CORNER
- ELEVATION BASED ON NAVD88 (GEOID12B)
- BASIS OF BEARING DERIVED FROM COLORADO COORDINATE SYSTEM OF 1983 NORTH ZONE.
- ALL MEASURED DISTANCES ARE GRID.
- COMBINED SCALE FACTOR: .99972250 CALCULATED FROM THE W. 1/4 CORNER OF SECTION 13, T1N, R66W
- OPERATOR: PRESTON KNUSTEN / PDOP = 1.3
- SEE ADDENDUM TO WELL LOCATION CERTIFICATE FOR EXISTING IMPROVEMENTS WITHIN 500' OF THE WELL PAD.
- WELL FOOTAGES ARE MEASURED AT RIGHT ANGLES TO THE SECTION LINES.
- THE BOTTOM OF HOLE BEARS N00°36'57"W, 4764' FROM THE HEEL LOCATION.

## WELL PAD - AZUL 13-18HZ

### AZUL 13-15HZ

#### WELL LOCATION CERTIFICATE

867' FSL & 2327' FWL SESW (SURFACE)

50' FSL & 2226' FEL SWSE (HEEL)

470' FNL & 2248' FEL NWNE (BOTTOM)

LOCATED IN SECTION 13

T1N, R66W, 6TH P.M.

WELD COUNTY, COLORADO

**Kerr-McGee Oil &  
 Gas Onshore L.P.**

1099 18th Street  
 Denver, Colorado 80202



## CONSULTING, LLC

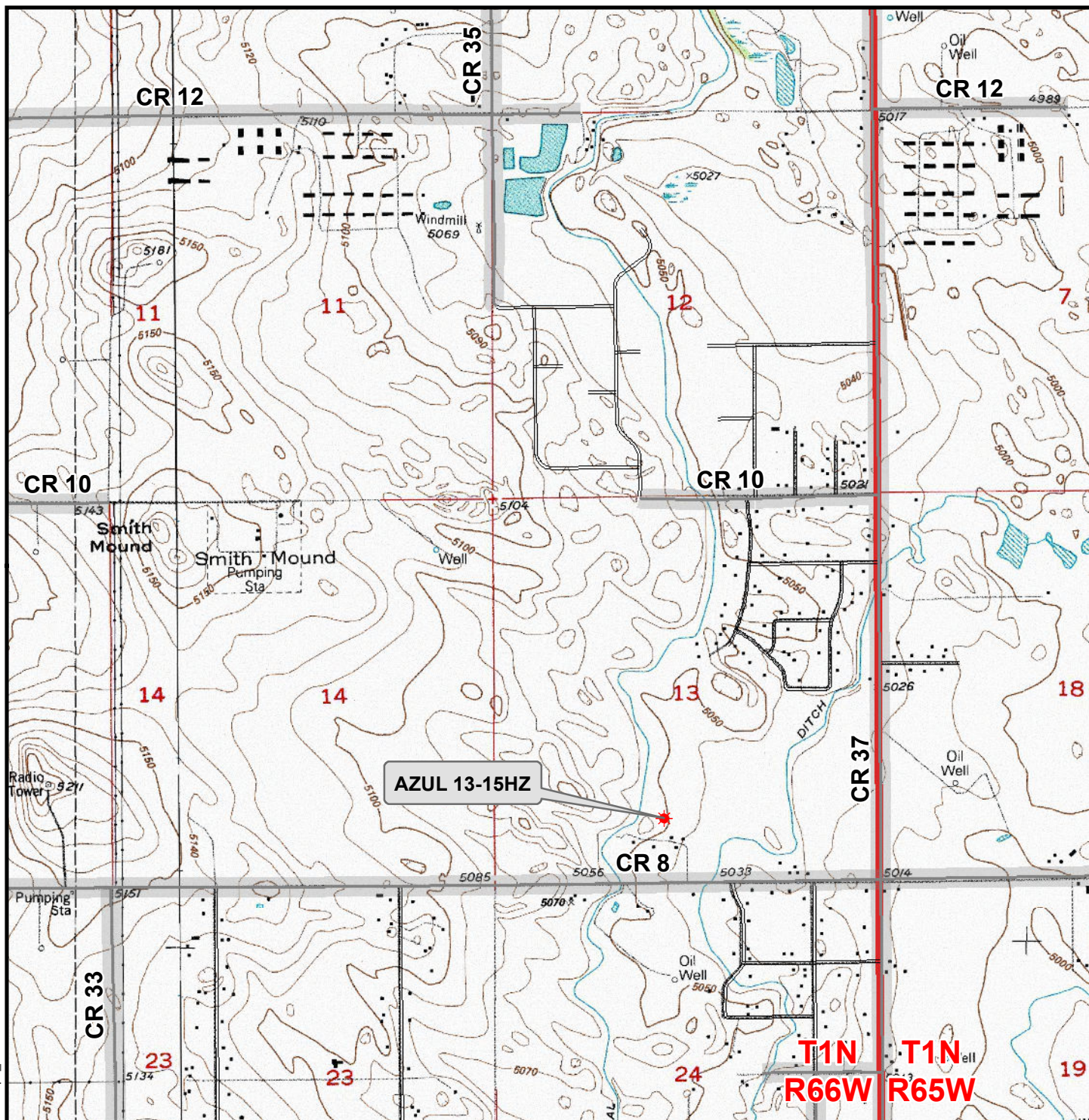
SHERIDAN OFFICE  
 1095 Saberton Avenue  
 Sheridan, Wyoming 82801  
 Phone 307-674-0609

LOVELAND OFFICE  
 1635 Foxtrail Drive, Suite 204  
 Loveland, Colorado 80538  
 Phone 970-776-4331

DRAFTED BY:	LMO	CHECKED BY:	RKF
DATE DRAFTED:	6/19/17	DATE SURVEYED:	5/11/17
REVISED:		FILE NAME:	16-194



K:\ANADARKO\2016\2016\_194\_AZUL\_T1N\_R66W\_SEC\_13\GIS\Maps\_ABC\Azul 13-18HZ\Azul 13-15HZ.mxd 6/20/2017 9:54:41 AM



### Legend

- ★ Well - Fee - Proposed    === Road - Primitive - Existing    — Road - County - Existing  
—— Road - Improved - Existing    — Road - Highway - Existing

**WELL PAD - AZUL 13-18HZ**  
**GENERAL LOCATION MAP**  
**AZUL 13-15HZ**  
**LOCATED IN SECTION 13**  
**T1N, R66W, 6th P.M.**  
**WELD COUNTY, COLORADO**

**Kerr-McGee Oil &  
Gas Onshore L.P.**

1099 18th Street  
Denver, Colorado 80202



**CONSULTING, LLC**

**SHERIDAN OFFICE**    **LOVELAND OFFICE**  
1095 Saberton Avenue    1635 Foxtail Drive, Suite 204  
Sheridan, Wyoming 82801    Loveland, Colorado 80538  
Phone 307-674-0609    Phone 970-776-4331

SCALE: 1" = 2,000ft

NAD83 CO-Nft

DRAWN: SP

DATE: 20 Jun 2017

REVISED:

DATE: