

# T5S, R96W, 6th P.M.

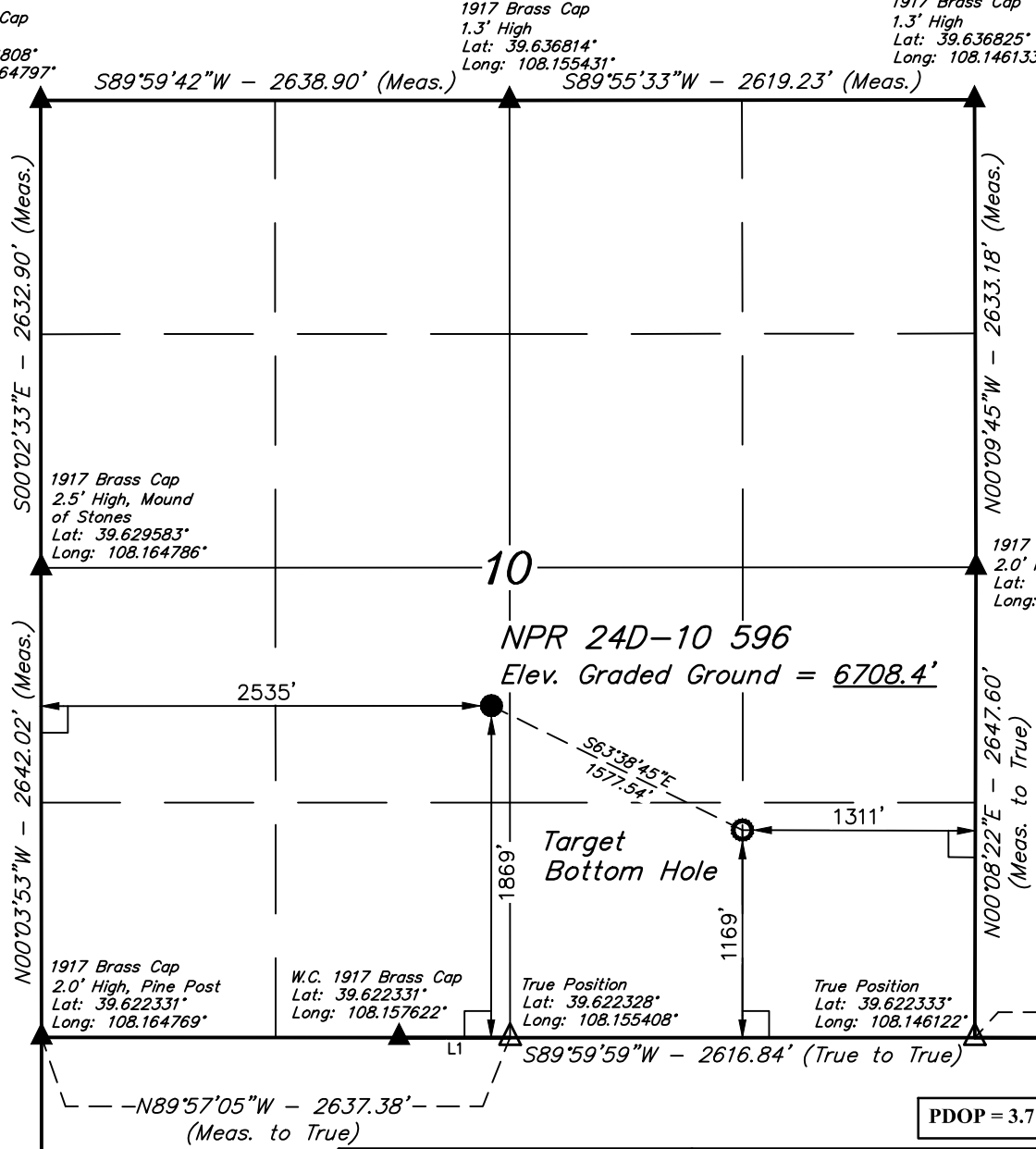
Caerus Oil & Gas LLC

**NPR 24D-10 596**  
**NE 1/4 SW 1/4, SECTION 10, T5S, R96W, 6th P.M.**  
**GARFIELD COUNTY, COLORADO**

**BASIS OF BEARINGS**  
 BASIS OF BEARINGS IS A G.P.S. OBSERVATION  
**BASIS OF ELEVATION**

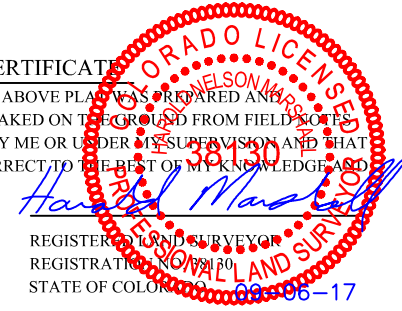
SPOT ELEVATION AT THE NORTHWEST CORNER OF SECTION 30, T5S, R95W, 6th P.M., TAKEN FROM THE FORKED GULCH QUADRANGLE, GARFIELD COUNTY, COLORADO, 7.5 MINUTE QUAD. (TOPOGRAPHIC MAP) PUBLISHED BY THE UNITED STATES DEPARTMENT OF THE INTERIOR, GEOLOGICAL SURVEY. SAID ELEVATION IS MARKED AS BEING 5966 FEET.

LINE TABLE		
LINE	DIRECTION	LENGTH
L1	S89°57'05"E	623.70'
L2	S89°54'44"E	1114.74'



**CERTIFICATE**

THIS IS TO CERTIFY THAT THE ABOVE PLAT WAS PREPARED AND THE LOCATION AS SHOWN WAS STAKED ON THE GROUND FROM FIELD SCOPES OF ACTUAL SURVEYS MADE BY ME OR UNDER MY SUPERVISION AND THAT THE SAME ARE TRUE AND CORRECT TO THE BEST OF MY KNOWLEDGE AND BELIEF.



REGISTERED LAND SURVEYOR  
 REGISTRATION NO. 38130  
 STATE OF COLORADO

PDOP = 3.7

**LEGEND:**

- └─┘ = 90° SYMBOL
- = PROPOSED WELLHEAD.
- = TARGET BOTTOM HOLE.
- ▲ = SECTION CORNERS LOCATED. (NAD 83)
- △ = SECTION CORNERS RE-ESTABLISHED. (Not Set on Ground.) (NAD 83)

<b>NAD 83 (SURFACE LOCATION)</b>	<b>NAD 83 (TARGET BOTTOM HOLE)</b>
LATITUDE = 39°37'38.85" (39.627458)	LATITUDE = 39°37'31.94" (39.625539)
LONGITUDE = 108°09'20.82" (108.155783)	LONGITUDE = 108°09'02.76" (108.150767)
<b>NAD 27 (SURFACE LOCATION)</b>	<b>NAD 27 (TARGET BOTTOM HOLE)</b>
LATITUDE = 39°37'38.94" (39.627483)	LATITUDE = 39°37'32.02" (39.625561)
LONGITUDE = 108°09'18.53" (108.155147)	LONGITUDE = 108°09'00.47" (108.150131)
<b>UTM NAD 27 (ZONE 12)</b>	<b>UTM NAD 27 (ZONE 12)</b>
N: 14403092.66 E: 2441515.64	N: 14402438.20 E: 2442951.10



**UELS, LLC**  
 Corporate Office \* 85 South 200 East  
 Vernal, UT 84078 \* (435) 789-1017

<b>SURVEYED BY</b>	BART HUNTING, J.F.	08-28-17	<b>SCALE</b>
<b>DRAWN BY</b>	M.D.	09-06-17	1" = 1000'

**WELL LOCATION PLAT**