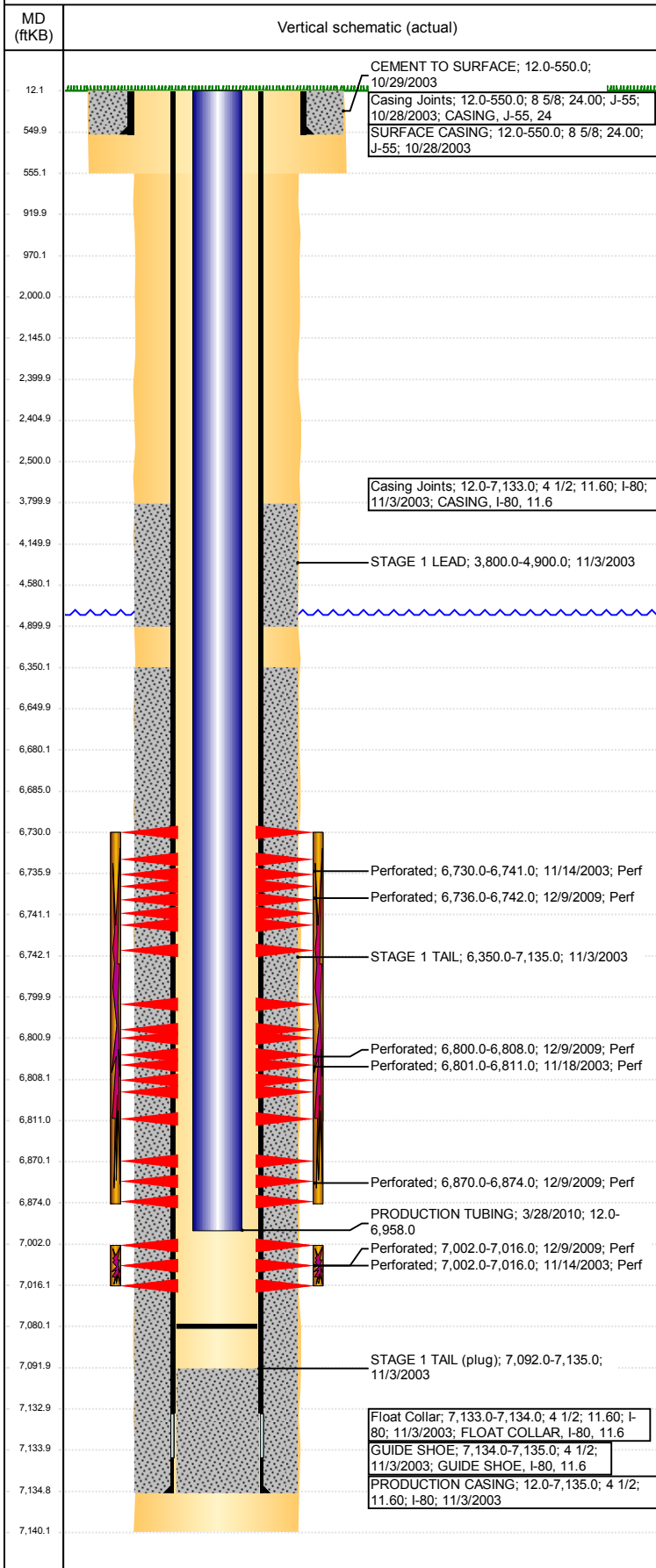


Well Name: JOHNSON 20-29

VERTICAL - ORIGINAL HOLE, 9/29/2017 10:08:04 AM



Well Header

API 05-123-21693	Business Unit DJ BASIN	District 15	Well Config VERTICAL
Original KB Elevation (ft) 4,802	KB - GL / MSL (ftKB) 12.00	Spud Date 10/28/2003	P & A Date

Comment

COGCC D&C RPT SAYS SURFACE TD=550; TOC = 3800'. WELL REPORTS & CSG TALLY SAY SURFACE TD=555. EST. TOC ON CBL = 3861', . FRAC PLUG DRILLED OUT 3/28/2010 @6900'. HIT SOMETHING AT 4500' AND PUSHED TO BOTTOM

Directions To Well

WCR 40 & WCR 49 E2 N INTO LOC

Congressional Location

Quarter 3	Quarter 4 SE	Section 29	Township 4	Twnshp N/S Dir N	Range 64	Range E/W Dir W
-----------	-----------------	---------------	---------------	---------------------	-------------	--------------------

Bottom Hole Location

North-South Distance (ft)	From N or S Line	East-West Distance (ft)	From E or W Line
---------------------------	------------------	-------------------------	------------------

Plug Back Total Depths

Date	Depth (ftKB)	Method	Com
11/3/2003	7,135.0	FLOAT COLLAR	FLOAT COLLAR
11/14/2003	7,092.0	CASED HOLE LOG	CBL LOGGERS DEPTH
3/28/2010	7,080.0	TAG	TAG SAND, DRILED OUT FRAC PLUG TO 7080

Wellbore Sections

Section Des	Size (in)	Act Top, MD (ftKB)	Act Btm, MD (ftKB)
SURFACE	12 1/4	12	555
PRODUCTION	7 7/8	555	7,140

Zone Statuses

Zone Name	Status Date	Status	Fluid Type	Job	Prod Method
NIOBRARA	1/13/2010	PR	Gas	RE-FRAC, 12/9...	
CODELL	1/13/2010	PR	Gas	RE-FRAC, 12/9...	
NIOBRARA-C...	1/13/2010	PR	Gas	RE-FRAC, 12/9...	

Casing Strings

SURFACE CASING, 550.0ftKB

Casing Description	Run Date	OD (in)	Wt/Len (l...)	Grade	Top, MD (ft...)	MD (ftKB)
SURFACE CASING	10/28/2003	8 5/8	24.00	J-55	12.0	550.0

PRODUCTION CASING, 7,135.0ftKB

Casing Description	Run Date	OD (in)	Wt/Len (l...)	Grade	Top, MD (ft...)	MD (ftKB)
PRODUCTION CASING	11/3/2003	4 1/2	11.60	I-80	12.0	7,135.0

Cement

Description	Top Depth (ftKB)	Bottom Depth (ftKB)
CEMENT TO SURFACE	12.0	550.0
STAGE 1 LEAD	3,800.0	4,900.0
STAGE 1 TAIL	6,350.0	7,135.0
Dump Bail	6,650.0	6,680.0
Balance Plug	4,150.0	4,580.0
Remedial Casing Cement	2,000.0	2,500.0
Cement Plug	2,145.0	2,400.0
Cement Plug	2,405.0	2,500.0
Shoe Plug	920.0	970.0
Shoe Plug	550.0	555.0
Shoe Plug	555.0	920.0
Shoe Plug	12.0	550.0

Tubing Strings

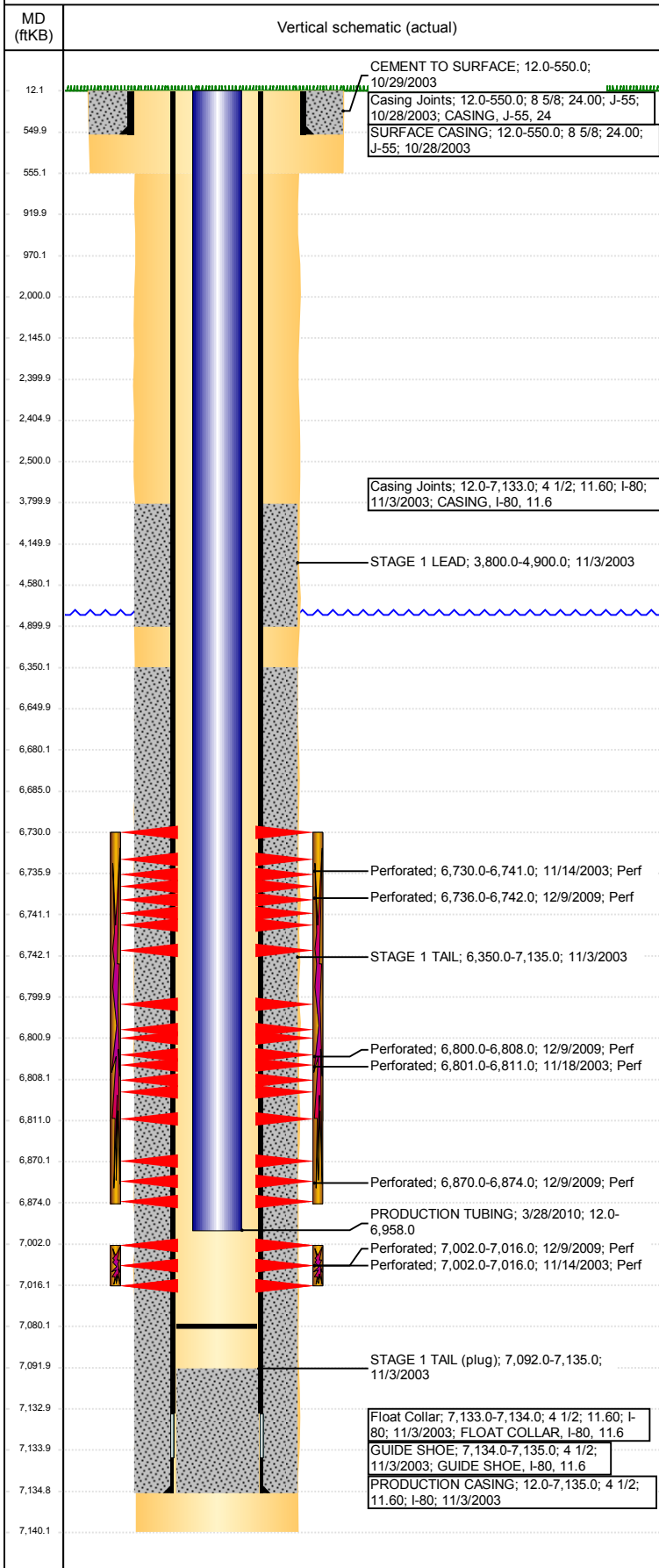
Tubing Description	Run Date	String...	ID (in)	Wt (lb/ft)	Grade	Len (ft)	Set De...
PRODUCTION TUBING	3/28/2010	2 3/8	2.00	4.70	J-55	6,946.00	

Other In Hole

Run Date	Des	OD (in)	Top (ftKB)	Btm (ftKB)
	Cement Retainer	4	2,400.0	2,405.0
9/29/2017	Cast Iron Bridge Plug	4	6,680.0	6,685.0

Well Name: JOHNSON 20-29

VERTICAL - ORIGINAL HOLE, 9/29/2017 10:08:05 AM



Logs			
Date	Type	Top, MD (ftKB)	Btm, MD (ftKB)
11/2/2003	COMPENSATED NEUTRON	4,200.0	7,121.0
11/2/2003	GAMMA RAY	4,200.0	7,121.0
11/2/2003	INDUCTION	548.0	7,131.0
11/14/2003	CBL/CCL/GR	3,600.0	7,092.0

Perforation Data					
Linked Zone	Bnch/St g	Sum of Entered Shot Total	Top (ftKB)	Btm (ftKB)	Date
NIOBRARA, ORIGINAL HOLE	A	0	2,500.00	2,500.00	9/29/2017
NIOBRARA, ORIGINAL HOLE	A	3	6,730.00	6,741.00	11/14/2003
NIOBRARA, ORIGINAL HOLE	A	18	6,736.00	6,742.00	12/9/2009
NIOBRARA, ORIGINAL HOLE	B	24	6,800.01	6,808.01	12/9/2009
NIOBRARA, ORIGINAL HOLE	B	4	6,801.00	6,811.00	11/18/2003
NIOBRARA, ORIGINAL HOLE	C	12	6,870.01	6,874.01	12/9/2009
CODELL, ORIGINAL HOLE		14	7,002.00	7,016.00	11/14/2003
CODELL, ORIGINAL HOLE		60	7,002.00	7,016.00	12/9/2009
Total (Sum)		135			

Stimulation Intervals		
Start Date	Primary Job Type	
11/19/2003	DRILLING/COMPLETION - ORIGINAL	
Technical Result	Tech Result Details	Tech Result Note
Comment		
Start Date	Primary Job Type	
12/9/2009	RE-FRAC	
Technical Result	Tech Result Details	Tech Result Note
Comment		
Start Date	Primary Job Type	
11/19/2003	DRILLING/COMPLETION - ORIGINAL	
Technical Result	Tech Result Details	Tech Result Note
Comment		
Start Date	Primary Job Type	
12/9/2009	RE-FRAC	
Technical Result	Tech Result Details	Tech Result Note
Comment		