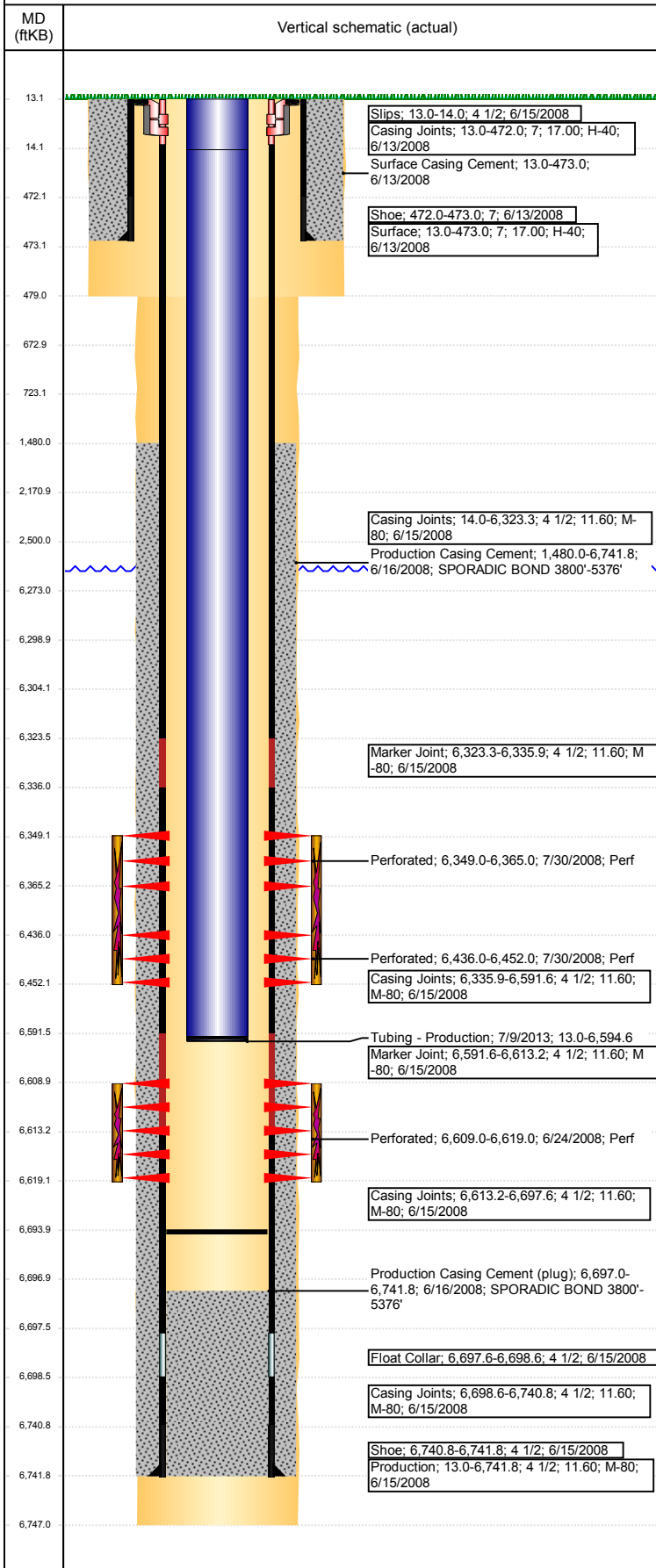


Well Name: WELLS RANCH USX BB11-06

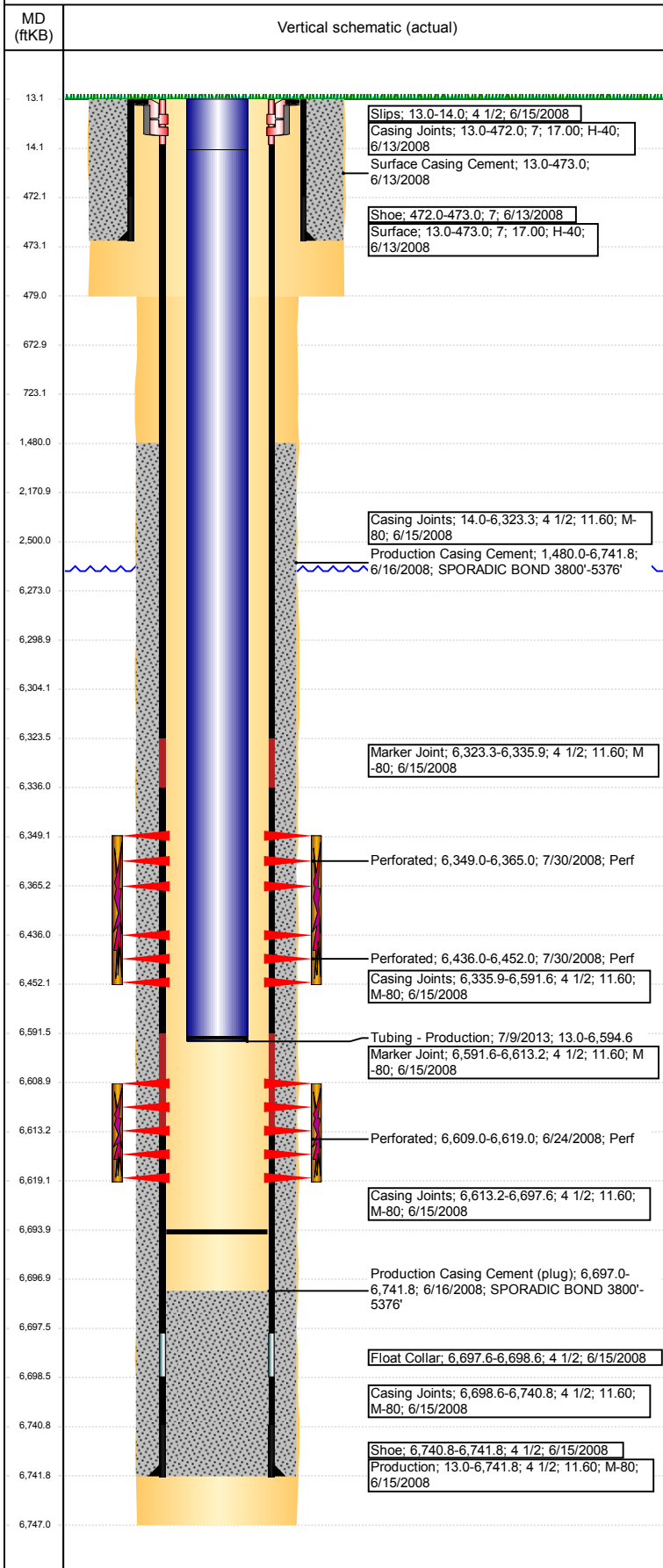
VERTICAL - ORIGINAL HOLE, 9/28/2017 8:36:18 AM



Well Header							
API 05-123-26758	Business Unit DJ BASIN		District 15		Well Config VERTICAL		
Original KB Elevation (ft) 4,681	KB - GL / MSL (ftKB) 13.00		Spud Date 6/13/2008		P & A Date		
Comment							
Directions To Well WR USX BB11-06: WCR 68 & 67, E 0.2, S 2.75 TO COW CAMP, E 0.2, S 0.5, SE 0.4, S 1, W 0.1 INTO LOCATION.							
Congressional Location							
Quarter 3 SE	Quarter 4 NW	Section 11	Township 5	Twntshp N/S Dir N	Range 63	Range E/W Dir W	
Bottom Hole Location							
North-South Distance (ft)		From N or S Line		East-West Distance (ft)		From E or W Line	
Plug Back Total Depths							
Date	Depth (ftKB)	Method		Com			
6/15/2008	6,697.0	CASING TALLY		TOP OF FLOAT COLLAR DEPTH LOGGER ON CBL DRILL CIFT P W/ SHOE AND CHASE DOWN W/ 21...			
6/23/2008	6,671.0	CASED HOLE LOG					
9/26/2008	6,679.0	TUBING TALLY					
11/16/2011	6,680.3	TUBING TALLY					
7/8/2013	6,694.0	TAG					
Wellbore Sections							
Section Des		Size (in)		Act Top, MD (ftKB)		Act Btm, MD (ftKB)	
SURFACE		9 7/8		13		479	
PRODUCTION		6 1/4		479		6,747	
Zone Statuses							
Zone Name	Status Date	Status	Fluid Type	Job	Prod Method		
NIOBRARA	8/1/2008	PR		DRILLING/CO...			
CODELL	8/1/2008	PR		DRILLING/CO...			
Casing Strings							
Surface, 473.0ftKB							
Casing Description	Run Date	OD (in)	Wt/Len (l...	Grade	Top, MD (ft...	MD (ftKB)	
Surface	6/13/2008	7	17.00	H-40	13.0	473.0	
Production, 6,741.8ftKB							
Casing Description	Run Date	OD (in)	Wt/Len (l...	Grade	Top, MD (ft...	MD (ftKB)	
Production	6/15/2008	4 1/2	11.60	M-80	13.0	6,741.8	
Cement							
Description				Top Depth (ftKB)		Bottom Depth (ftKB)	
Surface Casing Cement				13.0		473.0	
Description				Top Depth (ftKB)		Bottom Depth (ftKB)	
Production Casing Cement				1,480.0		6,741.8	
Description				Top Depth (ftKB)		Bottom Depth (ftKB)	
PA Plug				6,273.0		6,299.0	
Description				Top Depth (ftKB)		Bottom Depth (ftKB)	
PA Plug				2,171.0		2,500.0	
Description				Top Depth (ftKB)		Bottom Depth (ftKB)	
PA Plug				673.0		723.0	
Description				Top Depth (ftKB)		Bottom Depth (ftKB)	
PA Plug				13.1		673.0	
Tubing Strings							
Tubing Description	Run Date	String...	ID (in)	Wt (lb/ft)	Grade	Len (ft)	Set De...
Tubing - Production	9/26/2008	2 3/8	2.00	4.70	J-55	6,579.40	
Tubing Description	Run Date	String...	ID (in)	Wt (lb/ft)	Grade	Len (ft)	Set De...
Tubing - Production	11/16/2011	2 3/8	2.00	4.70	J-55	6,583.48	
Tubing Description	Run Date	String...	ID (in)	Wt (lb/ft)	Grade	Len (ft)	Set De...
Tubing - Production	7/9/2013	2 3/8	2.00	4.70	J-55	6,581.57	
Other In Hole							
Run Date	Des			OD (in)	Top (ftKB)	Btm (ftKB)	
9/26/2008	Cast Iron Bridge Plug			4	6,299.0	6,304.0	
Logs							
Date	Type				Top, MD (ftKB)	Btm, MD (ftKB)	
6/15/2008	Caliper/Comp. Density/Neutron/GR/SP/ML				2,600.0	6,727.0	
6/15/2008	DIL/GR/SP/Caliper				473.0	6,747.0	
6/23/2008	CBL/CCL/GR				1,390.0	6,664.0	
7/7/2015	GYRO				13.0	6,500.0	

Well Name: WELLS RANCH USX BB11-06

VERTICAL - ORIGINAL HOLE, 9/28/2017 8:36:19 AM



Perforation Data					
Linked Zone	Bnch/St g	Sum of Entered Shot Total	Top (ftKB)	Btm (ftKB)	Date
NIOBRARA, ORIGINAL HOLE	A	64	6,349.00	6,365.00	7/30/2008
NIOBRARA, ORIGINAL HOLE	B	64	6,436.00	6,452.00	7/30/2008
CODELL, ORIGINAL HOLE		40	6,609.00	6,619.00	6/24/2008
Total (Sum)		168			
Stimulation Intervals					
Start Date 7/30/2008		Primary Job Type DRILLING/COMPLETION - ORIGINAL			
Technical Result Success		Tech Result Details According to Plan		Tech Result Note	
Comment FRAC THE CODELL - NO PROBLEMS TO REPORT					
Start Date 7/30/2008		Primary Job Type DRILLING/COMPLETION - ORIGINAL			
Technical Result Success		Tech Result Details According to Plan		Tech Result Note	
Comment FRAC THE NIOBRARA - NO PROBLEMS TO REPORT					