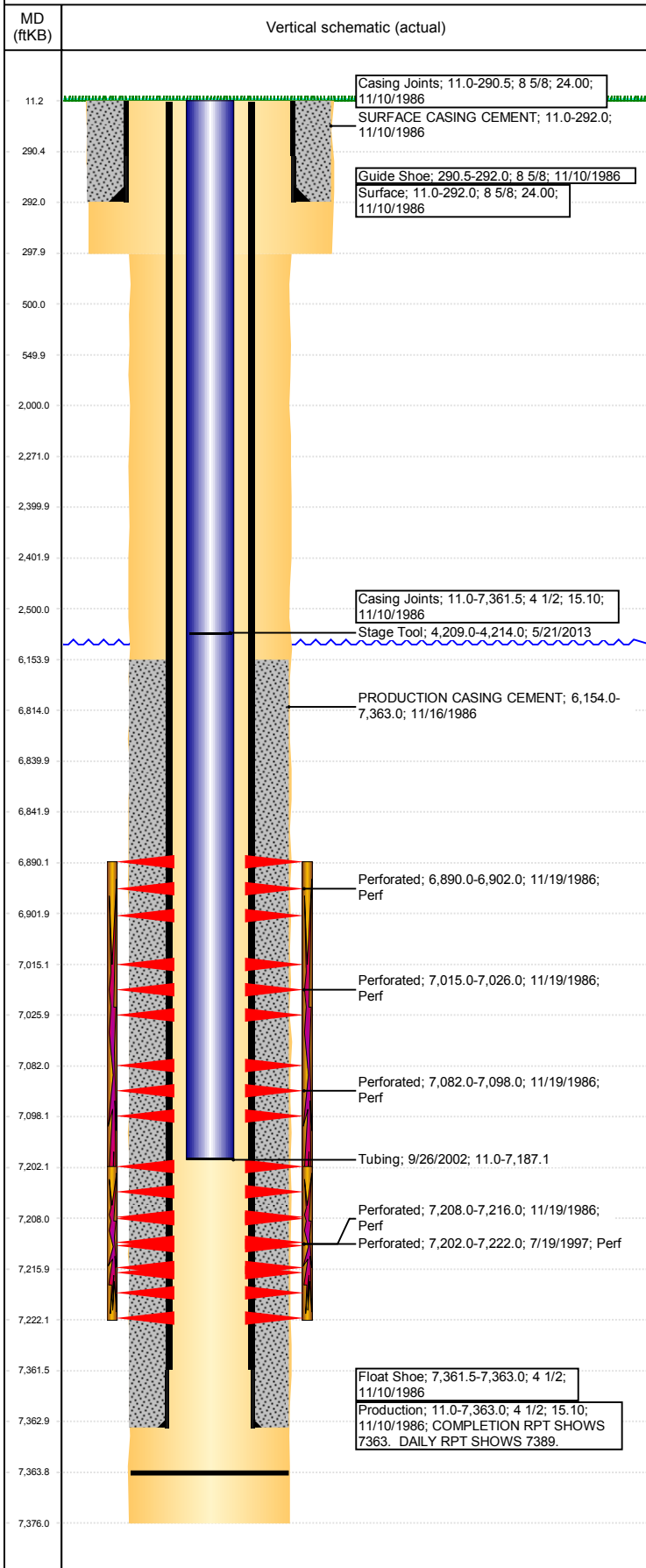


**Well Name: SHANNON 14-04**

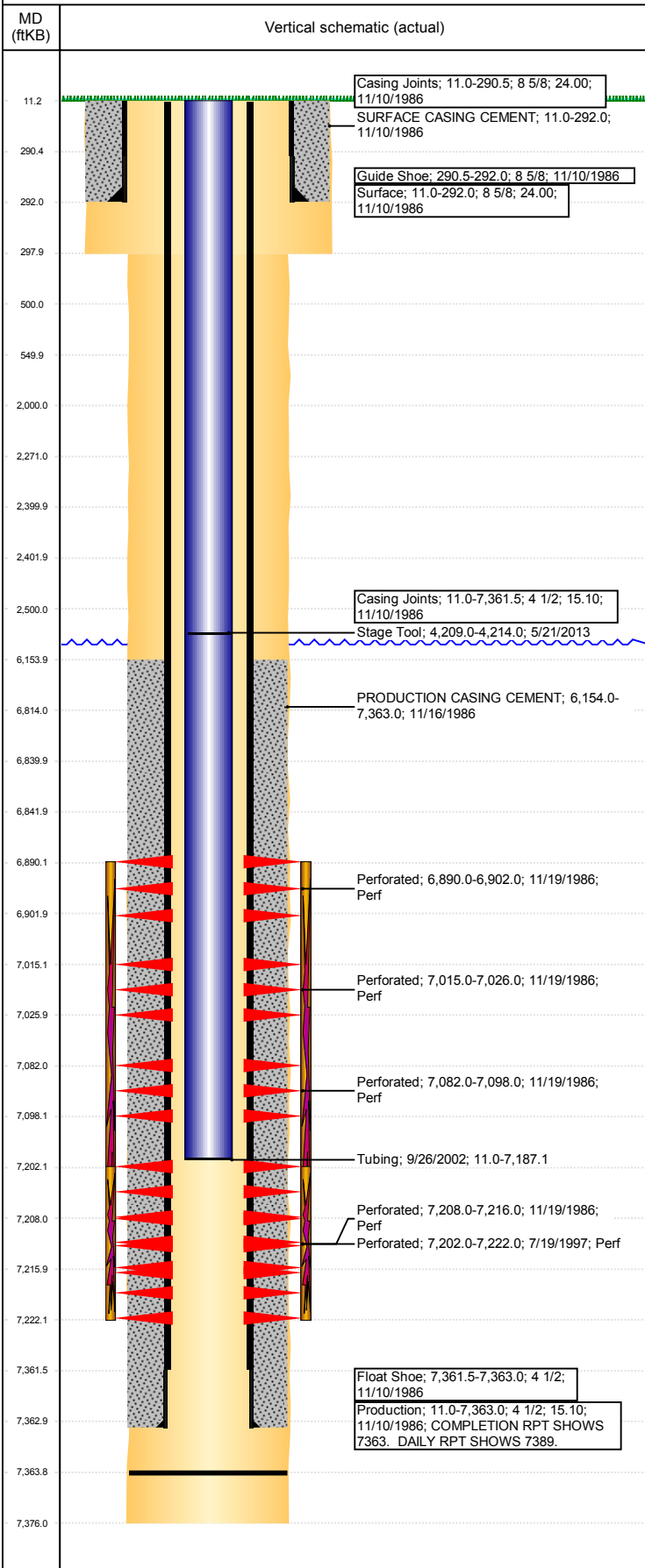
VERTICAL - ORIGINAL HOLE, 9/28/2017 1:38:04 PM



Well Header			
API 05-123-13236	Business Unit DJ BASIN	District 15	Well Config VERTICAL
Original KB Elevation (ft) 5,023	KB - GL / MSL (ftKB) 11.00	Spud Date 11/10/1986	P & A Date
Comment TD DISCREPANCY - ST COMPLETION RPT AND DAILY DRILLING SUMMARY SHOW 7376', WORKOVER RPTS SHOW 7383. PROD CSG SET DEPTH DISCREPANCY - DAILY DRILLING RPT SHOWS IT WAS SET @ 7389, ST COMPLETION RPT SHOWS IT WAS SET @ 7363.			
FRAC INTO SOUTH OFFSET.			
Directions To Well			
Current PBTD (mKB) ORIGINAL HOLE - 7,363.9			
Surface Location (Congressional)			
Quarter 3 NE	Quarter 4 NW	Section 14	Township 5
Twntshp N/S Dir N		Range 67	Range E/W Dir W
Bottom Hole Location			
North-South Distance (ft) 660.0		From N or S Line FNL	East-West Distance (ft) 1,980.0
		From E or W Line FWL	
Plug Back Total Depths			
Date	Depth (ftKB)	Method	Com
11/20/1986	7,376.0	CASED HOLE LOG	DEPTH LOGGER ON CBL
7/18/1997	7,196.0	TAG	
9/25/2002	7,363.9	TAG	C/O LAND TUBING
Wellbore Sections			
Section Des	Size (in)	Act Top, MD (ftKB)	Act Btm, MD (ftKB)
SURFACE	12 1/4	11	298
PRODUCTION	7 7/8	298	7,376
Zone Statuses			
Zone Name	Status Date	Status	Fluid Type
NIOBRARA-CO...	11/17/2009	PR	Water
NIOBRARA-CO...	10/27/2016	SI	
NIOBRARA	1/9/1987	PR	DRILLING/COMPLETION - ORIGINAL, 11/10/198...
CODELL	1/9/1987	PR	DRILLING/COMPLETION - ORIGINAL, 11/10/198...
CODELL	7/30/1997	PR	RE-FRAC, 7/17/1997 00:00
Casing Strings			
Csg Des	Run Date	OD (in)	Wt/Len (lb/ft)
Surface	11/10/1986	8 5/8	24.00
Production	11/10/1986	4 1/2	15.10
Cement			
Des	Start Date	Top (ftKB)	Btm (ftKB)
SURFACE CASING CEMENT	11/10/1986 00:00	11.0	292.0
PRODUCTION CASING CEMENT	11/16/1986 00:00	6,154.0	7,363.0
Tubing Components			
Item Des	OD (in)	Wt (lb/ft)	Grade
Perforation Data			
Linked Zone	Bnch/Stg	Sum of Entered Shot Total	Date
NIOBRARA, ORIGINAL HOLE	A	3	11/19/1986
NIOBRARA, ORIGINAL HOLE	B	5	11/19/1986
NIOBRARA, ORIGINAL HOLE	C	2	11/19/1986
CODELL, ORIGINAL HOLE		30	7/19/1997
CODELL, ORIGINAL HOLE		5	11/19/1986
<b>Total (Sum)</b>		<b>45</b>	
Other In Hole			
Run Date	Des	OD (in)	Top (ftKB)
Logs			
Date	Type	Top, MD (ftKB)	Btm, MD (ftKB)
11/15/1986	DIFL/DENS/GR/GRD/CAL	3,580.0	7,352.0
11/15/1986	DIFL/DENS/GR/GRD/CAL	3,580.0	7,352.0
11/15/1986	INDUCTION	292.0	7,390.0
11/20/1986	CEMENT BOND	5,960.0	7,299.0

**Well Name: SHANNON 14-04**

VERTICAL - ORIGINAL HOLE, 9/28/2017 1:38:05 PM



Logs			
Date	Type	Top, MD (ftKB)	Btm, MD (ftKB)
6/30/2017	GYRO	0.0	7,100.0
Stimulation Intervals			
Bnch/Stg	Start Date	Primary Job Type	
	11/21/1986	DRILLING/COMPLETION - ORIGINAL	
Comment LIMITED ENTRY FRAC.			
Volume Slurry Total (gal) 78,834.00			
Treat Pressure Avg (psi)	Treat Pressure Max (psi)	Slurry Rate Avg (bbl/min)	Slurry Rate Max (bbl/min)
	5,900.0	36.0	
Bnch/Stg	Start Date	Primary Job Type	
	7/17/1997	RE-FRAC	
Comment			
Volume Slurry Total (gal) 121,002.00			
Treat Pressure Avg (psi)	Treat Pressure Max (psi)	Slurry Rate Avg (bbl/min)	Slurry Rate Max (bbl/min)
		0.3	