

## WELL DETAILS: FL Greens 3N-5HZ

GL 4925' & KB 20' @ 4945.00ft (Precision 461) 4925.00  
 Northing 14552327.95 Easting 1694777.68 Latitude 40.0701240 Longitude -104.8056900

Design: OH (FL Greens 3N-5HZ/OH)

Created By: Seth Burstad Date: 6-26-2017

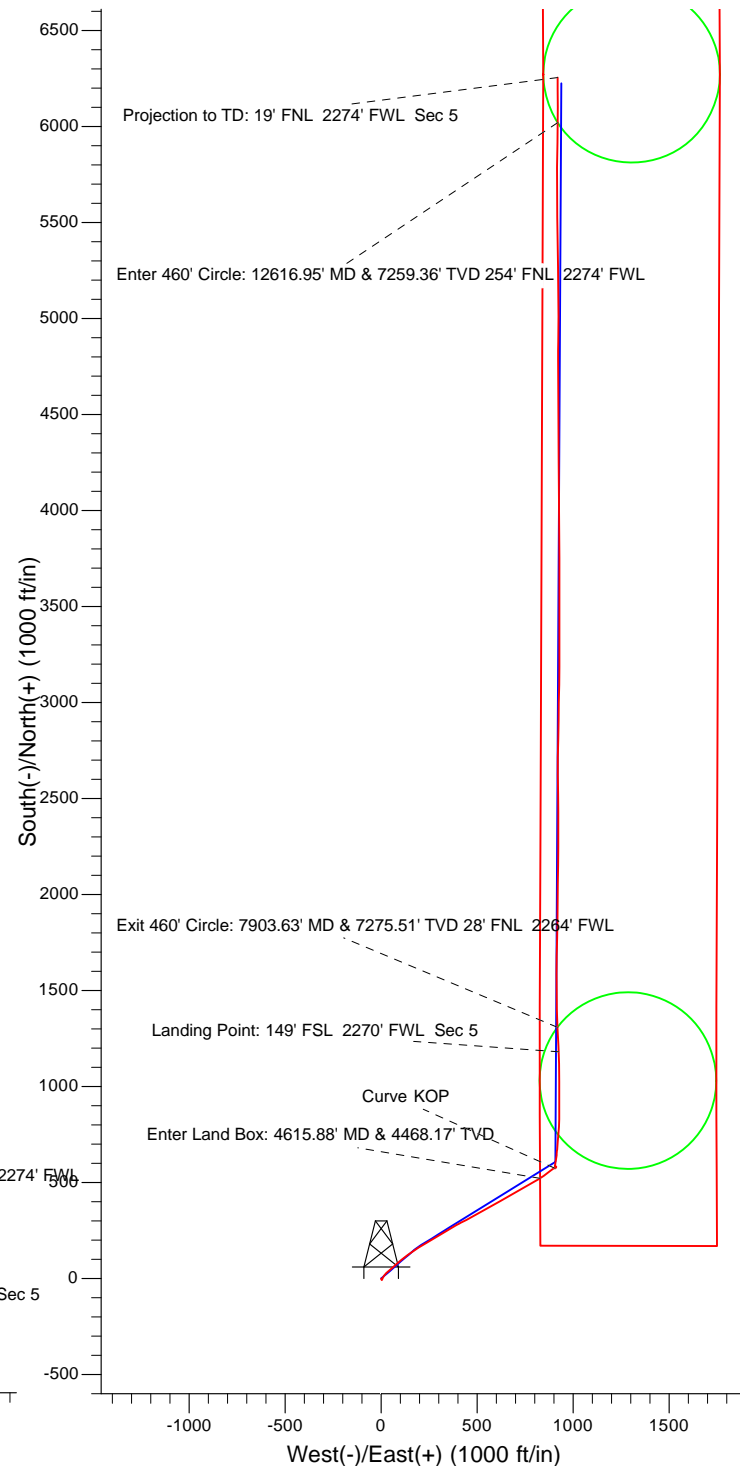
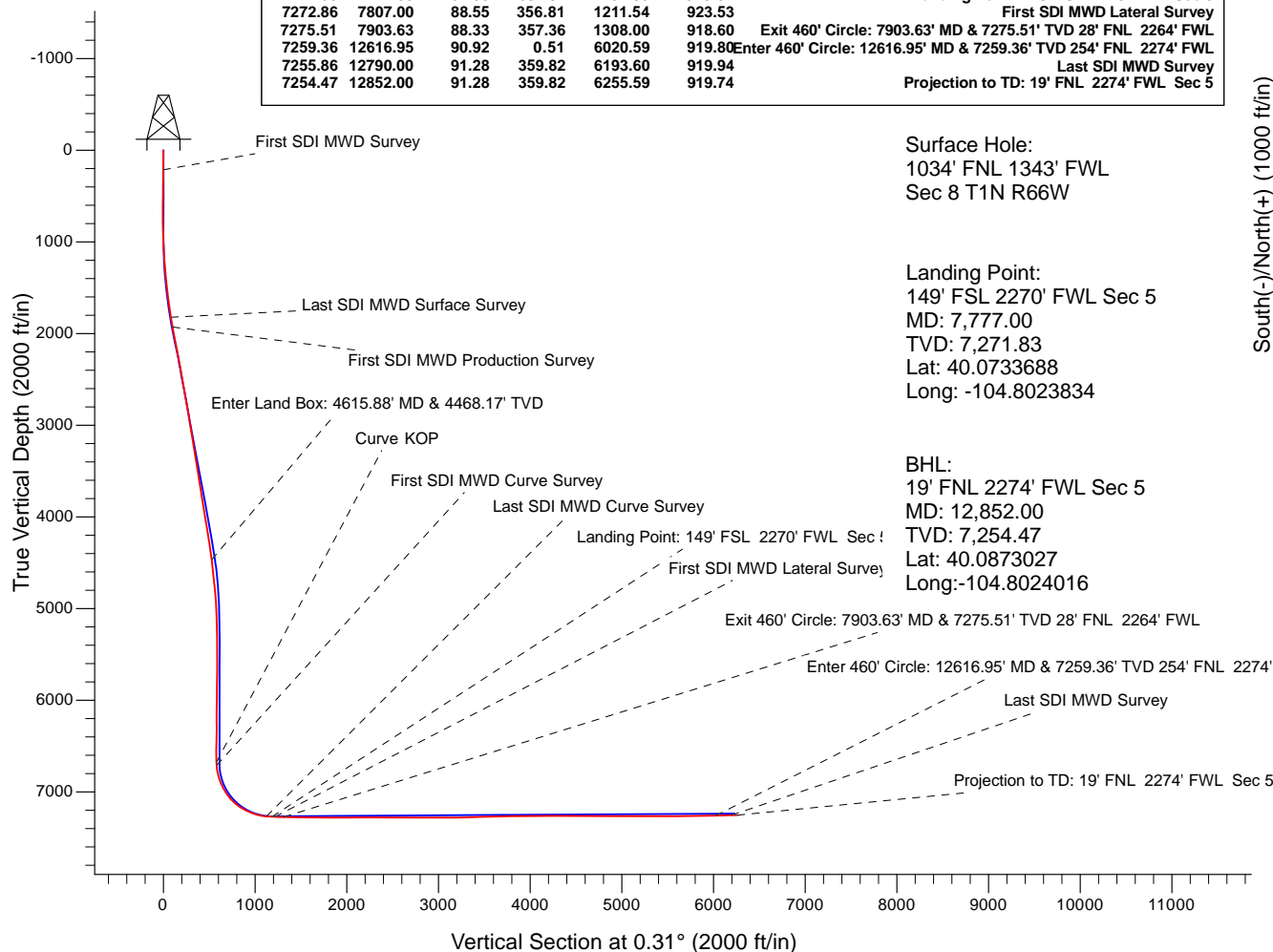
## PROJECT DETAILS: US Rockies Wattenberg Planning UTM83

Geodetic System: Universal Transverse Mercator (US Survey Feet)  
 Datum: North American Datum 1983  
 Ellipsoid: GRS 1980  
 Zone: Zone 13N (108 W to 102 W)

System Datum: Mean Sea Level  
 Local North: True

## ANNOTATIONS

TVD	MD	Inc	Azi	+N/-S	+E/-W	Annotation
215.00	215.00	0.41	167.55	-0.75	0.17	First SDI MWD Survey
1823.30	1833.00	13.61	47.85	82.58	87.38	Last SDI MWD Surface Survey
1929.67	1943.00	15.88	52.41	100.45	108.91	First SDI MWD Production Survey
4468.17	4615.88	13.06	58.33	522.98	828.08	Enter Land Box: 4615.88' MD & 4468.17' TVD
6678.56	6834.00	2.43	350.43	574.78	905.26	Curve KOP
6710.51	6866.00	3.95	353.35	576.54	905.02	First SDI MWD Curve Survey
7267.95	7715.00	85.33	359.05	1119.74	926.85	Last SDI MWD Curve Survey
7271.83	7777.00	87.50	357.54	1181.59	925.01	Landing Point: 149' FSL 2270' FWL Sec 5
7272.86	7807.00	88.55	356.81	1211.54	923.53	First SDI MWD Lateral Survey
7275.51	7903.63	88.33	357.36	1308.00	918.60	Exit 460' Circle: 7903.63' MD & 7275.51' TVD 28' FNL 2264' FWL
7259.36	12616.95	90.92	0.51	6020.59	919.80	Enter 460' Circle: 12616.95' MD & 7259.36' TVD 254' FNL 2274' FWL
7255.86	12790.00	91.28	359.82	6193.60	919.94	Last SDI MWD Survey
7254.47	12852.00	91.28	359.82	6255.59	919.74	Projection to TD: 19' FNL 2274' FWL Sec 5





# **US ROCKIES REGION PLANNING**

**US Rockies Wattenberg Planning UTM83**

**FL Greens 18-8HZ Pad**

**FL Greens 3N-5HZ**

**OH**

**Design: OH**

## **Standard Survey Report**

**26 June, 2017**



<b>Company:</b>	US ROCKIES REGION PLANNING	<b>Local Co-ordinate Reference:</b>	Well FL Greens 3N-5HZ
<b>Project:</b>	US Rockies Wattenberg Planning UTM83	<b>TVD Reference:</b>	GL 4925' & KB 20' @ 4945.00ft (Precision 461)
<b>Site:</b>	FL Greens 18-8HZ Pad	<b>MD Reference:</b>	GL 4925' & KB 20' @ 4945.00ft (Precision 461)
<b>Well:</b>	FL Greens 3N-5HZ	<b>North Reference:</b>	True
<b>Wellbore:</b>	OH	<b>Survey Calculation Method:</b>	Minimum Curvature
<b>Design:</b>	OH	<b>Database:</b>	Denver Sales Office

<b>Project</b>	US Rockies Wattenberg Planning UTM83		
<b>Map System:</b>	Universal Transverse Mercator (US Survey Feet)	<b>System Datum:</b>	Mean Sea Level
<b>Geo Datum:</b>	North American Datum 1983		
<b>Map Zone:</b>	Zone 13N (108 W to 102 W)		

Site	FL Greens 18-8HZ Pad, Site Center : FL Greens 3N-5HZ				
Site Position:		Northing:	14,552,327.94 usft	Latitude:	40.0701240
From:	Lat/Long	Easting:	1,694,777.68 usft	Longitude:	-104.8056900
Position Uncertainty:	0.00 ft	Slot Radius:	13.200 in	Grid Convergence:	0.13 °

Well	FL Greens 3N-5HZ, 1034' FNL 1343' FWL Sec 8 T1N R66W					
Well Position	+N/-S	0.00 ft	Northing:	14,552,327.94 usft	Latitude:	40.0701240
	+E/-W	0.00 ft	Easting:	1,694,777.68 usft	Longitude:	-104.8056900
Position Uncertainty		0.00 ft	Wellhead Elevation:	0.00 ft	Ground Level:	4,925.00 ft

<b>Wellbore</b>	OH				
<b>Magnetics</b>	<b>Model Name</b>	<b>Sample Date</b>	<b>Declination (°)</b>	<b>Dip Angle (°)</b>	<b>Field Strength (nT)</b>
	BGGM2016	5/24/2017	8.39	66.62	52,222

<b>Design</b>	OH				
<b>Audit Notes:</b>					
<b>Version:</b>	1.0	<b>Phase:</b>	ACTUAL	<b>Tie On Depth:</b>	0.00
<b>Vertical Section:</b>	<b>Depth From (TVD) (ft)</b>	<b>+N/-S (ft)</b>	<b>+E/-W (ft)</b>	<b>Direction (°)</b>	
	0.00	0.00	0.00	0.31	

<b>Survey Program</b>	<b>Date</b>	6/26/2017			
<b>From (ft)</b>	<b>To (ft)</b>	<b>Survey (Wellbore)</b>	<b>Tool Name</b>	<b>Description</b>	
215.00	1,833.00	Survey #1 - Surface (OH)	APC_ISCWSA REV 2 MWD+	Fixed:v2:crustal field declination	
1,943.00	12,852.00	Survey #2 - Production (OH)	APC_ISCWSA REV 2 MWD+	Fixed:v2:crustal field declination	

<b>Survey</b>										
<b>Measured Depth (ft)</b>	<b>Inclination (°)</b>	<b>Azimuth (°)</b>	<b>Vertical Depth (ft)</b>	<b>+N/-S (ft)</b>	<b>+E/-W (ft)</b>	<b>Vertical Section (ft)</b>	<b>Dogleg Rate (°/100ft)</b>	<b>Build Rate (°/100ft)</b>	<b>Turn Rate (°/100ft)</b>	
0.00	0.00	0.00	0.00	0.00	0.00	0.00	0.00	0.00	0.00	
215.00	0.41	167.55	215.00	-0.75	0.17	-0.75	0.19	0.19	0.00	
<b>First SDI MWD Survey</b>										
307.00	0.55	166.69	306.99	-1.50	0.34	-1.50	0.15	0.15	-0.93	
400.00	0.81	155.05	399.99	-2.53	0.72	-2.53	0.32	0.28	-12.52	
494.00	1.09	158.50	493.98	-3.97	1.33	-3.96	0.30	0.30	3.67	
587.00	1.53	156.34	586.95	-5.93	2.15	-5.92	0.48	0.47	-2.32	
680.00	0.64	124.01	679.93	-7.35	3.08	-7.34	1.13	-0.96	-34.76	
773.00	1.11	38.44	772.93	-6.94	4.07	-6.92	1.33	0.51	-92.01	
867.00	1.71	24.79	866.90	-4.95	5.22	-4.93	0.73	0.64	-14.52	

<b>Company:</b>	US ROCKIES REGION PLANNING	<b>Local Co-ordinate Reference:</b>	Well FL Greens 3N-5HZ
<b>Project:</b>	US Rockies Wattenberg Planning UTM83	<b>TVD Reference:</b>	GL 4925' & KB 20' @ 4945.00ft (Precision 461)
<b>Site:</b>	FL Greens 18-8HZ Pad	<b>MD Reference:</b>	GL 4925' & KB 20' @ 4945.00ft (Precision 461)
<b>Well:</b>	FL Greens 3N-5HZ	<b>North Reference:</b>	True
<b>Wellbore:</b>	OH	<b>Survey Calculation Method:</b>	Minimum Curvature
<b>Design:</b>	OH	<b>Database:</b>	Denver Sales Office

Survey									
Measured Depth (ft)	Inclination (°)	Azimuth (°)	Vertical Depth (ft)	+N/-S (ft)	+E/-W (ft)	Vertical Section (ft)	Dogleg Rate (°/100ft)	Build Rate (°/100ft)	Turn Rate (°/100ft)
961.00	2.81	16.34	960.82	-1.47	6.46	-1.43	1.22	1.17	-8.99
1,056.00	3.73	28.57	1,055.67	3.48	8.59	3.53	1.21	0.97	12.87
1,151.00	4.69	27.78	1,150.41	9.63	11.88	9.69	1.01	1.01	-0.83
1,246.00	5.44	34.02	1,245.04	16.80	16.21	16.89	0.98	0.79	6.57
1,339.00	6.54	42.22	1,337.53	24.37	22.24	24.49	1.50	1.18	8.82
1,434.00	7.30	48.94	1,431.84	32.35	30.42	32.51	1.17	0.80	7.07
1,528.00	9.00	50.49	1,524.89	40.95	40.60	41.17	1.82	1.81	1.65
1,622.00	11.24	47.19	1,617.42	51.85	52.99	52.14	2.46	2.38	-3.51
1,717.00	12.60	49.49	1,710.37	64.88	67.66	65.24	1.52	1.43	2.42
1,810.00	13.62	47.08	1,800.95	78.92	83.40	79.37	1.24	1.10	-2.59
1,833.00	13.61	47.85	1,823.30	82.58	87.38	83.05	0.79	-0.04	3.35
Last SDI MWD Surface Survey									
1,943.00	15.88	52.41	1,929.67	100.45	108.91	101.04	2.32	2.06	4.15
First SDI MWD Production Survey									
2,037.00	17.11	53.31	2,019.80	116.56	130.19	117.26	1.34	1.31	0.96
2,131.00	18.45	54.14	2,109.31	133.53	153.33	134.36	1.45	1.43	0.88
2,225.00	19.76	55.85	2,198.13	151.17	178.54	152.13	1.52	1.39	1.82
2,318.00	20.15	60.42	2,285.56	167.90	205.48	169.01	1.73	0.42	4.91
2,412.00	19.24	59.54	2,374.06	183.75	232.91	185.00	1.02	-0.97	-0.94
2,506.00	18.23	59.19	2,463.07	199.13	258.89	200.53	1.08	-1.07	-0.37
2,600.00	19.20	58.95	2,552.10	214.63	284.76	216.17	1.04	1.03	-0.26
2,693.00	18.99	57.67	2,639.99	230.61	310.65	232.29	0.50	-0.23	-1.38
2,785.00	19.52	59.20	2,726.84	246.49	336.50	248.30	0.80	0.58	1.66
2,880.00	17.89	58.73	2,816.82	262.19	362.61	264.15	1.72	-1.72	-0.49
2,974.00	18.38	61.12	2,906.15	276.84	387.92	278.94	0.95	0.52	2.54
3,069.00	20.46	63.62	2,995.74	291.45	415.92	293.70	2.36	2.19	2.63
3,162.00	19.39	63.05	3,083.17	305.67	444.24	308.07	1.17	-1.15	-0.61
3,257.00	17.45	62.81	3,173.30	319.33	470.97	321.87	2.04	-2.04	-0.25
3,352.00	18.12	60.16	3,263.76	333.19	496.46	335.87	1.11	0.71	-2.79
3,445.00	19.00	59.24	3,351.93	348.13	522.01	350.95	1.00	0.95	-0.99
3,539.00	17.40	58.44	3,441.22	363.31	547.14	366.27	1.72	-1.70	-0.85
3,634.00	17.35	61.44	3,531.89	377.52	571.68	380.61	0.94	-0.05	3.16
3,727.00	17.62	60.86	3,620.59	391.00	596.16	394.22	0.35	0.29	-0.62
3,820.00	18.13	60.22	3,709.10	405.04	621.01	408.40	0.59	0.55	-0.69
3,915.00	18.69	62.62	3,799.24	419.38	647.35	422.88	0.99	0.59	2.53
4,009.00	18.81	61.92	3,888.25	433.44	674.10	437.09	0.27	0.13	-0.74
4,103.00	19.12	60.47	3,977.15	448.17	700.86	451.95	0.60	0.33	-1.54
4,197.00	17.37	58.89	4,066.42	463.00	726.27	466.93	1.93	-1.86	-1.68
4,291.00	17.48	59.98	4,156.11	477.32	750.51	481.37	0.37	0.12	1.16
4,384.00	17.42	59.74	4,244.83	491.32	774.63	495.50	0.10	-0.06	-0.26
4,479.00	16.19	59.57	4,335.77	505.19	798.33	509.51	1.30	-1.29	-0.18
4,573.00	14.13	59.00	4,426.49	517.74	819.47	522.17	2.20	-2.19	-0.61
4,615.88	13.06	58.33	4,468.17	522.98	828.08	527.46	2.51	-2.49	-1.56
Enter Land Box: 4615.88' MD & 4468.17' TVD									

<b>Company:</b>	US ROCKIES REGION PLANNING	<b>Local Co-ordinate Reference:</b>	Well FL Greens 3N-5HZ
<b>Project:</b>	US Rockies Wattenberg Planning UTM83	<b>TVD Reference:</b>	GL 4925' & KB 20' @ 4945.00ft (Precision 461)
<b>Site:</b>	FL Greens 18-8HZ Pad	<b>MD Reference:</b>	GL 4925' & KB 20' @ 4945.00ft (Precision 461)
<b>Well:</b>	FL Greens 3N-5HZ	<b>North Reference:</b>	True
<b>Wellbore:</b>	OH	<b>Survey Calculation Method:</b>	Minimum Curvature
<b>Design:</b>	OH	<b>Database:</b>	Denver Sales Office

Survey									
Measured Depth (ft)	Inclination (°)	Azimuth (°)	Vertical Depth (ft)	+N/-S (ft)	+E/-W (ft)	Vertical Section (ft)	Dogleg Rate (°/100ft)	Build Rate (°/100ft)	Turn Rate (°/100ft)
4,666.00	11.82	57.40	4,517.11	528.72	837.23	533.24	2.51	-2.48	-1.86
4,760.00	10.88	54.75	4,609.27	539.03	852.58	543.63	1.14	-1.00	-2.82
4,854.00	9.37	52.16	4,701.81	548.84	865.87	553.52	1.68	-1.61	-2.76
4,949.00	8.50	50.13	4,795.65	558.09	877.37	562.83	0.97	-0.92	-2.14
5,043.00	7.43	52.58	4,888.75	566.24	887.53	571.03	1.19	-1.14	2.61
5,137.00	5.46	54.82	4,982.15	572.51	896.01	577.35	2.11	-2.10	2.38
5,262.00	3.05	61.05	5,106.79	577.54	903.78	582.43	1.96	-1.93	4.98
5,357.00	1.41	51.69	5,201.72	579.49	906.91	584.39	1.76	-1.73	-9.85
5,452.00	1.01	39.88	5,296.70	580.86	908.36	585.77	0.49	-0.42	-12.43
5,547.00	1.04	15.06	5,391.68	582.33	909.13	587.24	0.46	0.03	-26.13
5,641.00	0.90	93.73	5,485.67	583.11	910.08	588.03	1.31	-0.15	83.69
5,735.00	0.90	70.00	5,579.66	583.31	911.51	588.24	0.39	0.00	-25.24
5,830.00	0.62	210.03	5,674.66	583.12	911.96	588.05	1.51	-0.29	147.40
5,925.00	0.74	189.33	5,769.65	582.07	911.60	587.00	0.29	0.13	-21.79
6,020.00	0.84	188.63	5,864.64	580.78	911.40	585.70	0.11	0.11	-0.74
6,115.00	0.69	198.19	5,959.63	579.55	911.11	584.47	0.21	-0.16	10.06
6,209.00	1.32	205.06	6,053.62	578.03	910.48	582.95	0.68	0.67	7.31
6,303.00	0.57	251.44	6,147.61	576.90	909.58	581.81	1.08	-0.80	49.34
6,396.00	0.48	242.54	6,240.60	576.57	908.79	581.48	0.13	-0.10	-9.57
6,488.00	0.61	230.89	6,332.60	576.09	908.07	580.99	0.18	0.14	-12.66
6,583.00	0.65	231.72	6,427.59	575.43	907.26	580.33	0.04	0.04	0.87
6,678.00	0.77	228.34	6,522.59	574.68	906.36	579.57	0.13	0.13	-3.56
6,772.00	0.64	207.86	6,616.58	573.79	905.64	578.68	0.30	-0.14	-21.79
6,834.00	2.43	350.43	6,678.56	574.78	905.26	579.67	4.78	2.89	229.96
<b>Curve KOP</b>									
6,866.00	3.95	353.35	6,710.51	576.54	905.02	581.43	4.78	4.75	9.11
<b>First SDI MWD Curve Survey</b>									
6,960.00	13.25	5.93	6,803.36	590.51	905.76	595.40	10.04	9.89	13.38
7,055.00	22.20	11.21	6,893.76	619.00	910.38	623.92	9.56	9.42	5.56
7,149.00	29.63	3.74	6,978.27	659.68	915.36	664.62	8.62	7.90	-7.95
7,244.00	37.94	5.72	7,057.17	712.26	919.81	717.23	8.82	8.75	2.08
7,338.00	50.23	3.86	7,124.56	777.31	925.14	782.31	13.15	13.07	-1.98
7,432.00	58.79	0.06	7,179.10	853.71	927.62	858.72	9.68	9.11	-4.04
7,527.00	66.95	0.22	7,222.38	938.19	927.83	943.19	8.59	8.59	0.17
7,621.00	75.68	359.77	7,252.46	1,027.15	927.81	1,032.15	9.30	9.29	-0.48
7,715.00	85.33	359.05	7,267.95	1,119.74	926.85	1,124.74	10.29	10.27	-0.77
<b>Last SDI MWD Curve Survey</b>									
7,777.00	87.50	357.54	7,271.83	1,181.59	925.01	1,186.58	4.26	3.50	-2.44
<b>Landing Point: 149' FSL 2270' FWL Sec 5</b>									
7,807.00	88.55	356.81	7,272.86	1,211.54	923.53	1,216.51	4.26	3.50	-2.43
<b>First SDI MWD Lateral Survey</b>									
7,902.00	88.32	357.33	7,275.46	1,306.38	918.68	1,311.33	0.60	-0.24	0.55
7,903.63	88.33	357.36	7,275.51	1,308.00	918.60	1,312.95	2.21	0.91	2.01
<b>Exit 460' Circle: 7903.63' MD &amp; 7275.51' TVD 28' FNL 2264' FWL</b>									

<b>Company:</b>	US ROCKIES REGION PLANNING	<b>Local Co-ordinate Reference:</b>	Well FL Greens 3N-5HZ
<b>Project:</b>	US Rockies Wattenberg Planning UTM83	<b>TVD Reference:</b>	GL 4925' & KB 20' @ 4945.00ft (Precision 461)
<b>Site:</b>	FL Greens 18-8HZ Pad	<b>MD Reference:</b>	GL 4925' & KB 20' @ 4945.00ft (Precision 461)
<b>Well:</b>	FL Greens 3N-5HZ	<b>North Reference:</b>	True
<b>Wellbore:</b>	OH	<b>Survey Calculation Method:</b>	Minimum Curvature
<b>Design:</b>	OH	<b>Database:</b>	Denver Sales Office

Survey									
Measured Depth (ft)	Inclination (°)	Azimuth (°)	Vertical Depth (ft)	+N/-S (ft)	+E/-W (ft)	Vertical Section (ft)	Dogleg Rate (°/100ft)	Build Rate (°/100ft)	Turn Rate (°/100ft)
7,997.00	89.19	359.24	7,277.52	1,401.31	915.84	1,406.24	2.21	0.92	2.01
8,091.00	89.70	358.64	7,278.43	1,495.28	914.10	1,500.21	0.84	0.54	-0.64
8,185.00	89.60	0.59	7,279.01	1,589.28	913.46	1,594.19	2.08	-0.11	2.07
8,278.00	89.19	0.93	7,279.99	1,682.26	914.70	1,687.19	0.57	-0.44	0.37
8,372.00	88.89	1.26	7,281.56	1,776.23	916.49	1,781.16	0.47	-0.32	0.35
8,465.00	90.74	1.26	7,281.86	1,869.20	918.54	1,874.15	1.99	1.99	0.00
8,560.00	90.54	0.48	7,280.80	1,964.19	919.98	1,969.14	0.85	-0.21	-0.82
8,653.00	90.34	0.62	7,280.09	2,057.18	920.87	2,062.13	0.26	-0.22	0.15
8,746.00	90.54	0.42	7,279.38	2,150.17	921.72	2,155.13	0.30	0.22	-0.22
8,840.00	90.74	0.19	7,278.33	2,244.17	922.22	2,249.12	0.32	0.21	-0.24
8,935.00	89.53	0.02	7,278.10	2,339.16	922.39	2,344.12	1.29	-1.27	-0.18
9,029.00	89.53	359.87	7,278.87	2,433.16	922.30	2,438.11	0.16	0.00	-0.16
9,123.00	89.12	359.00	7,279.98	2,527.15	921.38	2,532.10	1.02	-0.44	-0.93
9,217.00	89.56	359.94	7,281.06	2,621.14	920.51	2,626.08	1.10	0.47	1.00
9,310.00	89.93	0.55	7,281.48	2,714.13	920.90	2,719.08	0.77	0.40	0.66
9,405.00	90.57	1.22	7,281.06	2,809.12	922.37	2,814.07	0.98	0.67	0.71
9,499.00	90.54	1.08	7,280.15	2,903.10	924.26	2,908.06	0.15	-0.03	-0.15
9,594.00	89.02	0.84	7,280.52	2,998.08	925.85	3,003.05	1.62	-1.60	-0.25
9,687.00	90.44	0.68	7,280.95	3,091.07	927.08	3,096.04	1.54	1.53	-0.17
9,781.00	90.60	0.47	7,280.10	3,185.06	928.03	3,190.03	0.28	0.17	-0.22
9,874.00	91.31	0.10	7,278.55	3,278.05	928.49	3,283.02	0.86	0.76	-0.40
9,969.00	91.61	359.87	7,276.13	3,373.01	928.46	3,377.99	0.40	0.32	-0.24
10,063.00	91.75	0.24	7,273.38	3,466.97	928.55	3,471.95	0.42	0.15	0.39
10,158.00	90.87	0.08	7,271.20	3,561.95	928.82	3,566.92	0.94	-0.93	-0.17
10,253.00	91.38	359.66	7,269.34	3,656.93	928.60	3,661.90	0.70	0.54	-0.44
10,349.00	90.67	0.00	7,267.62	3,752.91	928.32	3,757.88	0.82	-0.74	0.35
10,442.00	90.91	359.72	7,266.34	3,845.90	928.09	3,850.87	0.40	0.26	-0.30
10,536.00	91.34	359.31	7,264.49	3,939.88	927.30	3,944.84	0.63	0.46	-0.44
10,630.00	90.13	359.63	7,263.29	4,033.87	926.43	4,038.82	1.33	-1.29	0.34
10,722.00	90.30	359.07	7,262.94	4,125.86	925.38	4,130.81	0.64	0.18	-0.61
10,817.00	89.87	0.25	7,262.80	4,220.86	924.82	4,225.80	1.32	-0.45	1.24
10,910.00	90.00	359.94	7,262.91	4,313.86	924.97	4,318.80	0.36	0.14	-0.33
11,005.00	90.67	359.59	7,262.35	4,408.85	924.58	4,413.79	0.80	0.71	-0.37
11,099.00	89.09	359.40	7,262.55	4,502.85	923.76	4,507.78	1.69	-1.68	-0.20
11,193.00	89.63	358.93	7,263.60	4,596.83	922.39	4,601.75	0.76	0.57	-0.50
11,288.00	90.00	0.31	7,263.90	4,691.82	921.76	4,696.74	1.50	0.39	1.45
11,383.00	90.77	359.95	7,263.27	4,786.82	921.97	4,791.74	0.89	0.81	-0.38
11,478.00	88.86	0.26	7,263.57	4,881.82	922.15	4,886.73	2.04	-2.01	0.33
11,573.00	89.16	359.83	7,265.21	4,976.80	922.22	4,981.72	0.55	0.32	-0.45
11,666.00	89.53	359.92	7,266.28	5,069.80	922.02	5,074.71	0.41	0.40	0.10
11,760.00	89.23	0.11	7,267.29	5,163.79	922.04	5,168.70	0.38	-0.32	0.20
11,854.00	90.13	359.50	7,267.82	5,257.79	921.72	5,262.70	1.16	0.96	-0.65
11,949.00	89.93	359.24	7,267.77	5,352.78	920.68	5,357.68	0.35	-0.21	-0.27

<b>Company:</b>	US ROCKIES REGION PLANNING	<b>Local Co-ordinate Reference:</b>	Well FL Greens 3N-5HZ
<b>Project:</b>	US Rockies Wattenberg Planning UTM83	<b>TVD Reference:</b>	GL 4925' & KB 20' @ 4945.00ft (Precision 461)
<b>Site:</b>	FL Greens 18-8HZ Pad	<b>MD Reference:</b>	GL 4925' & KB 20' @ 4945.00ft (Precision 461)
<b>Well:</b>	FL Greens 3N-5HZ	<b>North Reference:</b>	True
<b>Wellbore:</b>	OH	<b>Survey Calculation Method:</b>	Minimum Curvature
<b>Design:</b>	OH	<b>Database:</b>	Denver Sales Office

Survey									
Measured Depth (ft)	Inclination (°)	Azimuth (°)	Vertical Depth (ft)	+N/-S (ft)	+E/-W (ft)	Vertical Section (ft)	Dogleg Rate (°/100ft)	Build Rate (°/100ft)	Turn Rate (°/100ft)
12,044.00	90.47	359.07	7,267.44	5,447.77	919.28	5,452.66	0.60	0.57	-0.18
12,138.00	90.97	358.86	7,266.26	5,541.75	917.58	5,546.63	0.58	0.53	-0.22
12,231.00	91.58	359.75	7,264.19	5,634.71	916.45	5,639.59	1.16	0.66	0.96
12,325.00	91.01	359.52	7,262.06	5,728.69	915.85	5,733.56	0.65	-0.61	-0.24
12,419.00	90.20	1.15	7,261.07	5,822.68	916.40	5,827.55	1.94	-0.86	1.73
12,512.00	90.40	1.15	7,260.58	5,915.66	918.27	5,920.54	0.22	0.22	0.00
12,604.00	90.87	0.60	7,259.56	6,007.64	919.67	6,012.53	0.79	0.51	-0.60
12,616.95	90.92	0.51	7,259.36	6,020.59	919.80	6,025.48	0.78	0.36	-0.69
<b>Enter 460' Circle: 12616.95' MD &amp; 7259.36' TVD 254' FNL 2274' FWL</b>									
12,698.00	91.21	359.95	7,257.86	6,101.62	920.12	6,106.51	0.78	0.36	-0.69
12,790.00	91.28	359.82	7,255.86	6,193.60	919.94	6,198.49	0.16	0.08	-0.14
<b>Last SDI MWD Survey</b>									
12,852.00	91.28	359.82	7,254.47	6,255.59	919.74	6,260.47	0.00	0.00	0.00
<b>Projection to TD: 19' FNL 2274' FWL Sec 5</b>									

Design Annotations				
Measured Depth (ft)	Vertical Depth (ft)	Local Coordinates		Comment
		+N/-S (ft)	+E/-W (ft)	
215.00	215.00	-0.75	0.17	First SDI MWD Survey
1,833.00	1,823.30	82.58	87.38	Last SDI MWD Surface Survey
1,943.00	1,929.67	100.45	108.91	First SDI MWD Production Survey
4,615.88	4,468.17	522.98	828.08	Enter Land Box: 4615.88' MD & 4468.17' TVD
6,834.00	6,678.56	574.78	905.26	Curve KOP
6,866.00	6,710.51	576.54	905.02	First SDI MWD Curve Survey
7,715.00	7,267.95	1,119.74	926.85	Last SDI MWD Curve Survey
7,777.00	7,271.83	1,181.59	925.01	Landing Point: 149' FSL 2270' FWL Sec 5
7,807.00	7,272.86	1,211.54	923.53	First SDI MWD Lateral Survey
7,903.63	7,275.51	1,308.00	918.60	Exit 460' Circle: 7903.63' MD & 7275.51' TVD 28' FNL 2264' FWL
12,616.95	7,259.36	6,020.59	919.80	Enter 460' Circle: 12616.95' MD & 7259.36' TVD 254' FNL 2274' FWL
12,790.00	7,255.86	6,193.60	919.94	Last SDI MWD Survey
12,852.00	7,254.47	6,255.59	919.74	Projection to TD: 19' FNL 2274' FWL Sec 5

Checked By: _____	Approved By: _____	Date: _____
-------------------	--------------------	-------------