

9/15/17

HALLIBURTON

iCem® Service

CHEVRON - MID-CONTINENT-EBUS

For: AARON NELTZER

Date: Friday, September 15, 2017

SKINNER RIDGE 698-28-02

SKINNER RIDGE 698-28-02

904303269

Job Date: Friday, September 15, 2017

Sincerely,

ANTHONY ANDREWS

2.0 Real-Time Job Summary

2.1 Job Event Log

Type	Seq. No.	Activity	Graph Label	Date	Time	Source	DH Density (ppg)	Comb Pump Rate (bbl/min)	PS Pump Press (psi)	Pump Sg Tot (bbl)	Comments
Event	1	Call Out	Call Out	9/15/2017	03:00:00	USER					
Event	2	Pre-Convoy Safety Meeting	Pre-Convoy Safety Meeting	9/15/2017	04:30:00	USER					
Event	3	Crew Leave Yard	Crew Leave Yard	9/15/2017	04:45:00	USER					
Event	4	Arrive At Loc	Arrive At Loc	9/15/2017	06:30:00	USER					
Event	5	Assessment Of Location Safety Meeting	Assessment Of Location Safety Meeting	9/15/2017	06:40:00	USER					
Event	6	Other	Spot Equipment	9/15/2017	06:45:00	USER					
Event	7	Pre-Rig Up Safety Meeting	Pre-Rig Up Safety Meeting	9/15/2017	06:50:00	USER					
Event	8	Rig-Up Equipment	Rig-Up Equipment	9/15/2017	07:00:00	USER					
Event	9	Pre-Job Safety Meeting	Pre-Job Safety Meeting	9/15/2017	08:33:44	USER					
Event	10	Start Job	Start Job	9/15/2017	08:56:42	COM5					RTNR @ 1402' 2 3/8" 4.78/FT TBG INSIDE 4 1/2" 11.64/FT CSG. 7 7/8" OH FROM 1402 TO 1135' 8 5/8" 248/FT FROM SURFACE TO 1135' PERF @ 1553' BRIDGE PLUG @ 1682 W/ SAND TO 1662. WATER TEST: PH: 6.5 POTASSIUM: 450 CHLORIDES: 0 SULFATES: <200 TEMP: 62 DEGREES
Event	11	Test Lines	Test Lines	9/15/2017	09:00:47	COM5	8.33	0.00	3670.00	1.0	3000 PSI TEST
Event	12	Break Formation	Break Formation	9/15/2017	09:05:31	COM5	8.33	2.00	1640.00	10.0	PUMPED 10 BBL INJECTION TEST, 2 BPM @ 1640 PSI

iCem Service

(v. 4.2.393)

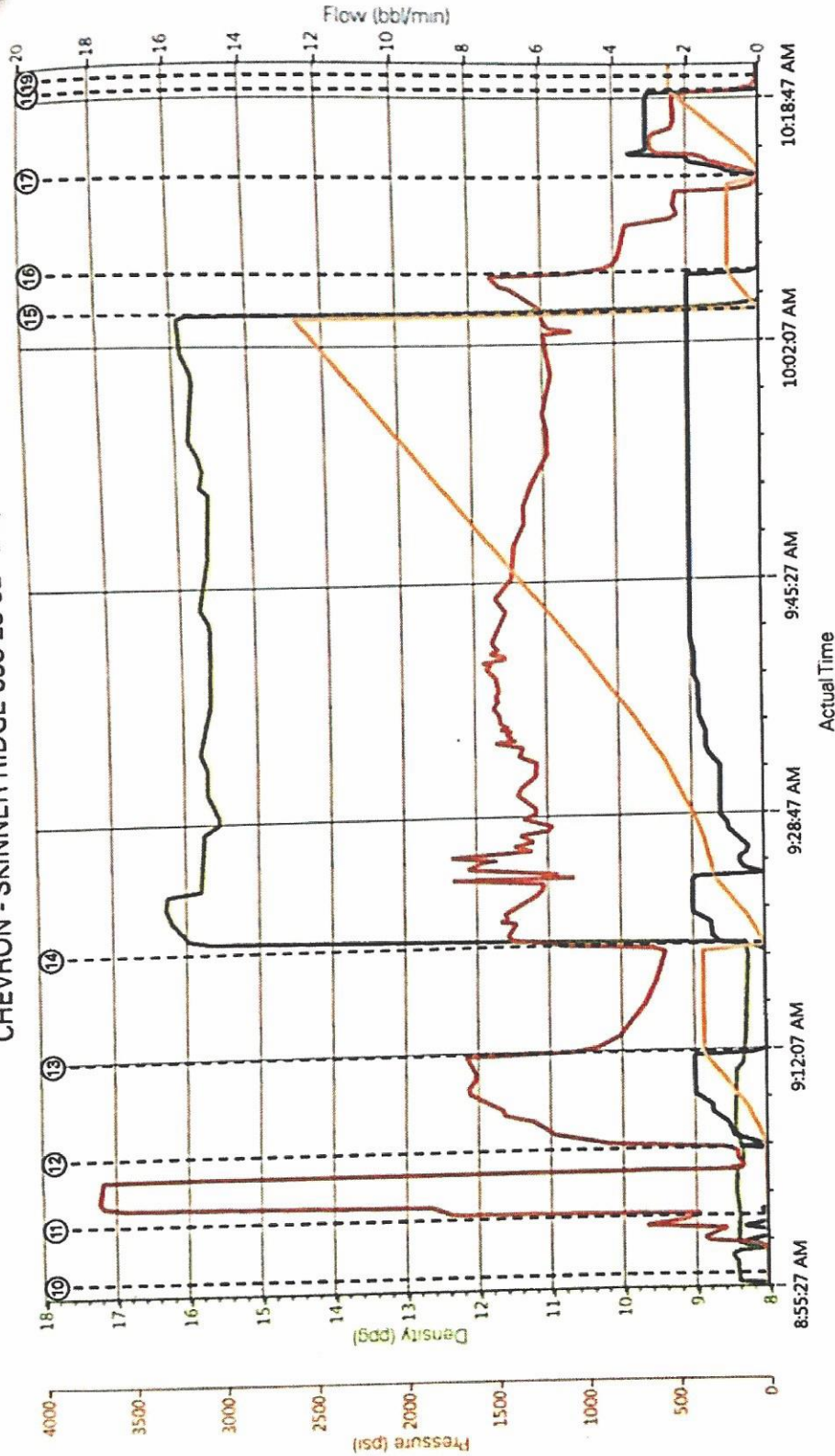
Created: Friday, September 15, 2017

Customer: CHEVRON - MID-CONTINE

Job: 96

**THANK YOU FOR CHOOSING
HALLIBURTON CEMENTING
OF GRAND JUNCTION,
COLORADO
ANTHONY ANDREWS AND
CREW**

CHEVRON - SKINNER RIDGE 698-28-02 - 2 3/8" SQUEEZE



DH Density (ppg) Comb Pump Rate (bbl/min) PS Pump Press (psi) Pump Stg Tot (bbl)

- | | | | |
|---|-----------------------------|---------------------|--|
| ① Call Out | ⑦ Pre-Rig Up Safety Meeting | ⑬ Shutdown | ⑲ End Job |
| ② Pre-Convoy Safety Meeting | ⑧ Rig-Up Equipment | ⑭ Pump Lead Cement | ⑳ Post-Job Safety Meeting (Pre Rig-Down) |
| ③ Crew Leave Yard | ⑨ Pre-Job Safety Meeting | ⑮ Pump Displacement | ㉑ Rig-Down Equipment |
| ④ Arrive At Loc | ⑩ Start Job | ⑯ Shutdown | ㉒ Pre-Convoy Safety Meeting |
| ⑤ Assessment Of Location Safety Meeting | ⑪ Test Lines | ⑰ Reverse Circ Well | ㉓ Crew Leave Location |
| ⑥ Spot Equipment | ⑫ Break Formation | ⑱ Shutdown | |

▼ **HALLIBURTON** | iCem® Service

Edit

Created: 2017-09-15 08:26:09, Version: 4.2.393

Customer: CHEVRON - MID-CONTINENT-EBUS
Representative: ANTHONY ANDREWS

Job Date: 9/15/2017 8:30:22 AM
Sales Order #: 904303269

Well: SKINNER RIDGE 698-28-02
ELITE 4: JAMES LEIST/ANTHONY ANDREWS