

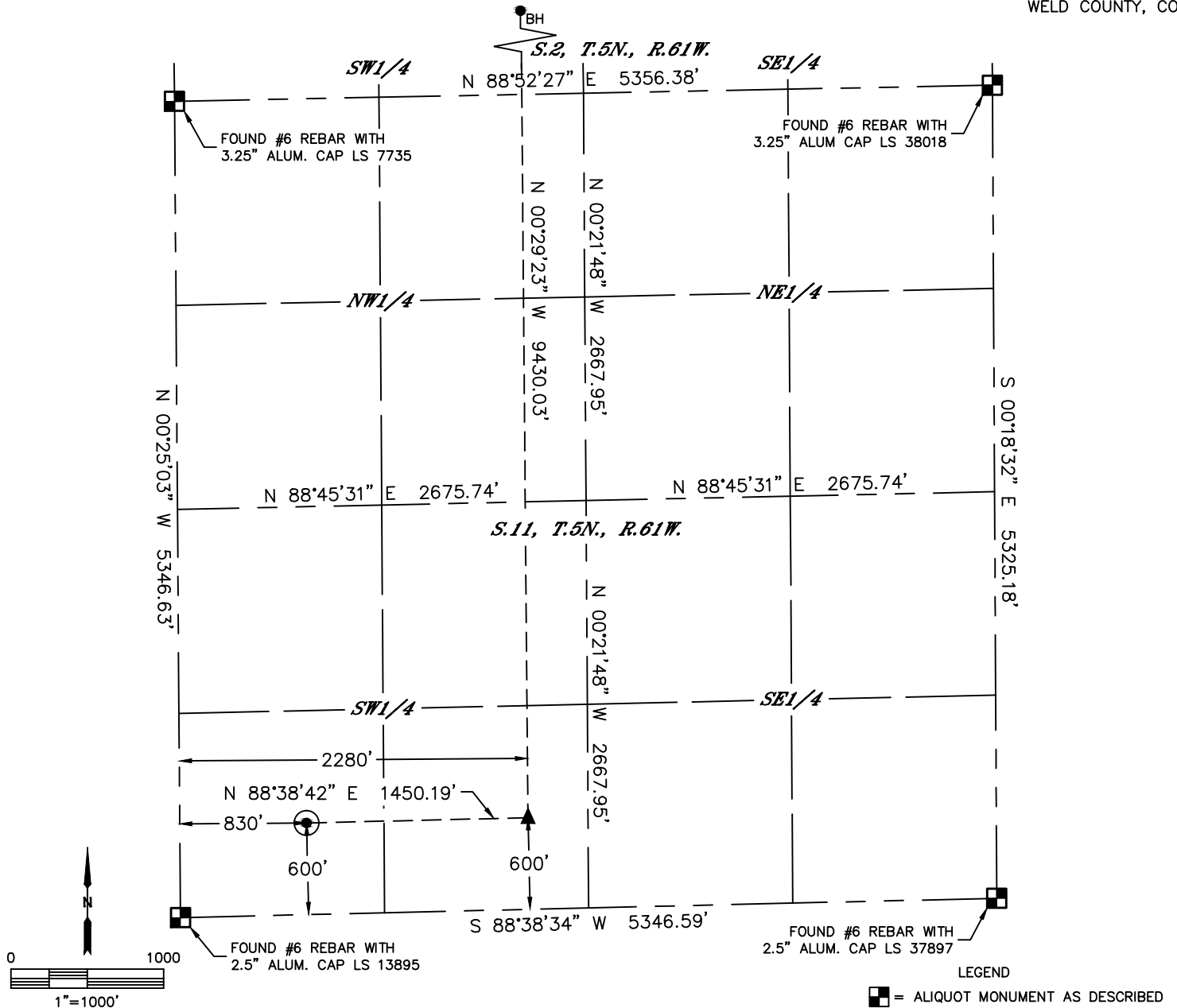


Lat40°, Inc. 6250 W. 10th Street, Unit 2, Greeley, CO 970-515-5294

WELL LOCATION CERTIFICATE

GREEN GRASS 11-561-6

SECTION: 11
TOWNSHIP: 5N
RANGE: 61W
6TH. P.M.
WELD COUNTY, CO



CLIENT: APOLLO OPERATING, LLC					LANDMAN: JESSE WHITE				
INSTRUMENT OPERATOR: SCOTT SHERARD					SURVEY DATE: 4/26/2017		SURFACE USE: RANGELAND		
SHL FOOTAGE				SHL LAT °	SHL LONG °	SHL PDOP	SHL ELEV (FT.)	SHL 1/4/1/4	SHL S-T-R
600	FSL	830	FWL	40.41015	-104.18220	2.4	4700	SWSW	11-5N-61W

BHL FOOTAGE				BHL LAT °	BHL LONG °	BHL S-T-R	EP LAT °	EP LONG °	EP S-T-R
600	FNL	2290	FWL	40.43606	-104.17677	2-5N-61W	40.41018	-104.17699	11-5N-61W

- LEGEND
- = ALIQUOT MONUMENT AS DESCRIBED
 - = CALCULATED POSITION
 - = SURFACE HOLE LOCATION (SHL)
 - ▲ = ENTRY POINT LOCATION (EP)
 - BH = BOTTOM HOLE LOCATION (BHL)
 - ⊙ = EXISTING WELL
 - ⊙ = ABANDONED WELL

NOTE:

- 1) Bearings shown are Grid Bearings of the Colorado State Plane Coordinate System, North Zone, North American Datum 1983. The lineal dimensions as contained herein are based upon the "U.S. Survey Foot."
- 2) Distances to section lines measured at 90 degrees from said section lines.
- 3) Ground elevations are based on an observed GPS elevation (NAVD 1988 DATUM).
- 4) Latitude and Longitude shown are (NAD 83 DATUM).
- 5) IMPROVEMENTS: See LOCATION DRAWING for all visible improvements within 500' of oil and gas location.
- 6) This map does not represent a boundary survey.

NEAREST CULTURAL ITEMS	
BUILDING	5280'+
BUILDING UNIT	5280'+
HIGH OCCUPANCY BUILDING UNIT	5280'+
DESIGNATED OUTSIDE ACTIVITY AREA	5280'+
PUBLIC ROAD (COUNTY ROAD 62)	±4752' N
ABOVE GROUND UTILITY	±560' S
RAILROAD	5280'+
PROPERTY LINE	±600' S

COLORADO LICENSED
KYLE EUGENE RUTZ
PROFESSIONAL LAND SURVEYOR
38307
SHEET 1 OF 2
Kyle E. Rutz—On Behalf of Lat40°
Colorado Licensed Professional
Land Surveyor No. 38307
DATE: 05/24/2017
PROJECT#: 2017036

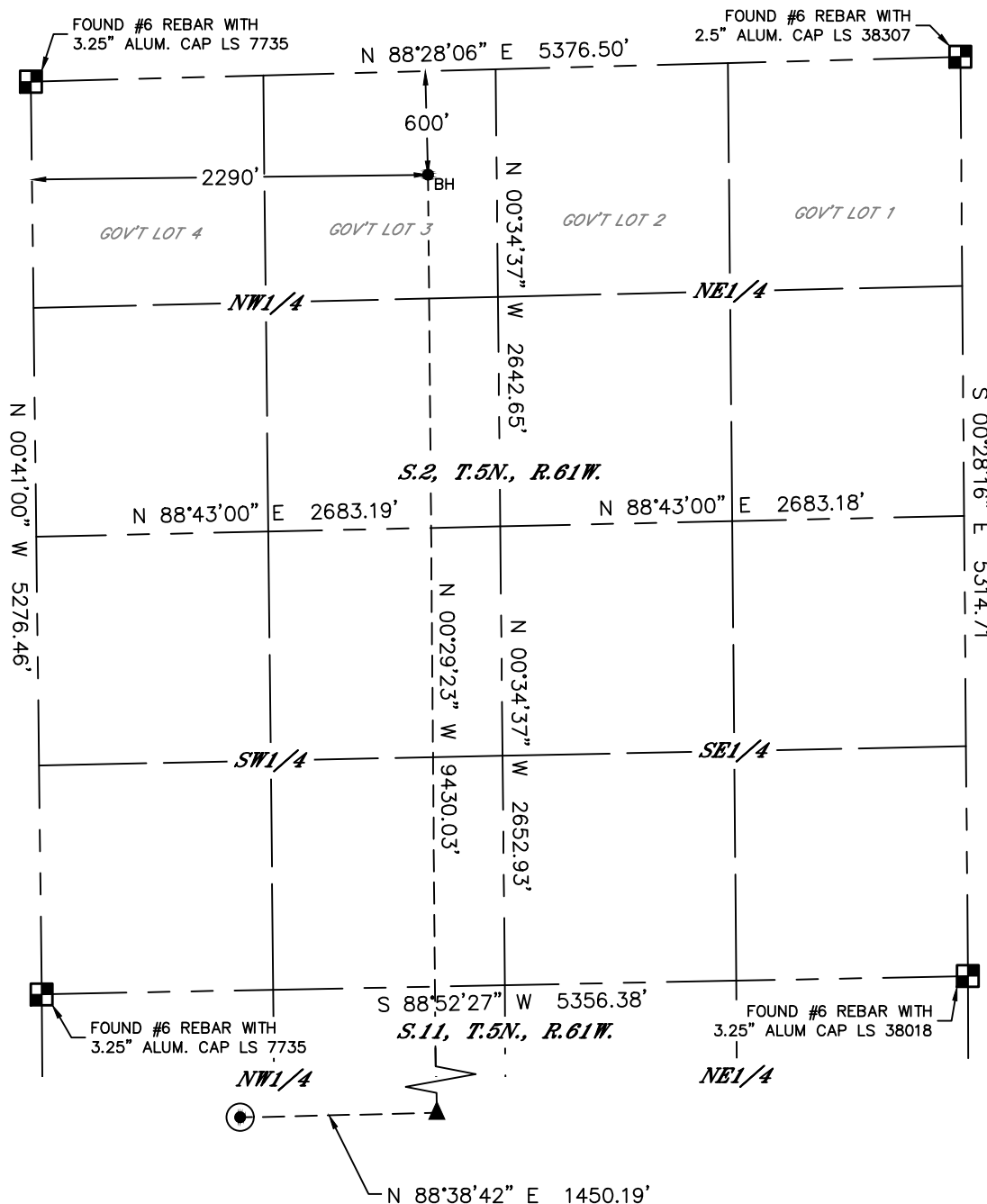


Lat40°, Inc. 6250 W. 10th Street, Unit 2, Greeley, CO 970-515-5294

WELL LOCATION CERTIFICATE

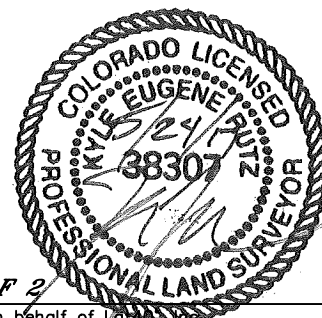
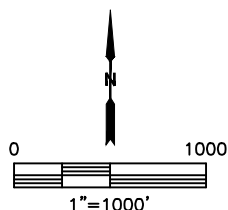
GREEN GRASS 11-561-6

SECTION: 11
TOWNSHIP: 5N
RANGE: 61W
6TH. P.M.
WELD COUNTY, CO



LEGEND

- = ALIQUOT MONUMENT AS DESCRIBED
- = CALCULATED POSITION
- = SURFACE HOLE LOCATION (SHL)
- = ENTRY POINT LOCATION (EP)
- = BOTTOM HOLE LOCATION (BHL)
- = EXISTING WELL
- = ABANDONED WELL



SHEET 2 OF 2

Kyle E. Rutz—On behalf of Lat40°
Colorado Licensed Professional Land Surveyor No. 38307
DATE: 05/24/2017
PROJECT#: 2017036