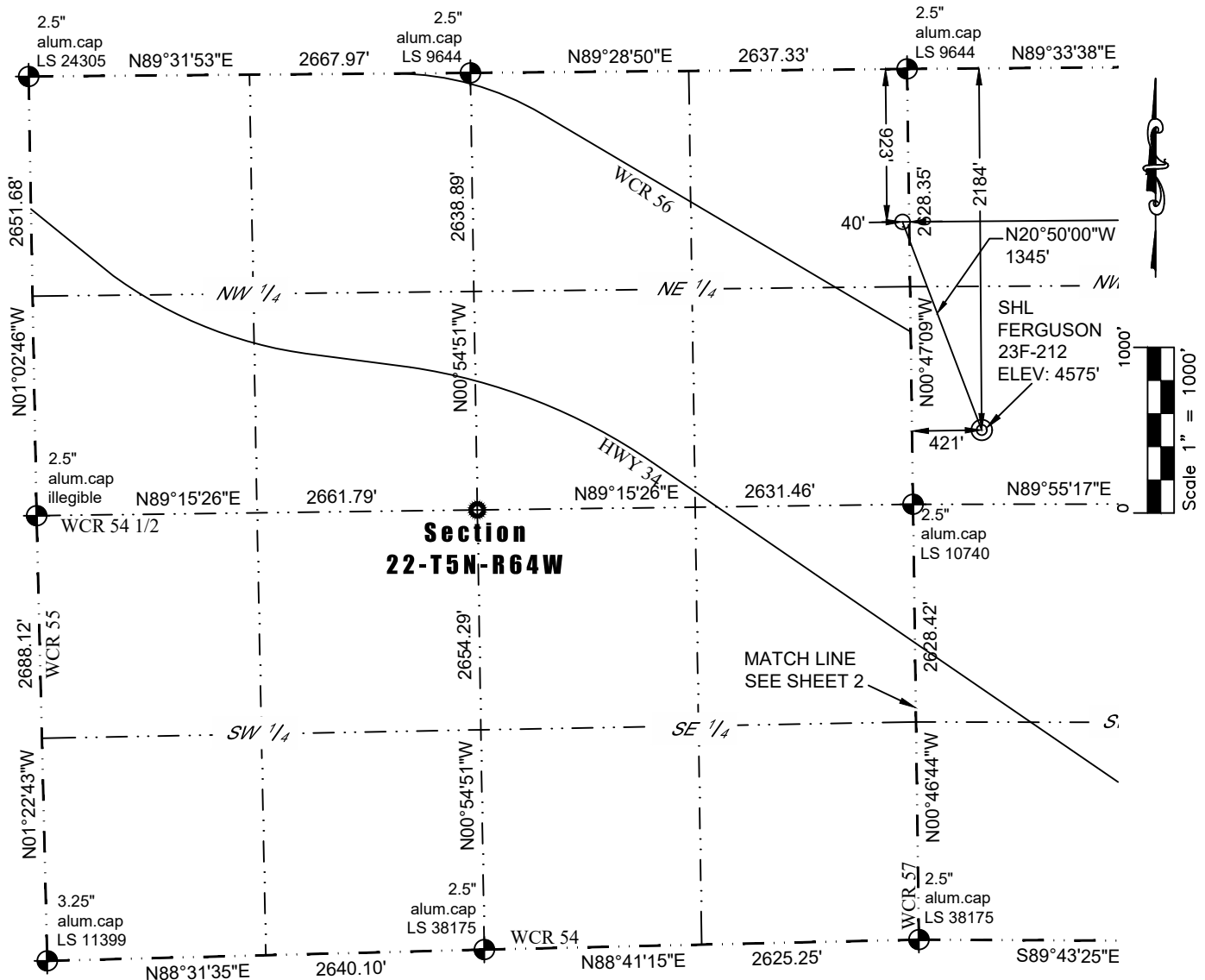


# WELL LOCATION CERTIFICATE

*THIS MAP DOES NOT REPRESENT A BOUNDARY SURVEY*



**Distance to nearest unit boundary: 914'**

In accordance with a request from Barney Hammond of PDC Energy, Inc., Washburn Land Surveying, LLC has determined the location of the **FERGUSON 23F-212** well site to be SHL: 2184' FNL and 421' FWL, (EPL: 923' FNL and 40' FEL, BHL: 923' FNL and 2240' FEL), as measured at ninety (90) degrees from the section lines of Sections 22, 23 and 24, Township 5 North, Range 64 West of the 6th Principal Meridian, Weld County Colorado.

Proposed Surface Hole Data:  
Latitude: N 40.3860749°  
Longitude: W 104.5248865°  
PDOP: 2.0

Proposed Entry Point Data:  
Latitude: N 40.3895393°  
Longitude: W 104.5265538°

Proposed Bottom Hole Data:  
Latitude: N 40.3894577°  
Longitude: W 104.4969605°

Nearest Cultural Items:  
Building: 877' NE  
Building Unit: 937' NE  
Above Ground Utility: 416' W  
Public Road: 715' NW

Property Line: 421' W  
Railroad: 760' S  
High Occupancy Building Unit: +5280  
Designated Outside Activity Area: +5280

**LEGEND**

- - Found Survey Monument
- - Calculated Location
- ⊙ - Surface Hole Location (SHL)
- - Entry Point Location (EPL)
- × - Bottom Hole Location (BHL)

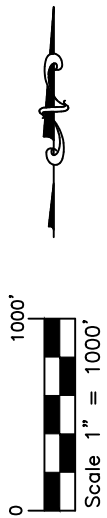
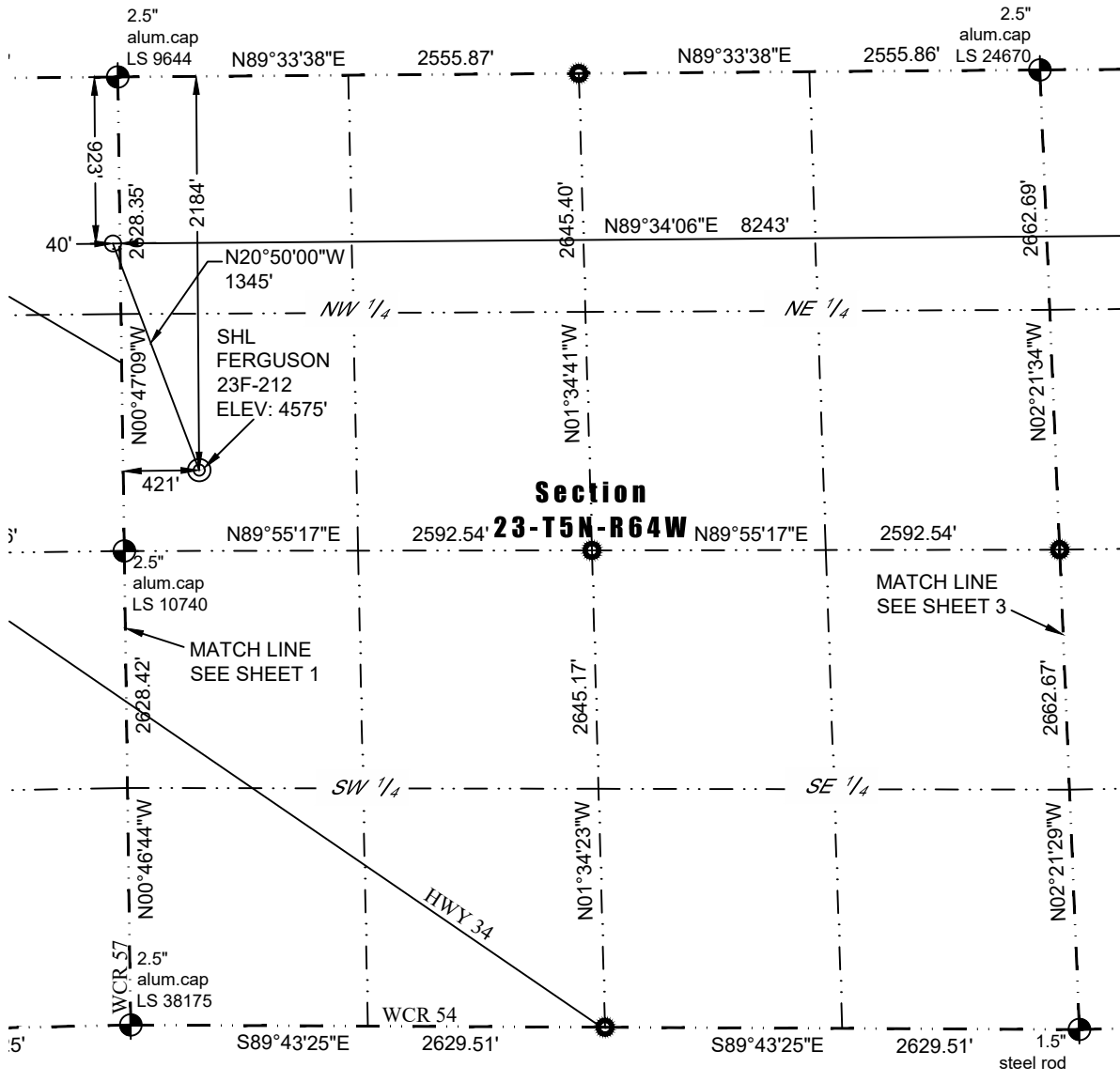
I hereby certify that this Well Location Certificate was prepared by me or under my direct supervision on 6/22/2017 for and on behalf of PDC Energy, Inc. That it is not a Land Survey Plat or an Improvement Survey Plat and that it is not to be relied upon for establishment of fences, buildings, or other future improvement lines.

**Notes:**

- 1) Bearings and distances based on NAD 83 Colorado North State Plane Coordinate, using RTK GPS observations taken 9/8/16 by operator Jason Dahlman.
- 2) Conversion factor to ground (1.0002577355).
- 3) Elevations based on NAVD 88 GPS heights and Geoid 2009 corrections.
- 4) See Location Drawing for visible improvements within 500 feet of Pad Site.
- 5) The surface use is a cultivated field.

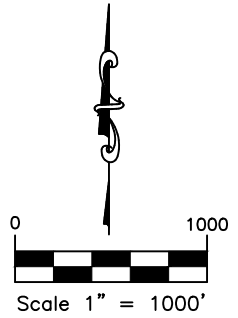
**NOTICE:** According to Colorado law you must commence any legal action based upon any defect in this W.L.C. within three years after you first discover such defect. In no event may any action based upon any defect in this W.L.C. be commenced more than ten years from this said date of the certification shown hereon.

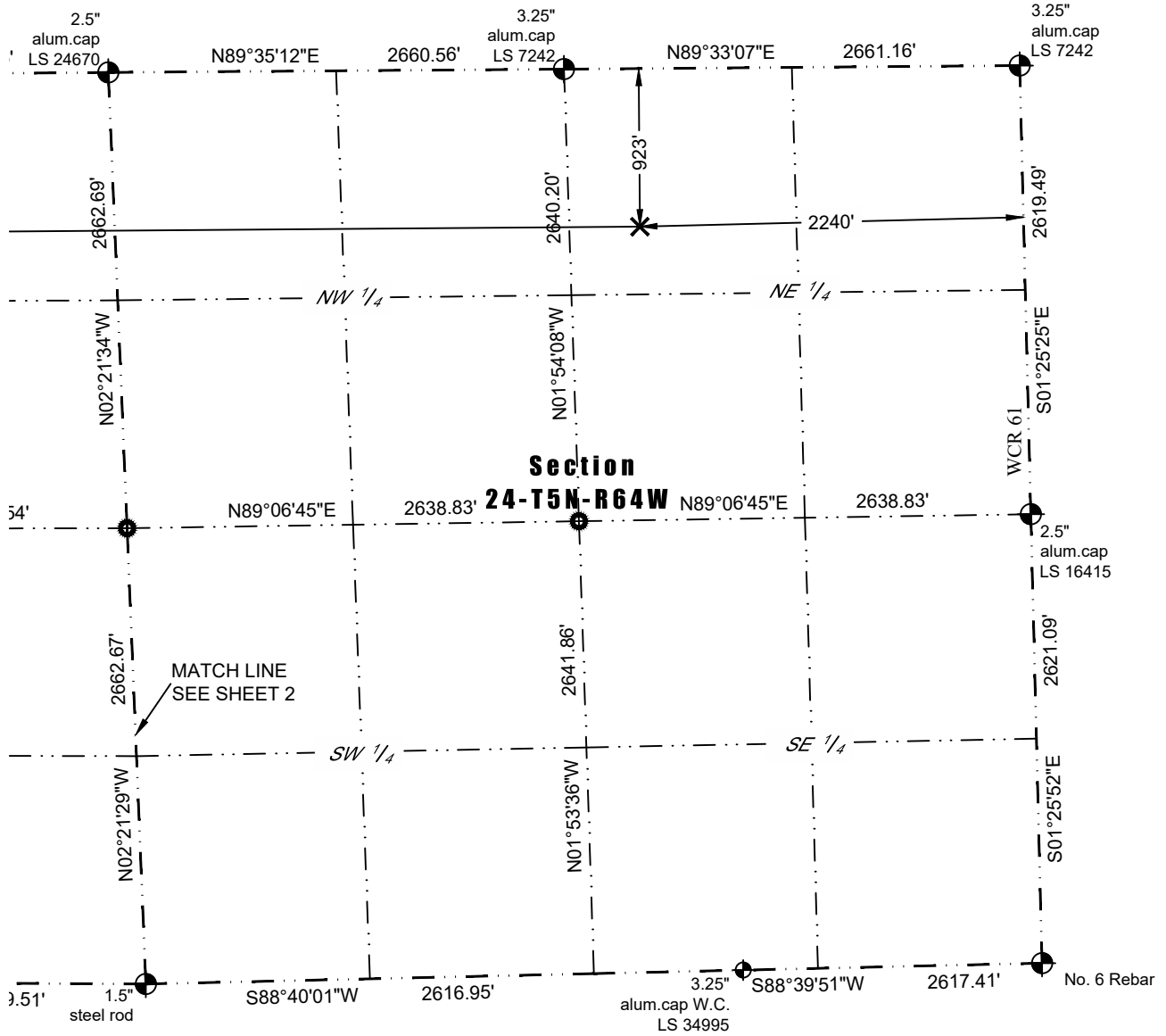
John Robert McGehee LS#38219  
 Well: FERGUSON 23F-212



**Section  
23-T5N-R64W**

- LEGEND**
- - Found Survey Monument
  - ⊙ - Calculated Location
  - ⊙ - Surface Hole Location (SHL)
  - - Entry Point Location (EPL)
  - ⊗ - Bottom Hole Location (BHL)





- LEGEND**
- ⊕ - Found Survey Monument
  - - Calculated Location
  - ⊙ - Surface Hole Location (SHL)
  - - Entry Point Location (EPL)
  - ✕ - Bottom Hole Location (BHL)

