



Anschutz Oil Company, LLC

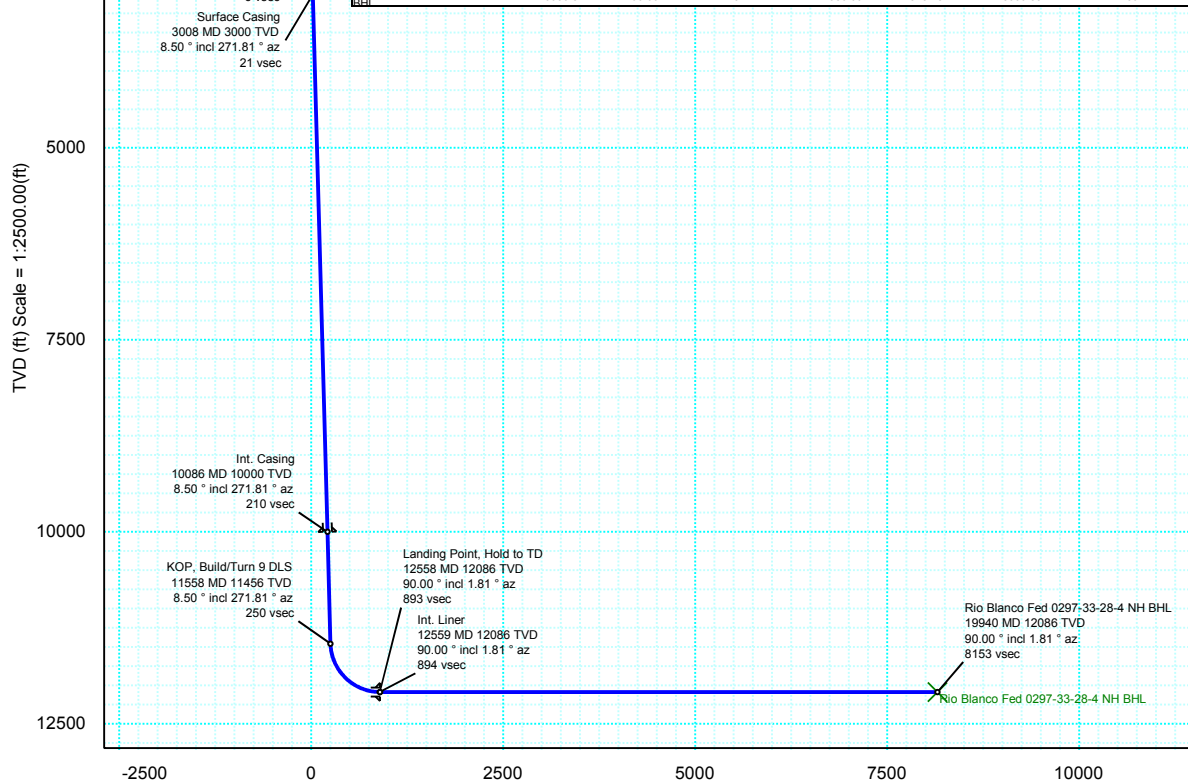
Schlumberger

Borehole:	Well:	Field:	Structure:
Original Hole	Rio Blanco Fed 0297-33-28-4 NH	CO, Rio Blanco County (NAD 83 NZ)	33-02N-97W (Rio Blanco Fed 0297-33-28 Pad)

Gravity & Magnetic Parameters					Surface Location					NAD83 Colorado State Plane, Northern Zone, US Feet					Miscellaneous				
Model:	HDGM 2016	Dip:	66.189°	Date:	13-Jan-2017	Lat:	N 40 5 47.27	Northings:	1290219.44ftUS	Grid Conv:	-1.7994°	Slot:	Slot B	TVD Ref:	KB 26.5ft(6195.4ft above MSL)				
MagDec:	9.688°	FS:	51754.117nT	Gravity FS:	998.872mgn (9.80665 Based)	Lon:	W 108 17 5.67	Easting:	2221029.68ftUS	Scale Fact:	0.99996045	Plan:	Rio Blanco Fed 0297-33-28-4 NH R0 mdv 13Jan17						

Surface Location									
Northing: 1290219.44080924		Easting: 2221029.67813224		Latitude: N 40 5 47.27		Longitude: W 108 17 5.67		VSec Azimuth: 351.38397 7829126	
Target Description			Grid Coord					Local Coord	
Target Name	Shape	Latitude	Longitude	Northing	Easting	TVD	VSec	N(+)/S(-)	E(+)/W(-)
Rio Blanco Fed 0297-33-28-3 NH Sec 33-28	Polyline	N 40 5 47.40	W 108 17 5.55	1290232.26	2221039.32	6195.40	11.23	12.82	9.64
660' Setback Rio Blanco Fed 0297-33-28-3 NH Sec 33-28	Polyline	N 40 5 47.40	W 108 17 5.55	1290232.26	2221039.32	6195.40	11.23	12.82	9.64
Rio Blanco Fed 0297-33-28-4 NH BHL	Point	N 40 7 6.51	W 108 17 24.64	1298279.94	2219808.34	12086.00	8152.84	8060.83	-1221.39

Critical Points									
Critical Point	MD	INCL	AZIM	TVD	VSEC	N(+)/S(-)	E(+)/W(-)	DLS	
Surface	0.00	0.00	0.00	0.00	0.00	0.00	0.00	0.00	
KOP, Build 2 DLS	2000.00	0.00	271.81	2000.00	0.00	0.00	0.00	0.00	
Hold	2424.75	8.50	271.81	2423.20	5.69	0.99	-31.41	2.00	
Surface Casing	3007.95	8.50	271.81	3000.00	21.27	3.71	-117.52	0.00	
Int. Casing	10085.60	8.50	271.81	10000.00	210.42	36.67	-1162.54	0.00	
KOP, Build/Turn 9 DLS	11558.13	8.50	271.81	11456.37	249.77	43.53	-1379.96	0.00	
Landing Point, Hold to TD	12558.12	90.00	1.81	12086.00	892.90	682.80	-1453.90	9.00	
Int. Liner	12559.00	90.00	1.81	12086.00	893.76	683.67	-1453.87	0.00	
Rio Blanco Fed 0297-33-28-4 NH BHL	19939.82	90.00	1.81	12086.00	8152.84	8060.83	-1221.39	0.00	



Vertical Section (ft) Azim = 351.384° Scale = 1:2500.00(ft) Origin = 0N/-S, 0E/-W

Rev0
Proposal



Grid North
Tot Corr (M->G 11.487")
Mag Dec (9.688")
Grid Conv (-1.799")

EW (ft) Scale = 1:2500.00(ft)

