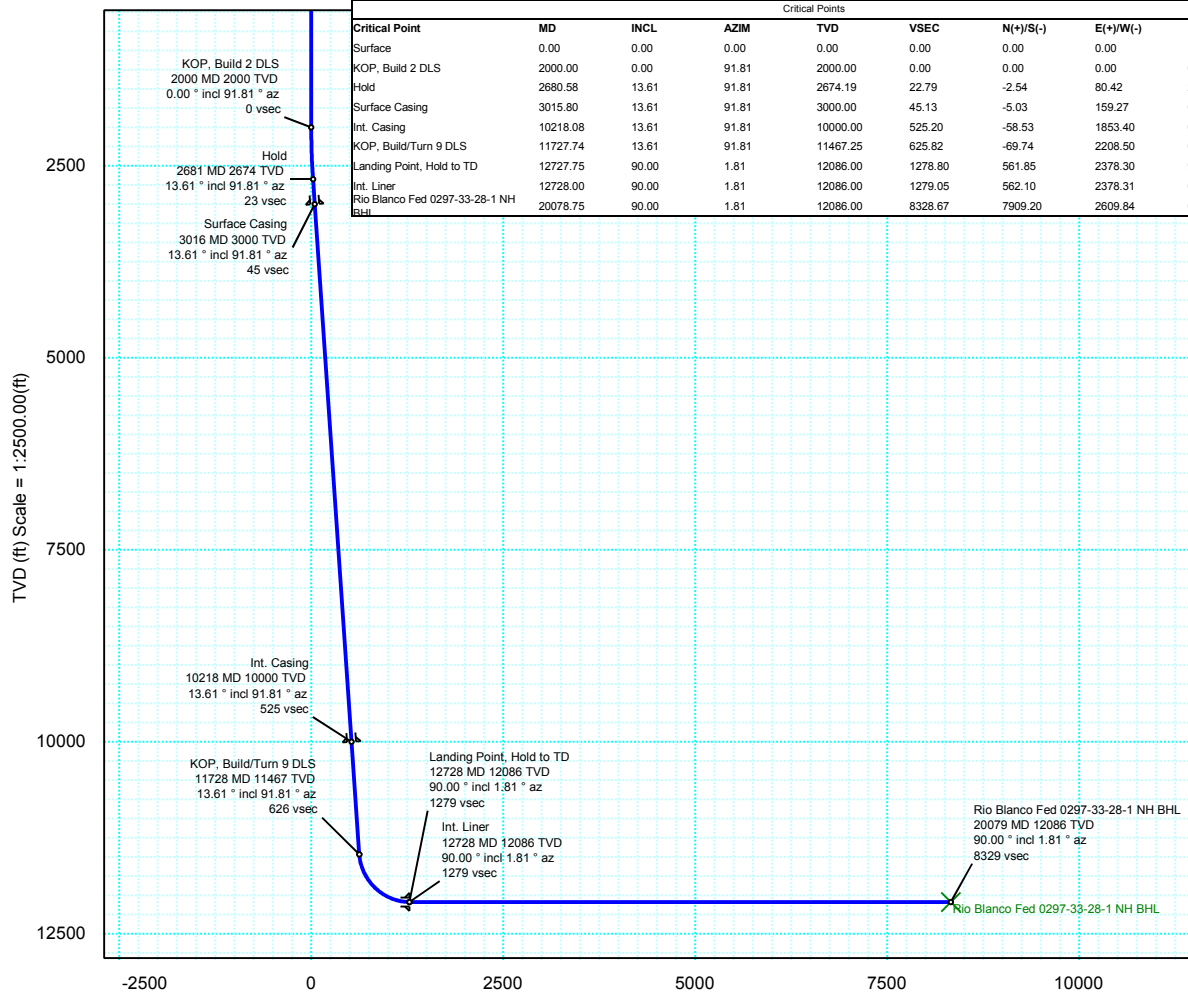


|                  |                                |                                   |  |
|------------------|--------------------------------|-----------------------------------|--|
| <b>Borehole:</b> | <b>Well:</b>                   | <b>Field:</b>                     | <b>Structure:</b>                          |
| Original Hole    | Rio Blanco Fed 0297-33-28-1 NH | CO, Rio Blanco County (NAD 83 NZ) | 33-02N-97W (Rio Blanco Fed 0297-33-28 Pad) |

|   |  |   |
|---|--|---|
| <b>Gravity &amp; Magnetic Parameters</b>                              | <b>Surface Location</b>  | <b>Miscellaneous</b>                                |
| Model: HDGM 2016 Dip: 66.189° Date: 13-Jan-2017                       | NAD83 Colorado State Plane, Northern Zone, US Feet               | Slot: Slot C TVD Ref: KB 26.5ft(6195.4ft above MSL) |
| MagDec: 9.688° FS: 51754.099nT Gravity FS: 998.872mgn (9.80665 Based) | Lat: N 40 5 47.41 Northing: 1290232.57RUS Grid Conv: -1.7993°    | Plan: Rio Blanco Fed 0297-33-28-1 NH R0 mdv 13Jan17 |
|   | Lon: W 108 17 5.23 Easting: 2221064.24RUS Scale Fact: 0.99996045 |   |

| Surface Location                         |  |                  |              |                |                  |            |          |              |            |          |               |               |  |                      |
|--|--|------------------|--------------|----------------|------------------|------------|----------|--------------|------------|----------|---------------|---------------|--|----------------------|
| Northing:                                |  | 1290232.56894432 | Easting:     |                | 2221064.23777988 | Latitude:  |          | N 40 5 47.41 | Longitude: |          | W 108 17 5.23 | VSec Azimuth: |  | 18.261604<br>0284987 |
| Target Description                       |  |                  | Grid Coord   |                |                  |            |          |              |            |          | Local Coord   |               |  |                      |
| Target Name                              |  | Shape            | Latitude     | Longitude      | Northing         | Easting    | TVD      | VSec         | N(+)S(-)   | E(+)W(-) |               |               |  |                      |
| Rio Blanco Fed 0297-33-28-3 NH Sec 33-28 |  | Polyline         | N 40 5 47.40 | W 108 17 5.55  | 1290232.26       | 2221039.32 | 6195.40  | -8.10        | -0.31      | -24.92   |               |               |  |                      |
| 660' Setback                             |  | Polyline         | N 40 5 47.40 | W 108 17 5.55  | 1290232.26       | 2221039.32 | 6195.40  | -8.10        | -0.31      | -24.92   |               |               |  |                      |
| Rio Blanco Fed 0297-33-28-1 NH BHL       |  | Point            | N 40 7 6.34  | W 108 16 34.85 | 1298141.44       | 2223673.97 | 12086.00 | 8328.67      | 7909.20    | 2609.84  |               |               |  |                      |

| Critical Points                    |          |       |       |          |         |          |          |      |
|------------------------------------|----------|-------|-------|----------|---------|----------|----------|------|
| Critical Point                     | MD       | INCL  | AZIM  | TVD      | VSEC    | N(+)S(-) | E(+)W(-) | DLS  |
| Surface                            | 0.00     | 0.00  | 0.00  | 0.00     | 0.00    | 0.00     | 0.00     | 0.00 |
| KOP, Build 2 DLS                   | 2000.00  | 0.00  | 91.81 | 2000.00  | 0.00    | 0.00     | 0.00     | 0.00 |
| Hold                               | 2680.58  | 13.61 | 91.81 | 2674.19  | 22.79   | -2.54    | 80.42    | 2.00 |
| Surface Casing                     | 3015.80  | 13.61 | 91.81 | 3000.00  | 45.13   | -5.03    | 159.27   | 0.00 |
| Int. Casing                        | 10218.08 | 13.61 | 91.81 | 10000.00 | 525.20  | -58.53   | 1853.40  | 0.00 |
| KOP, Build/Turn 9 DLS              | 11727.74 | 13.61 | 91.81 | 11467.25 | 625.82  | -69.74   | 2208.50  | 0.00 |
| Landing Point, Hold to TD          | 12727.75 | 90.00 | 1.81  | 12086.00 | 1278.80 | 561.85   | 2378.30  | 9.00 |
| Int. Liner                         | 12728.00 | 90.00 | 1.81  | 12086.00 | 1279.05 | 562.10   | 2378.31  | 0.00 |
| Rio Blanco Fed 0297-33-28-1 NH BHL | 20078.75 | 90.00 | 1.81  | 12086.00 | 8328.67 | 7909.20  | 2609.84  | 0.00 |



Vertical Section (ft) Azim = 18.262° Scale = 1:2500.00(ft) Origin = 0N/-S, 0E/-W

Rev0

Proposal

