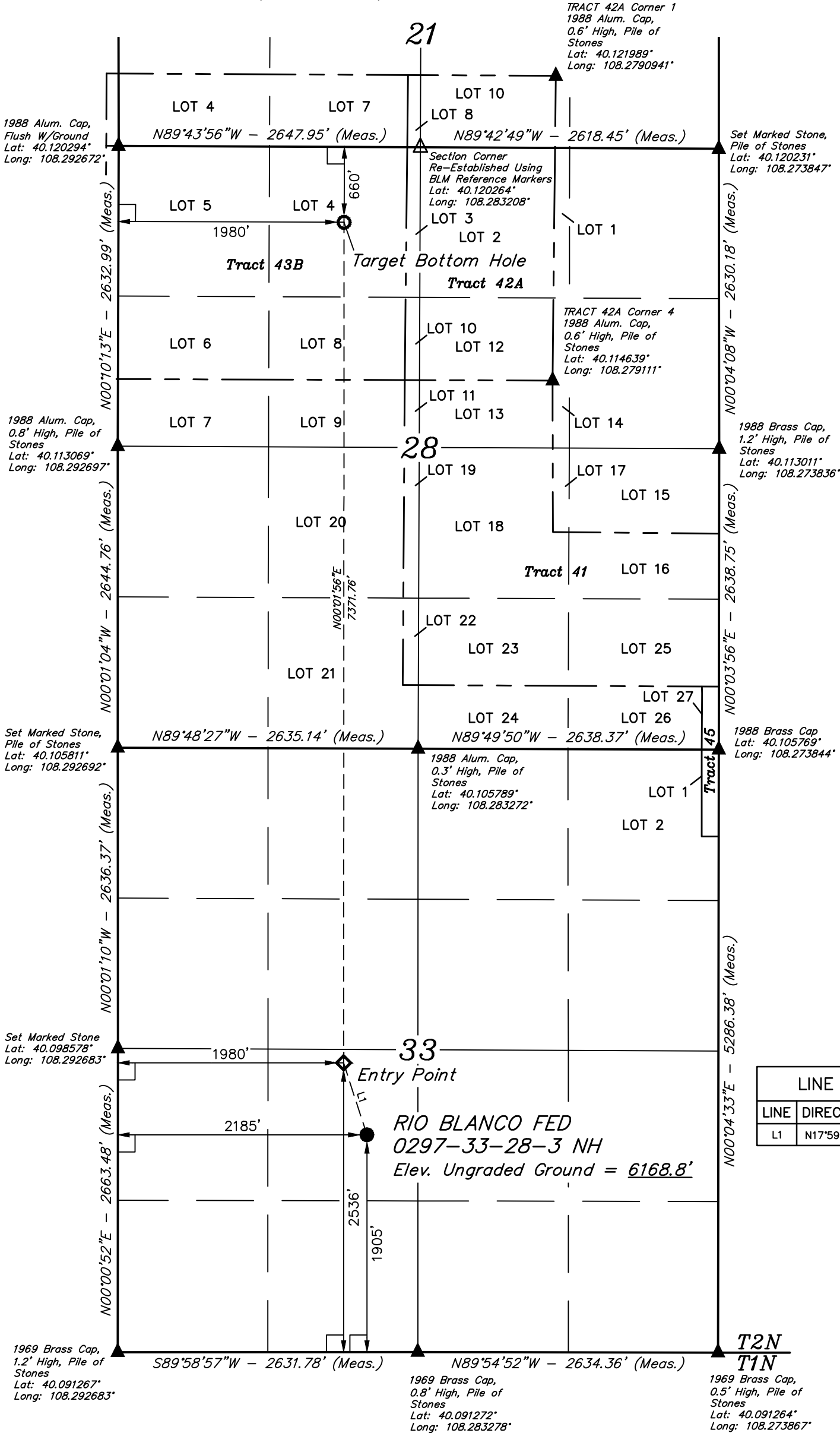


LEGEND:

- = 90° SYMBOL
- = PROPOSED WELLHEAD.
- = ENTRY POINT
- = TARGET BOTTOM HOLE.
- = SECTION CORNERS LOCATED. (NAD 83)
- = SECTION CORNERS RE-ESTABLISHED. (Not Set on Ground.) (NAD 83)

T2N, R97W, 6th P.M.



LINE TABLE		
LINE	DIRECTION	LENGTH
L1	N17°59'19"W	663.11'

PDOP = 5.1



NAD 83 (SURFACE LOCATION)	NAD 83 (ENTRY POINT)	NAD 83 (TARGET BOTTOM HOLE)
LATITUDE = 40°05'47.40" (40.096500)	LATITUDE = 40°05'53.63" (40.098231)	LATITUDE = 40°07'06.46" (40.118461)
LONGITUDE = 108°17'05.55" (108.284875)	LONGITUDE = 108°17'08.19" (108.285608)	LONGITUDE = 108°17'08.17" (108.285603)
NAD 27 (SURFACE LOCATION)	NAD 27 (ENTRY POINT)	NAD 27 (TARGET BOTTOM HOLE)
LATITUDE = 40°05'47.51" (40.096531)	LATITUDE = 40°05'53.74" (40.098261)	LATITUDE = 40°07'06.56" (40.118489)
LONGITUDE = 108°17'03.24" (108.284233)	LONGITUDE = 108°17'05.87" (108.284964)	LONGITUDE = 108°17'05.85" (108.284958)
STATE PLANE NAD 83 (CO. NORTH)	STATE PLANE NAD 83 (CO. NORTH)	STATE PLANE NAD 83 (CO. NORTH)
N: 1290232.29 E: 2221038.99	N: 1290868.85 E: 2220853.98	N: 1298234.55 E: 2221087.32
STATE PLANE NAD 27 (CO. NORTH)	STATE PLANE NAD 27 (CO. NORTH)	STATE PLANE NAD 27 (CO. NORTH)
N: 290232.54 E: 1221198.87	N: 290869.08 E: 1221013.86	N: 298234.71 E: 1221247.20

CERTIFICATE OF SURVEY
THIS IS TO CERTIFY THAT THE ABOVE PLAT WAS PREPARED FROM FIELD NOTES OF ACTUAL SURVEYS MADE BY ME OR UNDER MY SUPERVISION AND THAT THE SAME ARE TRUE AND CORRECT TO THE BEST OF MY KNOWLEDGE AND BELIEF.
REGISTERED LAND SURVEYOR
REGISTRATION NO. 38130
STATE OF COLORADO 2015-17

REV: 2 02-15-17 M.D. (ADD ENTRY POINT)

BASIS OF BEARINGS
BASIS OF BEARINGS IS A G.P.S. OBSERVATION

BASIS OF ELEVATION

SPOT ELEVATION AT A BRIDGE LOCATED IN THE SE 1/4 OF SECTION 34, T2N, R97W, 6th P.M. TAKEN FROM THE BARCUS CREEK SE, QUADRANGLE, COLORADO, RIO BLANCO COUNTY, 7.5 MINUTE QUAD. (TOPOGRAPHIC MAP) PUBLISHED BY THE UNITED STATES DEPARTMENT OF THE INTERIOR, GEOLOGICAL SURVEY. SAID ELEVATION IS MARKED AS BEING 5700 FEET.



UELS, LLC
Corporate Office * 85 South 200 East
Vernal, UT 84078 * (435) 789-1017



ANSCHUTZ OIL COMPANY, LLC

RIO BLANCO FED 0297-33-28-3 NH
NE 1/4 SW 1/4, SECTION 33, T2N, R97W, 6th P.M.
RIO BLANCO COUNTY, COLORADO

SURVEYED BY	JOHN FLOYD., J.S.	11-01-16	SCALE
DRAWN BY	T.B.	09-21-16	1" = 1000'

WELL LOCATION PLAT