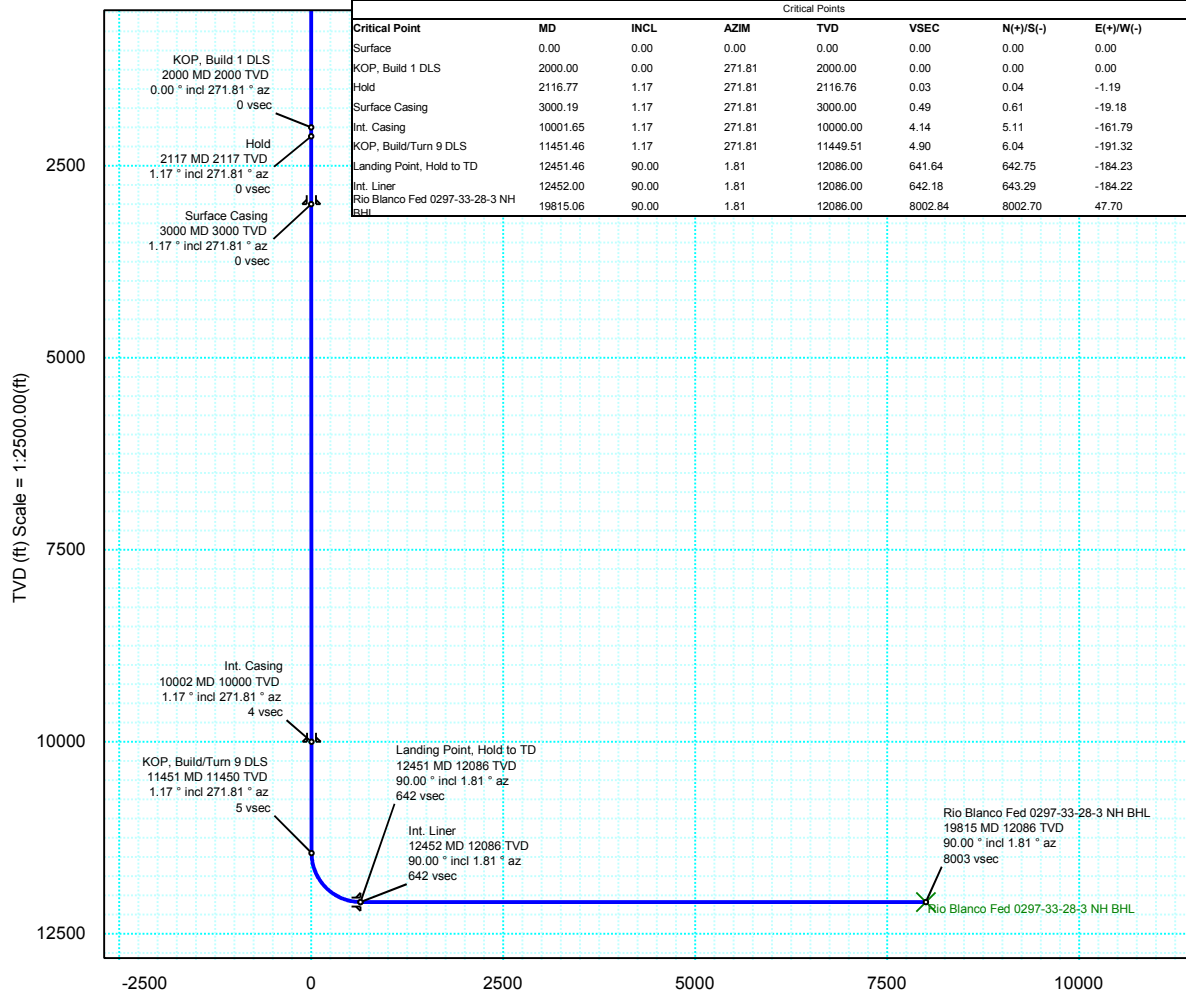


|                  |                                |                                   |  |
|------------------|--------------------------------|-----------------------------------|--|
| <b>Borehole:</b> | <b>Well:</b>                   | <b>Field:</b>                     | <b>Structure:</b>                          |
| Original Hole    | Rio Blanco Fed 0297-33-28-3 NH | CO, Rio Blanco County (NAD 83 NZ) | 33-02N-97W (Rio Blanco Fed 0297-33-28 Pad) |

|   |   |   |
|---|---|---|
| <b>Gravity &amp; Magnetic Parameters</b>                              | <b>Surface Location</b>   | <b>Miscellaneous</b>                                |
| Model: HDGM 2016 Dip: 66.189° Date: 13-Jan-2017                       | NAD83 Colorado State Plane, Northern Zone, US Feet  | Slot: Slot A TVD Ref: KB 26.5ft(6195.4ft above MSL) |
| MagDec: 9.688° FS: 51754.108nT Gravity FS: 998.872mgn (9.80665 Based) | Lat: N 40 5 47.40 Northing: 1290232.26RUS Grid Conv: -1.7994°<br>Lon: W 108 17 5.55 Easting: 2221039.32RUS Scale Fact: 0.99996045 | Plan: Rio Blanco Fed 0297-33-28-3 NH R1 mdy 13Jan17 |

| Surface Location                         |                  |              |                  |            |              |            |               |               |                       |
|--|------------------|--------------|------------------|------------|--------------|------------|---------------|---------------|-----------------------|
| Northing:                                | 1290232.25845434 | Easting:     | 2221039.31735491 | Latitude:  | N 40 5 47.40 | Longitude: | W 108 17 5.55 | VSec Azimuth: | 0.3415404<br>90665411 |
| Target Description                       | Grid Coord       |              |                  |            | Local Coord  |            |               |               |                       |
| Target Name                              | Shape            | Latitude     | Longitude        | Northing   | Easting      | TVD        | VSec          | N(+)/S(-)     | E(+)/W(-)             |
| Rio Blanco Fed 0297-33-28-3 NH Sec 33-28 | Polyline         | N 40 5 47.40 | W 108 17 5.55    | 1290232.26 | 2221039.32   | 6195.40    | 0.00          | 0.00          | 0.00                  |
| 660' Setback                             | Polyline         | N 40 5 47.40 | W 108 17 5.55    | 1290232.26 | 2221039.32   | 6195.40    | 0.00          | 0.00          | 0.00                  |
| Rio Blanco Fed 0297-33-28-3 NH BHL       | Point            | N 40 7 6.46  | W 108 17 8.17    | 1298234.62 | 2221087.02   | 12086.00   | 8002.84       | 8002.70       | 47.70                 |

| Critical Points                    |          |       |        |          |         |           |           |      |  |
|------------------------------------|----------|-------|--------|----------|---------|-----------|-----------|------|--|
| Critical Point                     | MD       | INCL  | AZIM   | TVD      | VSEC    | N(+)/S(-) | E(+)/W(-) | DLS  |  |
| Surface                            | 0.00     | 0.00  | 0.00   | 0.00     | 0.00    | 0.00      | 0.00      | 0.00 |  |
| KOP, Build 1 DLS                   | 2000.00  | 0.00  | 271.81 | 2000.00  | 0.00    | 0.00      | 0.00      | 0.00 |  |
| Hold                               | 2116.77  | 1.17  | 271.81 | 2116.76  | 0.03    | 0.04      | -1.19     | 1.00 |  |
| Surface Casing                     | 3000.19  | 1.17  | 271.81 | 3000.00  | 0.49    | 0.61      | -19.18    | 0.00 |  |
| Int. Casing                        | 10001.65 | 1.17  | 271.81 | 10000.00 | 4.14    | 5.11      | -161.79   | 0.00 |  |
| KOP, Build/Turn 9 DLS              | 11451.46 | 1.17  | 271.81 | 11449.51 | 4.90    | 6.04      | -191.32   | 0.00 |  |
| Landing Point, Hold to TD          | 12451.46 | 90.00 | 1.81   | 12086.00 | 641.64  | 642.75    | -184.23   | 9.00 |  |
| Int. Liner                         | 12452.00 | 90.00 | 1.81   | 12086.00 | 642.18  | 643.29    | -184.22   | 0.00 |  |
| Rio Blanco Fed 0297-33-28-3 NH BHL | 19815.06 | 90.00 | 1.81   | 12086.00 | 8002.84 | 8002.70   | 47.70     | 0.00 |  |



Rev1

Proposal



Grid North  
Tot Corr (M->G 11.487°)  
Mag Dec (9.688°)  
Grid Conv (-1.799°)

EW (ft) Scale = 1:2500.00(ft)

