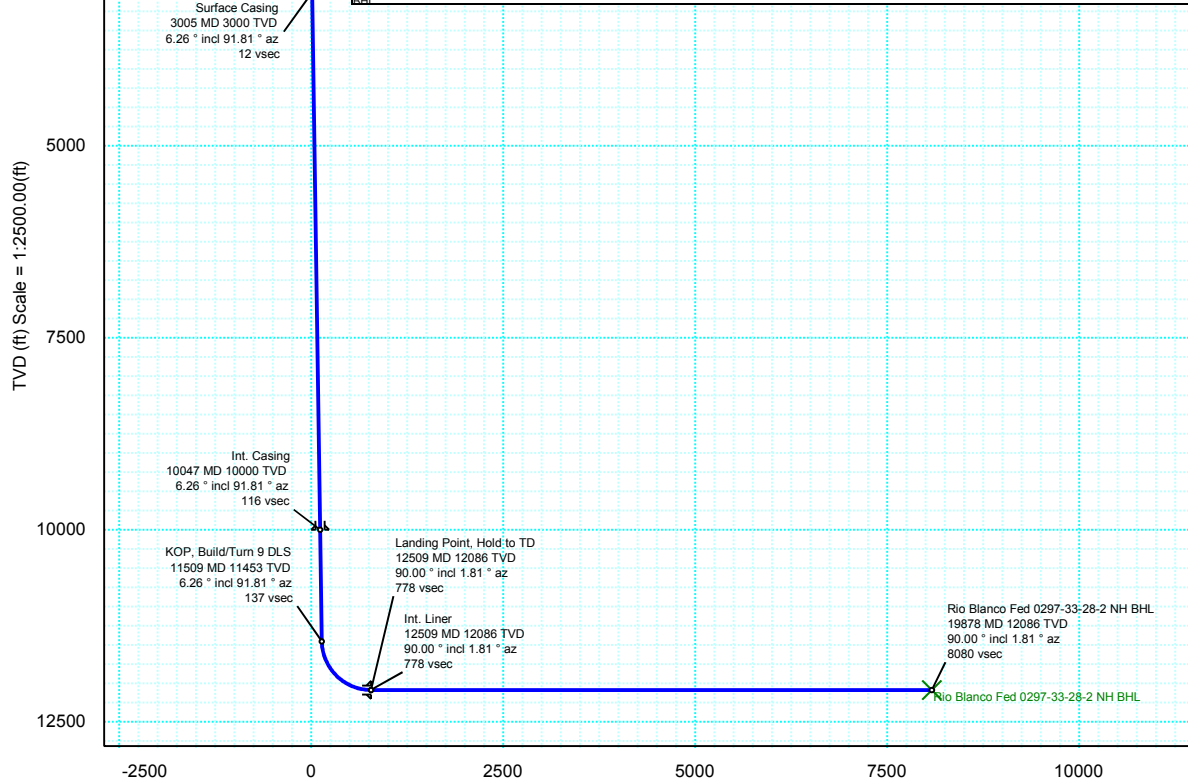


Borehole:	Well:	Field:	Structure:
Original Hole	Rio Blanco Fed 0297-33-28-2 NH	CO, Rio Blanco County (NAD 83 NZ)	33-02N-97W (Rio Blanco Fed 0297-33-28 Pad)

Gravity & Magnetic Parameters	Surface Location	Miscellaneous
Model: HDGM 2016 Dip: 66.189° Date: 13-Jan-2017	NAD83 Colorado State Plane, Northern Zone, US Feet	Slot: Slot D TVD Ref: KB 26.5ft(6195.4ft above MSL)
MagDec: 9.688° FS: 51754.107nT Gravity FS: 998.872mgn (9.80665 Based)	Lat: N 40 5 47.28 Northing: 1290219.75ftUS Grid Conv: -1.7994°	Plan: Rio Blanco Fed 0297-33-28-2 NH R0 mdv 13Jan17
	Lon: W 108 17 5.35 Easting: 2221054.6ftUS Scale Fact: 0.99996045	

Surface Location									
Northing:	1290219.75128953	Easting:	2221054.59857048	Latitude:	N 40 5 47.28	Longitude:	W 108 17 5.35	VSec Azimuth:	9.5516491 6750694
Target Description	Grid Coord				Local Coord				
Target Name	Shape	Latitude	Longitude	Northing	Easting	TVD	VSec	N(+)/S(-)	E(+)/W(-)
Rio Blanco Fed 0297-33-28-3 NH Sec 33-28	Polyline	N 40 5 47.40	W 108 17 5.55	1290232.26	2221039.32	6195.40	9.80	12.51	-15.28
660' Setback Rio Blanco Fed 0297-33-28-3 NH Sec 33-28	Polyline	N 40 5 47.40	W 108 17 5.55	1290232.26	2221039.32	6195.40	9.80	12.51	-15.28
Rio Blanco Fed 0297-33-28-2 NH BHL	Point	N 40 7 6.40	W 108 16 51.32	1298187.35	2222395.30	12086.00	8079.95	7967.93	1340.76

Critical Points									
Critical Point	MD	INCL	AZIM	TVD	VSEC	N(+)/S(-)	E(+)/W(-)	DLS	
Surface	0.00	0.00	0.00	0.00	0.00	0.00	0.00	0.00	
KOP, Build 2 DLS	2000.00	0.00	91.81	2000.00	0.00	0.00	0.00	0.00	
Hold	2312.98	6.26	91.81	2312.36	2.30	-0.54	17.07	2.00	
Surface Casing	3004.75	6.26	91.81	3000.00	12.47	-2.91	92.46	0.00	
Int. Casing	10046.73	6.26	91.81	10000.00	115.95	-27.11	859.89	0.00	
KOP, Build/Turn 9 DLS	11508.62	6.26	91.81	11453.17	137.44	-32.13	1019.20	0.00	
Landing Point, Hold to TD	12509.00	90.00	1.81	12086.00	777.60	601.99	1108.63	9.00	
Int. Liner	12509.00	90.00	1.81	12086.00	777.98	602.37	1108.64	0.00	
Rio Blanco Fed 0297-33-28-2 NH BHL	19878.22	90.00	1.81	12086.00	8079.95	7967.93	1340.76	0.00	



Rev0

Proposal

EW (ft) Scale = 1:2500.00(ft)



Grid North
Tot Corr (M->G 11.487")
Mag Dec (9.688")
Grid Conv (-1.799")

