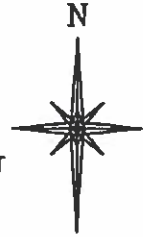


R. 92 W.

LEGEND

- ◆ WELL LOCATION
- APPROX. BHL/TOG
- L DENOTES 90° TIE
- FOUND MONUMENT



GRID NORTH
SCALE' 1" = 1000'
500' 0 1000'

T. 9 S.

SHL

LATITUDE (NAD 83)
NORTH 39.266769 DEG.
LONGITUDE (NAD 83)
WEST 107.707558 DEG.
NORTHING (NAD 83)
1529647.78
EASTING (NAD 83)
2375058.62

BHL/TOG

LATITUDE (NAD 83)
NORTH 39.274233 DEG.
LONGITUDE (NAD 83)
WEST 107.709265 DEG.
NORTHING (NAD 83)
1532377
EASTING (NAD 83)
2374642

BASIS OF BEARING/DATUM

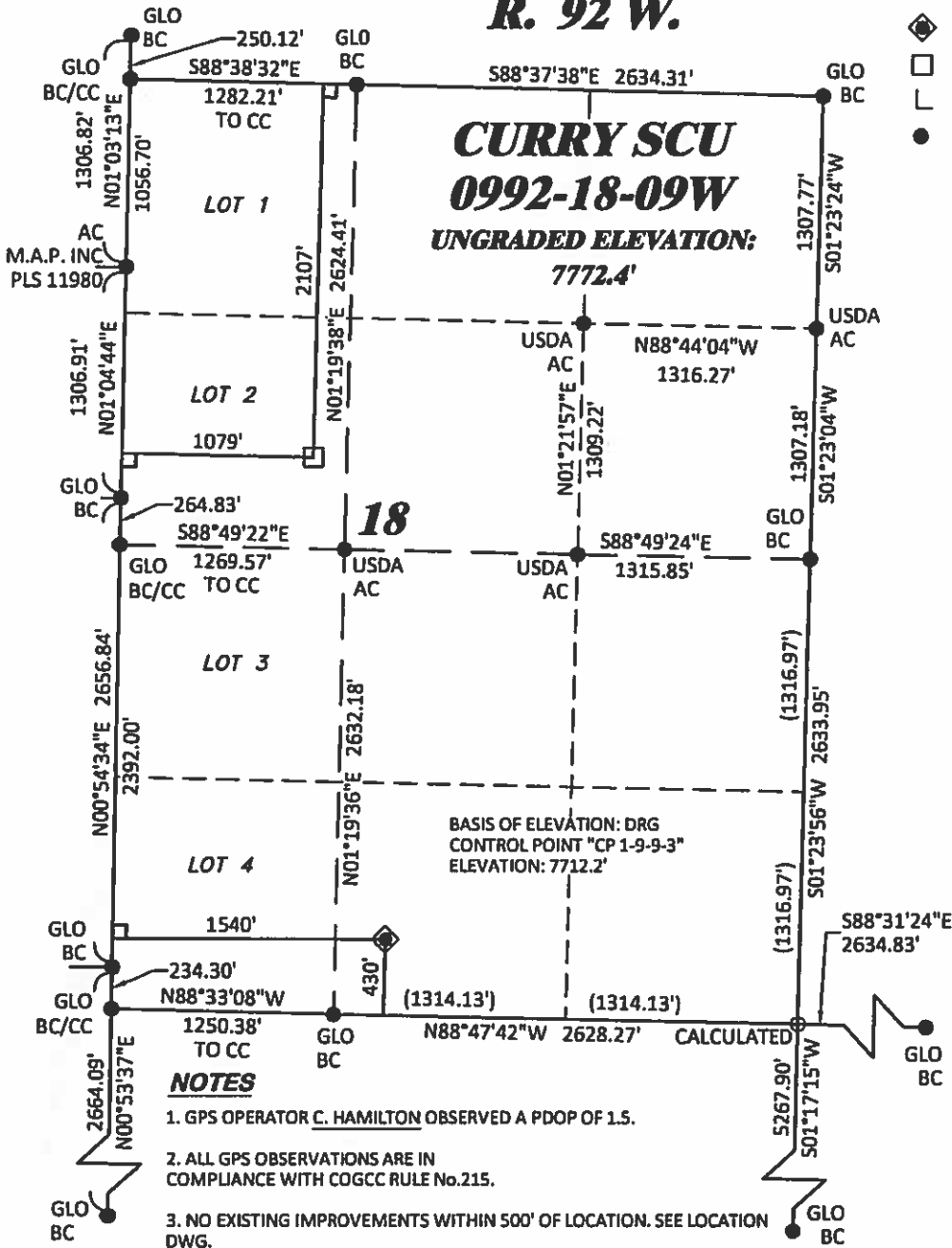
SPCS CO CENTRAL NAD 27 BASED ON GPS OBSERVATIONS AND OPUS SOLUTION ON DRG CONTROL POINT "CP 1-9-93" HAVING A POSITION OF:
NAD83(2011)
LAT 39° 18' 06.56" NORTH
LONG 107° 43' 21.56" WEST
NAVD88 ELEVATION: 7712.24

THE EAST LINE OF THE SEX OF SECTION 13, T9S R93W, MONUMENTED BY GLO BC'S AND BEARING N 00°54'34" E.

CURRY SCU
0992-18-09W

UNGRADED ELEVATION:
7772.4'

BASIS OF ELEVATION: DRG CONTROL POINT "CP 1-9-93" ELEVATION: 7712.2'



NOTES

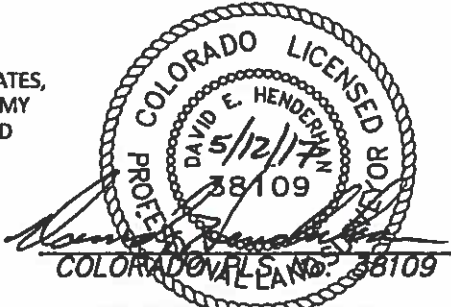
1. GPS OPERATOR C. HAMILTON OBSERVED A PDOP OF 1.5.
2. ALL GPS OBSERVATIONS ARE IN COMPLIANCE WITH COGCC RULE No.215.
3. NO EXISTING IMPROVEMENTS WITHIN 500' OF LOCATION. SEE LOCATION DWG.
4. SURROUNDING SURFACE USE IS NATIVE BRUSH, NON CROP RANGELAND.

SURVEYOR'S STATEMENT

I, DAVID E. HENDERHAN, AN EMPLOYEE AND AGENT ON BEHALF OF D.R. GRIFFIN & ASSOCIATES, INC. STATE THE PLAT HEREON IS A CORRECT REPRESENTATION OF A SURVEY MADE UNDER MY SUPERVISION ON THE 7th DAY OF MAY, 2017 OF THE SHOWN CURRY SCU 0992-18-09W AND THAT THE LOCATION HAS BEEN STAKED ON THE GROUND.

Notice: In accordance with Colorado State Law, any legal action based upon any defect in this survey plat must commence within three (3) years after first discovery of such defect. In no event, may any action based upon any defect in this survey plat be commenced more than ten (10) years from the date of certification shown hereon.

CURRY 0992-18-15 PAD



<p>DRG RIFFIN & ASSOCIATES, INC. 1414 ELK ST., ROCK SPRINGS, WY 82901 (307) 862-6028</p>	
DRAWN: 4/5/2017 - TCM	SCALE: 1" = 1000'
REVISED: 6/3/2017 - DEH	DRG JOB No. 21248
REVISED WELL NAME	01 PLAT 18-09W

PLAT OF DRILLING LOCATION IN SWSE, SECTION 18, FOR LARAMIE ENERGY, LLC
430' F/SL, & 1540' F/WL, SECTION 18, T. 9 S., R. 92 W., 6TH P.M., MESA COUNTY, COLORADO