

Form PS 1028



00211651

.. INC.

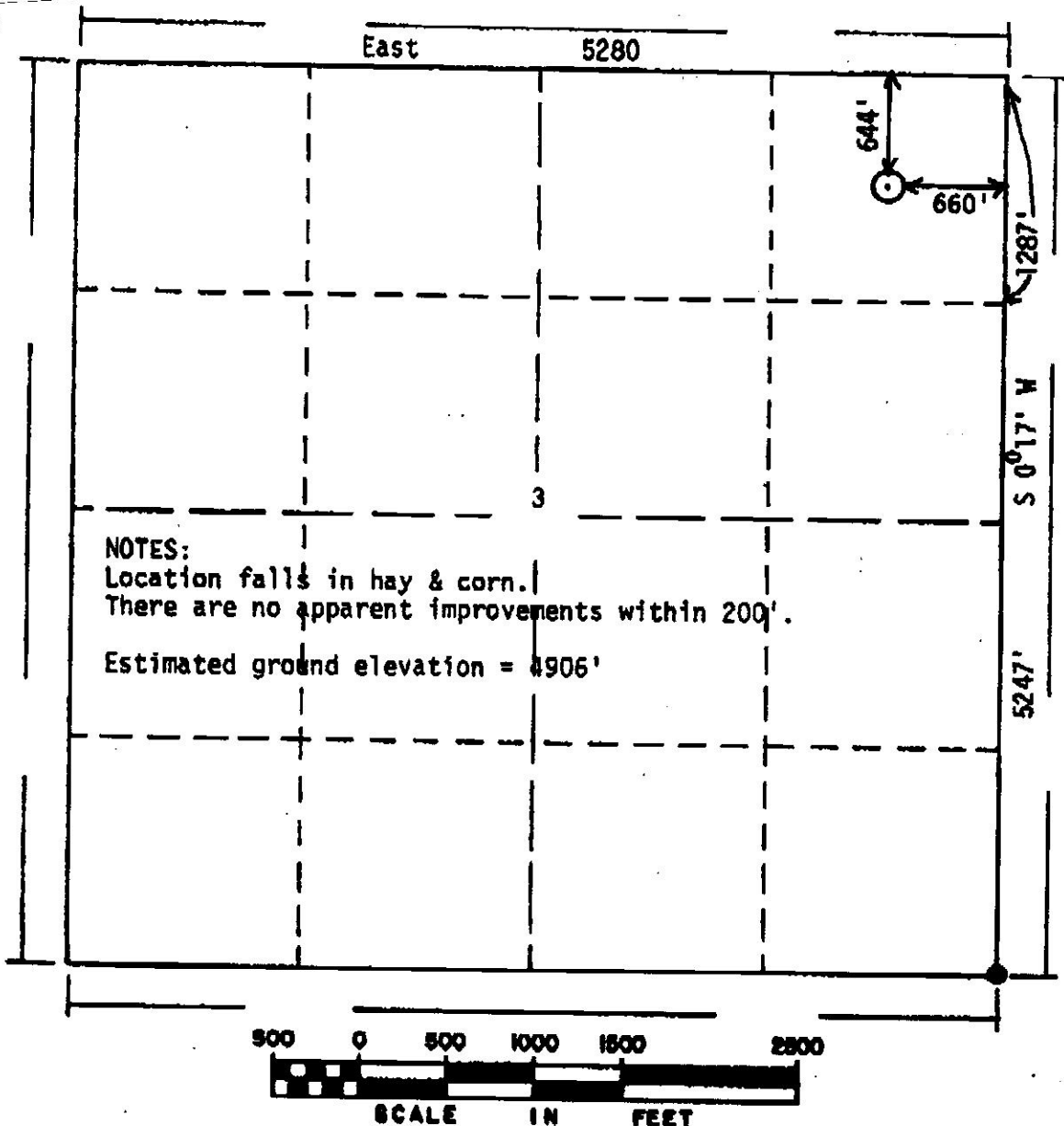
R. 66 W

ALL POWERS ELEVATION CO., INC.
elevations originate from
accepted U.S. benchmarks

(P)



BASIS of BEARING: East line of section assumed north-south.



N

T. 6 N

Powers Elevation Co., Inc. of Denver, Colorado has in accordance
with a request from Bob Hoinghaus for Snyder Oil Corp.

determined the location of 3-1G6 UPV

to be 644' FN & 660' FE

Range 66 West of the Sixth Principal

Weld County, Colorado

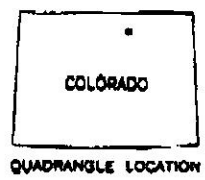
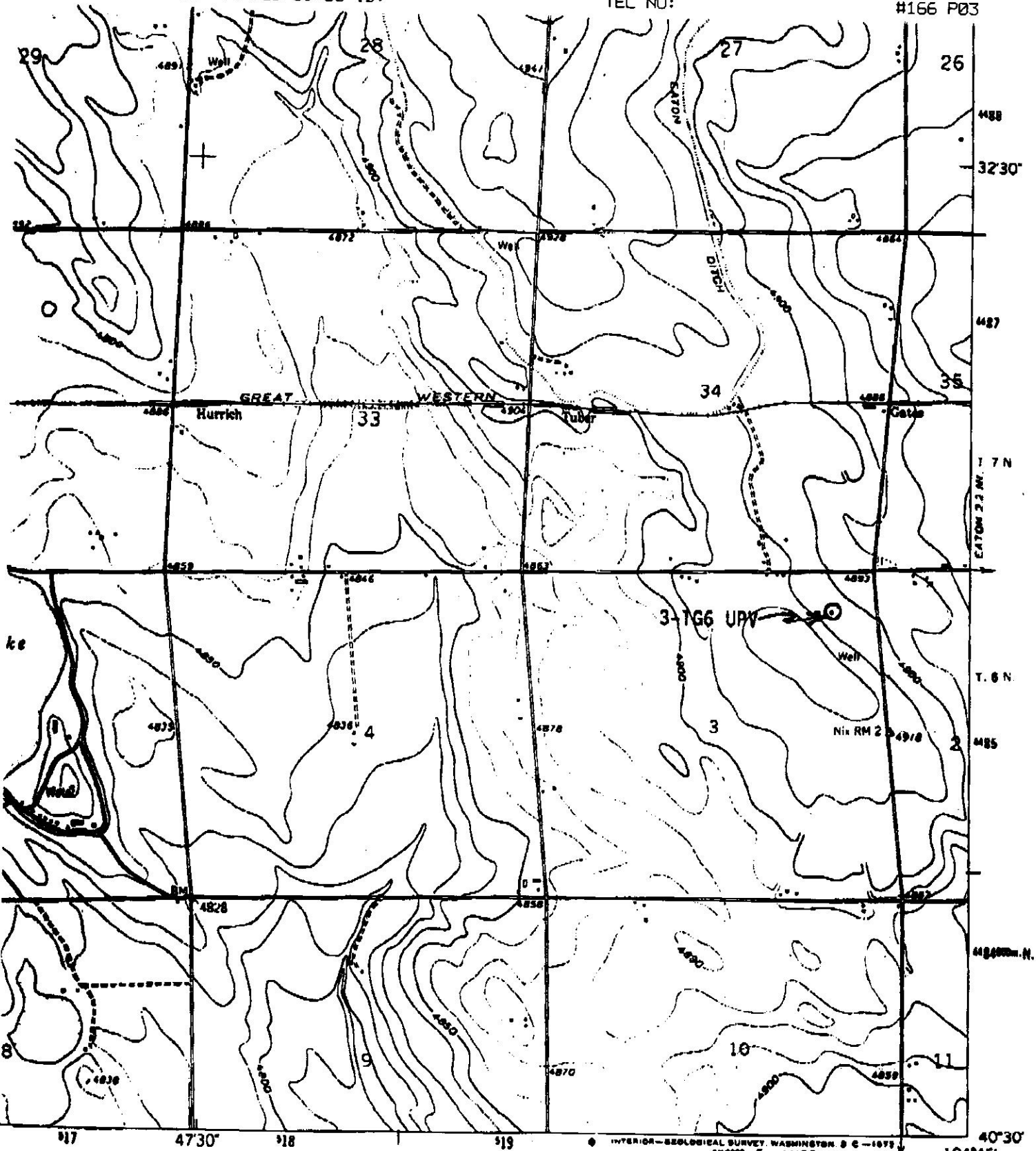
Section 3 , Township 6 North
Meridian,

I hereby state that this plat shows an approximation
of the proposed location and section lines as shown
from the Government Land Office records of the area.
This plat is for permitting purposes only and does not
necessarily show the true relationship of the
proposed location and the section lines.

Date: 8/9/94

Calvin Henry
Licensed Land Surveyor No.
State of Colorado





ROAD CLASSIFICATION
Medium-duty ——— Light-duty ———
Unimproved dirt - - - - -
State Route

SEVERANCE, COLO.
N4030 - W10445/7.5

GREELEY
304.1 NW