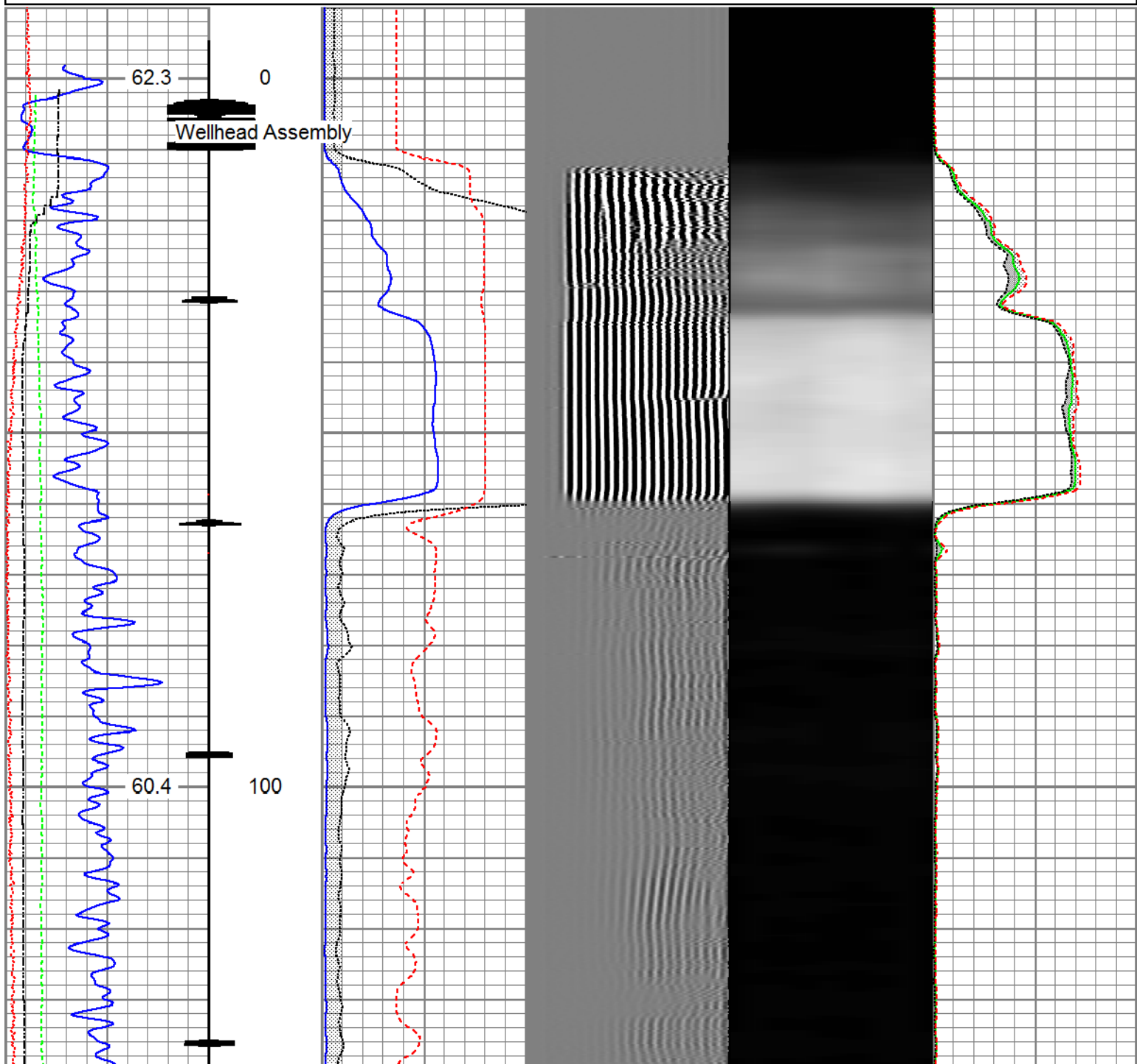
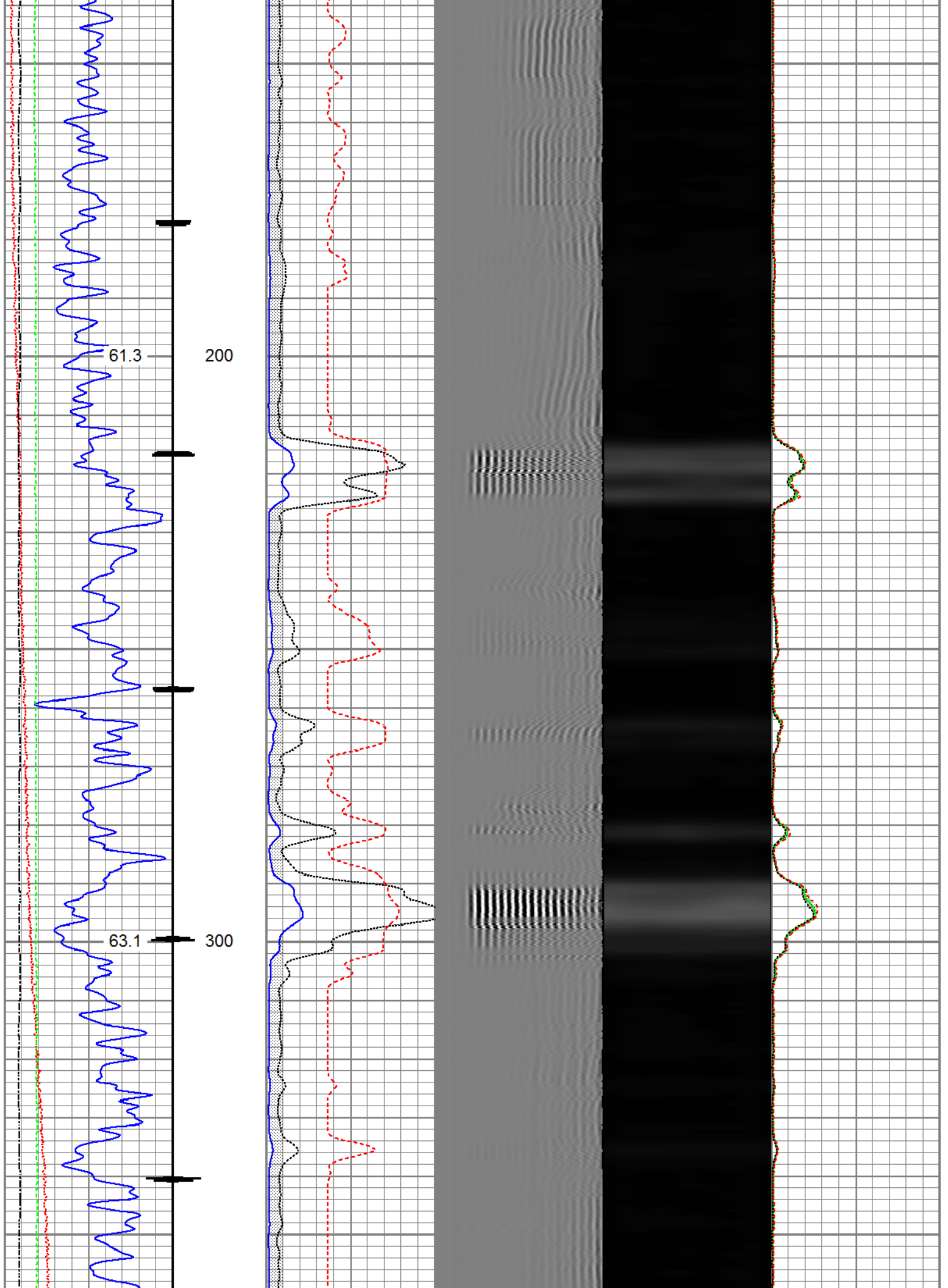


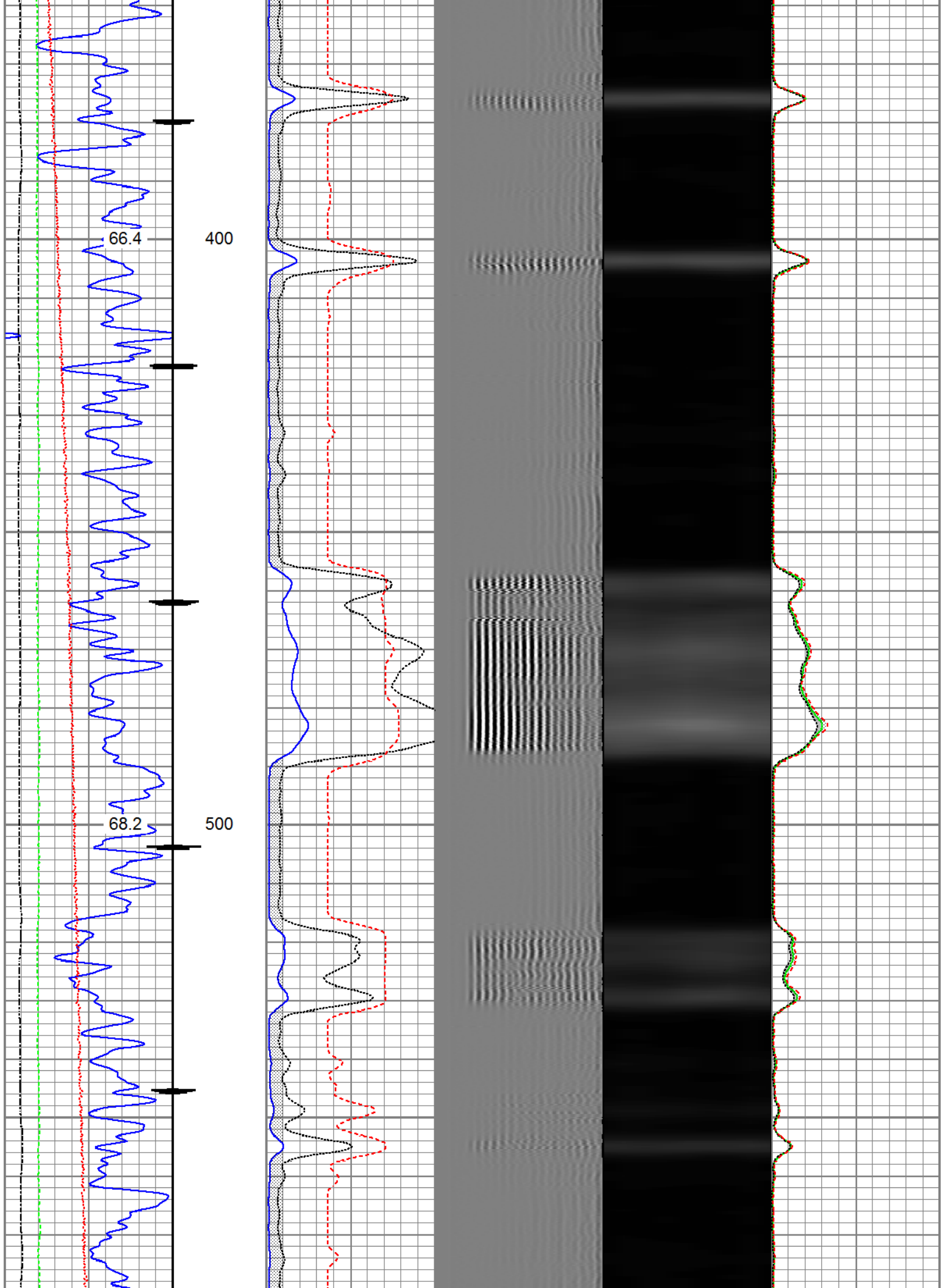


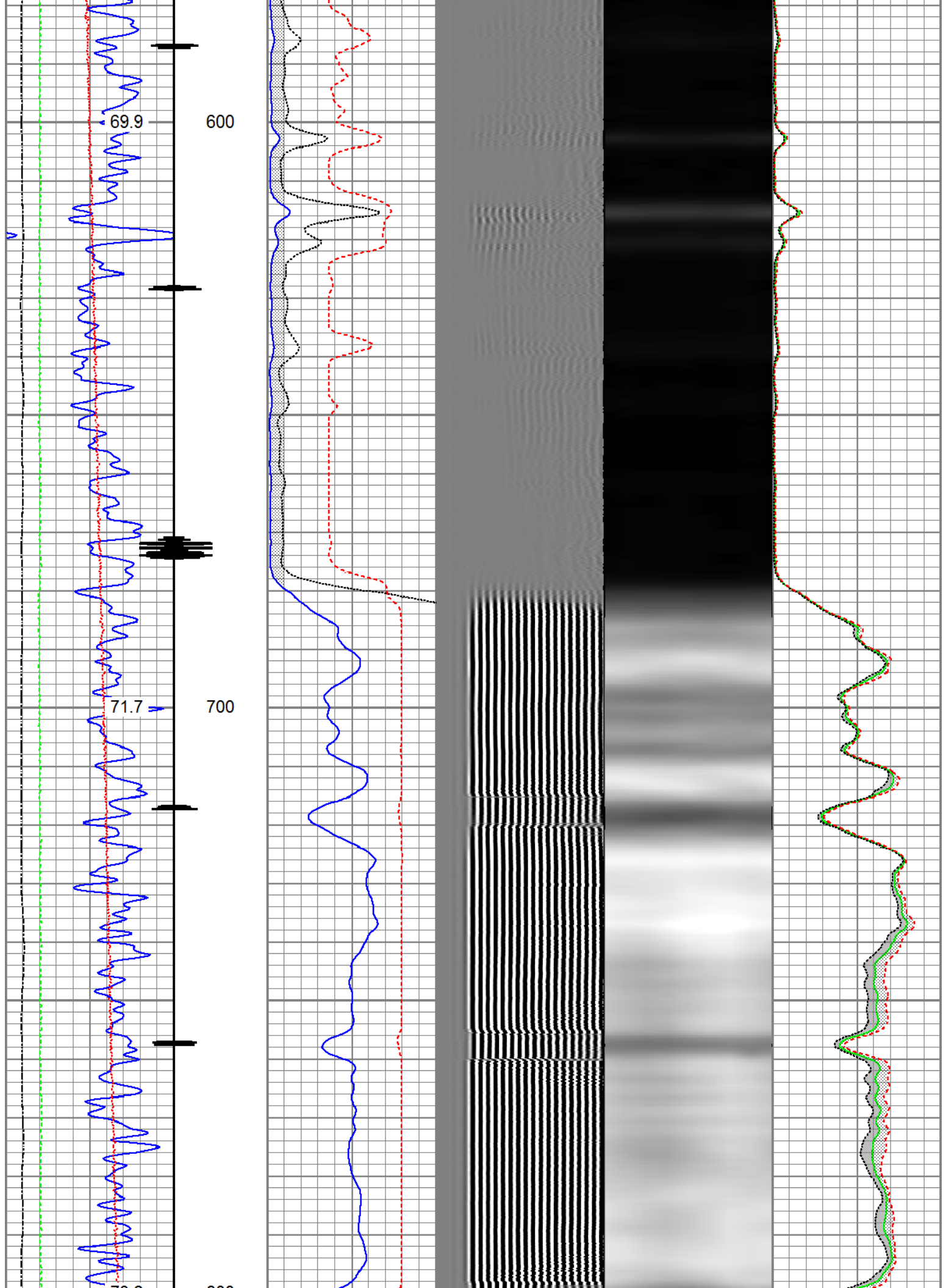
Database File 0512308002\_anadarko\_donald m vynickier unit 1\_rbl\_08-07-17\processed\_0512308002\_anadarko\_  
 Dataset Pathname pass5.2  
 Presentation Format ros\_radrii  
 Dataset Creation Mon Aug 07 10:24:40 2017  
 Charted by Depth in Feet scaled 1:240

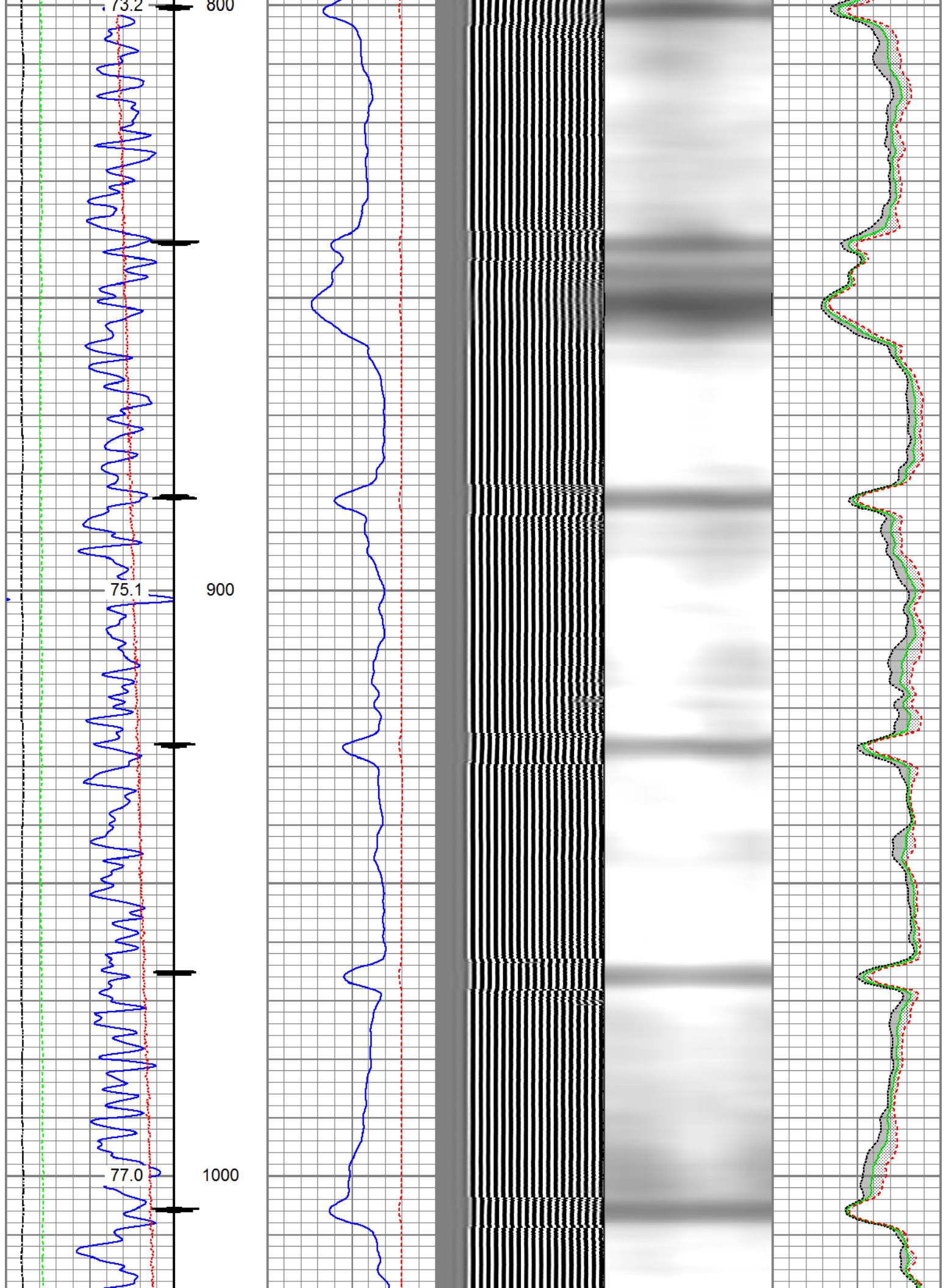
Gamma Ray 0 (GAPI) 120	3' Amplitude 0 (mV) 100	5' Variable Density Log 200 1200	Sector Map	Average Amplitude 0 100
Casing Collar Locator	3' Amplitude x 5 0 (mV) 20			Minimum Amplitude 0 100
Temperature 0 (degF) 20	3' Travel Time 650 (usec) 150			Maximum Amplitude 0 100
Line Speed -150 (ft/min) 150				
Line Tension 0 (lb) 2000				

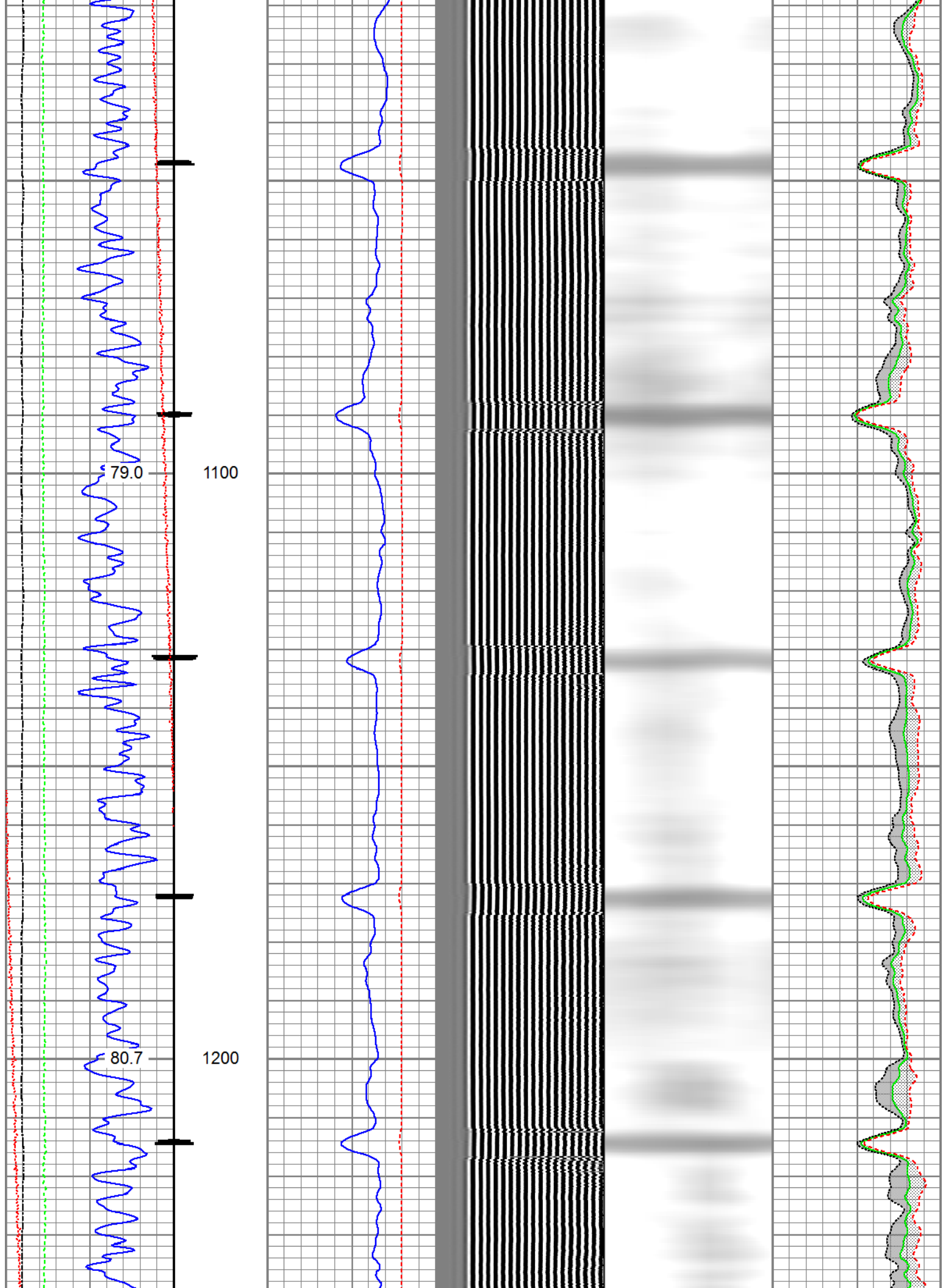


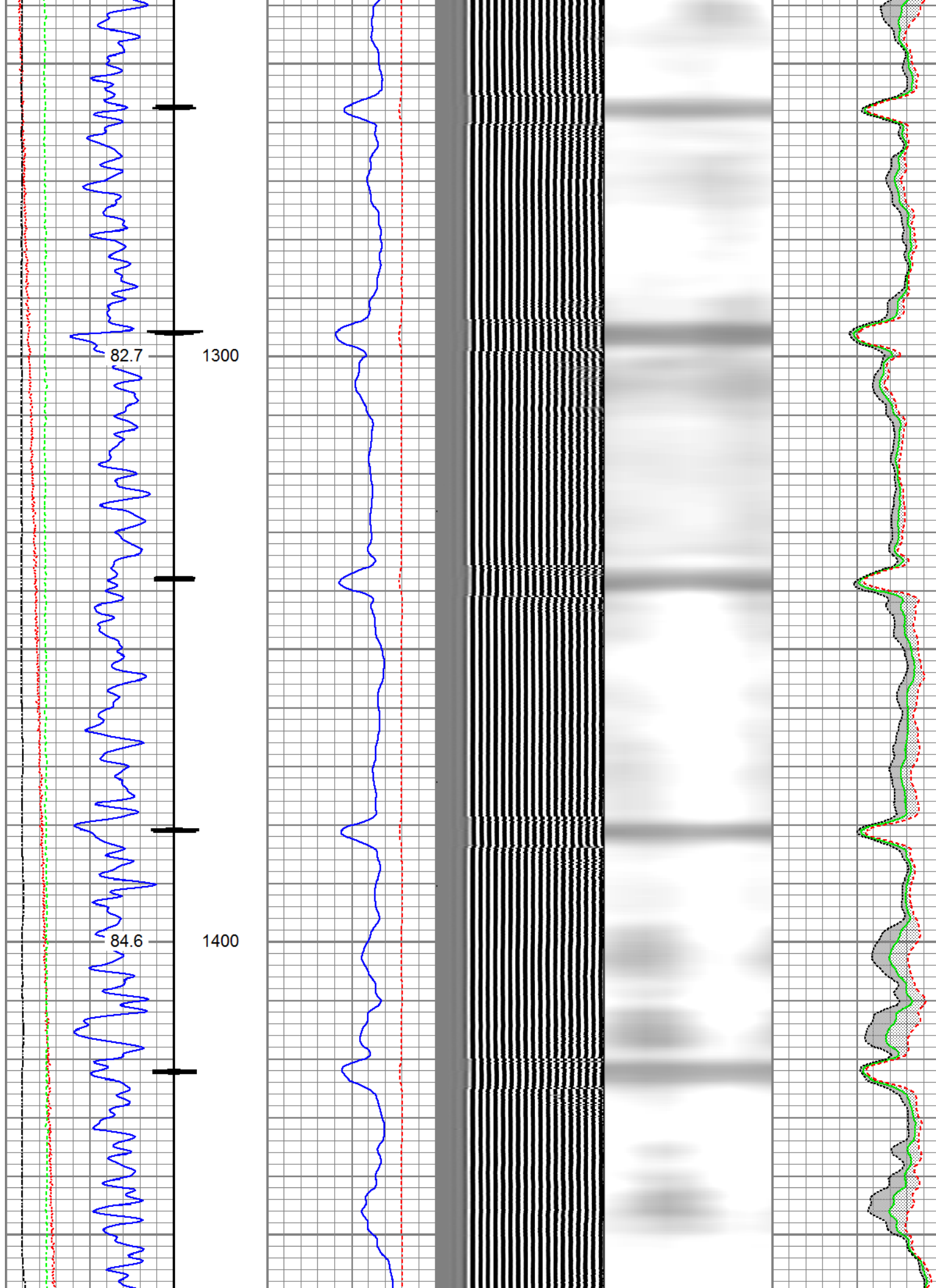


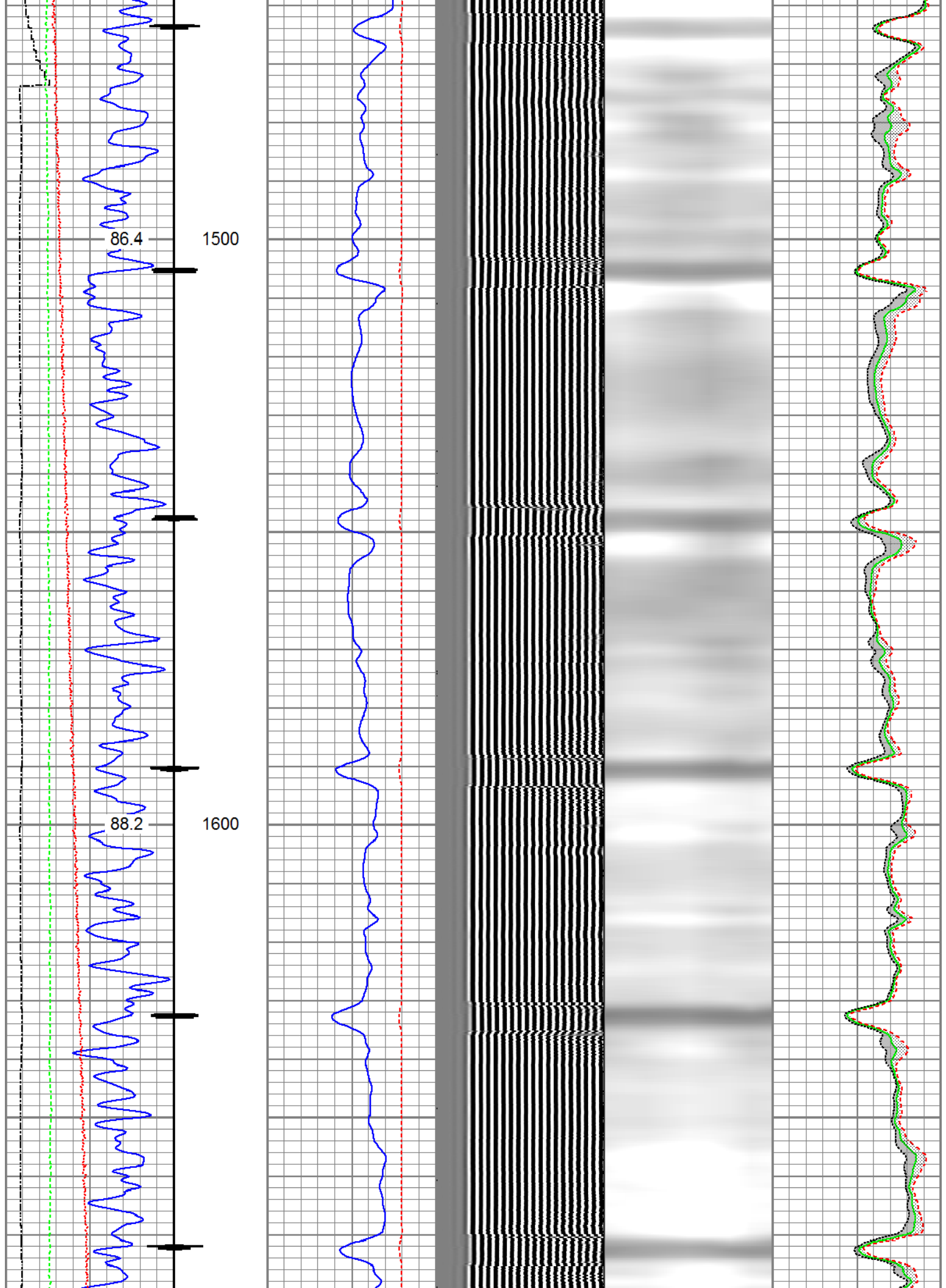


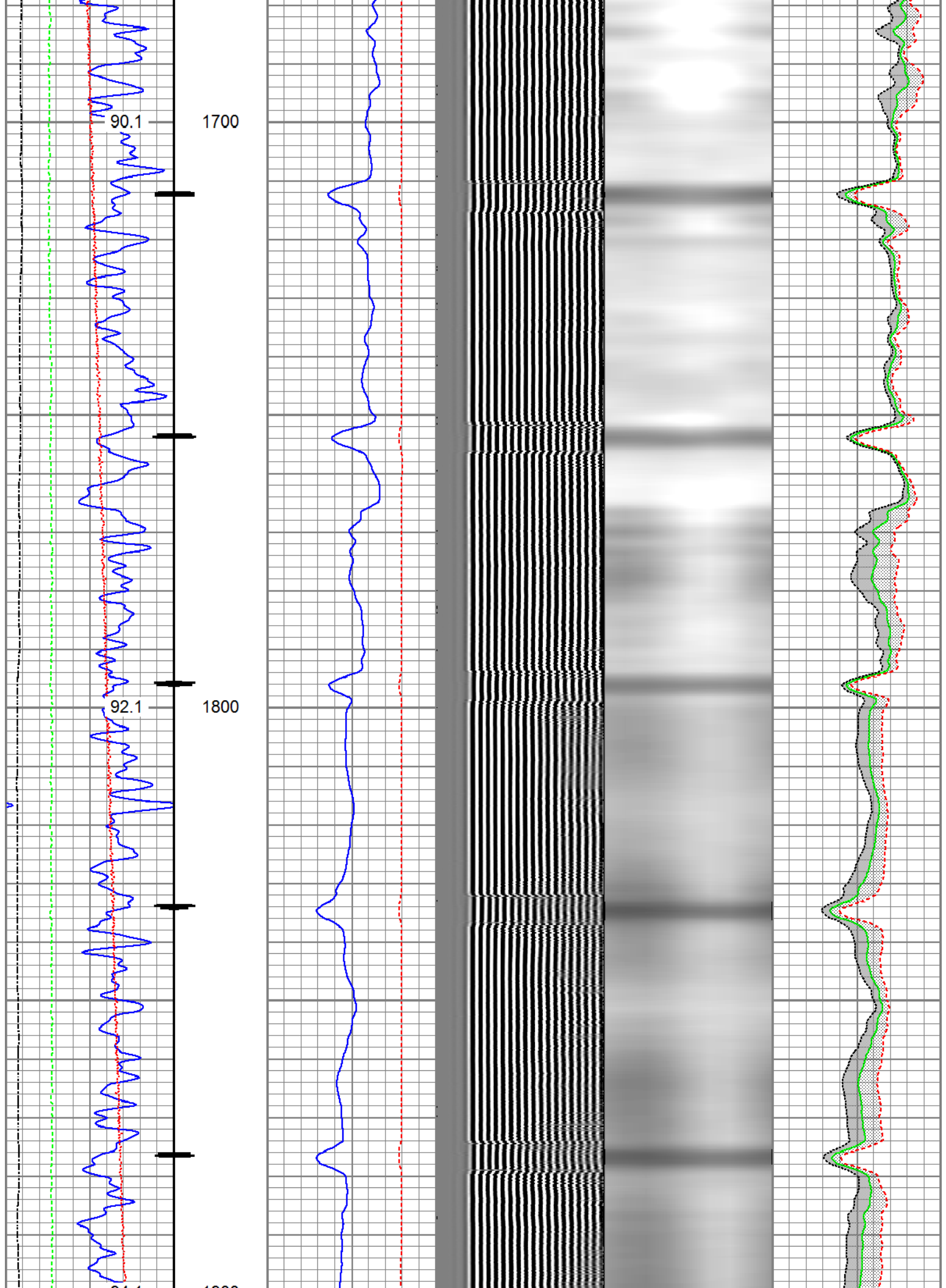


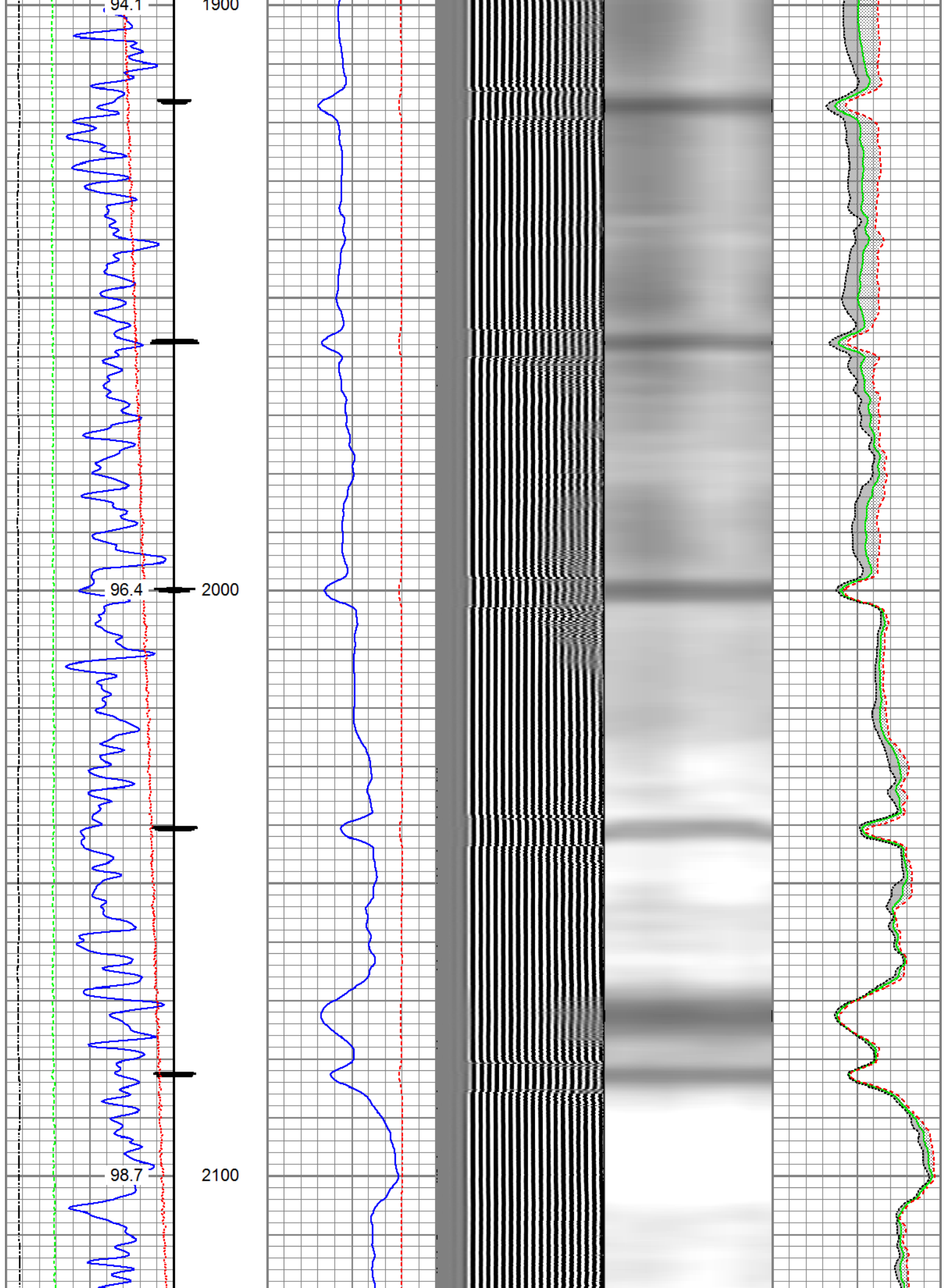


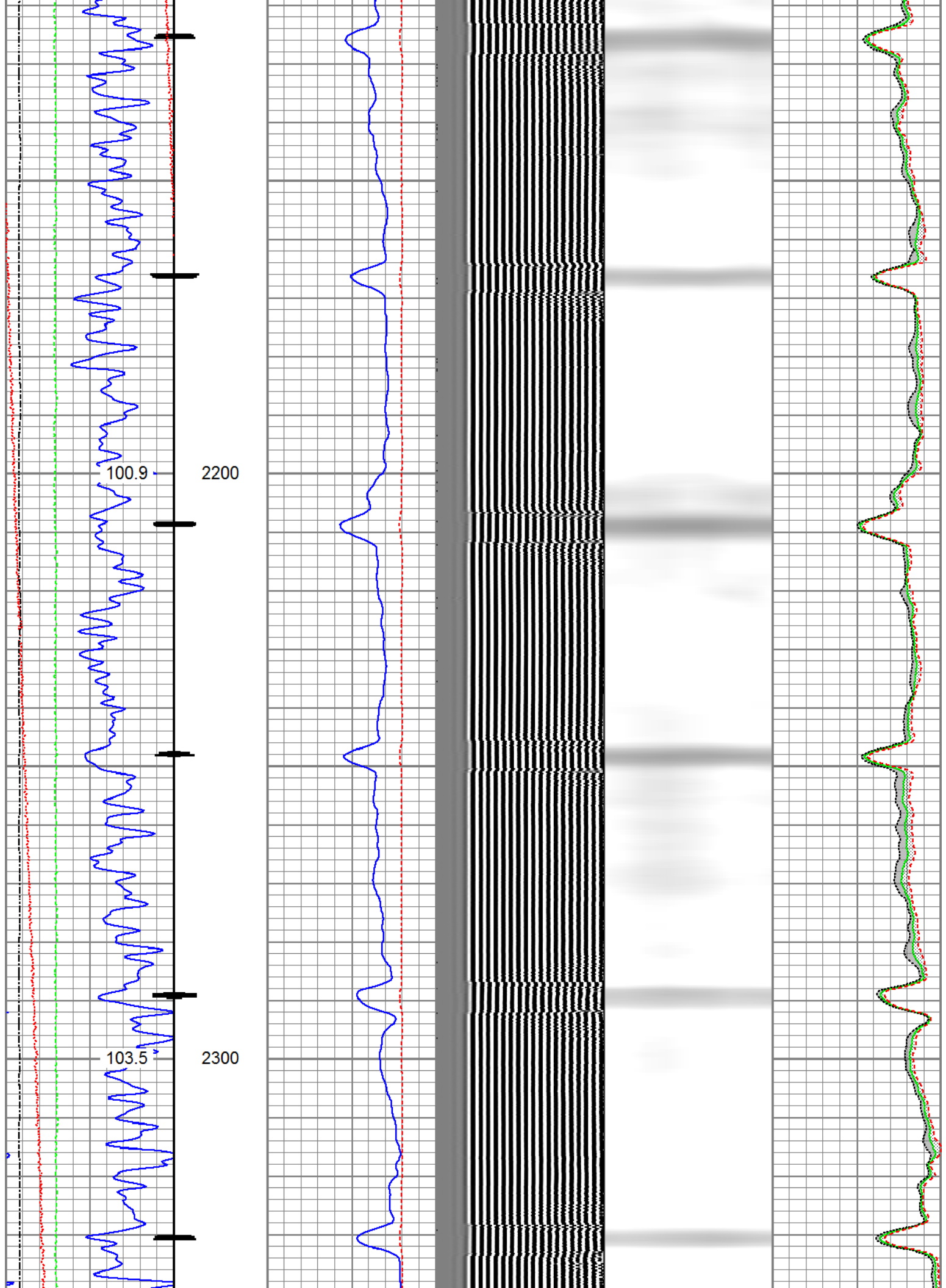


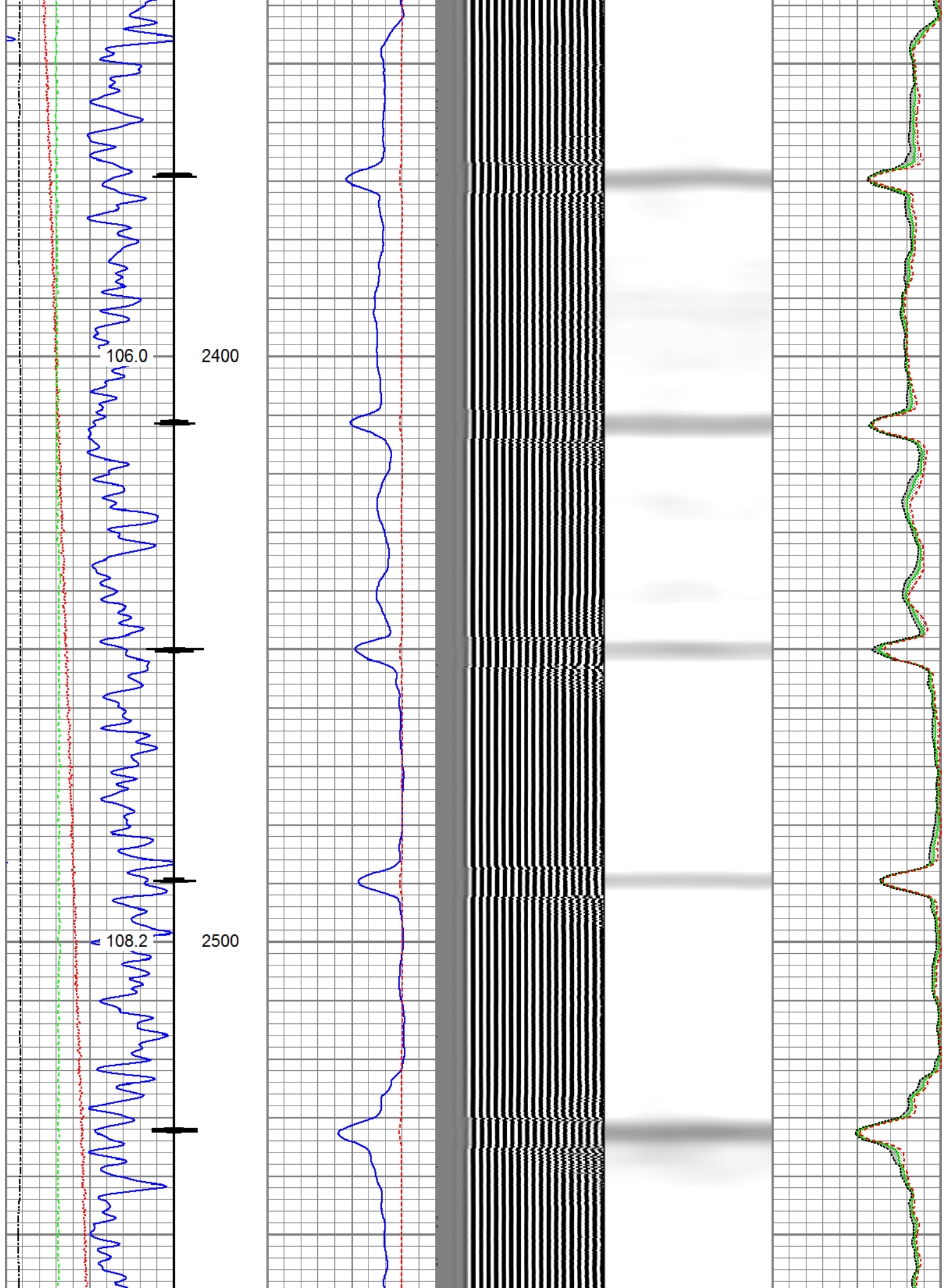


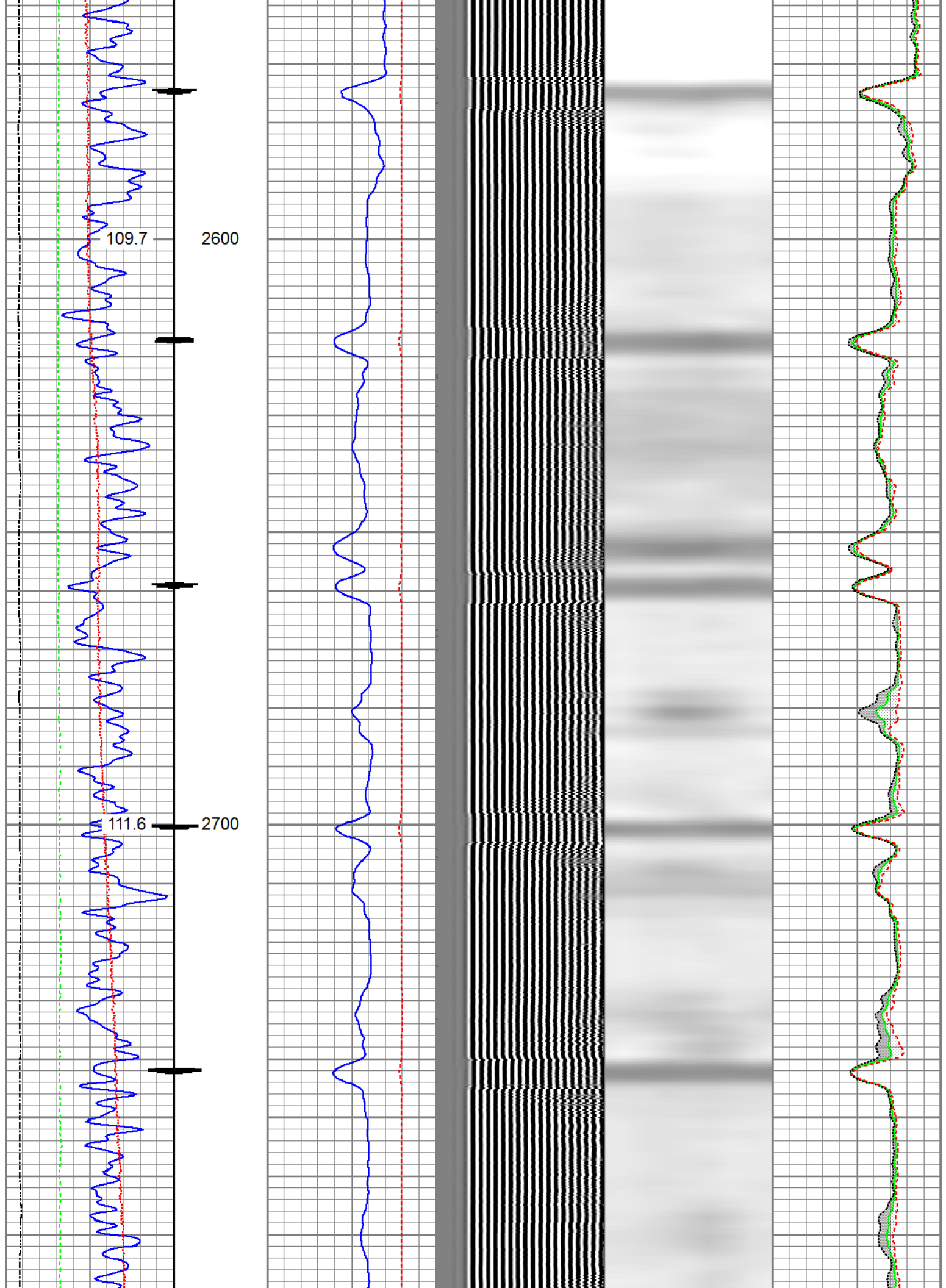


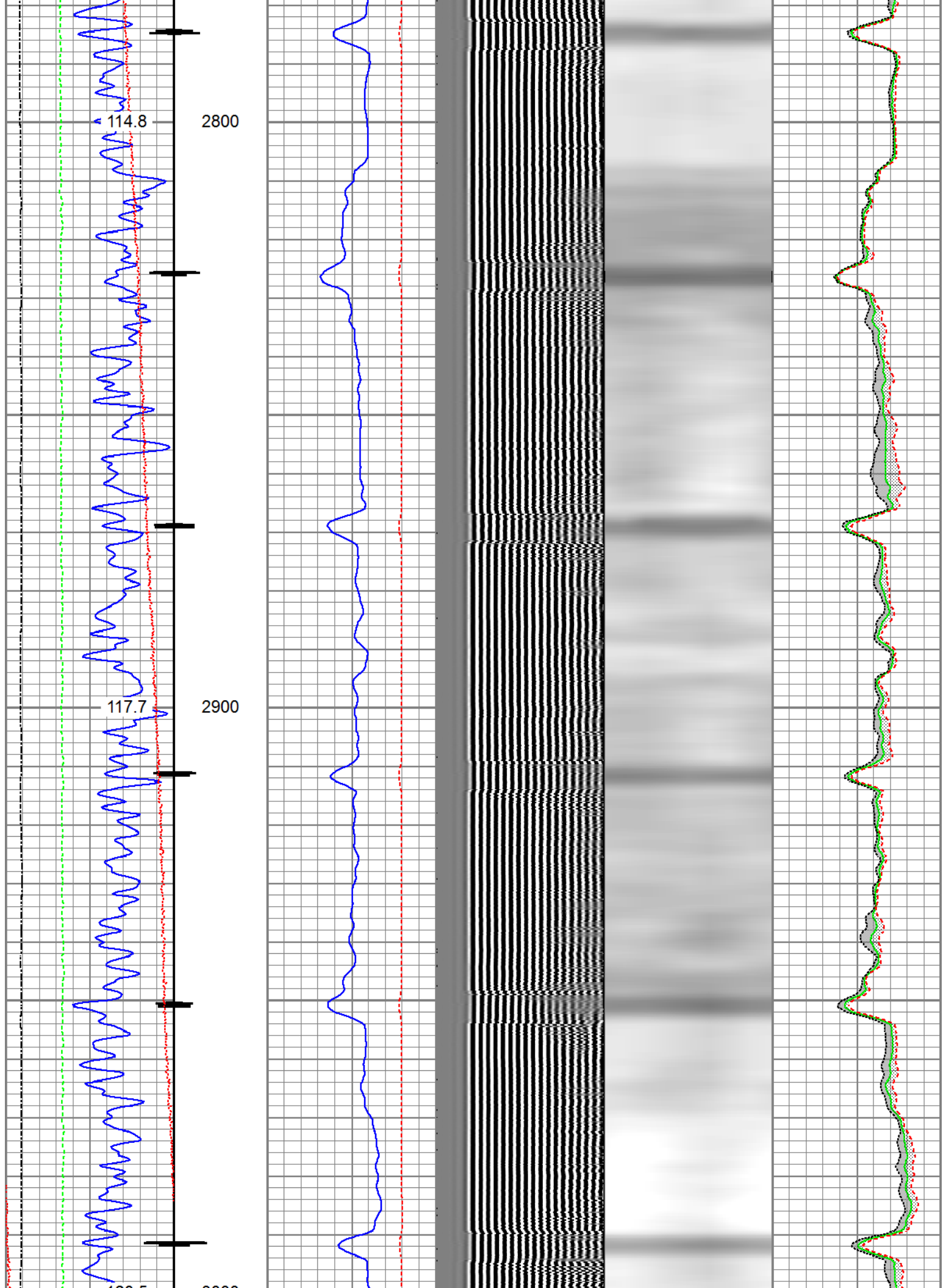


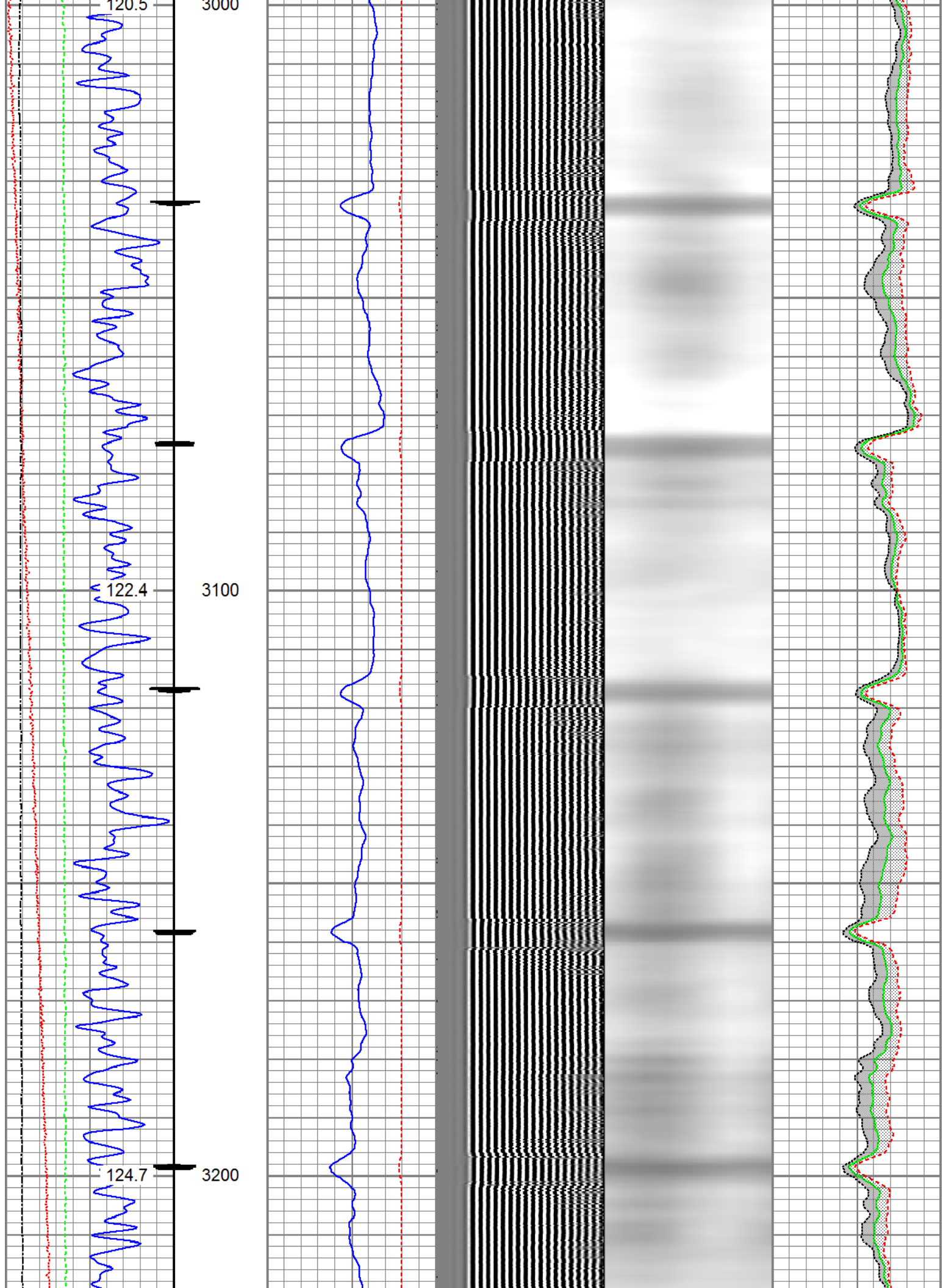


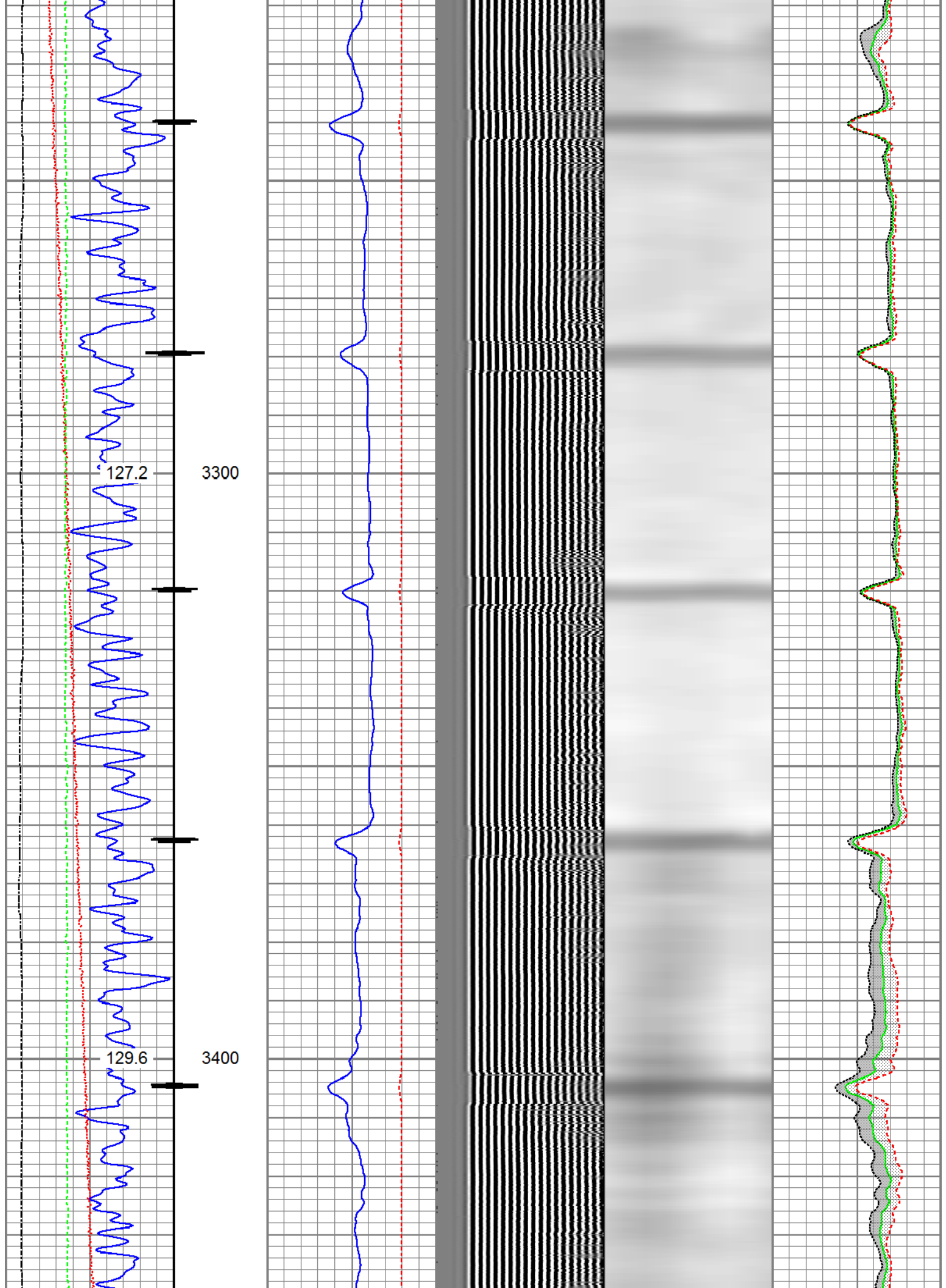


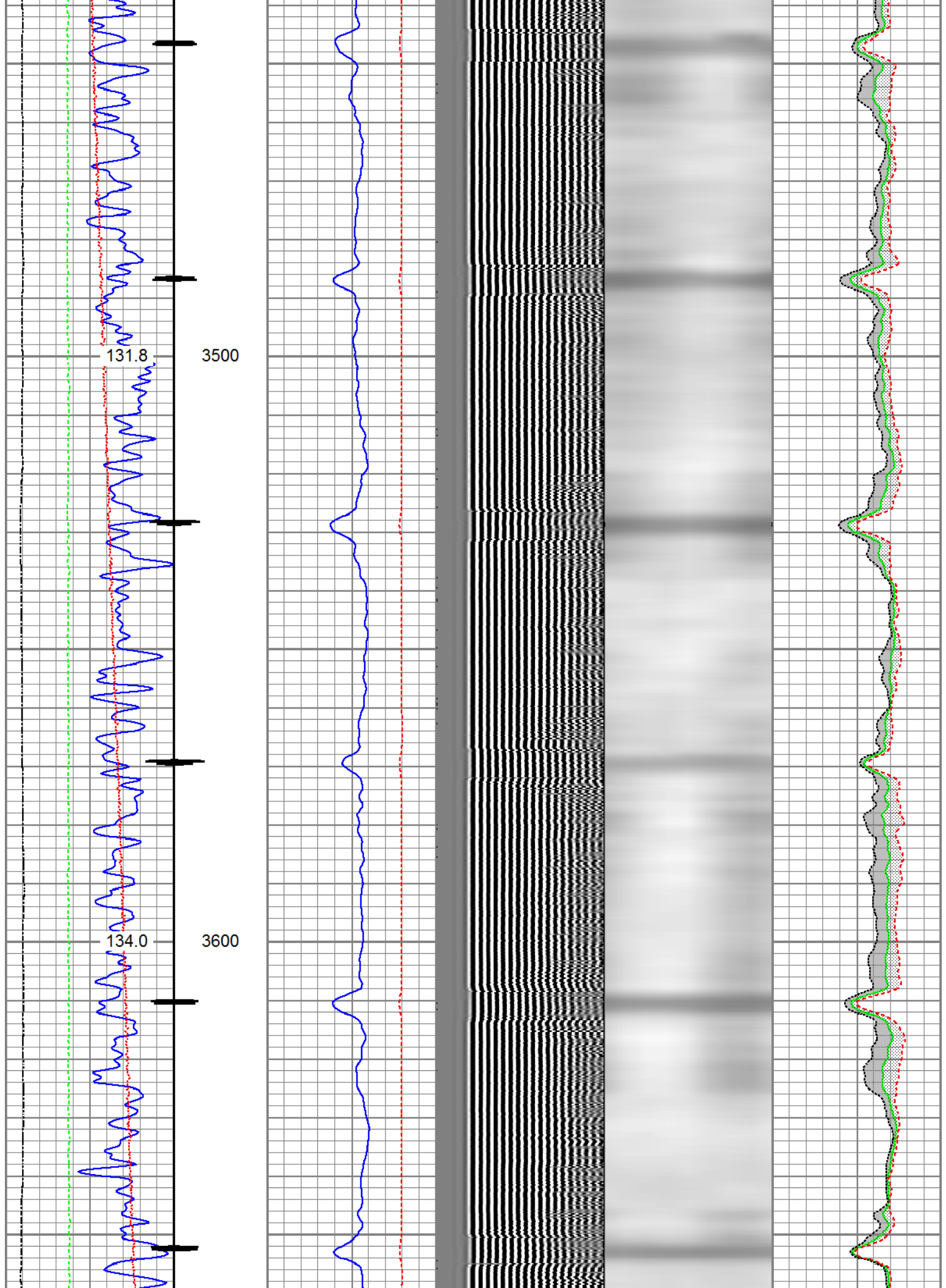


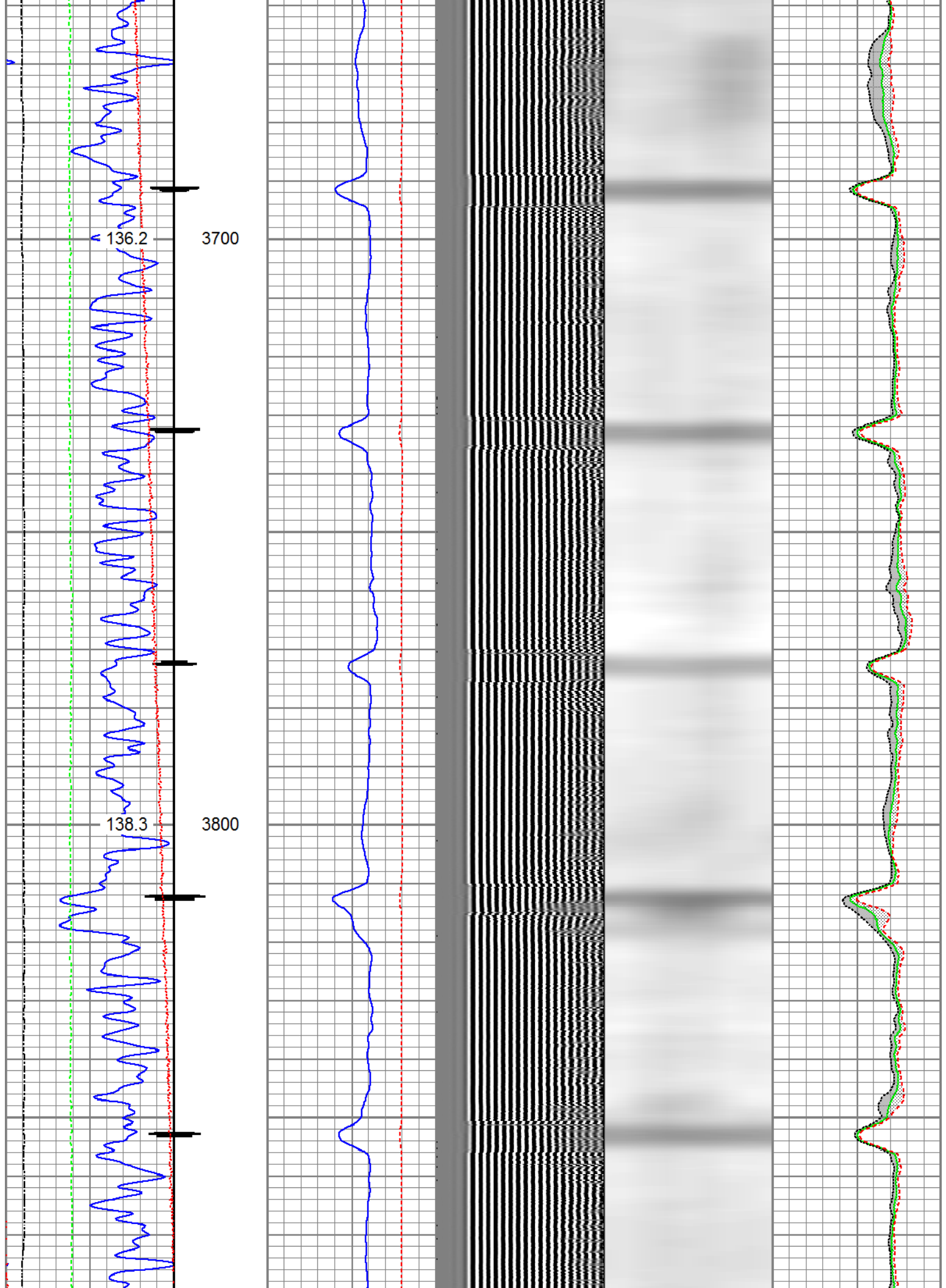


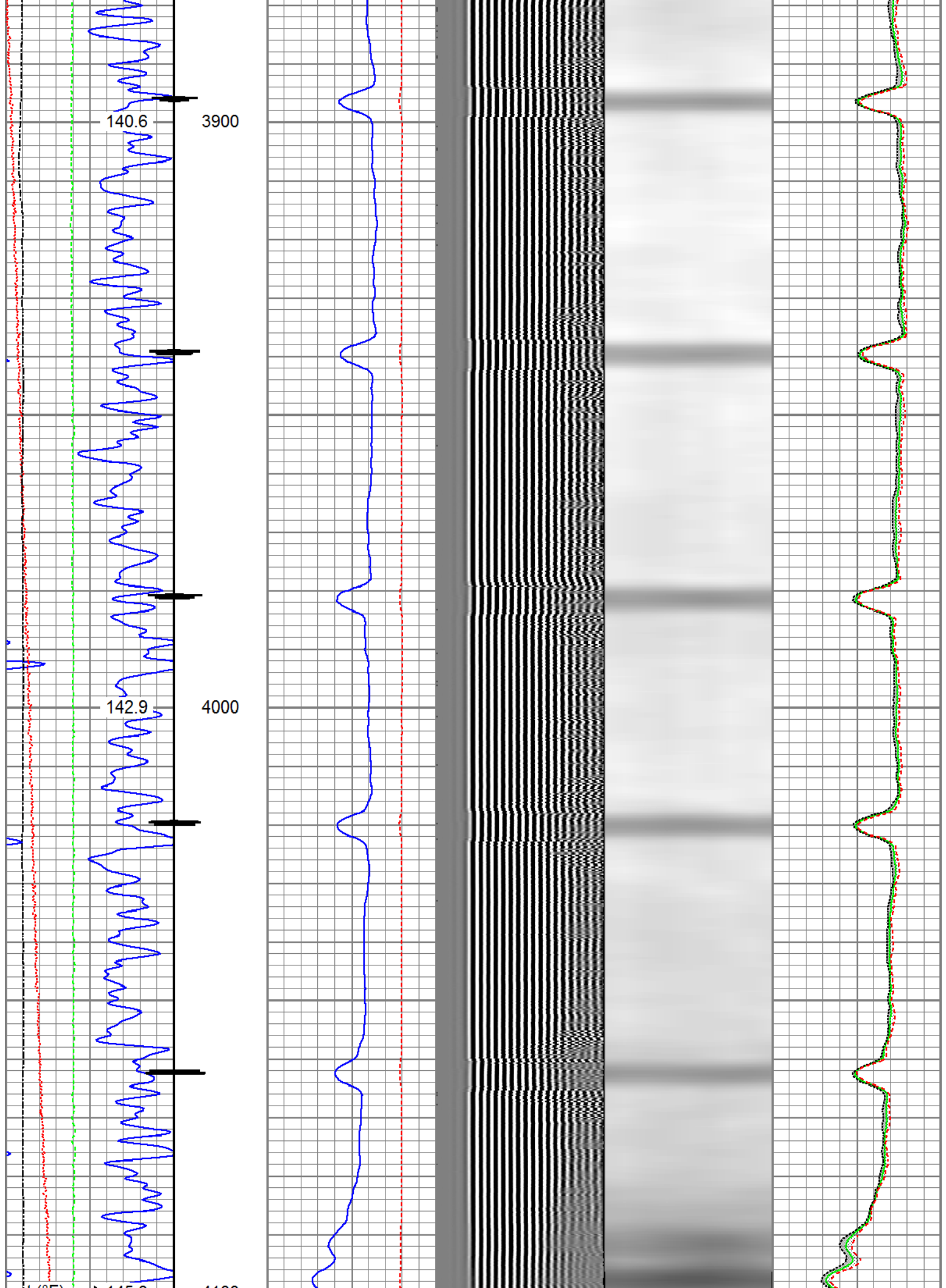


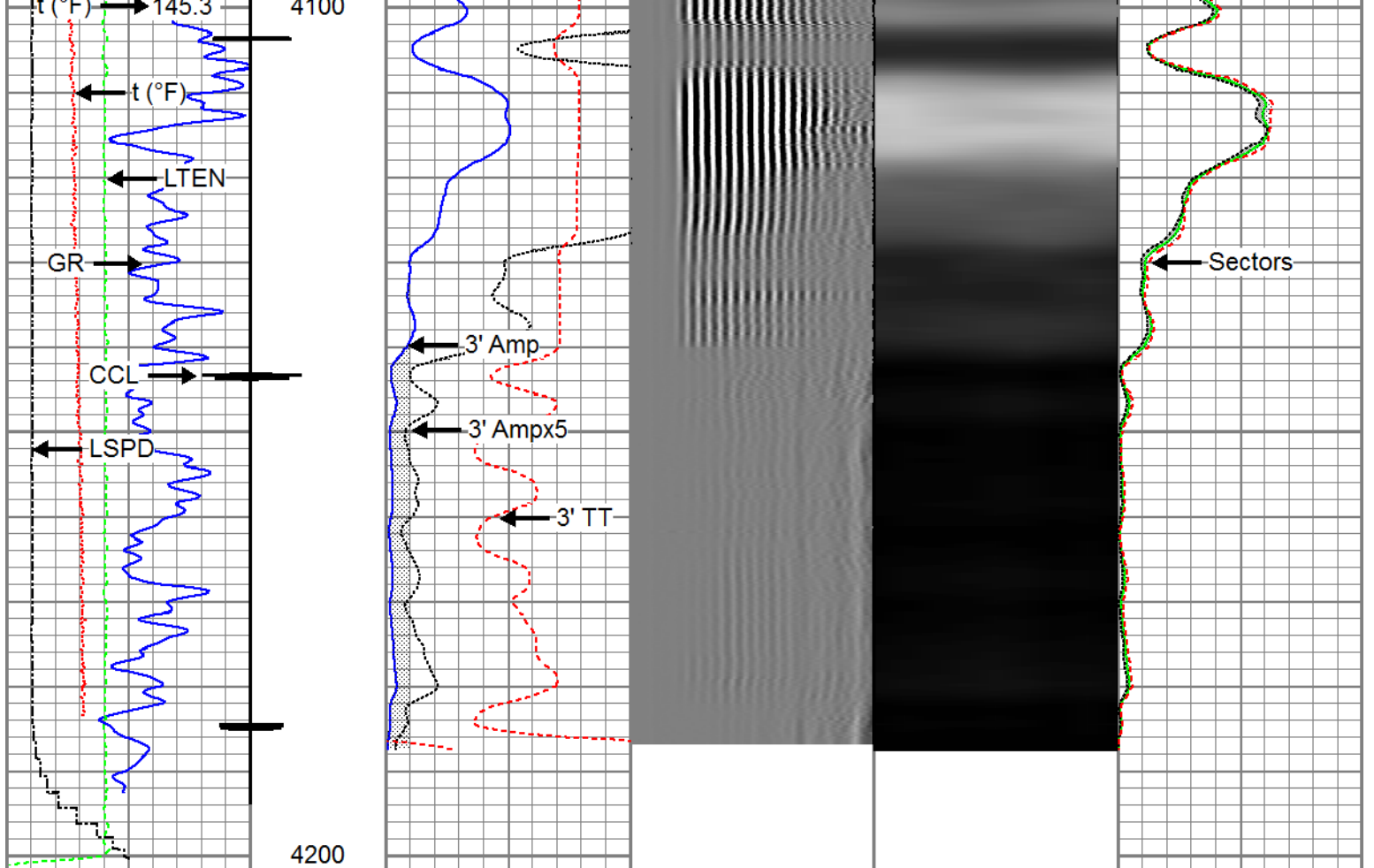













Gamma Ray (GAPI) 0 120	3' Amplitude (mV) 0 100	5' Variable Density Log 200 1200	Sector Map	Average Amplitude 0 100
Casing Collar Locator	3' Amplitude x 5 (mV) 0 20			Minimum Amplitude 0 100
Temperature (degF) 0 20	3' Travel Time (usec) 650 150			Maximum Amplitude 0 100
Line Speed (ft/min) -150 150				
Line Tension (lb) 0 2000				



## Repeat Pass

Recorded with 0 PSI Surface Induced Pressure

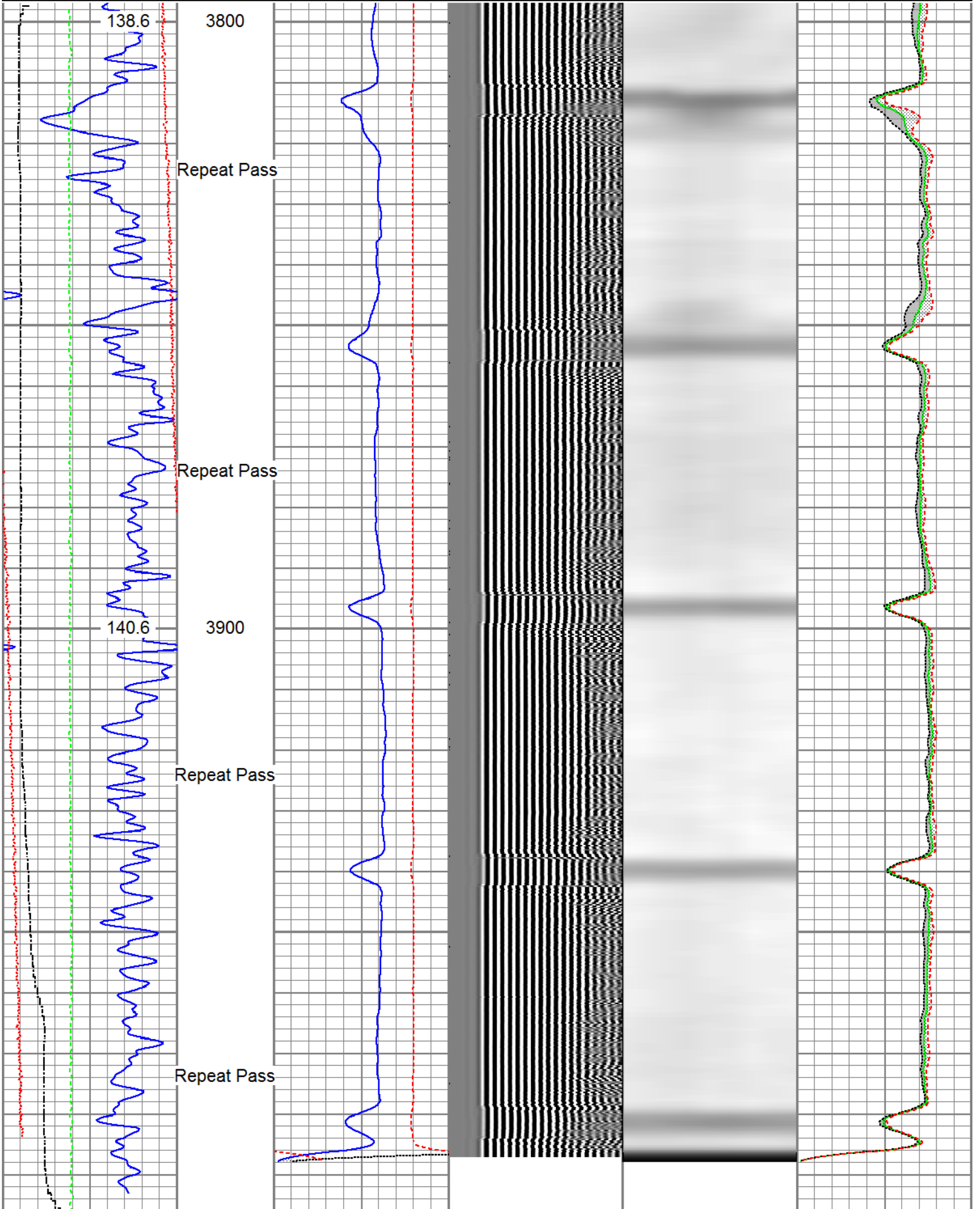
Database File: 0512308002\_anadarko\_donald m vynickier unit 1\_rbl\_08-07-17/processed\_0512308002\_anadarko\_ pass3.2  
 Dataset Pathname: 0512308002\_anadarko\_donald m vynickier unit 1\_rbl\_08-07-17/processed\_0512308002\_anadarko\_ pass3.2  
 Presentation Format: ros\_radrii  
 Dataset Creation: Tue Aug 08 10:20:32 2017  
 Charted by: Depth in Feet scaled 1:240

Gamma Ray (GAPI) 0 120	3' Amplitude (mV) 0 100	5' Variable Density Log 200 1200	Sector Map	Average Amplitude 0 100
Temperature (degF) 0 20	3' Amplitude x 5 (mV) 0 20			Minimum Amplitude 0 100

Line Speed  
-150 (ft/min) 150  
Line Tension  
0 (lb) 2000

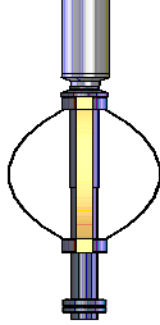
3' Travel Time  
650 (usec) 150

Maximum Amplitude  
0 100



4000		3' Amplitude		5' Variable Density Log		Sector Map		Average Amplitude	
0	(GAPI) 120	0	(mV) 100	200	1200	0		0	100
Temperature		3' Amplitude x 5						Minimum Amplitude	
0	(degF) 20	0	(mV) 20					0	100
Line Speed		3' Travel Time						Maximum Amplitude	
-150	(ft/min) 150	650	(usec) 150					0	100
Line Tension									
0	(lb) 2000								

Sensor	Offset (ft)	Schematic	Description	Length (ft)	O.D. (in)	Weight (lb)	
			Titan_Electric_Cable_Heads-Titan_1-11/16" 1.03 Electric Cable Head with 1" Fishing Neck	1.69	1.69	5.40	
			Probe_ELine_BowSpring_Centralizer-P_EB&2.8875 Probe 2-3/4" Electric Inline Bowspring Centralizer	2.75	2.75	20.00	
Temp	16.72						
WVFS8	14.55			Probe_RADII-C-P_RBT_2750 (FW1305-09&69.19 Probe 2-3/4" Sector Cement Bond Tool with Temperature Probe	2.75	2.75	105.00
WVFS7	14.55						
WVFS6	14.55						
WVFS5	14.55						
WVFS4	14.55						
WVFS3	14.55						
WVFS2	14.55						
WVFS1	14.55						
WVFCAL	14.55						
WV3FT	14.55						
WV5FT	13.55						
HeadVolt	10.30						
			Probe_ELine_BowSpring_Centralizer-P_EB&2.8875 Probe 2-3/4" Electric Inline Bowspring Centralizer	2.75	2.75	20.00	
DCCL	6.51						
CCL	6.51						
GR	5.30		Probe_GR_CCL-P_CGR_2750_S (FW1307&4.54) Probe 2-3/4" Digital CCL / Gamma Ray Combined	2.75	2.75	55.00	



Probe\_ELine\_BowSpring\_Centralizer-P\_EBS2.8875 2.75 20.00  
 Probe 2-3/4" Electric Inline Bowspring Centralizer

Dataset: PROCESSED\_0512308002\_Anadarko\_Donald M Vynickier Unit 1\_RBL\_08-07-17\_W8.db: field/well/run1/pass5.2  
 Total length: 23.40 ft  
 Total weight: 225.40 lb  
 O.D.: 2.75 in

Calibration Report

Database File C:\ProgramData\Warrior\Data\0512308002\_Anadarko\_Donald M Vynickier Unit 1\_RBL\_08-07-17\PR  
 Dataset Pathname pass5.2  
 Dataset Creation Mon Aug 07 10:24:40 2017

Gamma Ray Calibration Report

Serial Number: FW1307-038  
 Tool Model: P\_CGR\_2750\_S  
 Performed: Sat Feb 06 11:43:09 2016

Calibrator Value: 1.0 GAPI

Background Reading: 0.0 cps  
 Calibrator Reading: 1.6 cps

Sensitivity: 0.6061 GAPI/cps

Segmented Cement Bond Log Calibration Report

Serial Number: FW1305-096  
 Tool Model: P\_RBT\_2750

Calibration Casing Diameter: 4.500 in  
 Calibration Depth: 12.517 ft

Master Calibration, performed (Derived):

	Raw (v)		Calibrated (mv)		Results	
	Zero	Cal	Zero	Cal	Gain	Offset
3'	-0.000	0.598	0.800	81.196	134.325	0.843
CAL	0.605	0.605				
5'	-0.007	0.481	0.800	81.196	164.761	1.909
SUM						
S1	0.000	0.585	0.000	100.000	171.067	-0.048
S2	-0.000	0.572	0.000	100.000	174.898	0.019
S3	0.000	0.586	0.000	100.000	170.660	-0.065
S4	0.000	0.604	0.000	100.000	165.659	-0.010
S5	-0.000	0.633	0.000	100.000	158.010	0.011
S6	0.001	0.673	0.000	100.000	148.730	-0.122
S7	0.001	0.667	0.000	100.000	150.233	-0.219
S8	0.001	0.635	0.000	100.000	157.533	-0.093

Internal Reference Calibration, performed (Not Performed):

	Raw (v)		Calibrated (v)		Results	
	Zero	Cal	Zero	Cal	Gain	Offset
CAL	0.000	0.000	0.605	0.605	1.000	0.000

Air Zero Calibration, performed Mon Aug 07 09:12:16 2017:

	Raw (v)		Calibrated (v)		Results	
	Zero		Zero		Offset	
3'	0.004		0.000		-0.000	
5'	0.004		0.000		0.000	
SUM						
S1	-0.001		0.000		0.000	
S2	0.003		0.000		-0.000	
S3	0.003		0.000		0.000	
S4	0.003		0.000		-0.000	
S5	0.003		0.000		-0.000	
S6	0.003		0.000		0.001	
S7	0.002		0.000		0.001	
S8	0.004		0.000		0.000	



Company	Kerr-McGee Oil & Gas Onshore, L.P.
Well	Donald M Vynckier Unit 1
Field	Wattenberg
County	Weld
State	Colorado