

Extraction Oil & Gas  
Project: Larimer County, Co. (NAD 83)  
Site: NE SE SEC. 26 T5N R68W 6th P.M.  
Well: MCGIRR 6C  
Wellbore: Wellbore #1  
Plan: Plan #3 (MCGIRR 6C/Wellbore #1)  
Patterson 346

Start 2366.20 hold at 1592.99 MD  
First MWD Survey



WELL DETAILS: MCGIRR 6C

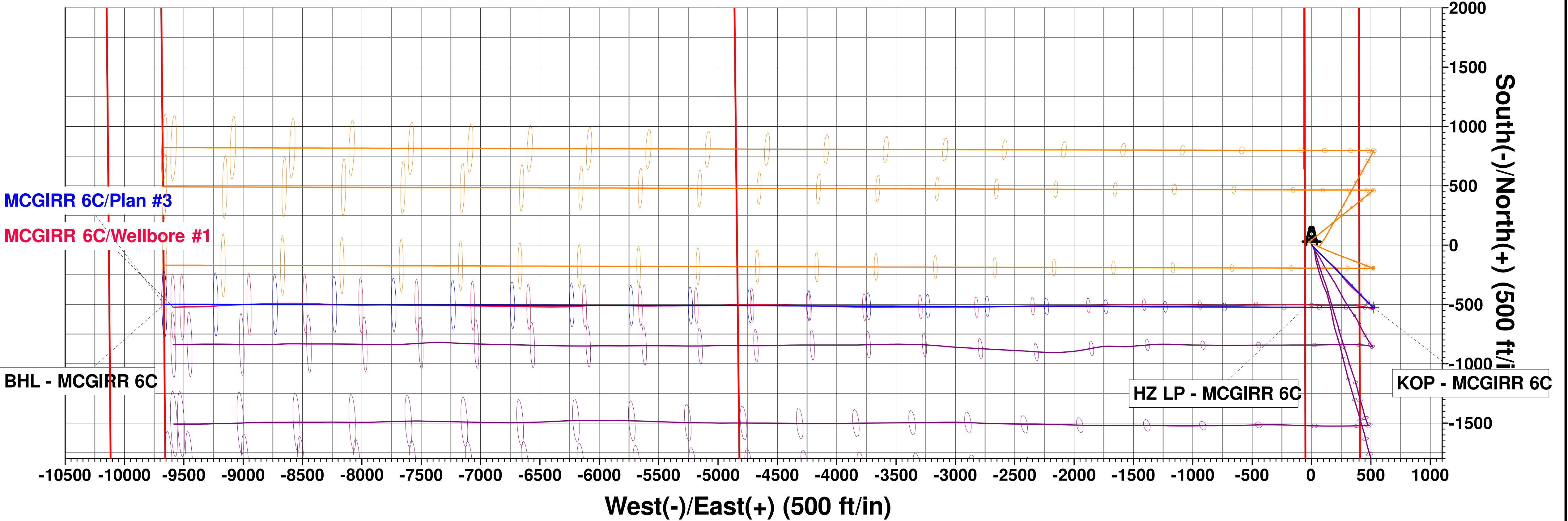
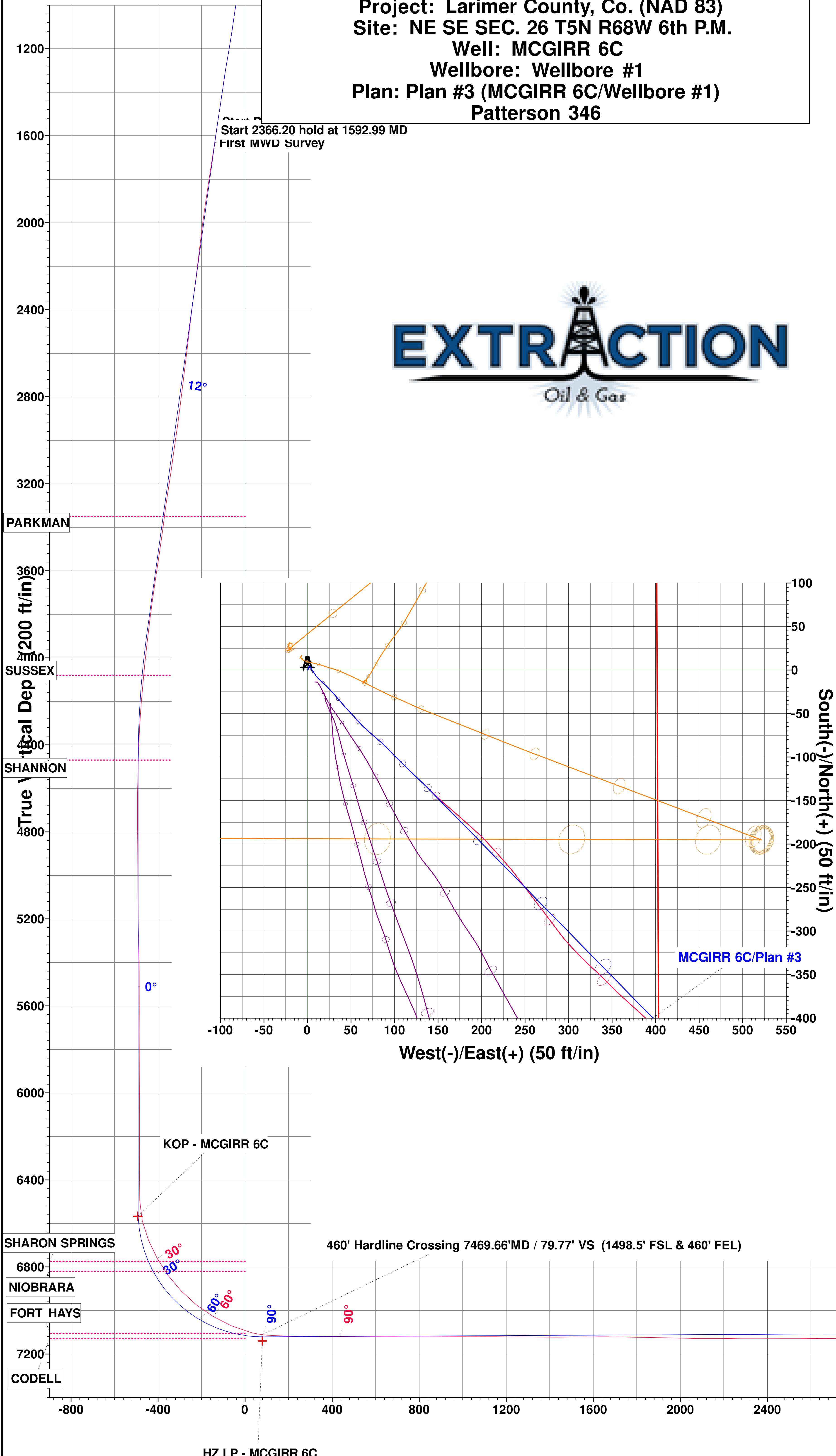
Ground Elevation:: 4945.00  
RKB Elevation: KB=16 @ 4961.00ft (Patterson 346)  
Rig Name: Patterson 346

Northing 1377767.4000 Easting 3148746.4600 Latitude 40.3691439 Longitude -104.9661610



Planned Section Details

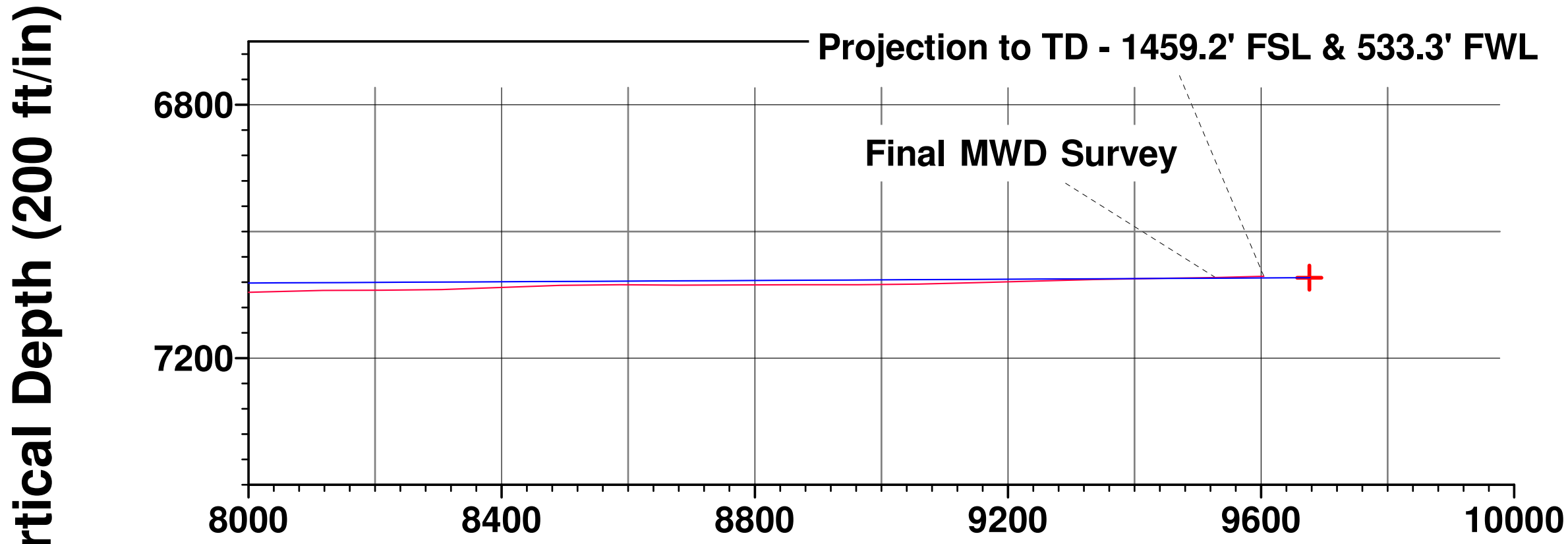
Sec	MD	Inc	Azi	TVD	+N/-S	+E/-W	Dleg	TFace	VSect
1	1554.00	12.39	133.15	1535.39	-129.83	132.39	0.00	0.00	-125.53
2	1592.99	11.81	135.62	1573.52	-135.54	138.24	2.00	139.55	-131.07
3	3959.19	11.81	135.62	3889.65	-481.61	476.85	0.00	0.00	-451.40
4	4549.55	0.00	0.00	4475.84	-524.94	519.24	2.00	-180.00	-491.51
5	6621.76	0.00	0.00	6548.05	-524.94	519.24	0.00	0.00	-491.51
6	7524.62	90.29	270.15	7121.00	-523.45	-56.58	10.00	270.15	83.47
7	17131.60	90.29	270.15	7073.00	-498.60	-9663.40	0.00	0.00	9676.25



PROJECT DETAILS: Larimer County, Co. (NAD 83)  
Geodetic System: US State Plane 1983  
Datum: North American Datum 1983  
Ellipsoid: GRS 1980  
Zone: Colorado Northern Zone  
System Datum: Mean Sea Level  
Local North: Grid

Diagram showing True North (T), Grid North (G), and Magnetic North (M) with associated azimuth and magnetic field data.

Azimuths to Grid North  
True North: -0.34°  
Magnetic North: 8.25°  
Magnetic Field Strength: 52343.0snT  
Dip Angle: 66.75°  
Date: 6/8/2017  
Model: HDGM



Vertical Section at 267.05° (200 ft/in)

Vertical Section at 267.05° (200 ft/in)