



Kerr-McGee Oil & Gas Onshore LP

A subsidiary of Anadarko Petroleum Corporation

1099 18th Street
Denver, CO 80202
720-929-6000

September 8, 2017

Matt Lepore
Director, Colorado Oil and Gas Conservation Commission
Department of Natural Resources
The Chancery Building
1120 Lincoln Street, Suite 801
Denver, CO 80203

Re: **30 Day Certification Letter - 318A.e**
AZUL 13-11HZ (Doc No. 401336920)
Township 1 North, Range 66 West
Section 13: SESW
Unit Acreage: 360 Acres
Unit Spacing: 01N66W SEC 13: SESW
01N66W SEC 24: W2
Weld County, Colorado

Dear Director Lepore:

Kerr-McGee Oil and Gas Onshore LP ("KMG") hereby certifies that a thirty (30) day notice was sent to 18 mineral owners by certified mail. We have not received any objections to such well location, proposed spacing unit, or additional producing formation from the delivered 15 Notices. The undeliverable notices have a combined working interest of 0.00134050%. KMG hereby respectfully requests approval of this well.

If you have any questions or issues regarding this permit, please contact me at (720) 929-3094.

Sincerely,

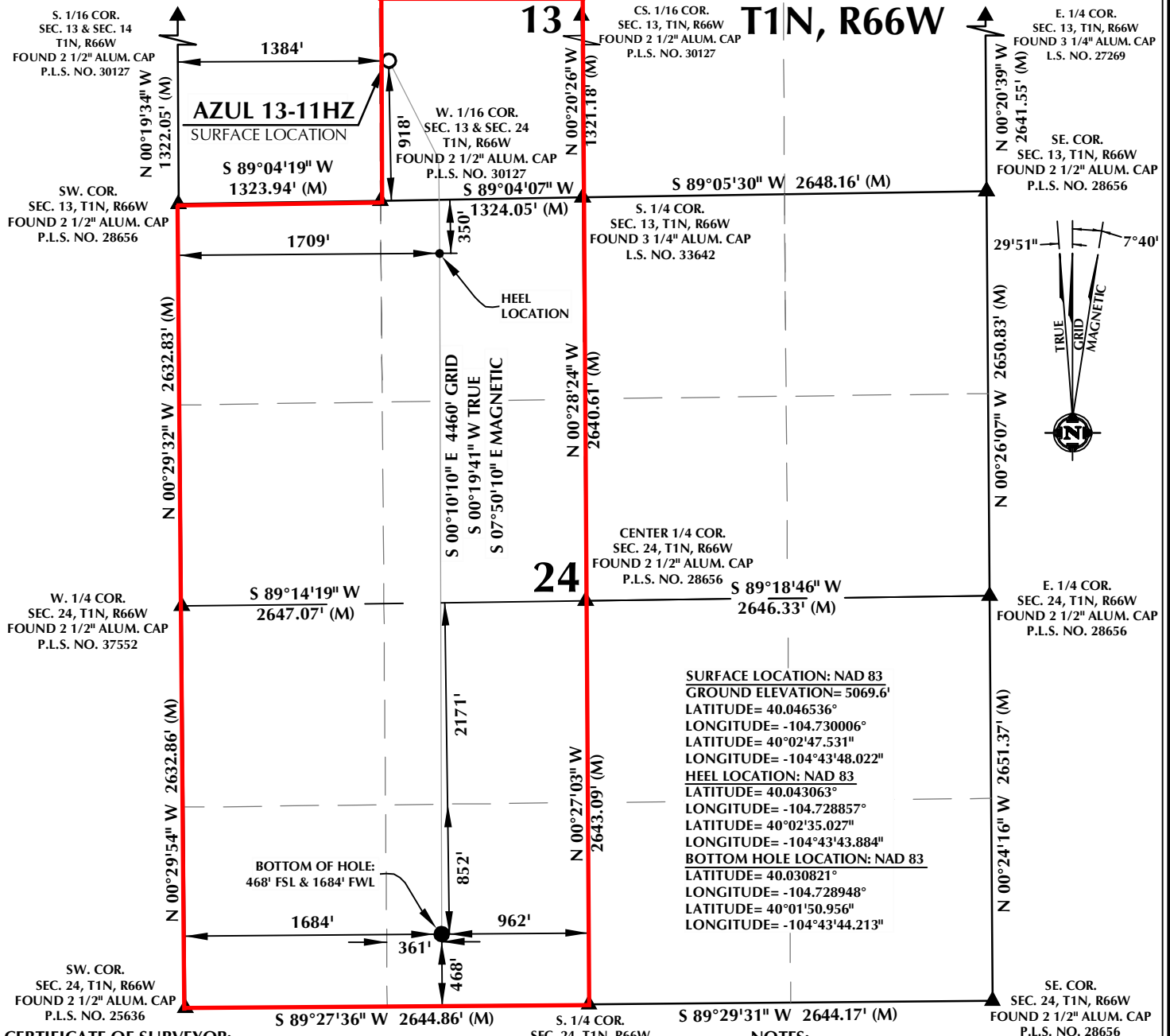
Kerr-McGee Oil and Gas Onshore LP

A handwritten signature in black ink, appearing to read 'John Piekara', written over a light blue rectangular background.

John Piekara
Sr. Regulatory Analyst

Enclosure

PROPOSED SPACING UNIT



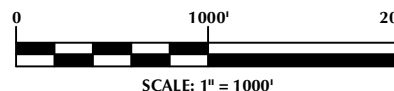
CERTIFICATE OF SURVEYOR:

THIS IS TO CERTIFY THAT THE ABOVE PLAT WAS PREPARED FROM FIELD NOTES OF ACTUAL SURVEYS MADE BY ME OR UNDER MY SUPERVISION AND THAT THE SAME ARE TRUE AND CORRECT TO THE BEST OF MY KNOWLEDGE AND BELIEF. THIS CERTIFICATE DOES NOT REPRESENT A LAND SURVEY PLAT OR IMPROVEMENT SURVEY PLAT AS DEFINED BY C.R.S. 38-5-102 AND CANNOT BE RELIED UPON TO DETERMINE OWNERSHIP.

Randall K. French
 RANDALL K. FRENCH
 PROFESSIONAL LAND SURVEYOR
 COLORADO REGISTRATION NUMBER 38512
 6/23/17

NOTICE:
 ACCORDING TO COLORADO STATE LAW YOU MUST TAKE LEGAL ACTION BASED UPON ANY DEFECT IN THIS SURVEY WITHIN THREE YEARS AFTER YOU FIRST DISCOVER SUCH DEFECT. IN NO EVENT MAY ANY ACTION BASED UPON ANY DEFECT IN THIS SURVEY BE COMMENCED MORE THAN TEN YEARS FROM THE DATE ON THE CERTIFICATION SHOWN HEREON.

NOTE:
 MAGNETIC NORTH IS CURRENT AS OF 5/11/2017.
 MAGNETIC NORTH CHANGES WEST 0°06' PER YEAR.



NOTES:

- ▲ INDICATES SECTION CORNER
- INDICATES CALCULATED CORNER
- ELEVATION BASED ON NAVD88 (GEOID12B)
- BASIS OF BEARING DERIVED FROM COLORADO COORDINATE SYSTEM OF 1983 NORTH ZONE.
- ALL MEASURED DISTANCES ARE GRID.
- COMBINED SCALE FACTOR: .99972250 CALCULATED FROM THE W. 1/4 CORNER OF SECTION 13, T1N, R66W
- OPERATOR: PRESTON KNUSTEN / PDOP = 1.5
- SEE ADDENDUM TO WELL LOCATION CERTIFICATE FOR EXISTING IMPROVEMENTS WITHIN 500' OF THE WELL PAD.
- WELL FOOTAGES ARE MEASURED AT RIGHT ANGLES TO THE SECTION LINES.
- THE BOTTOM OF HOLE BEARS S00°10'10"E, 4460' FROM THE HEEL LOCATION.

WELL PAD - AZUL 13-6HZ

AZUL 13-11HZ
WELL LOCATION CERTIFICATE
 918' FSL & 1384' FWL SESW (SURFACE)
 LOCATED IN SECTION 13
 350' FNL & 1709' FWL NENW (HEEL)
 468' FSL & 1684' FWL SESW (BOTTOM)
 LOCATED IN SECTION 24
 T1N, R66W, 6TH P.M.
 WELD COUNTY, COLORADO

**Kerr-McGee Oil &
 Gas Onshore L.P.**
 1099 18th Street
 Denver, Colorado 80202



CONSULTING, LLC

SHERIDAN OFFICE
 1095 Saberton Avenue
 Sheridan, Wyoming 82801
 Phone 307-674-0609

LOVELAND OFFICE
 1635 Foxtrail Drive, Suite 204
 Loveland, Colorado 80538
 Phone 970-776-4331

DRAFTED BY:	LMO	CHECKED BY:	RKF
DATE DRAFTED:	6/23/17	DATE SURVEYED:	5/11/17
REVISED:		FILE NAME:	16-194