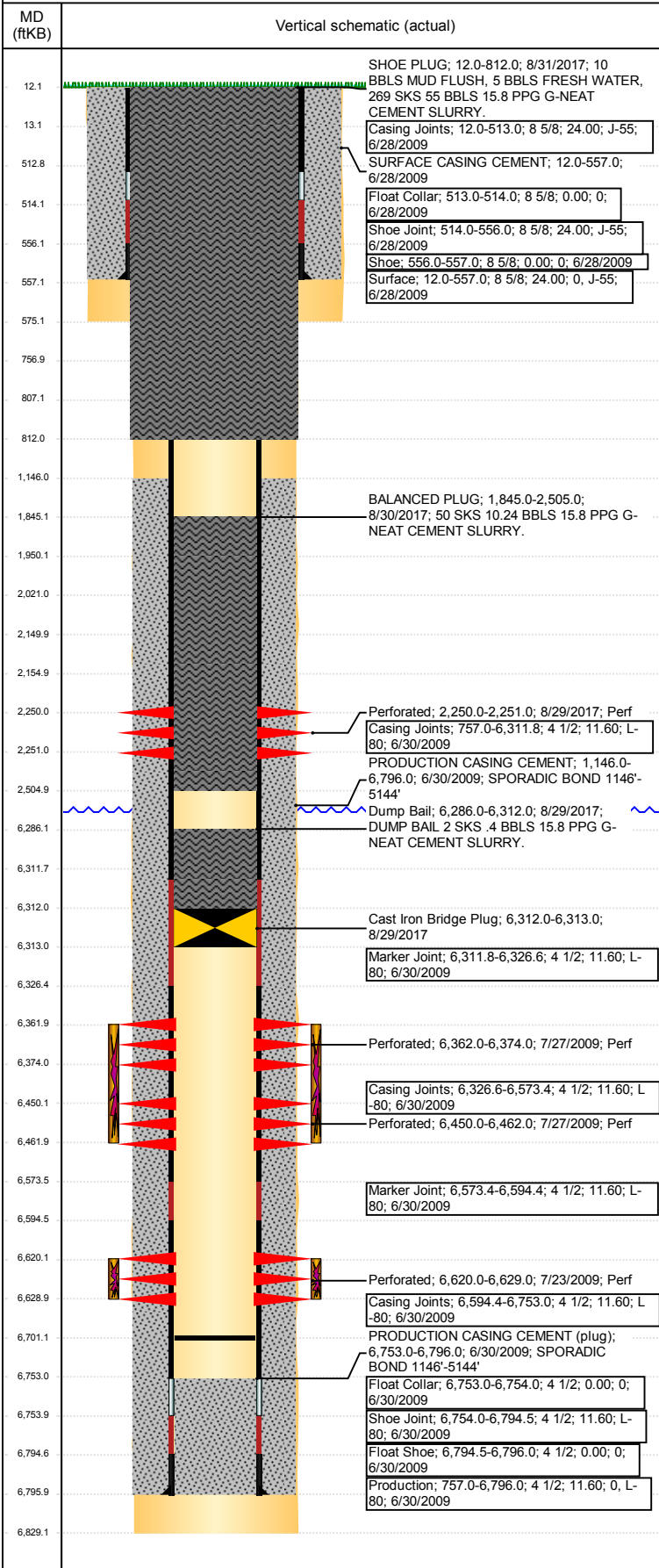


**Well Name: WELLS RANCH USX BB11-01**

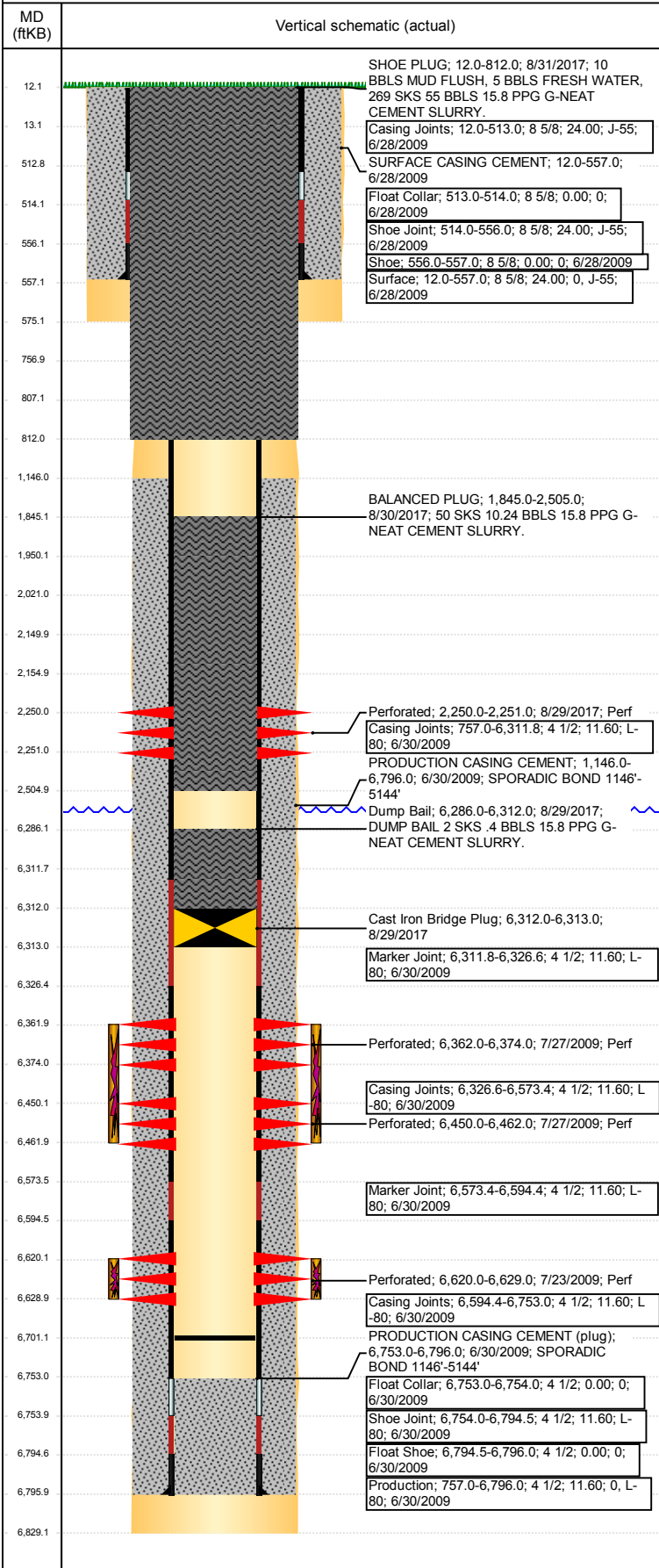
VERTICAL - ORIGINAL HOLE, 9/20/2017 1:39:52 PM



Well Header							
API	05-123-30476	Business Unit	DJ BASIN	District	15	Well Config	VERTICAL
Original KB Elevation (ft)	4,697	KB - GL / MSL (ftKB)	12.00	Spud Date	6/28/2009	P & A Date	8/31/2017
Comment							
Directions To Well							
Wells Ranch USX BB11-01; WCR 67 & 68, E .2, S 2.75 TO COW CAMP, E .1, S 1.0 THROUGH SEC. 3 , E 0.5, S 0.4, E 0.3 , NE INTO LOCATION.							
Congressional Location							
Quarter 3	Quarter 4	Section	Township	TwNShp N/S Dir	Range	Range E/W Dir	
NE	NE	11	5	N	63	W	
Bottom Hole Location							
North-South Distance (ft)		From N or S Line		East-West Distance (ft)		From E or W Line	
Plug Back Total Depths							
Date	Depth (ftKB)	Method	Com				
6/30/2009	6,753.0	CASING TALLY	TOP OF FLOAT COLLAR				
7/10/2009	6,753.0	CASED HOLE LOG	DEPTH LOGGER ON CBL				
9/15/2009	6,701.0	TUBING TALLY	DRILL CIFTF W/ CUTRITE BIT AND N2. CHASE P...				
Wellbore Sections							
Section Des		Size (in)	Act Top, MD (ftKB)	Act Btm, MD (ftKB)			
SURFACE		12 1/4	12	575			
PRODUCTION		7 7/8	575	6,829			
Zone Statuses							
Zone Name	Status Date	Status	Fluid Type	Job	Prod Method		
CODELL	7/29/2009	PR		DRILLING/CO...			
CODELL	8/29/2017	P&A		ABANDON WE...			
NIOBRARA	7/29/2009	PR		DRILLING/CO...			
NIOBRARA	8/29/2017	P&A		ABANDON WE...			
Casing Strings							
Surface, 557.0ftKB							
Casing Description	Run Date	OD (in)	Wt/Len (L...)	Grade	Top, MD (ft...)	MD (ftKB)	
Surface	6/28/2009	8 5/8	24.00	J-55	12.0	557.0	
Production, 6,796.0ftKB							
Casing Description	Run Date	OD (in)	Wt/Len (L...)	Grade	Top, MD (ft...)	MD (ftKB)	
Production	6/30/2009	4 1/2	11.60	L-80	12.2	6,796.0	
Cement							
Description	Top Depth (ftKB)	Bottom Depth (ftKB)					
SURFACE CASING CEMENT	12.0	557.0					
Description	Top Depth (ftKB)	Bottom Depth (ftKB)					
PRODUCTION CASING CEMENT	1,146.0	6,796.0					
Description	Top Depth (ftKB)	Bottom Depth (ftKB)					
Dump Bail	6,286.0	6,312.0					
Description	Top Depth (ftKB)	Bottom Depth (ftKB)					
Balance Plug	757.0	807.0					
Description	Top Depth (ftKB)	Bottom Depth (ftKB)					
Shoe Plug	12.0	757.0					
Description	Top Depth (ftKB)	Bottom Depth (ftKB)					
Cement Squeeze	2,155.0	2,250.0					
Description	Top Depth (ftKB)	Bottom Depth (ftKB)					
Cement Squeeze	2,021.0	2,150.0					
Description	Top Depth (ftKB)	Bottom Depth (ftKB)					
Remedial Casing Cement	1,950.0	2,250.0					
Description	Top Depth (ftKB)	Bottom Depth (ftKB)					
Dump Bail	6,286.0	6,312.0					
Description	Top Depth (ftKB)	Bottom Depth (ftKB)					
BALANCED PLUG	1,845.0	2,505.0					
Description	Top Depth (ftKB)	Bottom Depth (ftKB)					
SHOE PLUG	12.0	812.0					
Tubing Strings							
Tubing Description	Run Date	String ...	ID (in)	Wt (lb/ft)	Grade	Len (ft) Set De...	
Tubing - Production	9/15/2009	2 3/8	2.00	4.70	J-55	6,594.54	
Other In Hole							
Run Date	Des		OD (in)	Top (ftKB)	Btm (ftKB)		
6/6/2017	Cement Retainer		3.99	2,150.0	2,155.0		
8/29/2017	Cast Iron Bridge Plug		3.99	6,312.0	6,313.0		

**Well Name: WELLS RANCH USX BB11-01**

VERTICAL - ORIGINAL HOLE, 9/20/2017 1:39:53 PM



Logs			
Date	Type	Top, MD (ftKB)	Btm, MD (ftKB)
6/30/2009	Caliper/Comp. Density/Neutron/GR/SP/ML	2,590.0	6,826.0
6/30/2009	DIL/GR/SP/Caliper	555.0	6,826.0
7/10/2009	CBL/CCL/GR	700.0	6,746.0
6/30/2015	GYRO	12.0	6,500.0

Perforation Data					
Linked Zone	Bnch/St g	Sum of Entered Shot Total	Top (ftKB)	Btm (ftKB)	Date
		0	2,250.00	2,250.00	6/6/2017
		6	2,250.00	2,251.00	8/29/2017
NIOBARRA, ORIGINAL HOLE	A	24	6,362.00	6,374.00	7/27/2009
NIOBARRA, ORIGINAL HOLE	B	24	6,450.00	6,462.00	7/27/2009
CODELL, ORIGINAL HOLE		36	6,620.00	6,629.00	7/23/2009
<b>Total (Sum)</b>		<b>90</b>			

**Stimulation Intervals**

Start Date	Primary Job Type
7/27/2009	DRILLING/COMPLETION - ORIGINAL

Technical Result	Tech Result Details	Tech Result Note
Success	According to Plan	

Comment  
(CODELL): REVERSE STEP RATE RESULTS. PO 14 NWB 225 PSI WB 180 PSI PPF 166 PSI FOR A TOTAL OF 571 PSI OF FRICTION. HAD SHUT DOWN 340 BBLS INTO PAD . HAD ISSUES WITH THE DRY GEL. ADDED 100 BBLS TO THE PAD STAGE. WE WERE SHUT DOWN FOR 38 MINUTES. TREATMENT WENT WELL. AVG VISC 28.7 CPS AVG TEMP 79.1F AVG PH 10.19. POST JOB 5 MINUTE OF 3094 PSI.

Start Date	Primary Job Type
7/27/2009	DRILLING/COMPLETION - ORIGINAL

Technical Result	Tech Result Details	Tech Result Note

Comment  
(NIOBARRA): TREATMENT WENT WELL. INCREASED RATE TO 60 BPM, DUE TO LOW TREATING PRESSURE. AVG VISC 24.7 CPS AVG TEMP 80.7F AVG PH 10.2. POST JOB 5 MINUTE OF 3061 PSI.