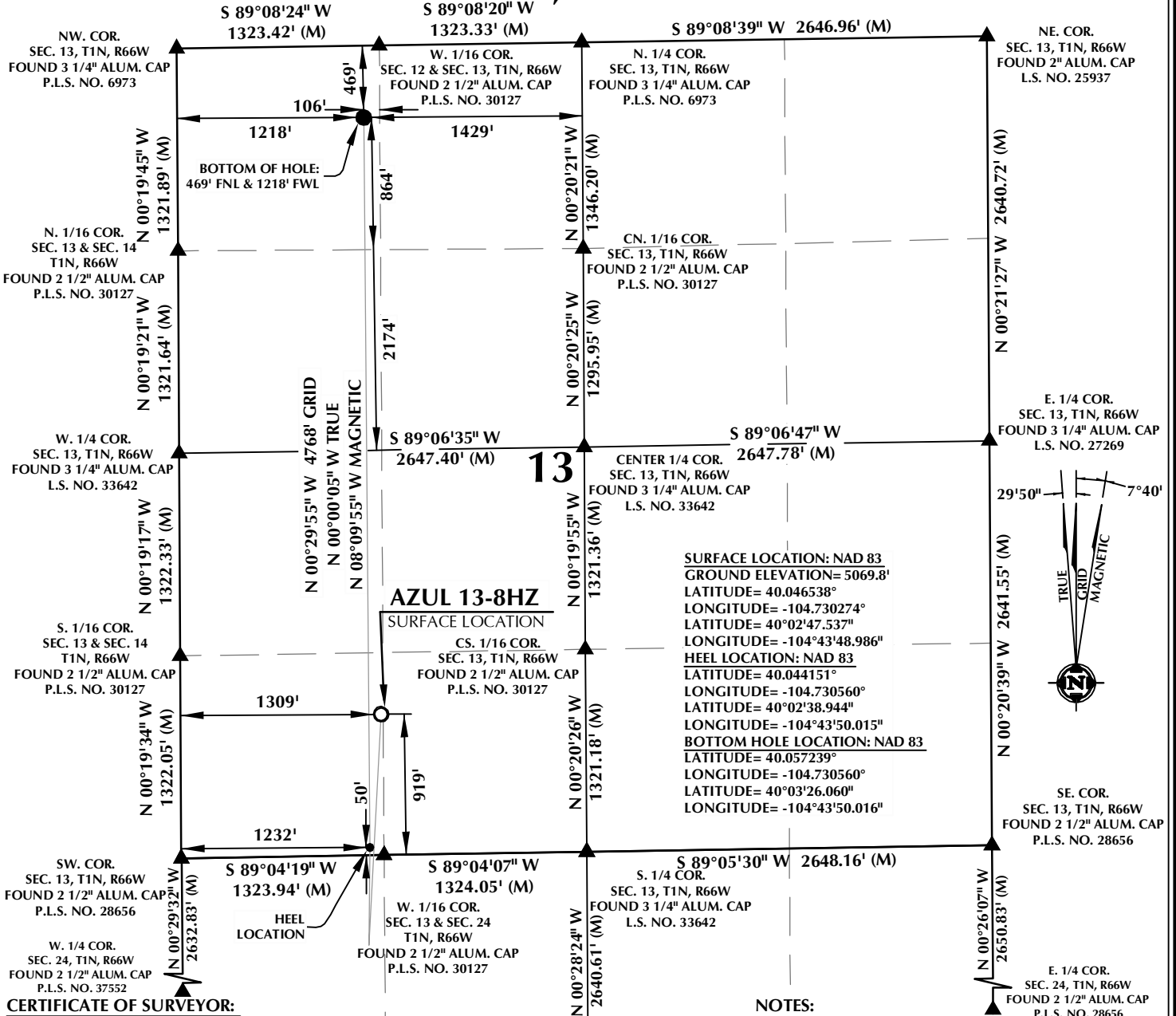


T1N, R66W



6/23/17

38512

6/23/17

38512

WELL PAD - AZUL 13-6HZ

AZUL 13-8HZ

WELL LOCATION CERTIFICATE

919' FSL & 1309' FWL SWSW (SURFACE)

50' FSL & 1232' FWL SWSW (HEEL)

469' FNL & 1218' FWL NWNW (BOTTOM)

LOCATED IN SECTION 13

T1N, R66W, 6TH P.M.

WELD COUNTY, COLORADO

NOTE:

MAGNETIC NORTH IS CURRENT AS OF 5/11/2017.

MAGNETIC NORTH CHANGES WEST 0°06' PER YEAR.

SCALE: 1" = 1000'

NOTES:

- ▲ INDICATES SECTION CORNER
- INDICATES CALCULATED CORNER
- ELEVATION BASED ON NAVD88 (GEOID12B)
- BASIS OF BEARING DERIVED FROM COLORADO COORDINATE SYSTEM OF 1983 NORTH ZONE.
- ALL MEASURED DISTANCES ARE GRID.
- COMBINED SCALE FACTOR: .99972250 CALCULATED FROM THE W. 1/4 CORNER OF SECTION 13, T1N, R66W
- OPERATOR: PRESTON KNUSTEN / PDOP = 1.6
- SEE ADDENDUM TO WELL LOCATION CERTIFICATE FOR EXISTING IMPROVEMENTS WITHIN 500' OF THE WELL PAD.
- WELL FOOTAGES ARE MEASURED AT RIGHT ANGLES TO THE SECTION LINES.
- THE BOTTOM OF HOLE BEARS N00°29'55"W, 4768' FROM THE HEEL LOCATION.

Kerr-McGee Oil & Gas Onshore L.P.

1099 18th Street

Denver, Colorado 80202

CONSULTING, LLC

SHERIDAN OFFICE

1095 Saberton Avenue

Sheridan, Wyoming 82801

Phone 307-674-0609

LOVELAND OFFICE

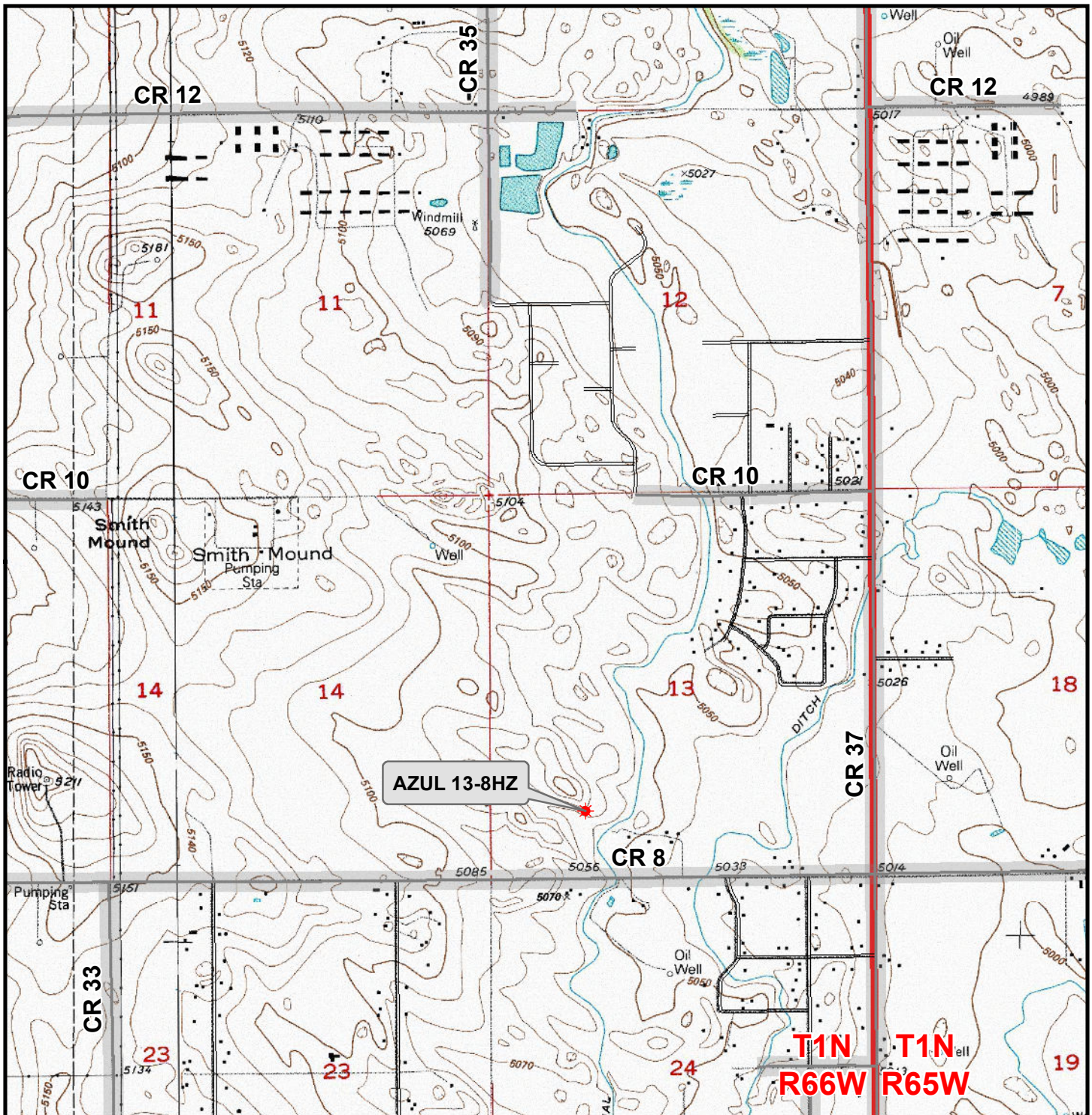
1635 Foxtrail Drive, Suite 204

Loveland, Colorado 80538

Phone 970-776-4331

DRAFTED BY:	LMO	CHECKED BY:	RKF
DATE DRAFTED:	6/23/17	DATE SURVEYED:	5/11/17
REVISED:		FILE NAME:	16-194

K:\ANADARKO\2016\2016_194_AZUL_T1N_R66W_SEC_13\GIS\Maps_ABC\Azul 13-6HZ\Azul 13-8HZ.mxd 6/23/2017 10:17:19 AM



Legend

- ★ Well - Fee - Proposed === Road - Primitive - Existing — Road - County - Existing
— Road - Improved - Existing — Road - Highway - Existing

WELL PAD - AZUL 13-6HZ
GENERAL LOCATION MAP
AZUL 13-8HZ
LOCATED IN SECTION 13
T1N, R66W, 6th P.M.
WELD COUNTY, COLORADO

**Kerr-McGee Oil &
Gas Onshore L.P.**

1099 18th Street
Denver, Colorado 80202



CONSULTING, LLC

SHERIDAN OFFICE
1095 Saberton Avenue
Sheridan, Wyoming 82801
Phone 307-674-0609

LOVELAND OFFICE
1635 Foxtail Drive, Suite 204
Loveland, Colorado 80538
Phone 970-776-4331



SCALE: 1" = 2,000ft

NAD83 CO-Nft

DRAWN: SP

DATE: 23 Jun 2017

REVISED:

DATE: