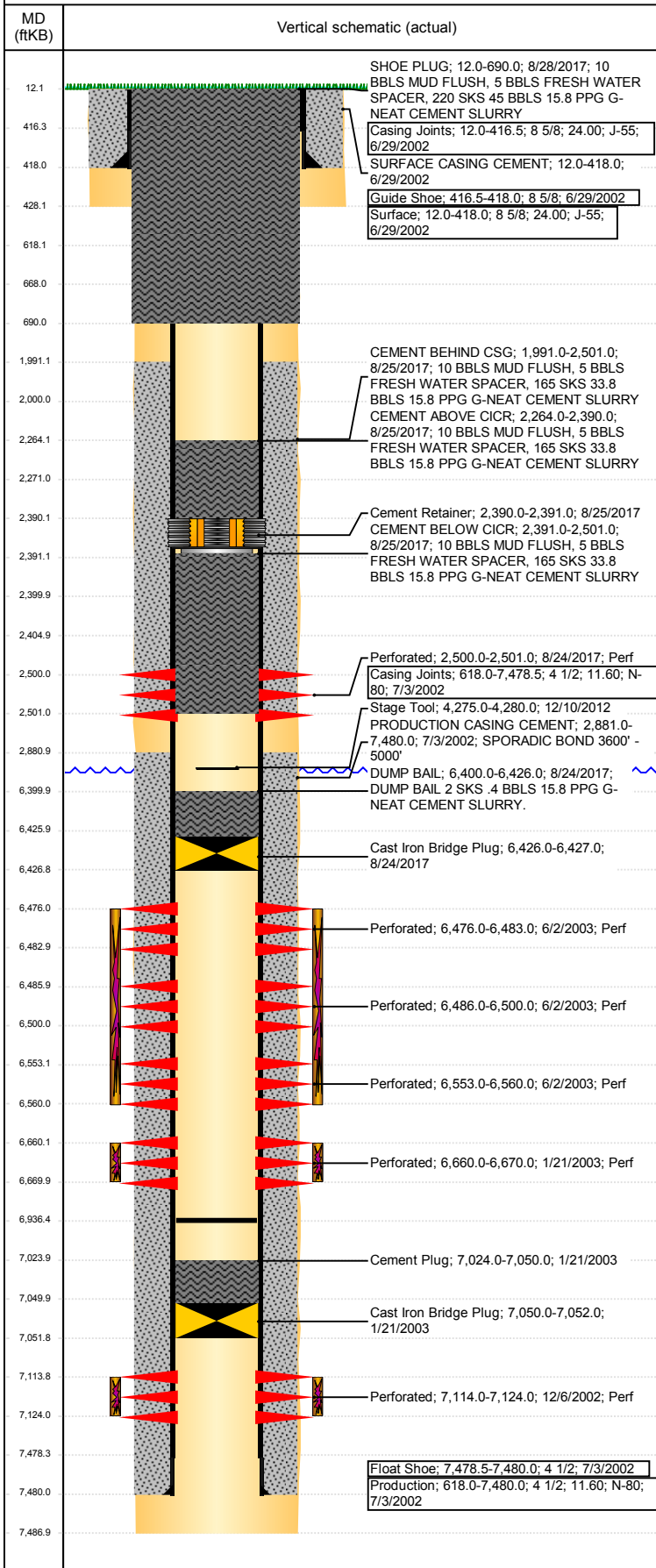


**Well Name: WELLS 22-15**

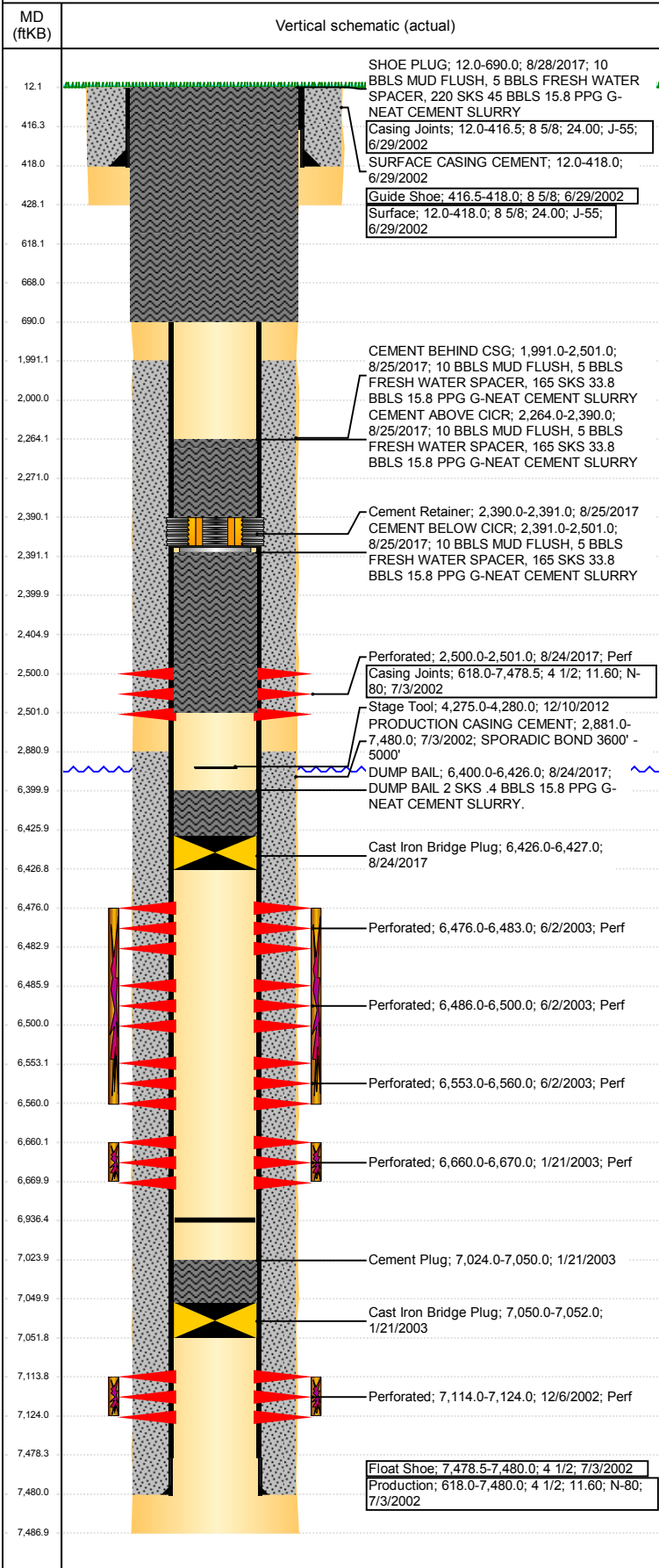
VERTICAL - ORIGINAL HOLE, 9/20/2017 1:37:58 PM



Well Header						
API	05-123-20889	Business Unit	DJ BASIN			
District	15	Well Config	VERTICAL			
Original KB Elevation (ft)	4,662	KB - GL / MSL (ftKB)	12.00			
Spud Date	6/28/2002	P & A Date	8/28/2017			
Comment						
Directions To Well						
67 & 68 E 1/4, S 2.8 TO COW CAMP, SW 1/2, S 1 MILE, SE 3/10, SW/S THROUGH BATTERY OVER CATTLE GUARD 1.2, E 1/10, N INTO.						
Congressional Location						
Quarter 3	Quarter 4	Section	Township			
SE	NW	15	5			
Twonshp N/S Dir	Range	Range E/W Dir				
N	63	W				
Bottom Hole Location						
North-South Distance (ft)	From N or S Line	East-West Distance (ft)	From E or W Line			
Plug Back Total Depths						
Date	Depth (ftKB)	Method	Com			
7/17/2002	7,448.0	CASED HOLE LOG	DEPTH LOGGER			
1/23/2003	7,024.0	TAG	2 SKS CEMENT ON TOP OF CIBP AT 7050'			
8/7/2006	6,750.0	TAG	CLEANED OUT TO 6750			
5/8/2012	6,936.5	TAG	TUBING TALLY			
Wellbore Sections						
Section Des	Size (in)	Act Top, MD (ftKB)	Act Btm, MD (ftKB)			
SURFACE	12 1/4	12	428			
PRODUCTION	7 7/8	428	7,487			
Zone Statuses						
Zone Name	Status Date	Status	Fluid Type	Job	Prod Method	
J SAND	1/21/2003	SI		DRILLING/CO...		
J SAND	8/24/2017	P&A		PLUG AND AB...		
NIOBRARA	8/14/2003	PR	Water	DRILLING/CO...	Flowing	
NIOBRARA	6/3/2009	PR				
NIOBRARA	8/24/2017	P&A		PLUG AND AB...		
CODELL	8/14/2003	PR	Water	DRILLING/CO...	Flowing	
CODELL	10/27/2006	PR				
CODELL	6/3/2009	PR		RE-FRAC, 8/4/...		
CODELL	4/8/2015	PR				
CODELL	8/24/2017	P&A		PLUG AND AB...		
Casing Strings						
Surface, 418.0ftKB						
Casing Description	Run Date	OD (in)	W/Len (L...)	Grade	Top, MD (ft...)	MD (ftKB)
Surface	6/29/2002	8 5/8	24.00	J-55	12.0	418.0
Production, 7,480.0ftKB						
Casing Description	Run Date	OD (in)	W/Len (L...)	Grade	Top, MD (ft...)	MD (ftKB)
Production	7/3/2002	4 1/2	11.60	N-80	12.0	7,480.0
Cement						
Description	Top Depth (ftKB)	Bottom Depth (ftKB)				
SURFACE CASING CEMENT	12.0	418.0				
PRODUCTION CASING CEMENT	2,881.0	7,480.0				
Cement Plug	7,024.0	7,050.0				
Dump Bail	6,400.0	6,426.0				
Balance Plug	618.0	668.0				
Shoe Plug	12.0	618.0				
Cement Squeeze	2,405.0	2,500.0				
Cement Squeeze	2,271.0	2,400.0				
Remedial Casing Cement	2,000.0	2,500.0				
DUMP BAIL	6,400.0	6,426.0				
CEMENT ABOVE CICR	2,264.0	2,390.0				
CEMENT BELOW CICR	2,391.0	2,501.0				
CEMENT BEHIND CSG	1,991.0	2,501.0				

**Well Name: WELLS 22-15**

VERTICAL - ORIGINAL HOLE, 9/20/2017 1:37:59 PM



Cement			
Description	SHOE PLUG	Top Depth (ftKB)	Bottom Depth (ftKB)
		12.0	690.0

Tubing Strings							
Tubing Description	Run Date	String...	ID (in)	Wt (lb/ft)	Grade	Len (ft)	Set De...
Tubing	9/13/2006	2 3/8	2.00	4.70	J-55	6,634.00	
Tubing - Production	5/8/2012	2 3/8	2.00	4.70	J-55	6,632.86	

Other In Hole				
Run Date	Des	OD (in)	Top (ftKB)	Btm (ftKB)
1/21/2003	Cast Iron Bridge Plug	3.99	7,050.0	7,052.0
8/24/2017	Cast Iron Bridge Plug	3.99	6,426.0	6,427.0
8/25/2017	Cement Retainer	3.99	2,390.0	2,391.0

Logs			
Date	Type	Top, MD (ftKB)	Btm, MD (ftKB)
7/3/2002	COMPENSATED DENSITY	428.0	7,487.0
7/17/2002	CBL/CCL/GR	2,760.0	7,444.0
4/12/2011	GYRO	10.0	6,620.0

Perforation Data					
Linked Zone	Bnch/St g	Sum of Entered Shot Total	Top (ftKB)	Btm (ftKB)	Date
		0	2,500.00	2,500.00	6/6/2017
		6	2,500.00	2,501.00	8/24/2017
NIORBARA, ORIGINAL HOLE	B	14	6,476.00	6,483.00	6/2/2003
NIORBARA, ORIGINAL HOLE	B	28	6,486.00	6,500.00	6/2/2003
NIORBARA, ORIGINAL HOLE	C	14	6,553.00	6,560.00	6/2/2003
CODELL, ORIGINAL HOLE		40	6,660.00	6,670.00	1/21/2003
J SAND, ORIGINAL HOLE		40	7,114.00	7,124.00	12/6/2002
<b>Total (Sum)</b>		<b>142</b>			

Stimulation Intervals		
Start Date	Primary Job Type	
12/30/2002	DRILLING/COMPLETION - ORIGINAL	
Technical Result	Tech Result Details	Tech Result Note
Comment		
Start Date	Primary Job Type	
9/7/2006	RE-FRAC	
Technical Result	Tech Result Details	Tech Result Note
Comment		
Start Date	Primary Job Type	
1/23/2003	DRILLING/COMPLETION - ORIGINAL	
Technical Result	Tech Result Details	Tech Result Note
Comment		
Start Date	Primary Job Type	
6/4/2003	DRILLING/COMPLETION - ORIGINAL	
Technical Result	Tech Result Details	Tech Result Note
Comment		